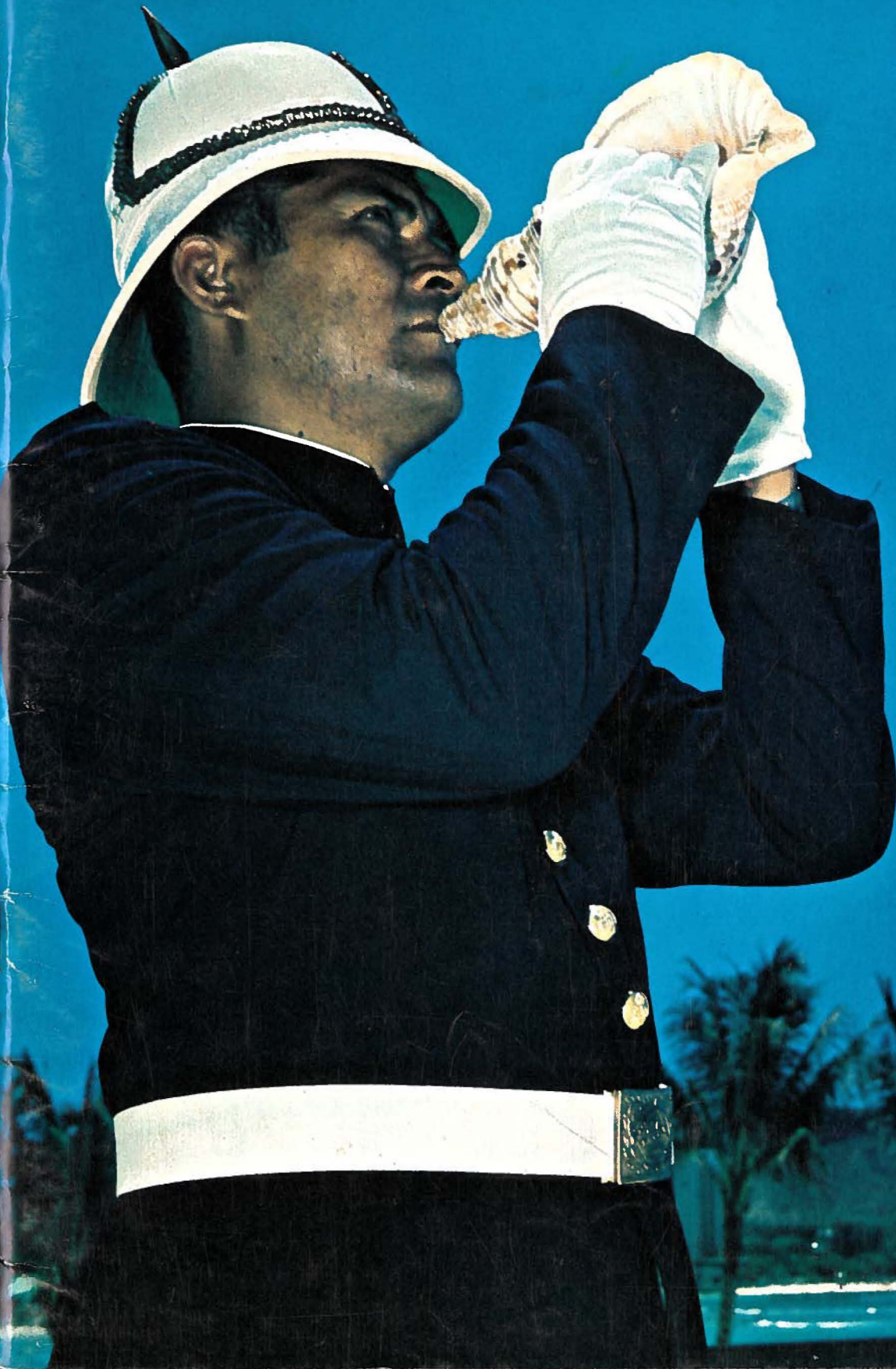


The Hawaii

GUARDSMAN



FALL 1971

WATUMULL'S

THE ILIKAI • 2236 KALAKAUA AVE.
HAWAIIAN VILLAGE HOTEL
ALA MOANA SHOPPING CENTER
RODEWAY INN
HOLIDAY INN
PRINCESS KAIULANI HOTEL
WAIKIKI SHOPS OPEN DAILY 9-9

WE WILL PACK & MAIL
FOR YOU

SUNDAY 10-4
ALL MAJOR
CREDIT CARDS ACCEPTED

ISLAND FASHIONS AT THEIR BEST

Shop for your authentic Island fashions at Watumull's, the oldest and largest chain of Hawaiian apparel stores in the Islands.

Smart, colorful garments, made in Hawaii for the entire family, in a selection unsurpassed.

Also, see our large variety of exotic imports from the Far East, Island curios and souvenirs.



FAMILY GROUP PRINTS

The Leilani group of stores, carrying a wide selection of Hawaiian apparel of all types, specializes in family groups.

Outfit the whole family in a variety of smart new styles, all in the same colorful, authentic Hawaiian print.

Many other fashions and prints available — all at surprisingly low prices.

Visit any one of our shops and check our wide assortment.

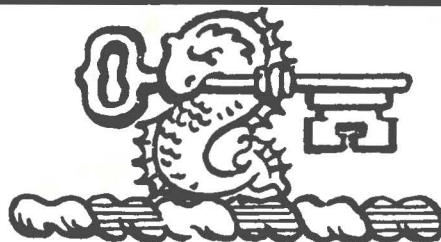
WAIKIKI SHOPS OPEN DAILY 9-9 • SUNDAY 10-4

WE WILL PACK & MAIL
FOR YOU

OUTRIGGER HOTEL

2241 KALAKAUA AVENUE • MOANA HOTEL LOBBY
HAWAIIAN VILLAGE HOTEL • DOWNTOWN 1035 FORT ST.
ALA MOANA SHOPPING CENTER • THE ILIKAI





The Hawaii GUARDSMAN

PUBLISHED QUARTERLY
BY HAWAII NATIONAL GUARD ASSOCIATION

Vol. XVII, No. 3

Third Quarter

Fall, 1971

CONTENTS

LETTERS OF WELCOME	2 - 5
HAWAII'S ROYAL GUARD	6 - 11
HAWAII'S GUARDSMAN OF THE YEAR	14 - 15
ACTIVITIES OF THE 93RD NGAUS CONFERENCE	17
HAWAII'S ARMY GUARD	18 - 21
THE ISLANDS OF HAWAII	27 - 53
OAHU	28 - 31
MAUI	45
HAWAII	45 - 51
KAUAI	52
PIN UP	60

COUNCIL MEMBERS

MG Benjamin J. Webster Ex-Officio
Major Donald M. O'Day Past President
LTC Alexis Lum HARNG
LTC Alvin Majoska HARNG
Major Morio Takahashi HARNG
Major Hon Ping Chee HANG
CPT Robert Watanabe HARNG
Capt Edward Anderson HANG

OFFICERS OF THE ASSOCIATION

Col. James R. Ashford President
Col. John Aiona, Jr. Vice President
Capt. David F. Howard Secretary
LTC Charles M. Wills Treasurer

EDITORIAL STAFF: EDITOR / CPT
Gerry Silva; ASSOCIATE EDITOR, AD-
VERTISING MANAGER / CW3 Duncan
B. K. Chang; BUSINESS MANAGER /
CW4 Thomas See; CIRCULATION MAN-
AGER / CW2 Maurice Souza.

PHOTO CREDIT: Cover - Gerry Silva;
Royal Guard equipment - Bob Nagao;
black and white photos on pages 27
through 54 - Hawaii Visitors Bureau

COVER: Sgt David Langsi of the Royal
Guard, calls the 93rd NGAUS conference
together at the Sheraton Waikiki. Photo
by Captain Gerry Silva.

EDITORIAL OFFICE: Fort Ruger, Honolulu, Hawaii 96816. Terms: Subscriptions, individual and organizations - \$1.50 per year
Single copies, individual - 40 cents. Individual subscriptions should be addressed to Editorial Office, Fort Ruger, Honolulu, Hawaii
96816.



EXECUTIVE CHAMBERS
HONOLULU

JOHN A. BURNS
GOVERNOR

July 22, 1971

Gentlemen:

Ke Hookipa Aku Nei Au Ia Oe Ma O Ka Poe O Hawaii -- I welcome you on behalf of the people of Hawaii.

Your host, the Hawaii National Guard, is very much a part of our community of Islands, with a unique heritage inseparably woven into the fabric of our history.

Our Islands offer much to you, our guests -- a temperate and soothing climate in an incomparable setting. But most of all, we offer the spirit of aloha, drawn from our Polynesian background and influenced by the rich cultures and traditions of countries from the entire Pacific world.

I am confident that your 93rd General Conference will be a productive one, and I hope that each one of you will discover during your stay, as other visitors have for nearly two centuries, that the heart of Hawaii's appeal is the spirit of her people.

Aloha, and may the Almighty be with you and yours always.

Sincerely,

John A. Burns

Delegates and Guests
93rd General Conference
National Guard Association of the United States
Sheraton-Waikiki Hotel
Honolulu, Hawaii 96815

OFFICE OF THE MAYOR
CITY AND COUNTY OF HONOLULU
HONOLULU, HAWAII 96813

FRANK F. FASI
MAYOR



August 5, 1971

Gentlemen:

It is a pleasure to extend a warm aloha and to welcome you and your families to Honolulu for the 93rd National Guard Association of the United States General Conference.

We are pleased and honored that your Association is meeting again in our city. We have pleasant memories of your general conference held here in 1960.

Your selection of Honolulu as the site for your conference is, I'm sure, a tribute to the Hawaii National Guard Association which has Army and Air National Guard members throughout our state.

We know the value of the National Guard in a community, for we have seen the many contributions made to our community by the Hawaii National Guard, both in times of emergency and also in solving everyday problems.

I hope you will enjoy the full program which has been planned for you. Please take time to visit the unique attractions offered not only on Oahu, but also on the neighbor islands.

May your conference be most successful.

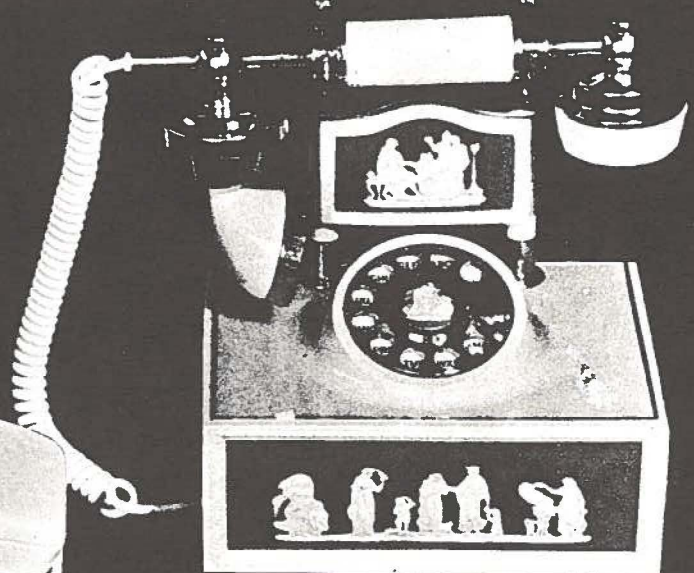
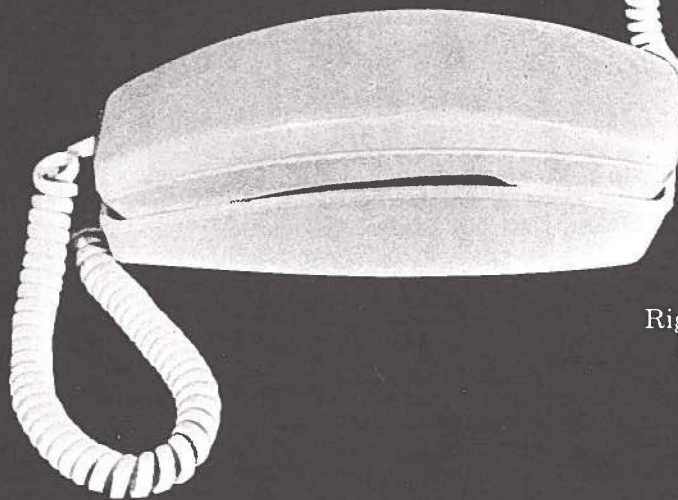
Sincerely,

A handwritten signature in cursive script that reads "Frank F. Fasi".

FRANK F. FASI, Mayor
City and County of Honolulu



The Talk of '71



It's the new Styleline and Decorator Telephones. Right . . . for you. Get one from us on Oahu by dialing 537-7111. On the neighbor islands check our listing in the phone book.

Hawaiian Telephone
MODERN HOMES HAVE SEVERAL PHONES

Exciting. Exotic. Exclusive.



746 Kohou Street
Honolulu, Hawaii

Reservations kindly requested

Phone 841-0000

The National Guard Insures your Future

... We do too!

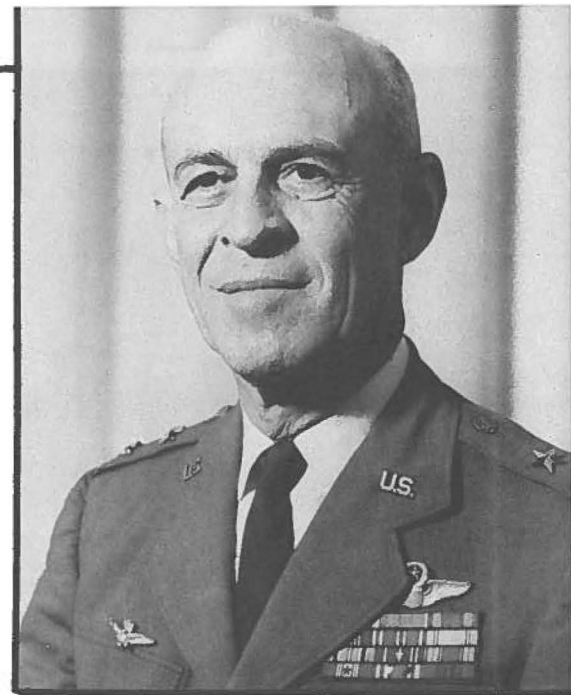


*First Insurance Company
of Hawaii, Ltd.*

Founded in Honolulu 1911 1100 Ward Avenue, Honolulu, Hawaii 96814
Phone 548-5511



STATE OF HAWAII
DEPARTMENT OF DEFENSE
OFFICE OF THE ADJUTANT GENERAL
FORT RUGER, HONOLULU, HAWAII 96816



20 September 1971

Delegates and Guests
93rd General Conference
National Guard Association of the United States
Sheraton Waikiki Hotel
Honolulu, Hawaii 96815

To Our Guests for the 93rd General Conference:

It gives me great pleasure to welcome all of you to Hawaii on behalf of Hawaii's Guardsmen and their ladies. We love our island home and hope that you will love it too.

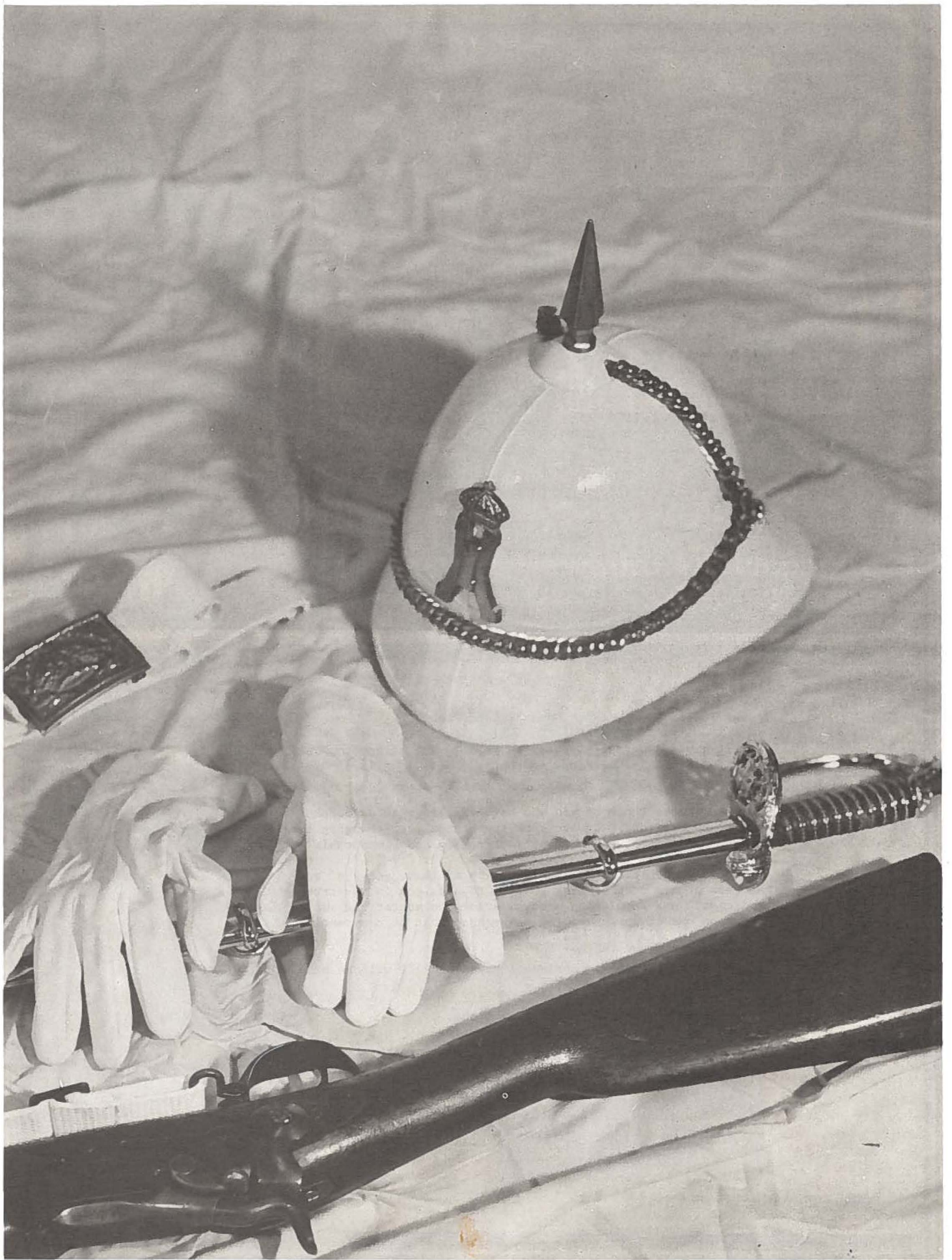
We welcome those of you who have visited with us before as well as our new visitors. We are sure that these ever-changing islands can provide each of you with an interesting and pleasurable stay.

This conference is the culmination of three years of work by hundreds of our people whose goal is to host you in the true Hawaiian tradition. And should any problem arise, no matter how small, please call upon one of our committee members so that he can resolve it immediately.

We wish that your memories of Hawaii in '71 will be of a very happy time in a very happy place.

Aloha,

Benjamin J. Webster
BENJAMIN J. WEBSTER
Major General, HANG
Adjutant General



Hapai-Pu (Carry Arms)

Hawaii's Royal Guard

The Islands of Hawaii are geographically and historically disconnected from the New England-Colonial past with which most residents of continental America identify. The "kamaaina," or local resident, links his background to the statue of the Polynesian warrior that stands before the Judiciary Building, not to that of the Minuteman in a New England town square. Many Hawaiian families plot their geneologies back to missionary forebears who arrived in Hawaii on the "Thaddeus," not in Massachusetts on the "Mayflower." When discussion turns to military exploits, the Hawaiian recounts the battle of Nuuanu Pali, not Gettysburg, and he speaks of Kamehameha and Kahekili with the same fervor that others reserve for Grant and Lee.

The Royal Guard is a unit which was re-created to highlight Hawaii's own military heritage. The Royal Guardsman of Hawaii, like the Minuteman of the Continent, is the symbol with which our people identify and from which they draw strength.

The unit was re-created as the Hawaii Air National Guard's (HANG) contribution to the community's restoration of Hawaii's historic Kalakaua era. The Royal Guard also represents a very successful means by which HANG identifies itself with the unique heritage of our Island-State.

The original Royal Guard was formed during the reign of King Kalakaua in the late 1800's. It was an elite group of 50 men from which the King's body guards were drawn, with a heritage which extended far back into Hawaii's history. The organization was quartered in Iolani Barracks, next door to the royal palace.

The re-created Royal Guard is the product of countless hours of research and the subsequent time required to re-create or recondition its authentic period equipment. The unit is structured in the same way as the original organization. The governing body, or "No Koa Hoomalu Kini O Ka Moi" (King's Body Guards) is composed of five men elected by the general membership. The five men, in turn, select the "Kapena Moku" (Commander of Troops). In addition, they establish policies, approve plans and review operations. The unit includes:

- (1) Three Officers:
Kapena Moku (Captain)
Luna Koa (1st Lieutenant)
Lutanela (2nd Lieutenant)
- (2) Six Sergeants:
He Kakiana (First Sergeant)
Kakiana Ekahi (Sergeant - 1st Squad)
Kakiana Elua (Sergeant - 2nd Squad)
Kakiana Ekolu (Sergeant - 3rd Squad)
Kakiana Eha (Sergeant - 4th Squad)
Kaiana Pu (Ordnance Sergeant)
- (3) Five Corporals:
Kopala Ekahi (Corporal - 1st Squad)
Kopala Elua (Corporal - 2nd Squad)
Kopala Ekolu (Corporal - 3rd Squad)
Kopala Eha (Corporal - 4th Squad)
Kopala Hae (Color Guard Corporal)
- (4) One Drummer (Hookani Pahu)
- (5) Twenty-seven Soldiers (Koa)



**May We? ... Serve You the
Finest Cantonese Cuisine**
Lunch • Dinner • Cocktails

HonKung

3566 Harding Ave.
Kaimuki • Tel. 734-2174
8 minutes from Waikiki



The command "Hapai-Pu" was heard in the Nation's capital during President Johnson's inauguration.

All Royal Guardsmen are members of HANG. They are of Hawaiian descent (to add to the unit's authenticity) and participate on a purely voluntary basis.

The project was begun in 1962 by Colonel Walter F. Judd, Executive Officer of HANG, whose forebears served as cabinet members during the reign of the Hawaiian Kings, Kamehameha III, Liholiho, and Kalakaua.

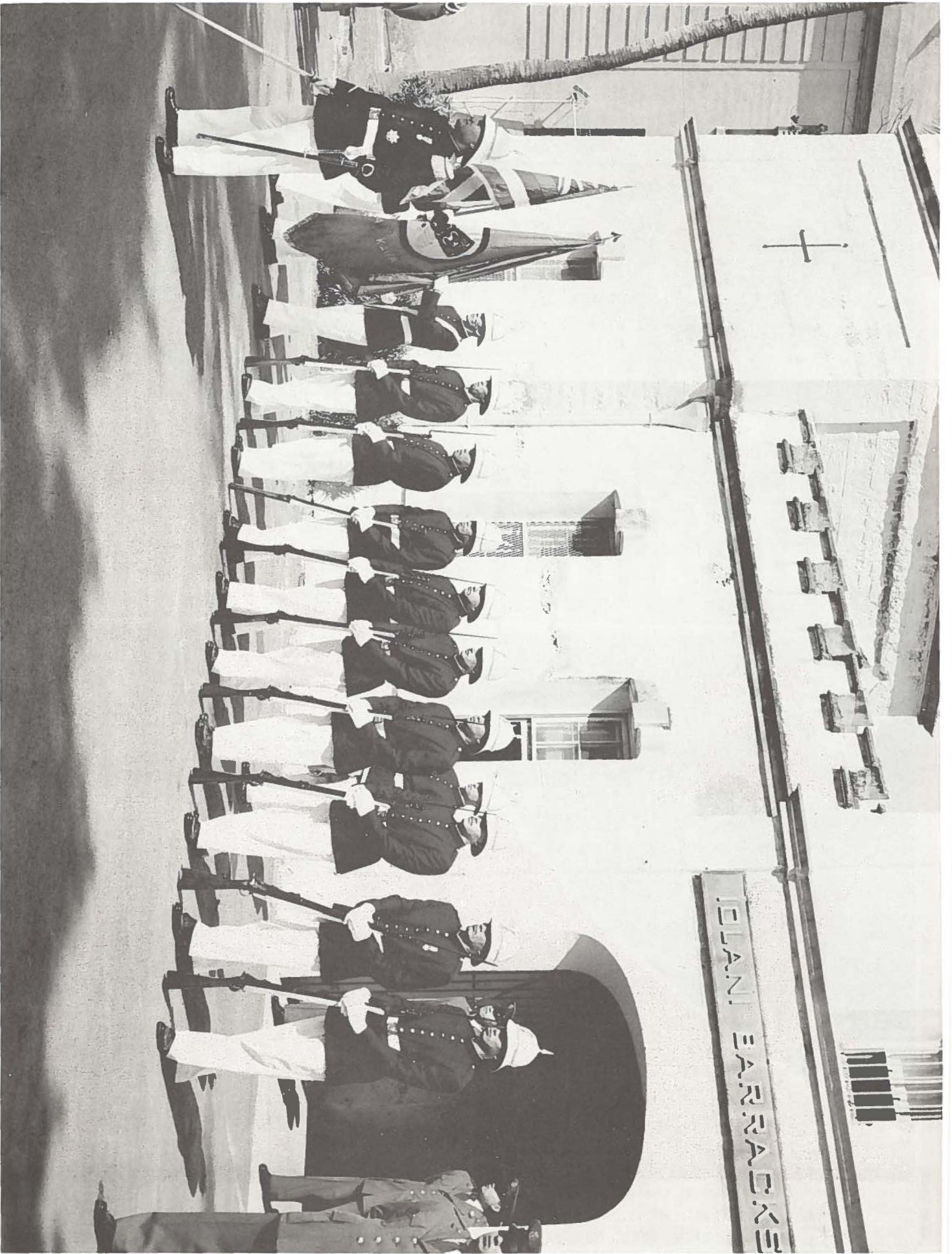
Colonel Judd began the project with a search of the State Archives. Pictures of the original Guard and a part of an old tunic were used to begin the re-creation of the uniforms. Authentic buttons and a buckle were found, and replicas were made by open-faced casting. Most items were donated or made, or in some cases, acquired by shrewd trading. When equipment or apparel had to be purchased,

Colonel Judd and his group raised the money with an assortment of projects, including a benefit luau. On November 16, 1963, the first 14 members of the re-created Royal Guard were presented to the public. They emerged from the doors of Iolani Barracks, heralded by the trumpeting of the traditional Hawaiian conch shell. In the words of a reporter, "They peered around curiously as if seeing the light of day for the first time in 70 years."



*Fly the
fun birds
of Aloha*

FOR INSTANT RESERVATIONS AND TICKETS-BY-MAIL, CALL 841-4211
ALOHA . . . MAKES WHAT YOU WANT TO DO COME TRUE.



Ride with us and be number 1
It's a great feeling!

**NATIONAL
 CAR RENTAL**



We feature General Motors cars

**ALL MAJOR
 CREDIT CARDS HONORED**

Type of Car	Daily	Weekly	Plus Each Mile
Economy—Std. Shift	\$ 8	\$42	10¢
Economy—Automatic	\$ 9	\$49	10¢
Chevy II or Similar	\$11	\$63	11¢

Air Conditioned Sedans or Convertibles
ALSO AVAILABLE AT SLIGHT EXTRA CHARGE.

NATIONAL FURNISHES

ALL GAS AND OIL

NATIONAL OFFICES IN HAWAII

HONOLULU, OAHU
 2160 Kalakaua Avenue
 Phone 922-3331

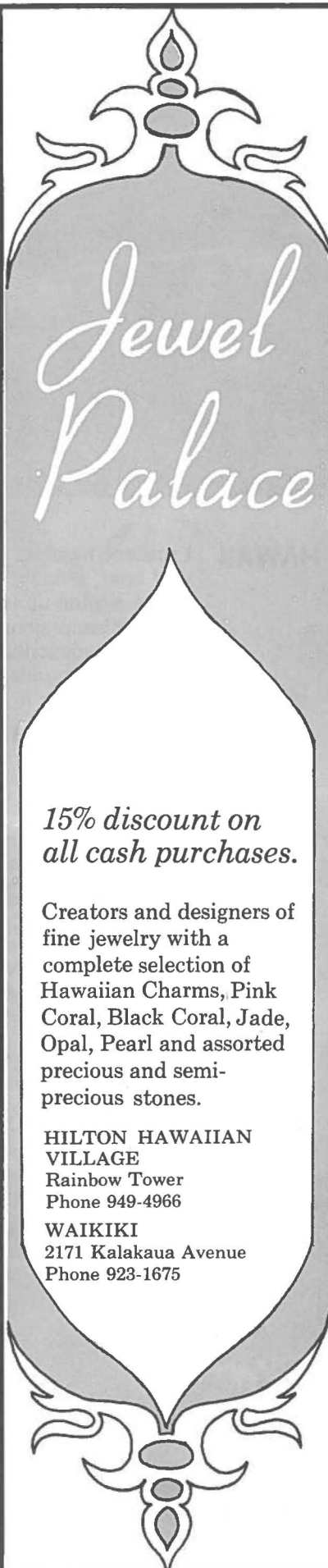
**HONOLULU AIRPORT
 INTER-ISLAND
 TERMINAL**
 Phone 841-1283

**HILTON
 HAWAIIAN VILLAGE**
 2005 Kalia Road
 Phone 949-8545

HONOLULU AIRPORT
 Domestic Arrivals Area
 Phone 841-7558

ALA MOANA HOTEL
 410 Atkinson Drive
 Phone 946-6668

**For Honolulu and Outside Islands
 Reservations Phone 922-3331**



*Jewel
 Palace*

*15% discount on
 all cash purchases.*

Creators and designers of
 fine jewelry with a
 complete selection of
 Hawaiian Charms, Pink
 Coral, Black Coral, Jade,
 Opal, Pearl and assorted
 precious and semi-
 precious stones.

**HILTON HAWAIIAN
 VILLAGE**
 Rainbow Tower
 Phone 949-4966

WAIKIKI
 2171 Kalakaua Avenue
 Phone 923-1675

FLOWER FARM, INC.

49-051 Johnson Road
 Ph. 237-8448

ALA WAI GOLF SHOPS, INC.

Ala Wai Golf Course
 Ph. 737-2822

FOUR SEASONS CHOP SUEY

Waipahu Shopping Plaza
 Ph. 671-7233 or 671-7234
 Open Daily 10:30 a.m. — 8:45 p.m.
 Jet Service Take Out.
 Telephone Your Order Before Pick-Up

HOME UPHOLSTERY

1058 Waimanu St.
 Ph. 531-1810

GOMES SCHOOL BUS SERVICE

47-152 Wailehua Road
 Ph. 239-9221

B. F. DILLINGHAM CO.

Dillingham Bldg., Rm. 401
 Ph. 531-4066

BIGGIE'S BAR

Biggies Liquor Store
 117 Oneawa St. Kailua
 Ph. 262-5446

HOSOI

GARDEN MORTUARY

DAY OR NIGHT PHONE — 583-877
 HERMAN S. HOSOI
 RICHARD H. SAKUMA
 ROBERT M. ISHIHARA 30 N. KUKUI STREET
 ELAINE S. NAKAMURA NUUANU AVENUE

BERTS SERVICE & REPAIR

759 S. King St.
 Ph. 538-6761
 Bert Ikei



HALE LUA HAWAII

91-008 HANUA STREET
 CAMPBELL INDUSTRIAL PARK
 PORTABLE & MOBILE CHEMICAL
 FLUSHING TOILETS

PHONE 682-5641



**SEE SIDES OF HAWAII
"THE JONESES"
NEVER WILL**

Excellent hunting for upland game birds wild boar, mountain sheep (so exceptional it was written-up in *Newsweek* magazine). Exciting excursions to seldom-visited areas of indescribable beauty. Licensed professional guides and top equipment. Adventures you'll never forget.

PHONE 885-7301

**Hawaii
Trails**
Kamuela, Hawaii

**come see what's happening
in the BIG COUNTRY**

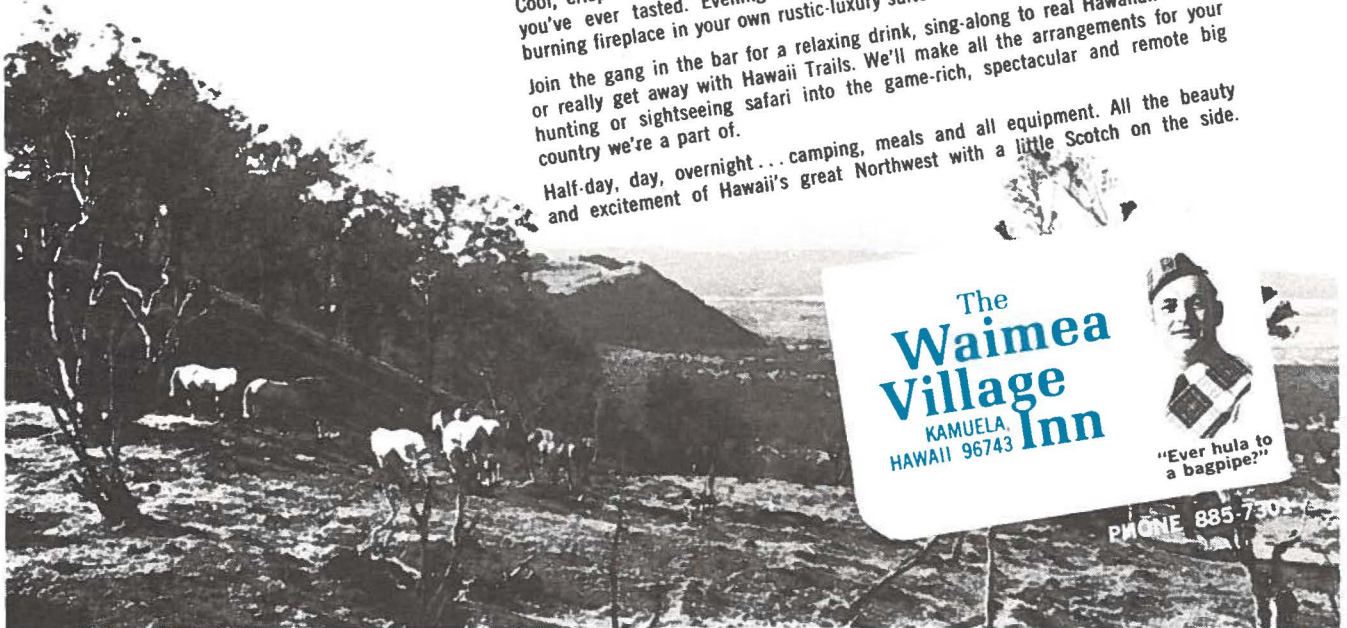
HAWAII'S HIGHLANDS

When you've had all the traffic, turmoil and tension you can take... come on up to the Big Island's BIG Country. We're just a short way up from the hot sun, sand and surf... but what a difference in living!

Cool, crisp mountain air that builds your appetite for the greatest ranch steaks you've ever tasted. Evenings made for unwinding in front of the big wood-burning fireplace in your own rustic-luxury suite.

Join the gang in the bar for a relaxing drink, sing-along to real Hawaiian music, or really get away with Hawaii Trails. We'll make all the arrangements for your hunting or sightseeing safari into the game-rich, spectacular and remote big country we're a part of.

Half-day, day, overnight... camping, meals and all equipment. All the beauty and excitement of Hawaii's great Northwest with a little Scotch on the side.



The
**Waimea
Village
Inn**
KAMUELA,
HAWAII 96743



"Ever hula to a bagpipe?"

PHONE 885-7301



**OUR FUN BIRDS
PUT YOU ON "CLOUD NINE"
EVERY TIME!**

Come . . . fly with us. For Aloha is big, roomy Boeing 737-birds. Bright-eyed, smiling stewardesses. Handsome Polynesian stewards. Your favorite cocktails . . . at nominal prices. We pamper you, until you feel like you're on "cloud nine!" It's **that** delightful.

*Fly the
fun birds of* **Aloha**

FOR INSTANT RESERVATIONS AND TICKETS-BY-MAIL CALL 841-4211

The different hats of 1SG Clement Hew

By SP5 Judd Hambrick

"I feel I was born in the National Guard. I've been in it over half my life. And, let me tell you, Specialist Hambrick, I like belonging to the Guard. As long as they want me here, I'll stay. But, I was shocked to know they selected me for this award."

First Sergeant Clement Hew, Battery A, 487th Field Artillery, is a man who wears a variety of "hats," and while under everyone of them, he does an excellent job.

For example, Sergeant Hew wears the top-fitting Non Commissioned Officers "hat" in the Hawaii Army National Guard this year. He's been chosen the 1971 Guardsman of the Year.

For twenty-two years, he has been actively involved in the Guard. "I joined when I was a junior at the "old Kaimuki High School, in 1940. A friend of mine and I played hokey from school to join."

In talking to Sergeant Hew, it becomes emphatically apparent that he likes the National Guard—but, more than likes it, he respects it. He respects the Guard as much now as he did twenty-two years ago. However, the Sergeant doesn't like some of the changes that have taken place in the Guard since he signed up.

"In the old days, you were told what to do and when to do it; there was discipline. And, there was a certain dedication you had about doing whatever job you had in the Guard."

"In the last few years, many kids joined the Guard to avoid the draft. In my day, you joined the Guard because you wanted, too, and were proud of it. The Guard and the military, in general, is important because in it you get discipline, and discipline is an important part of anyone's life. I think the rules have been to liberal."

About his current job in the 487th, Sergeant Hew says it's his job to supervise. Regretfully, he says he's the only First Sergeant in the entire Brigade who doesn't know how to type. But, what the Sergeant lacks in typing ability, he makes up for in hours spent working in the Company area. He manages to work about one and a half hours everyday at his unit.



K. Miyahira Electrical

Phone 244-4054
2154 Kaohu St. 1826 Kaohu St.

Kanada Contracting Inc.
2151 Hokuahu St.-Wailuku
Phone: 244-0805

And, it's not that Sergeant Hew doesn't have other work to do. In addition to his "hat" in the National Guard, he pursues a full-time civilian job in the City and County Public Works Division of Engineering in Honolulu. He's worked there for nineteen years. He wears a transits man's hat on a surveyor's team. Sergeant Hew believes teamwork is extremely important in a man's life. He believes it takes teamwork to get a difficult job done properly—whether it be in the National Guard, civilian life, or in sports.

Another "hat" the sergeant wears is a coach's cap. He's been a coach of baseball and football at Iolani High School for nine years. The boys he coaches like him and respect him. To use one young man's description, "I think he's a good one." But, like the job he does in the National Guard, his coaching job doesn't come easy. He puts in almost two full days a week for the City, and his hour to hour and a half of extra work at his unit in the Guard each day.

But, even with his 60-hour work week, Sergeant Hew still has time for his family. He and his wife, Ethel, have two children, Clement, Jr. who is 13, and Shendra, 12. They live on Sunset Avenue in Kaimuki. Mrs. Hew is an engineering draftsman with the State Department of Transportation in the Highway Planning Division. Shendra is in the seventh grade in Kaimuki Intermediate School. And, Clement, Jr., is in Iolani High School, where he is actively involved in sports. However, Clement, Jr. wants to play football, so Sergeant Hew is giving up his job as assistant football coach at Iolani because he doesn't feel it's right for a father to officially coach his son.

In summing up his philosophy of life, Sergeant Hew said, "I like to do things for people. Everyone needs guidance now and then, young men, as well as children." And according to Sergeant Hew, the Hawaii National Guard is an excellent place to get that guidance and training. He says he's positive of that because the Guard did it for him.



OCEAN VIEW INN
Kailua, Kona, Hawaii
Phone: 329-1848

Best Wishes Guardsmen
from
Hawaii Grocers Ltd.
20 Lanihuli St. - Hilo
Ph. 935-3791

SHERATON HOTEL VALET SHOP

Specializing in:
Same day service (in by Noon, back by five)
Dry Cleaning
Complete plant in hotel
Ph. 922-4422 Ext. 73420

Hawaiian Western Steel Ltd.

91-150 Hanua Street
Campbell Industrial Park
Ewa, Hawaii 96706
Phone 682-5731

Hale Manu Craft
Panaewa Forest
Ph. 959-7412

Hawaii Funeral Home Ltd.
570 Kinoole Ave.
Ph. 935-8445



ALII SHORES SERVICE

45 1117 KAMEHAMEHA HWY.
KANEHOE, HAWAII

PHONE 247-6877

ALOHA GUARDSMEN
Welcome to Hawaii

COMMERCIAL FINANCE LTD.
1036 Smith St.
Ph. 536-5776

Loans • Personal & Business • Insurance

50th STATE TV

WAIMALU SHOPPING CENTER, AIEA



We use & recommend
RCA Tubes & Parts

PHONE 488-5121

KAYA'S GENERAL MERCHANDISE

53-534 Kam Hiway at Punaluu
P. O. Box 308 - Hauula, Hawaii 96717.

Phone: 293-9095

Go Native Go Hertz

with your 20% discount

Hertz Rent a Car welcomes delegates
to the 93rd Annual General Conference of the National Guard Association
with a 20% discount on Hertz rentals.

Discount Card

Your Ford or other fine air conditioned car
will take you places you would ordinarily miss
on a guided tour. You'll go where you want,
when you want and with whom you want. And at Hertz, you'll be
happy to find the efficient, friendly service that has made us
Hawaii's Number 1 Rent a Car Company.

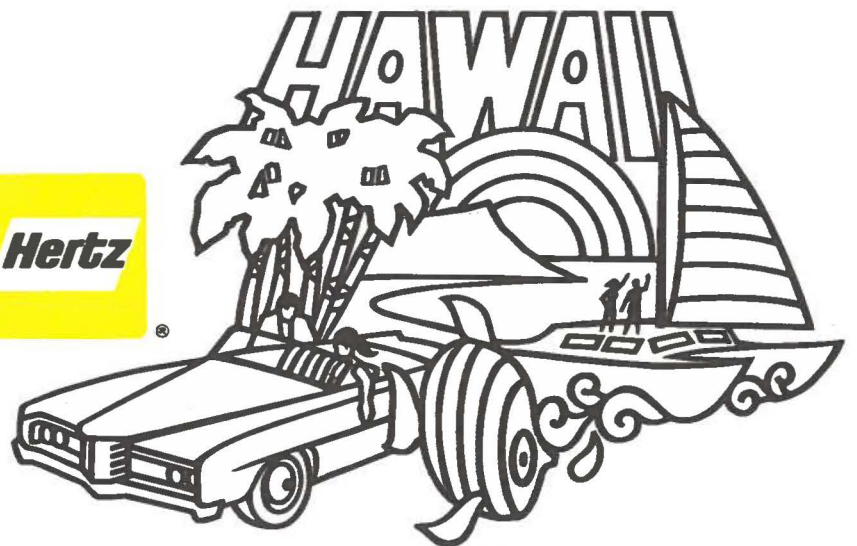
Just bring in your special Hertz courtesy discount card from
your coupon booklet and you'll get 20% off the cost of your rental.

See your Travel Agent

Or call Hertz in Honolulu at 923-1544
to reserve your clean Hertz car. Or stop by one of
our conveniently located offices.

MAIN OFFICE:

2400 Kalakaua Ave.Ph. 923-1544
1920 Ala Moana Blvd.Ph. 949-1466
Hilton Hawaiian VillagePh. 923-1544
Ilikai HotelPh. 923-1544
Kahala Hilton HotelPh. 734-6217



Go Native Go Hertz

PROGRAM

FIRST SESSION: 8:30 a.m., Monday, September 20, 1971

Conference Called to Order: Major General James F. Cantwell

Addresses of Welcome: Major General Benjamin J. Webster
Adjutant General, State of Hawaii

..... Honorable John A. Burns
Governor, State of Hawaii

Report of the Conference Committee Colonel Howard M. Dryden
on Credentials and Rules:

Greetings: Honorable Frank Fasi
Mayor, City & County of Honolulu

Address: General John D. Ryan
Chief of Staff, USAF

Report of the President: Major General James F. Cantwell

Address: Admiral John S. McCain, Jr.
Commander in Chief Pacific

Presentation: The Honorable G. V. Montgomery
Member, Committee on Armed Services
U.S. House of Representatives

SECOND SESSION: 8:30 a.m., Tuesday, September 21, 1971

Address: Major General Francis S. Greenlief
Chief, National Guard Bureau

SEPARATE SESSIONS

ARMY NATIONAL GUARD:

Presiding: Major General Glenn C. Ames

AIR NATIONAL GUARD:

Presiding: Major General Duane L. Corning

THIRD SESSION: 8:30 a.m., Wednesday, September 22, 1971

Report of the Executive Vice President: Colonel James B. Deerin

Address: The Honorable O. C. Fisher
Chairman, Subcommittee No. 2
Armed Services Committee
U.S. House of Representatives

Remarks: Honorable Robert D. Ray
Governor, State of Iowa

Report of the Committee of Finance: Major General Henry W. McMillan

Address: Lieutenant General Hugh M. Exton

Legislative Report: Major General Donald J. Smith

Address: The Honorable Roger T. Kelley
Assistant Secretary of Defense
(Manpower & Reserve Affairs)

Remarks: General William B. Rosson
Commander in Chief, USARPAC

Presentations: NGAUS Awards

FOURTH SESSION: 8:30 a.m., Thursday, September 23, 1971

Report of the Special Committee on Major General Clarence E. Atkinson
Constitution and By-Laws:

Report of the Committee on Time Major General Harold R. Patton
and Place:

Address: General Ralph E. Haines, Jr.
Commanding General, CONARC

Report of the Committee on Resolutions: Colonel Karl N. Smith

Presentations: NGAUS Awards

Report of the Committee on Nominations: Major General John N. Owens

Presentation on 94th NGAUS Conference: Major General Glenn C. Ames

Presentation of Host State Committees

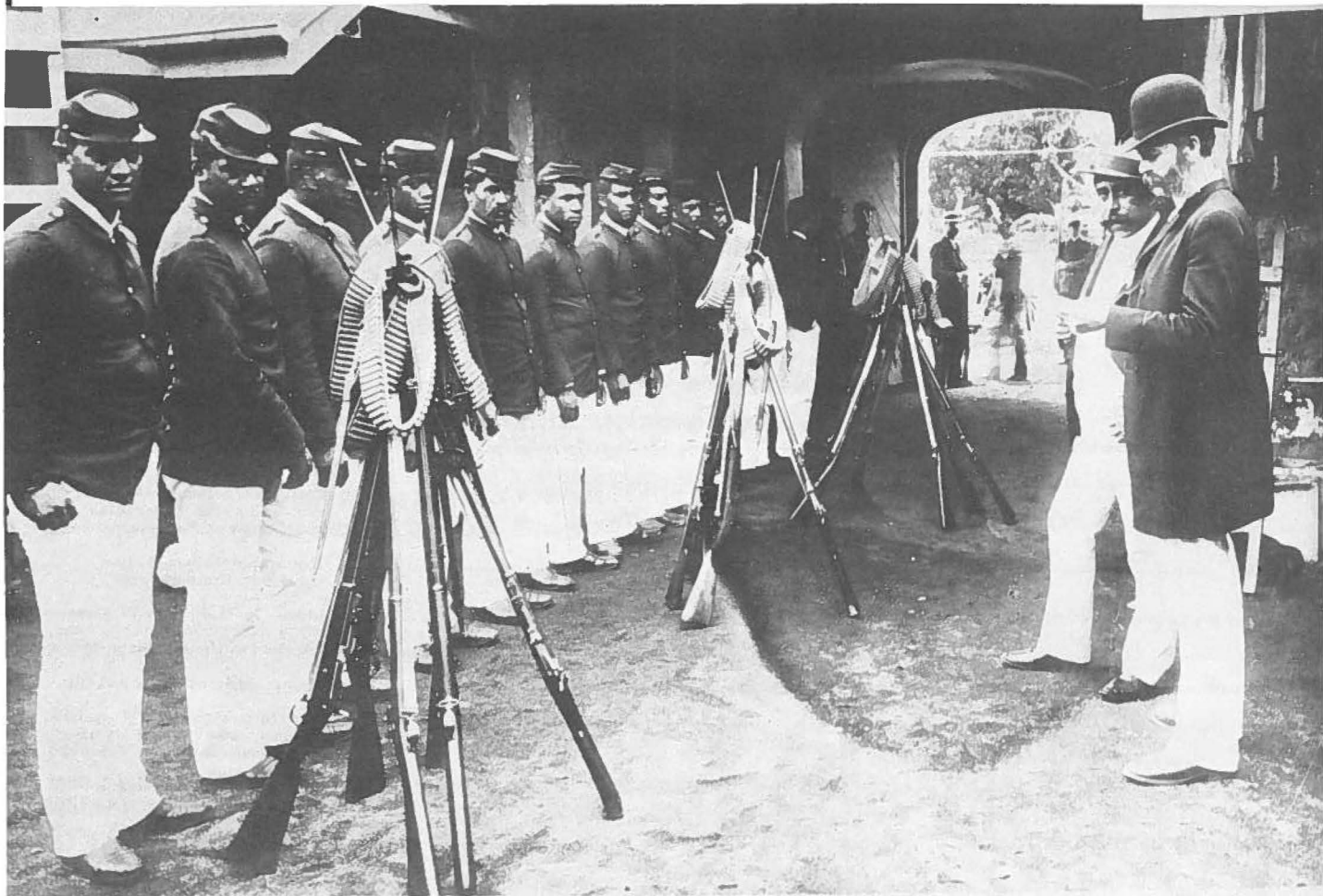
Unfinished Business

Adjournment Sine Die

Hawaii's Army Guard

From royal volunteers

to modern minutemen



The Household Guards of Queen Liliuokalani were dismissed by Colonel John H. Soper prior to the creation of a true militia. Colonel Soper later became Hawaii's first Adjutant General.

LAU HALE GARMENT MFG.
124 N. NIMITZ HWY.
PH. 538-6344

Lindal Homes - South Pacific, Inc.

1015 DILLINGHAM BLVD. TELEPHONE 847-0258



The finest name in pre-cut
Western Cedar Homes
* A wholly owned subsidiary of Lindal
Cedar Homes, Seattle, Washington

Liliha
BAKERY

515 N. Kuakini St.

531-1661

LaRonde

AMERICA'S FIRST REVOLVING RESTAURANT.

ADD: THE ALA MOANA BUILDING AT ALA MOANA CENTER, RESERVATIONS PHONE 943-9178
COMPLETE DINNERS FROM \$1.25 - LUNCHEONS FROM \$1.45
DINNER 5:10-10:30 P.M. DAILY LUNCHEON 11:30 P.M. MON-SAT. SUNDAY BRUNCH 11:30 P.M.

Hawaii's Army Guard units have one of the most unusual and distinctive histories of any of the Army National Guard units in the United States. The Hawaii Guard began as a company of volunteer infantry in the old Kingdom of Hawaii. It overthrew the Royal Government toward the close of the 19th century and became the armed force of another sovereign and independent government, i.e., the Provisional Government and later Republic of Hawaii. The unit finally became a bona fide part of the U.S. militia system after Hawaii was annexed by the United States in 1898.

Whaling in the mid 19th century was a doubled-edge sword. Because of the Island's convenient location in the Pacific fishing grounds, Honolulu became the capital of the whaling industry. This brought not only prosperity but also a situation that threatened the stability of civilized society in Hawaii. Rowdy seamen were a common sight in whaling ports, but in Hawaii during the 1850's, the situation was exceptionally bad. The seamen who brought Hawaii economic prosperity were also the core of its most troublesome criminal element. In 1825, sailors started a riot after one was killed as he created a disturbance at the jail near Honolulu Harbor. The situation rapidly deteriorated. The small Hawaiian constabulary unit was unable to cope with the rioters and the native militia refused to

take action despite orders from the government. As a last resort, the merchants and ship masters, whose businesses were being threatened by the riot, formed a company of infantry and suppressed the riot. The unit was later chartered by the Royal Government as the First Hawaiian Guard. It later quelled other attempted riots and faded away only when the whaling industry ceased to be a major contributor to the Hawaiian economy.

Many former Guard members with foresight knew that a sound business community could exist only with social stability, however, the Royal Government chose to ignore this. Robert Wyllie, the Minister of Foreign Affairs and Secretary of War, spent years trying to establish a reliable military system for the kingdom, but the Legislature refused to act on his recommendations. Finally, former members of the First Hawaiian Guard organized themselves into a company of volunteer infantry called the Honolulu Rifles. This group was prominent from 1857 to 1874 and was the militia unit which responded when the Royal Guard revolted against its officers and challenged the authority of the king.

During the relatively quiet years of the early 70's and 80's, there was little need for a militia, but the political turmoil that followed necessitated the reorganization

of the Honolulu Rifles. The Rifles suppressed the Insurrection of 1889, when rebels seized the palace grounds.

The issue of annexation by the United States gained favor as Hawaii became more and more dependent upon sugar exports to the United States. The spark that ignited the Hawaiian Revolution in 1893, however, was not caused by sugar but by the reigning monarch, Queen Liliuokalani's attempts to arbitrarily abolish the constitution and institute her own set of laws. An Annexation Club, backed by former members of the Honolulu Rifles (which had been disbanded after the revolt of 1889), seized the royal palace and government buildings without a struggle from the Queen's Guard.

Sanford B. Dole was installed as head of the new provisional government and later the Republic of Hawaii, a more permanent system of government. The former Riflemen and some new recruits were organized into 4 companies of volunteers of 267 men and officers; 2 companies of regulars of 117 men and officers, and 1 company of sharpshooters of 56 men and officers. They were backed by a Citizens Guard (a type of home guard) of approximately 600 civilians. An attempted insurrection by Royalists was quickly put down by the

COME SAIL WITH US ABOARD THE

ALE ALE KAI V

THE GIANT 100-FT.
PINK CATAMARAN

2 cruises in one—the romance of a sail boat ride and cruising along on a powerful yacht.

Experience the thrill of old Hawaii (the Ale Ale Kai V was built from the designs of the giant double hulled war canoes of the ancient Polynesians) with luxury and comfort of the 20th century.

A lovely Hawaiian crew of kanes and wahines.

FOR RESERVATIONS

CALL 537-6355

CATAMARAN ALE ALE KAI V

SUNSET DINNER SAIL

"For the Young at Heart"

- Dinner at sea as you watch the sunset
- Mai Tais and beer — all you can drink
- Dancing on the spacious after deck
- Music and entertainment by the crew
- Hula lessons



new government's army called the National Guard of Hawaii.

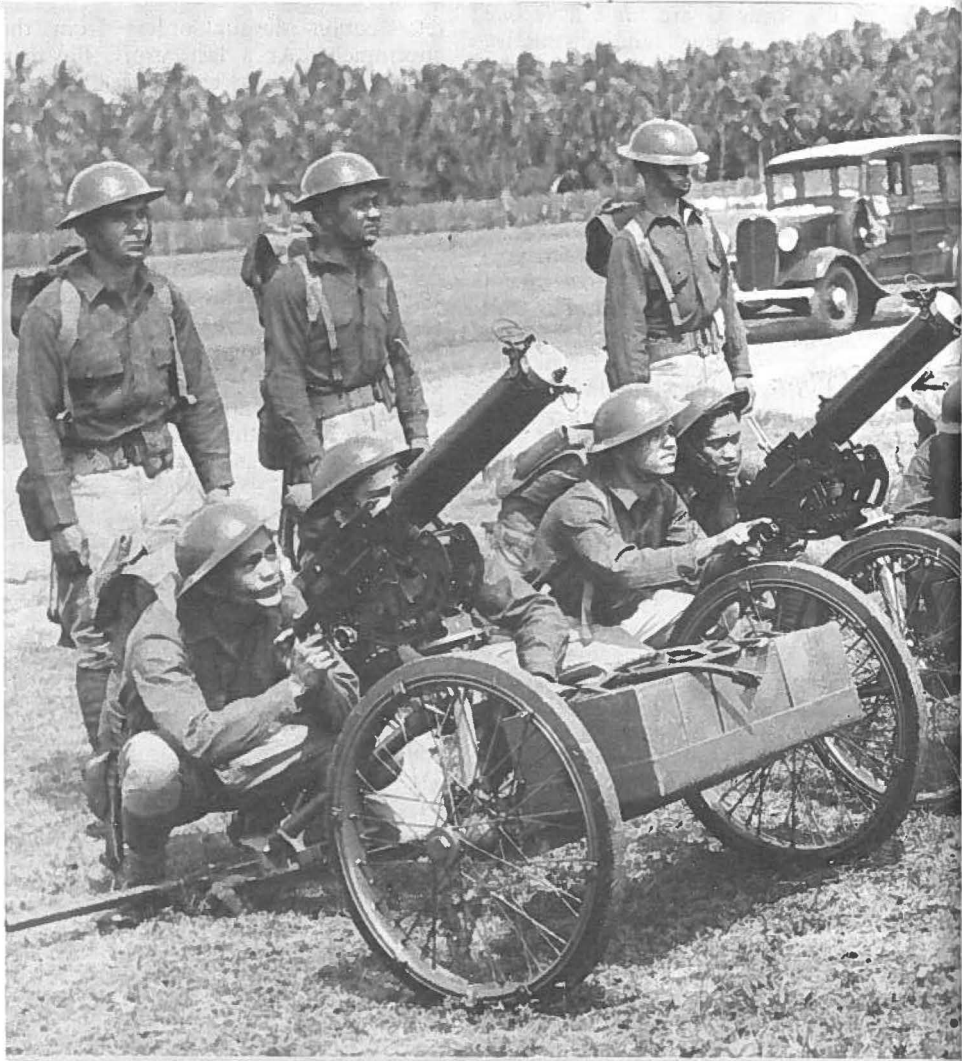
Annexation by the United States was accomplished in 1898, and the Organic Act of 1900 made Hawaii a territory. The former Honolulu Riflemen had become a part of the American military system, and the National Guard expanded rapidly during the years preceding World War I. An unusual practice that started during the days of the Hawaiian Revolution and which continued up until World War II was the existence of ethnic companies. Companies made up entirely of Portuguese, American, Chinese, or Filipino soldiers were not uncommon. During this period too, Guard units were organized on the other Islands. Prior to this, all of the units had been located on the Island of Oahu. Although the laws of the Kingdom of Hawaii provided for militia units on all Islands, these units were virtually non-existent. A naval militia was also added in 1916 at the suggestion of the Secretary of the Navy.

The National Guard of Hawaii was mustered into federal service upon America's entry into World War I to replace Hawaii's regular army units that were being sent to France.

Peace came again but now the Guard had to struggle for its existence. The prevailing attitude of isolationism did not recognize the need for a territorial militia and considered the post-World War I Hawaii National Guard as a social club which existed at the expense of the taxpayers. It was further regarded as a completely unnecessary military force because of the availability of federal troops based in the territory.

The pressure to do away with the Guard subsided as international pressures mounted during the late 1930's. Finally, President Franklin Roosevelt activated Guard units throughout the United States, including Hawaii's units, on October 14, 1940 for one year of active duty training. This was later extended for 18 months. Before their term of service expired, Pearl Harbor was attacked. The Hawaii National Guard spent the rest of the war on active duty until it was restored to the Territory in late 1946.

By 1948, the Guard had been reorganized into the forerunner of to-



During the 1920s and 1930s, the Hawaii Guard trained with these water-cooled machine guns.

day's organization.

Several major events, however, were still to occur within the post-war HARNG.

In 1959, the 298th Anti-Aircraft Artillery Group became the first Guard organization to adopt a full-time air-defense mission with the sophisticated Nike Hercules missile system.

The 298th also became the only Guard

unit in the nation to man its own air defense command post. It provided the final link in the nation's only all Guard air defense chain—early warning by HANG's 150th and 169th Aircraft Control and Warning Squadrons, interceptors provided by the 154th Fighter Group, and the 298th's surface-to-air missiles.

The 298th's mission was to last for 11

Two Fine Restaurants
Not the Best, but Hard to Beat
Steak 'N Lobster
135 Kalaniana'ole Ave. Ph. 935-8911

Yama's Fender Shop
920 Palm Ave.
Phone: 621-7933



DIAMOND BAKERY CO., LTD.

PHONE 949-1407 • 949-8530
1765 SOUTH KING STREET



P. O. BOX 1038
HONOLULU, HAWAII 96808

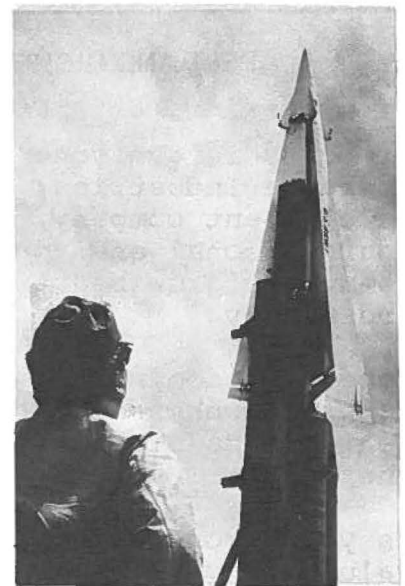


CONGRATULATIONS GUARDSMEN

from
INVESTOR'S EQUITY LIFE
INSURANCE CO. OF HAWAII, LTD.



Today's Guard trains with the latest equipment — including this missile-firing Sheridan assault vehicle. The M79 grenade launcher is a far cry from the militiaman's musket.



years and its units were to establish world records and an enviable reputation during that time.

A major event occurred in mid-1968 when the 29th Infantry Brigade was called to active duty following the Pueblo incident. The men of the 29th spent over 19 months on active duty, and over half served in the Republic of Vietnam.

The year 1970 brought the last of the

major changes in the Hawaii Army National Guard. The Brigade had returned, its ranks badly depleted, and was in the early stages of rebuilding.

In April, the 298th Artillery Group's colors were cased as the unit ended its 11 year active air defense mission. Reorganization followed and the 298th Field Depot, a supply and service organization, emerged as the Artillery Group's replace-

ment.

Today's Army Guard is a far different organization than the company of militia that quelled the seamen's riot over a 100 years ago. It is a modern and diverse organization which offers complex technical training as well as the time honored combat skills. It is an organization that has made a successful transition from a Polynesian past into a fast-paced present.

Aloha

National Guard Association
From The World's
Time Keeper. SEIKO!



SEIKO
CENTER, LTD.

ALA MOANA SHOPPING CENTER / ground level near escalator

ALOHA! NATIONAL
GUARDSMEN
YOUR RCA DEALER
SALUTES YOU

RCA

BEST AND HIGHEST USE

Property is everyone's vital asset. Reliance Industries, Inc. is a total development company, designed to help your personal environment and your community grow beautifully, profitably and wisely.

Superb condominiums in Honolulu-ultra-modern townhouses in northern and southern California continue to prove the point.

Is your property achieving maximum value for you? Why not participate in the kind of total development planning and management only Reliance can offer you?

Please call us.



RELIANCE INDUSTRIES, INC.
1523 Kalakaua Ave. Honolulu
Phone (808)946-3961

Honolulu's most
successful Jeweler
loves to
give it away!

**SAVE
15%**

THAT'S RIGHT, YOU CAN SAVE 15%
ON ANYTHING YOU BUY IN OUR STORES.*

FEATURING HAWAII'S LARGEST SELECTION OF
14k gold and sterling silver
Hawaiian Charms

Jade · Opals · Pink and Black Coral · Pearls
Diamonds · Colored Gems · Gold Jewelry
Hawaiian Jewelry · Gift Items

PRESENT YOUR NATIONAL GUARD
COURTESY COUPON

TO RECEIVE YOUR 15% DISCOUNT

*Fair Traded Items Excepted.

WE ACCEPT ALL MAJOR CREDIT CARDS

**SECURITY
DIAMOND**



**CONRAD
JEWELERS**

HAWAII'S LEADING JEWELERS FOR OVER A THIRD OF A CENTURY

ALA MOANA HOTEL · ALA MOANA CENTER · ILIKAI HOTEL



Koolau Nursery & Landscaping Co.

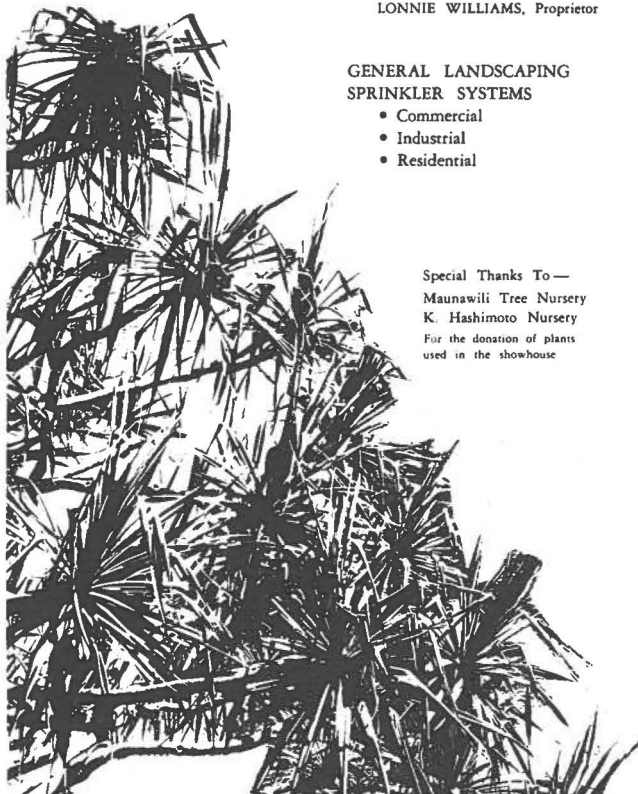
P.O. Box 36 · Laie, Hi 96722 · Phone 293-5308

LONNIE WILLIAMS, Proprietor

GENERAL LANDSCAPING
SPRINKLER SYSTEMS

- Commercial
- Industrial
- Residential

Special Thanks To—
Maunawili Tree Nursery
K. Hashimoto Nursery
For the donation of plants
used in the showhouse



**Fashions from the
Philippines**



Barong
Tagalog, 20.00
Man's shirt for
formal wear. Sizes
by neck and sleeve
measurement.

Polo Barong
\$12.50
wash 'n wear
sizes 14,16,18

Barong
Dress, 35.00
Delicately colored
embroidery. Sizes
10, 11, 12.



Phone: 949-7611
1144 ALA MOANA CENTER
STREET LEVEL

THE
VESSEL

HAWAII STATE



PEARL HARBOR CRUISE

DAILY CRUISES INCLUDING WAIKIKI AND
from HONOLULU HARBOR SHORELINES
KEWALO BASIN Featuring GLASSBOTTOM for
(FISHERMAN'S WHARF) Underwater Viewing
1:30 P.M.
9:30 A.M.

Delightful 3 HOUR CRUISE of Pearl Harbor including
"Battleship Row", Arizona Memorial, Ford Island and
other fascinating points of interest with COMPLETE
NARRATION of the December 7, 1941 attack. Bring
your camera. **\$7.00** Incl. Tax

FOR INFORMATION PHONE Child Under 12
\$3.50

WADSWORTH'S INC.

YOUR WAIKIKI BONUS PHOTO HEADQUARTERS
OFFERS A 50c
DISCOUNT ON YOUR KODACOLOR FILM DEVELOPING
FOR

BONUS PHOTO

1 COUPON PER ROLL



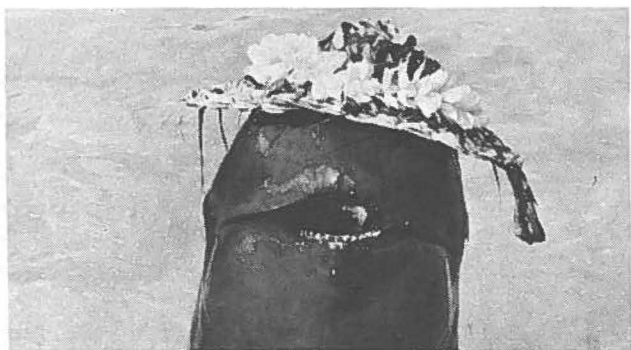
OVERNIGHT SERVICE SUNDAY THROUGH
FRIDAY NIGHTS

PLUS OUR SPECIAL FREE GIFT
FOR EACH ROLL OF FILM LEFT WITH US FOR
PROCESSING, WITH A COUPON.

DIRECTLY ACROSS THE STREET FROM THE
ENTRANCE TO THE ROYAL HAWAIIAN HOTEL.

AT: "THE
F: STOP TOO"
2234 KALAKAUA AVE. PH. 923-3688

OR: "THE
F: STOP"
KAHALA MALL PH. 737-6636



Only in Hawaii

Sea Life Park is a tropical experience you
can enjoy only in Hawaii. See . . .

- The Hawaiian Reef — life at three fathoms in a living coral reef.
- Kaupo Fishing Village — museum of early Hawaiian life with the sea.
- Whaler's Cove — where an exciting Hawaiian Sea Pageant is presented.
- Ocean Science Theater — views of man's challenge in the deep.

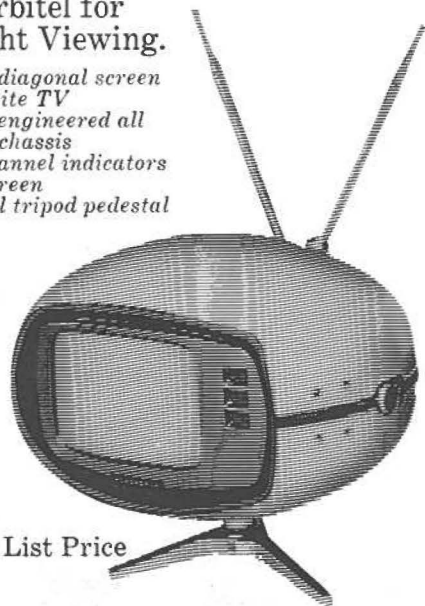
15 scenic miles
from Waikiki
Across from
Makapuu
Beach Park
Phone: 259-7933
or 923-1531

SEA LIFE PARK Oahu,
Hawaii

Attention earth people

See the Orbital for
out-of-sight Viewing.

- Unique 5" diagonal screen black & white TV
- Space-age engineered all solid-state chassis
- Lighted channel indicators & tinted screen
- On a swivel tripod pedestal



TR-005
Suggested List Price
179.95

Panasonic

just slightly ahead of our time.

WALTER LUM Associates Engineers 3030 Waiālae Ave. 737-7931		SCRAP DISPOSAL HAWAII, LTD. <small>415 KETHEE ST. SUITE 170 HONOLULU HAWAII TELEPHONE 533-4747 HONOLULU HAWAII 96813</small> KAILUA AUTO WRECKERS, INC. BOX 336, KAILUA, HAWAII 96734 .TELEPHONE 262-6548	
KAILUA FURNITURE 56 Oneawa St. Ph. 262-6531		HAROLD Y. ISHII General Contractor 4544 Waikui St. Ph. 847-4441	
ARMOUR & CO. 520 Kamakee Street 533-6231	The Esmond 66-150 Kam Hwy. 637-4645 Haleiwa, Hawaii	Hawaii Fire Fighter's Assn. Rm. 202 2305 S. Beretania Ph. 949-1566	
Pacific Express, Inc. 645 Bannister St. Ph. 847-1358	ALOHA SHOYU CO., LTD. 609 Waiakamilo Rd. 841-7411		Johnny's Fashion Tailor 3332 Campbell Ave. Ph. 732-0995
PACIFIC FIRE PROTECTION, INC. 2121 Kaliawa St. 845-6611	Arakawa's Shell Service Ph. 622-4757 721 Kilani Ave. Toshitako Arakawa Prop.	Kamoi Coffee Roasters 913 Sheridan St. Ph. 946-4678	
Suga Care Home 91-814 Pohakupuna Ave. Phone: 689-6421	B & K Superette 87-1680 Farrington Hwy. Ph. 668-1451	Mahalo to our National Guard Long & Melone, Ltd. (Complete Title & Escrow Services) Suite 601, 333 Queen St. Ph. 536-3866	
Tic-Tac-Toe Lounge 3rd Level, Aiea Shopping Center Phone: 423-9455	Aiea Liquor, Inc. 98-390 Kam Hwy 488-4129 Aiea, Hawaii	MOILILI STORE Phones: 949-1662 949-3223 2643 So. King St.	
Mahalo Guardsmen Agsalda Care Home 67-367 Kukea Circle—Waiālua Ph. 637-5608	Burns International Rm. 402, 1311 Kapiolani Blvd. Phone: 531-1327	Okuhara Foods, Inc. 113 Ahui Street 533-2772 Honolulu, Hawaii	

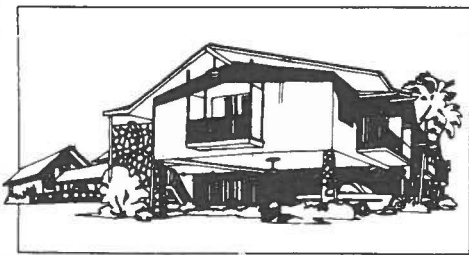


ALOHA NATIONAL GUARDSMEN

TO OR FROM HONOLULU, STAY ON THE VALLEY ISLE OF MAUI AT TRAVELODGE AT LAHAINA, A FAMILY TYPE MOTOR HOTEL WITH REASONABLE RATES FOR ROOMS AND RESTAURANT IN HISTORIC LAHAINA.

OR

STAY ON THE BIG ISLAND OF HAWAII AT THE TRAVELODGE AT HILO, ON BEAUTIFUL HILO BAY – A PERFECT LOCATION FROM WHICH TO SEE THE VOLCANOES, ORCHID GARDENS, AKAKA FALLS!

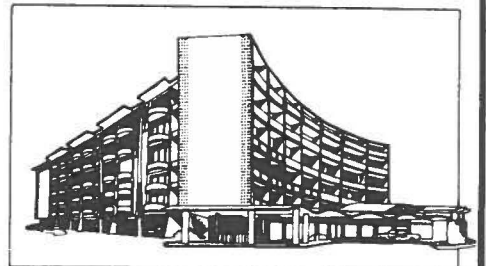


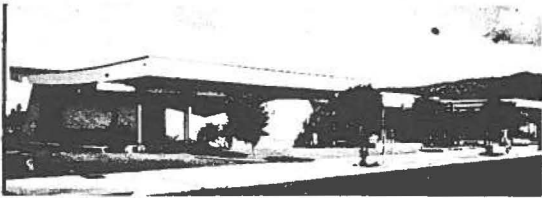
FOR RESERVATIONS

PHONE TOLL FREE:
 (800) 255-3050—ON MAINLAND

OR

955-4477—IN HONOLULU





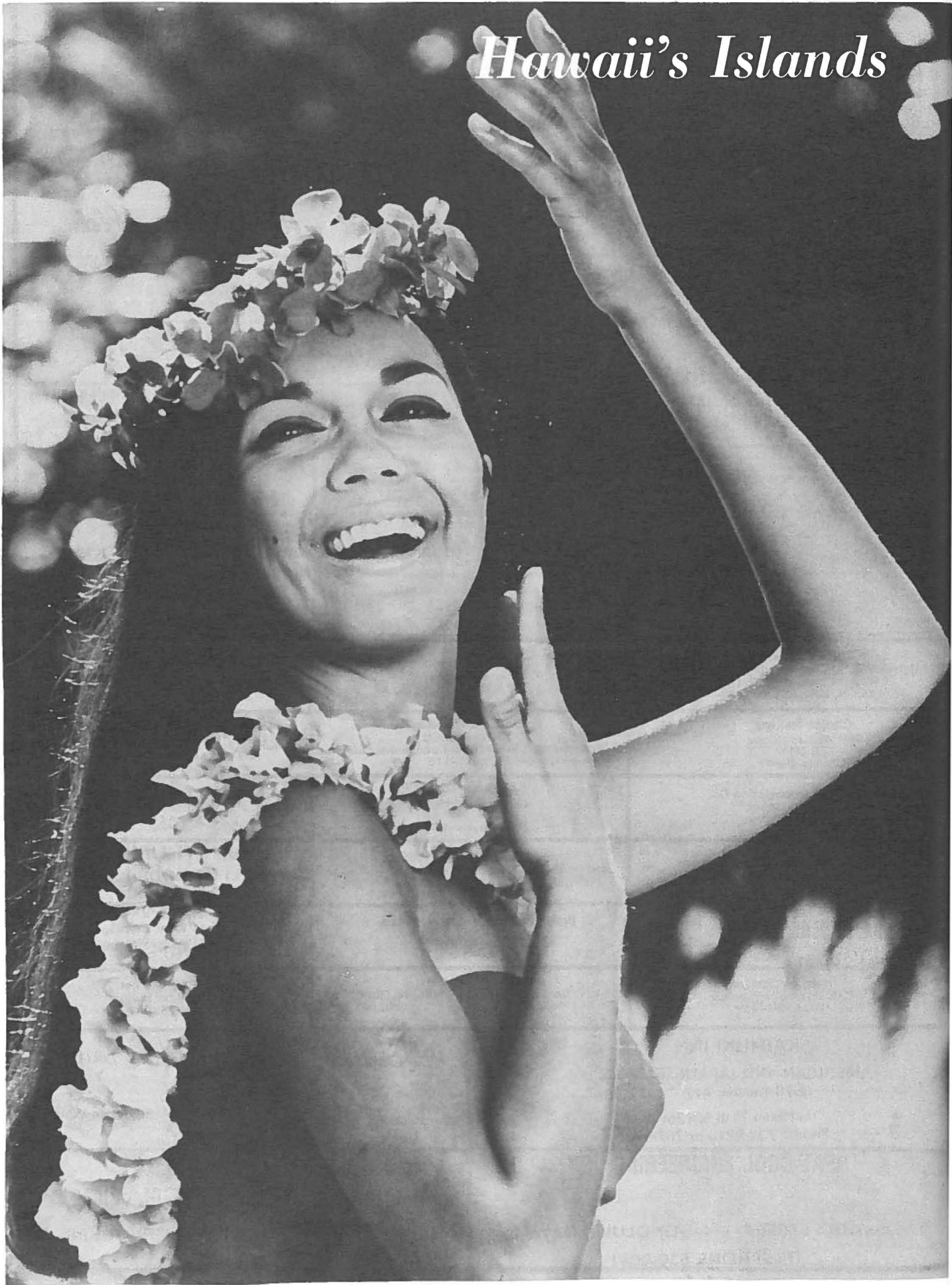
Borthwick Mortuary, Ltd.

DISTINGUISHED SERVICE THROUGH THE YEARS

CORNER KUKUI & MAUNAKEA STS. PH. 531-3566
(For personalized service)

<p>Aileen's Beauty Salon Hair & Wig Styling—Evenings Sun. by Appt. Air Cond.—Free Parking 1252 N. King St. Ph. 841-6052</p>	<p>The Dog House 923 Kapahulu Ave. Ph. 732-1055</p>	<p>Fuji Carpenter Shop 717 Moowaa Street 841-1181 Honolulu, Hawaii</p>
<p>Choice Bakery 3447 Waialae Avenue 732-2244 Honolulu, Hawaii</p>	<p>Dot's At Wahiawa 130 Mango St: Specializing in Breakfasts, Luncheons, Dinners Ph. 622-4115</p>	<p>GARD-COTE RUSTPROOFING 1414 MAKALOA STREET PHONE 941-5377</p>
<p>City Wide Transportation Co. 789 Mapunapuna Ph. 839-5946</p>	<p>Marian's 130 Mango Street 621-6758 Wahiawa, Hawaii</p>	<p>General Tire Service 505 Waiakamilo Rd. Ph. 841-6111</p>
<p>Cyr's At Waianae Cocktail Lounge 85-849 Farrington Hwy. Ph. 696-2543</p>	<p>Ewa Beach Taste Freez Ewa Beach Shopping Center Ph. 689-6211</p>	<p>GREEN THUMB, INC. 3363 Campbell Ave. 732-2868</p>
<p><small>"Since 1935"</small> deROCHER co. Ph. 839-9021 <small>An Amfac Co.</small> 2846 AWAALOA ST.</p>	<p>Frank's Termite Service, Ltd. 244 Kalihi Street 845-0542</p>	<p>H & H CHEVRON 47-537 KAM. HWY KAHALULU, HAWAII PHONE 239-8203</p>
<p>Haleiwa Theatre P.O. Box 488—Waiialua Ph. 637-4145</p>	<p>Happy's Drive-in 731 N. King St. 3003 N. Nimitz wy. Ph. 841-4833 Ph. 845-1611</p>	<p>Haaula Kai Market 54-295 Kam Hwy. Ph. 293-5200</p>
<p style="text-align: center;">KAIMUKI INN AMERICAN AND JAPANESE FOOD 3579 Waialae Ave. between 11th & 12th Ave. Phone: 732-9218 or 737-5785</p>		<p style="text-align: center;"><i>Holiday Jewelers of Hawaii</i> Rachel's Coral Creations Manufacturer • Importer Sheraton-Waikiki full selection of jewelry</p>
<p style="text-align: center;">HEAT-COOL ENGINEERING, INC. 633 AHUA STREET — HONOLULU, HAWAII TELEPHONE 839-9091</p>		<p style="text-align: center;">LILLIE CONTINENTAL MECHANICAL CORPORATION 2895 UALENA STREET HONOLULU PHONE 847-1141</p>

Hawaii's Islands





Oahu

home of the:

154th Ftr Gp

29th Brigade

298th Depot

169th AC&W

201st MCS

By Sp4 Judd Hambrick

Mark Twain described Hawaii as "the loveliest fleet of islands anchored in any ocean," an apt description of the lush Hawaiian chain. And Twain was not the only writer whose imagination was stirred by the eight "Magic Islands" of Hawaii. Robert Louis Stevenson, William Allen White and James Michener have each penned enchanting sketches about the Islands for millions to dream about. And from these writings, many imaginations have been captured—captured and whisked away to what has been called "the last of the Magic Isles."

The capital Island of the chain is Oahu. It is only the third largest island in the group, but far and away the wealthiest and most important island of them all. Oahu is 40 miles long, 26 miles wide, has an area of 604 square miles and a population of nearly 650,000 people.

A basic reason for Oahu's importance is its transportation centers. Honolulu Harbor, the center for commercial shipping, is located there as is Pearl Harbor, home of the United States Pacific Fleet. In between these two harbors are Honolulu International Airport and Hickam Air Force Base, home of the Pacific Air Forces, HANG's 154th Fighter Group, and its 201st Mobile Communications Squadron. Oahu is the transportation hub of the Pacific.

The island offers a variety of attractions for both the visitor and resident. The 93rd Conference has been headquartered in Waikiki—famed throughout the world for its sun, sand, and surf. Its beaches are the primary destination of most of Hawaii's visitors—visitors that now number about one and a half million a year. And in addition to the beaches, lovely scenery, and ideal year-round climate, Waikiki offers an international array of shops, restaurants, theaters, and musical attractions. The Ala Moana Shopping Center, one of the world's largest, is a five-minute drive from the heart of Waikiki.

Deep sea fishing enthusiasts will find charter boats galore at Kewalo Basin, a block away from Ala Moana. Or, rides on large ocean-going catamarans or an authentic barkentine are available for relaxed seafaring. Yes, Waikiki is the gateway to fun and adventure in Hawaii.

In the city of Honolulu, there are several historic buildings to visit. The Iolani Palace is the only Royal Palace on American soil and it's located in downtown Honolulu. The Palace was built in 1879. It housed Hawaii's kings during the late 19th centuries, was later used as the seat of Territorial government, and was the State Capitol from 1959 until 1968. In the last three years, the Palace has also been associated with the top-rated television show "Hawaii 5-0." In the television show, starring Jack Lord, a part of the Palace is the headquarters for a fictitious law enforcement agency, "5-0." Although the agency is fictional, confused tourists have gone into the Palace and asked the guards to direct them to "5-0."

The new State Capitol is across the street from the Iolani Palace. It's a building of which the citizens of Hawaii are extremely proud. The beautiful six-story building—of striking modern design—has been in use for over three years now, housing both branches of the legislature and the executive branch of the State government. The Commander-in-Chief of the Hawaii National Guard, Governor John A. Burns, lives in the home across the street from the capitol.

Kawaiaha'o Church, Hawaii's Westminster Abbey, is a short walk away. The church was built of coral blocks in 183 and is noted for its Hawaiian language services.

The Bishop Museum, a ten-minute freeway drive from the Capitol and church, in the Kalihi section of Honolulu is considered the Hawaiian research center of the Pacific. Scholars there pursue a wide range of studies. Visitors can view fascinating collections of Hawaiian and objects from other Pacific Islands, as well as a modern Planetarium Observatory. The museum's Hawaiian feather capes, helmets, kahilis, and other examples of Hawaiian art are the world's finest. The story of Hawaiian life is presented in the main hall. An authentic grass hale (house) and a scale model of an ancient heiau (temple) can be seen on the first floor.

Three extinct volcanic craters make up a large part of Oahu. One crater is called Punchbowl. The Hawaiian name for it is Puowaina, meaning Hill of Sacrifice. The Pacific National Memorial Cemetery located there, was officially opened on September 2, 1949. The dead of World War II, the Korean War, and the Vietnam Conflict are buried in Punchbowl which is open to visitors from sunrise to sunset daily.

Another extinct volcano is world famous Diamond Head. Inside the crater which can be entered through two long tunnels, are maintenance facilities for the National Guard in Hawaii. The Headquarters of Hawaii's National Guard units are located on its slopes. A drive into Diamond Head is a must on an Oahu itinerary. The landmark was called Leahi by the Hawaiians, a word which means "the place of fire." Leahi came to be called Diamond Head in the early 19th Century when British sailors found a pocket of gleaming crystals that they thought were diamonds.

Oahu's third crater is Koko Head. It is a prominent landmark on the eastern tip of Oahu, and the scene of the most recent volcanic activity on the Island—about 10,000 years ago (hardly anyone remembers it). Hanauma Bay, a scenic bay near Koko Head on Oahu's eastern tip, is a that remains of another of the craters formed at that time. The Blow Hole, a natural hole in the lava ledge along the rocky shoreline, is a short drive from Hanauma Bay. Wave action forces water up through the opening in geysers.

Sea Life Park, a large oceanarium complete with porpoises, penguins and performing whale, is another attraction on Oahu's east coast. The Park is about five miles from units of HANG's 297th Supply and Service Battalion.

The eastern coast of Oahu is called the windward side and it also contains Kaneohe Bay, one of the most beautiful stretches of water in the Islands. The waters in the Bay are ideal for sailing and



water skiing. The armory of Battery C of HARNG's 487th Field Artillery is located there. Kaneohe Bay and much of that side of the Island can be viewed from the top of a thousand foot precipice, Nuuanu Pali (Pali means precipice in Hawaiian) that overlooks the windward side.

King Kamehameha, the first king of the Islands, sailed from the Island of Hawaii and marched on Oahu in 1794. He conquered Oahu, but hundreds of the vanquished defenders of the Island leaped from the top of the Pali, dashing themselves to pieces on the rocks below rather than acknowledge defeat.

The Mormon Temple at Laie, is another windward point of interest that is visited by thousands of people each year. The temple is 38 miles from Honolulu. It was built in 1919 by Samuel E. Wooley, manager of the colony. The structure cost \$200,000 and was built on a city of refuge, an ancient site sacred to the Hawaiians.

The Polynesian Cultural Center is also at Laie. It is a village authentic in every detail, and designed and built to preserve Polynesian culture. Like the Mormon Temple, the Center is also a project of the Mormon Church. As Robert Louis Stevenson wrote, the Mormon Church

"finds its way into the hearts of proud Polynesians as does no other Church."

Another village on the windward side, Ulu Mau (ever growing) Village in Kahaluu, is an absolute must on a visitor's itinerary. The Village is a setting where life is carried on as it was in 16th Century Hawaii. Only Hawaiian is spoken among the villagers as they go about their duties, weaving mats from lauhala leaves, pounding taro roots into poi, making rope from the hau plant, thatching small huts, re-enacting ancient ceremonies, and occasionally, enjoying ancient Hawaiian games.

LAIE CONCRETE & AGGREGATE, INC.

P.O. Box 1193 - Laie
Ph. 293-9171

MARY'S MALASADAS

2877 No. Nimitz Hwy.
Ph. 841-5911

PNEUMATIC EQUIPMENT, LTD.

1806 Homerule St.
Ph. 841-3646

ROYAL CONTRACTING CO., LTD.

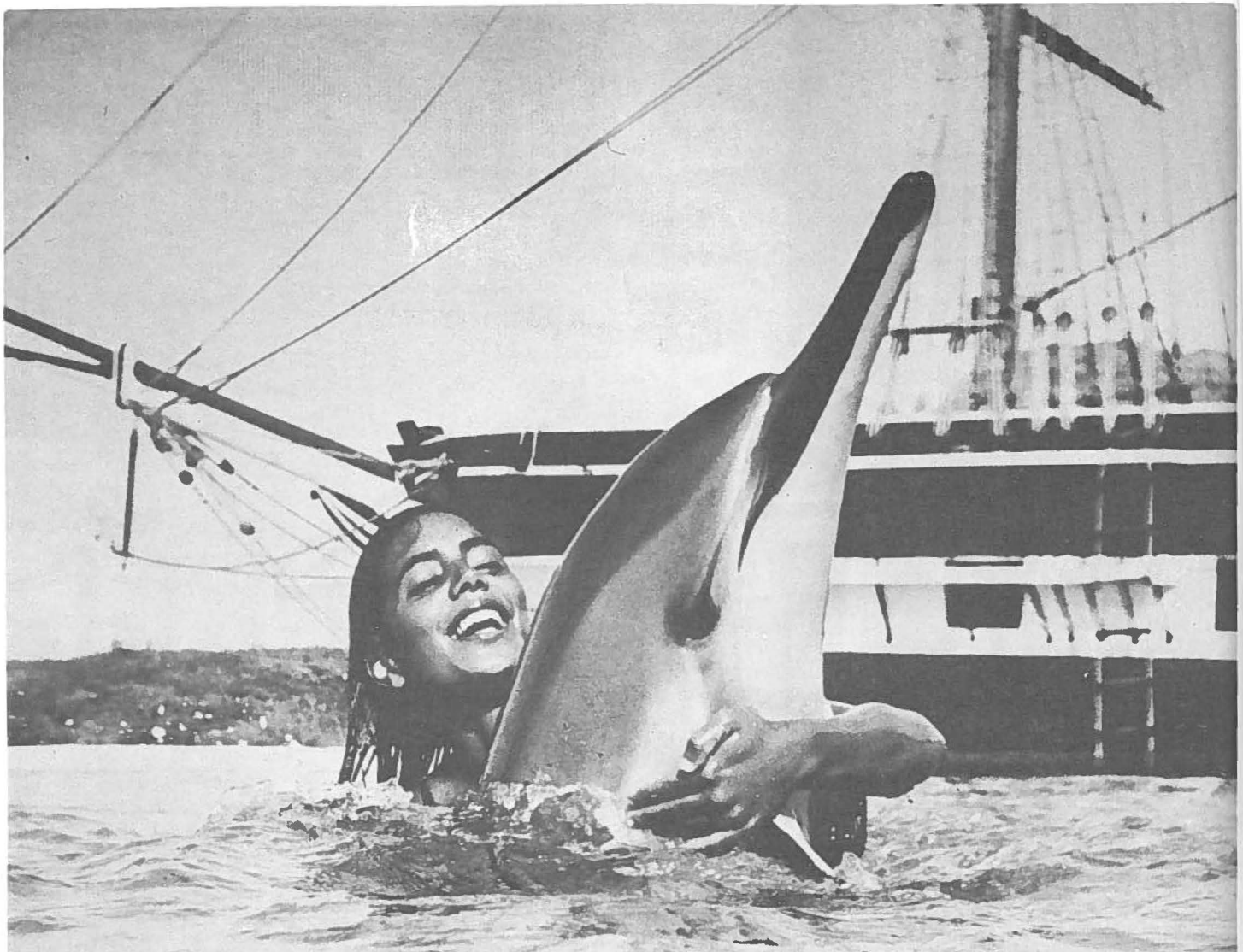
677 AHUA STREET • HONOLULU, HAWAII 96819

GENERAL ENGINEERING CONTRACTOR



EDWIN S. HULIHEE *President-Gen. Manager*

Ph. 839-9006



Porpoises, whales, and other marine animals star at Sea Life Park, Hawaii's largest marine exhibit. The Park is located at Makapuu Point, a half-hour drive from Honolulu.

An hour's drive away, on the western end of the Island, sits the resort development of Makaha. Radars of HANG's 169th Aircraft Control and Warning Squadron stand atop Mount Kaala, Oahu's highest peak overlooking Makaha. The beach is famous for its towering winter surf—waves with heights

of 30 feet during December and January. Makaha is the site of several international surfing meets each winter and is a year-round mecca of Hawaii's surfing community.

This then is Oahu, an island of variety. It includes Honolulu, with its multi-storied office and apartment buildings, as modern as any other city, and Waikiki.

with its spectrum of entertainment. But it also includes rural sections which abound in spectacular scenery, including the steep Koolau mountains in the Island's center, the Waianae Range along its western shore, sandy beaches and fields of sugar cane and pineapple, which Hawaii is famous for. Oahu puts it all together and lives up to its name, "The Gathering Place."

"Serving Hawaii Since 1920"

COMPLETE ROOFING SERVICE

**RESIDENTIAL
COMMERCIAL - INDUSTRIAL
REPAIRED • RECOVERED**

**HONOLULU
ROOFING COMPANY
LTD.**

Call 941-4451

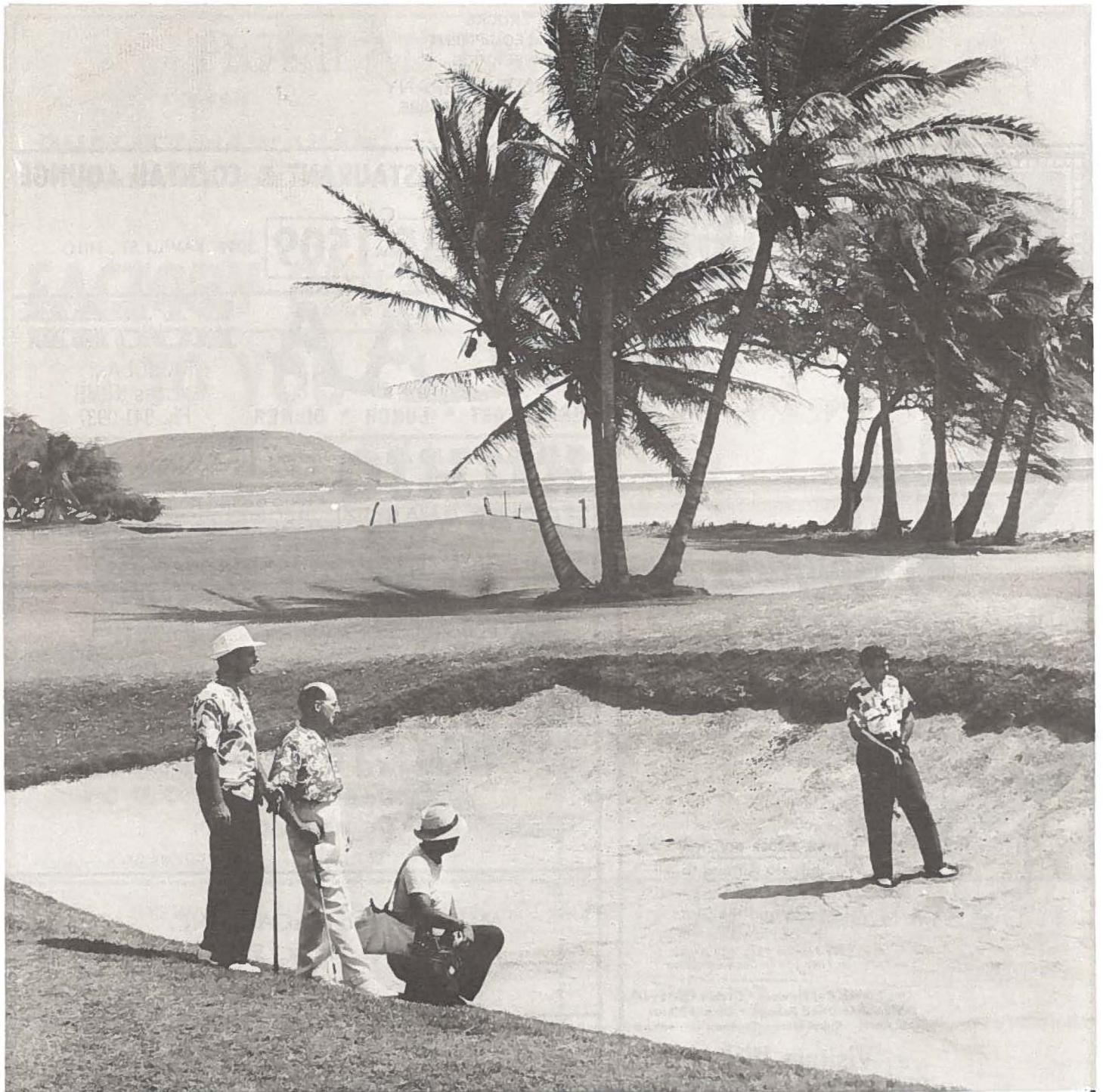
738 KAHEKA ST.
WAREHOUSE 749 MAPUNAPUNA ST.
839-0319
Branches: HILO & KONA, HAWAII - LIHUE,
KAUAI WAILUKU, MAUI - AGANA, GUAM

S. & M. Sakamoto, Inc.

3005 UALENA STREET

GENERAL CONTRACTORS

TELEPHONE 845-6621
HONOLULU, HAWAII 96819



Waialae Golf Course, on the edge of Waikiki, is one of Hawaii's many fine courses. All courses are open throughout the year.

BIGWAY BÜRGER

SPECIALIZING IN TERI-PLATES & SANDWICHES

PLATE LUNCHES
 SAIMIN
 BROASTED CHICKEN
 PHONE: 621-9331

ON THE CORNER OF
 KAM HIGHWAY & KILANI AVE.
 (IN THE BIGWAY SHOPPING CENTER)

DISCOVER THE DELIGHTS
 OF DINING AT THE

cavalier
 RESTAURANT



Validated Parking from 11:30 A.M. • Valet Parking from 6:00 P.M.
 Reservations PHONE 949 - 4134
 1600 KAPIOLANI BOULEVARD • IN THE PAN AM BUILDING

INTERNATIONAL TRUCKS
TRACTORS AND FARM EQUIPMENT
COMPLETE PARTS & SERVICE
HAWAIIAN EQUIPMENT COMPANY
660 E. LANIKAULA ST. - PH. 935-0885

Sumida's

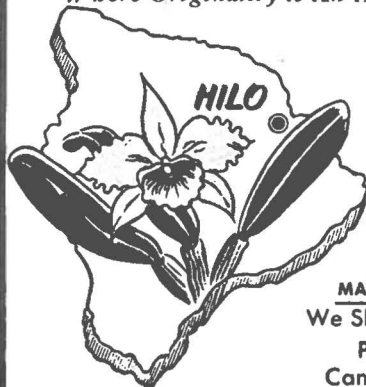
RESTAURANT & COCKTAIL LOUNGE

CALL
935-1509

399E KAWILI ST., HILO

Orchids of Hawaii.....

"Where Originality is An Art"



MAIL ORDER DIVISION
We Ship via Airmail to All
Parts of the U.S.,
Canada and the State
of Hawaii

*We Promise They Will Arrive
on Time and in Good Condition*

Leis • Fresh Cut Flowers • Orchid Corsages
Hawaiian Dried Foliage • Orchid Plants
Black Coral • Kukui Nuts • Souvenir Craft Items

Visitors Welcome

COURTEOUS GUIDES AT YOUR SERVICE
EXOTIC GARDENS • DISPLAYS • PACKING PLANT
MEMBER OF AMERICAN ORCHID SOCIETY
Cable Address: "HAWAORCH"

ORCHIDS OF HAWAII

575 HINANO ST., HILO, HAWAII - PH. 935-6617

BRANCH SHOPS

Coco Palms Hotel, Kauai Ph. Kauai: 855-5701
311 Royal Hawaiian Ave., Waikiki Ph. Hon.: 923-9611
Orchids of Hawaii, Japan Co. Ltd. Tokyo .. Ph. Japan: 743-0632

OLAA

BREAKFAST * LUNCH * DINNER

STEAK HOUSE

KAPIOLANI
across KGMB
Ph. 941-0937

KUHIO HOTEL/WAIKIKI

Where You'll Find the True Hawaiian Spirit
KUHIO DINING ROOM - WARRIOR BAR
MALUNA LOUNGE - TOP O' KUHIO
TARO PATCH COCKTAILS POI BOWL

2345 KUHIO AVE. PH. 922-2077

PH. 922-2077

VETERAN'S ELECTRIC CO., LTD.
ELECTRICAL CONTRACTORS
FLUORESCENT MAINTENANCE SERVICE



616 POHUKAINA STREET

LIC. No. C-380

PH. 538-7151



Residential Air Conditioning Company

"YOUR HOME AIR
CONDITIONING EXPERTS."

PH. 946-6777

2535 COYNE ST.

MURODA and ITAGAKI, INC.
1259 S. Beretania St. 531-5959

OAHU FARMERS, LTD.

Bldg. No. 2, 1020 Auahi St.
Fresh Grown Local Produce
Ph. 536-3445

SEKI'S ELECTRIC FORKLIFT SERVICE
Industrial Trucks and Equipment
Office Phone 622-4647
Radio Dispatch

GEORGE SEKIGAWA

1369 California Avenue
Wahiawa, Hawaii 96786

SNAPPY WHEEL ALIGNMENT & REPAIRS INC.
LESLIE FUJITA, PRES.
GENERAL AUTO REPAIRING

COR. PUIHALE & COLBURN STS.
HONOLULU, HAWAII 96819

Ph. 841-2141

HUKILAU FASHIONS

Presents

**QUALITY HAWAIIAN
CASUAL WEAR**

AT-
FACTORY PRICES
TO YOU

Welcome to our
DAILY FACTORY TOUR

Free pickup from your hotel

CALL US ANYTIME FROM 8:00 a.m. to 4:00 p.m.



Call 946-5161 • 946-5957

1558 Kona St., Honolulu, Hawaii 96814
NEXT TO ALA MOANA SHOPPING CENTER ON KONA ST.

WADE

REALTORS, LTD.
AIKAHI SHOPPING CNTR.
KAILUA, HAWAII 96734
254-3521 □ 261-5127

TinTin Chop Suey
1110-B Maunakea St.
Daily Fresh Manapua
Delicious Chinese Food
Open Daily 10 a.m. to 3 p.m.
531-2141 538-9130

**U.S. BUILDERS
★ CORPORATION ★**

PH. 847-6561

1336 DILLINGHAM BLVD. ★ HONOLULU, HAWAII 96817

UNIVERSAL EQUIPMENT

The largest rental construction equipment house in Hawaii

2829 Awaawaloa St.
Ph. 839-4577

Hilo, Hawaii
Ph. 935-8595

Kailua-Kona
Ph. 329-3138

STEWART-PACIFIC-ERICKSON

SEATTLE:
4242 22nd AVE. WEST
SEATTLE, WASHINGTON
PH. 283-4178

HAWAII:
P.O. BOX 2868
HONOLULU, HAWAII
PH. 847-4631

C. O. Yee Hop & Company

General Importers

PHONE 538-6951
P. O. BOX 1759

125 NO KING STREET

HOUSE OF LEE

91-902 Ft. Weaver Road
Ph. 689-0222

EWA BEACH BAKERY

Ewa Beach Shopping Center
Ph. 689-0180

Aloha & Welcome – National Guard Association

- ★ UPTOWN SERVICE ★
- ★ U-DRIVE SERVICE ★
- ★ FLAT RATE – BEST IN MAUI ★

Ph. 328-695 – 2085 Main St. – Wailuku, Maui

OVER 20 YEARS' EXPERIENCE

STATE LICENSE ABC-2771
BUILDING - ENGINEERING
SPECIALTIES (MASONRY)
COMMERCIAL - INDUSTRIAL - RESIDENTIAL
ALTERATIONS

FUKU CONSTRUCTION INC



"FOR ESTIMATES CALL"
FUKU CONSTRUCTION INC
1760 Mill 244-5581

The house that Sheraton built

A great hotel around, up-the-side-of and atop "Black Rock" on Kaanapali Beach on the island of Maui. There's something going on there all the time, from guys diving off with flaming torches to bikini-clad lovelies playing in the warm, crystal-clear Pacific to an 18 hole, championship golf course to music, gourmet dinners and lots of the good life. While you're on Maui, come for the fun of it.



Sheraton-Maui Hotel
SHERATON HOTELS AND MOTOR INNS. A WORLDWIDE SERVICE OF IIT



MAUI MEMORIAL PARK, INC.

P. O. BOX M
WAILUKU

Phone 244-5200

The Landing

Dinner: 5:30-9:30
Lunch: 11:30 a.m.-2:00 p.m.
• Cocktails

KAHULUI HARBOR

HAIR STYLING BY SHARON

AIR CONDITIONED **244-5466**

394 N. MARKET ST. - IN HAPPY VALLEY

MAUI AUTOMOTIVE DEALERS ASSN.

Haleakala Motors, Ltd.
Valley Isle Motors, Ltd.
Surf Motors
Island Dodge

Von Hamm Young Inc.
Volkswagen Maui, Inc.
Mog Supply Inc.

E. T. Ige Trucking, Inc.
250 Waiehu Rd.
Ph. 244-7957

L & F PLUMBING, INC.

1748 MILL STREET
WAILUKU, MAUI, HAWAII 96793
License No. C-H202

Louis Fernandez
Proprietor

Phone 244-5662

PHONE 877-0121



Sheik's

THE RESTAURANT

97 Wakea Ave

Kahului

MAUI PLANTERS' ASSOCIATION

MEMBERS:

HAWAIIAN COMMERCIAL & SUGAR CO. WAILUKU SUGAR COMPANY
PIONEER MILL CO., LTD.

POST OFFICE BOX 83
PUUNENE, HAWAII 96784

PHONE 877-5014

HAPPINESS HOMES
BY
ARISUMI BROTHERS, INC.

KAHULUI, MAUI

MAUI NEWS

Wailuku 244-3981
Lahaina Branch
Lahaina Shopping Cntr. 661-4233

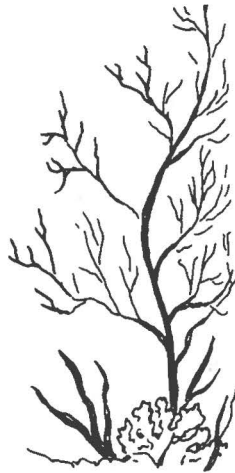
Tasty Crust Restaurant

Breakfast • Lunch • Dinner • Snacks
Open 5:30-12:00 p.m.
Ph. 244-0845
1770 MILL STREET

National Dollar Store
Wailuku, Maui

FREE FACTORY TOUR
See local craftsmen create jewelry from
**Hawaiian Black Coral
& Pink Coral**

• **SAVE — FACTORY PRICES**
1 Minute drive from Kahului Airport
on the road leading out . . . Watch for sign



**BLACK & PINK CORAL
FACTORY TOUR**

Free Kahului
hotel pickup **PH. 877-5411**

Maui **ELECTRIC
CO.**

**LIGHTS OUT AND
GENERAL TROUBLE
ALL HOURS
CALL**



MAUI ELECTRIC CO LTD
General Ofc 210 Kam Av.244-3975
Lights Out & Trouble-All Hours
Central Maui & Lahaina.244-5501
Hana Area Only.248-8465
Lanai Div Lanai.565-3145



Aloha Restaurant

PUUNENE AVENUE 877-6318 ★ 877-5885

Hukilau Resorts

THE WAIKIKI BILTMORE HOTEL HONOLULU 923-3272
2424 Kalakaua Avenue

Monkey Market

*Hawaii's Finest Craftsmen and Artisans
Specializing in the Excellent and Unusual*

**ROD BROWN
DEE PETERSON**

Phone 955-5844
1661 Kalakaua Avenue
Honolulu

S. McCabe Paving Co., Inc.

EXCAVATING • GRADING • PAVING
Coral Fill & Top Soil For Sale

MAPUNAPUNA STREET • HONOLULU, HAWAII 96819
PHONE: 839-5171

Putting it all together.



MUTUAL WELDING COMPANY, LTD.
Hawaii's largest steel fabricators
739 Ahua Street • Phone 839-4591 or 839-2431
License No. ABC 440

**FRESH
UP
WITH
7-UP!**



K. Takitani Enterprises (dba)

STAR ICE & SODA WORKS

Hawaiian Host Macadamia Nut Chocolate Candy



**PHONES: 244-3310
244-3218**

Supplier of
CANADA DRY MIX
Distributors of
**Foremost
Ice Cream**

Maui ... The Valley Isle

Home of the First Battalion

The Island of Maui, second largest in the Hawaiian chain, lies 25 minutes by air from Oahu. In the mid 1800s, Mark Twain wrote of a trip to the Island, "I have spent five weeks there, riding backwards and forwards among the plantations—looking up at the beautiful scenery and visiting the lofty crater of Haleakala. It has been a perfect jubilee to me in the way of pleasure. I have not written a single line, and have not once thought of business or care or human toil or trouble or sorrow or weariness. Few such months come in a lifetime."

Maui, "the Valley Isle," has changed as has everything else in the past century and a half, but much of the splendid scenery and certainly all of the rustic charm that Twain extolled still exists there today.

The "Valley Isle" derives its name from the valley-like isthmus between its two major mountain masses, Haleakala and Honolua. Haleakala (House of the Sun) is the world's largest dormant volcano. Its crater rim has a circumference of about 21 miles, and an observation point at the top provides a spectacular view of the sunrise. The crater is probably the Island's greatest scenic attraction. Small volcanic cones (the largest is taller than the Empire State Building) lie within the main crater. It also contains wooded areas, a small lake, meadows, and the Silversword, a plant found only in Hawaii. According to Hawaiian legend, the ancient demi-god Maui snared the sun as it sped by Haleakala and made it promise to move more slowly across the sky so that the Hawaiian people would have more hours of daylight.

The seat of the county's government is located in the town of Wailuku. The headquarters of HARNG's first battalion is located nearby in the Wailuku armory.

Scenic and historic Iao Valley is a ten-minute drive from the armory. The lush valley is all that remains of one of the Honolua volcanic craters. One of the most fierce battles in old Hawaii took place there when the troops of Kamehameha the Great pursued the army of Maui into the valley. Kamehameha caused such carnage, that the stream that runs through the valley floor was choked with bodies and "the river ran red with blood."

The Island is steeped in Hawaiian history, for during the mid 19th Century, it was the capital of the Island chain.

The seat of government was then located at historic Lahaina, and the town was the focal point for the booming whaling industry. Over 500 ships passed through the Lahaina Roads and anchored in the harbor to reprovision each year. The town attracted not only the boisterous sailors of the whaling ships, but also served as a base of operations for many of the New England missionaries who were to exert such a profound influence on early Hawaii and later to lead it toward annexation by the United States. Churches and a mission house built by the early congregationalists can still be seen today, although the royal cemetery at the Wainee Church is all that remains of Lahaina's role as the capital of the Hawaiian monarchy.

Other monuments to an earlier time are Lahainaluna High School, founded in 1831, and *Ka Lama Hawaii*, a newspaper started in 1834. Both were the first of their kind west of the Rocky Mountains.

Lahaina today is another satellite of the visitor industry. Whales still sound in the offshore waters, but 19th century sailors have been replaced with 20th century tourists. For several years, the

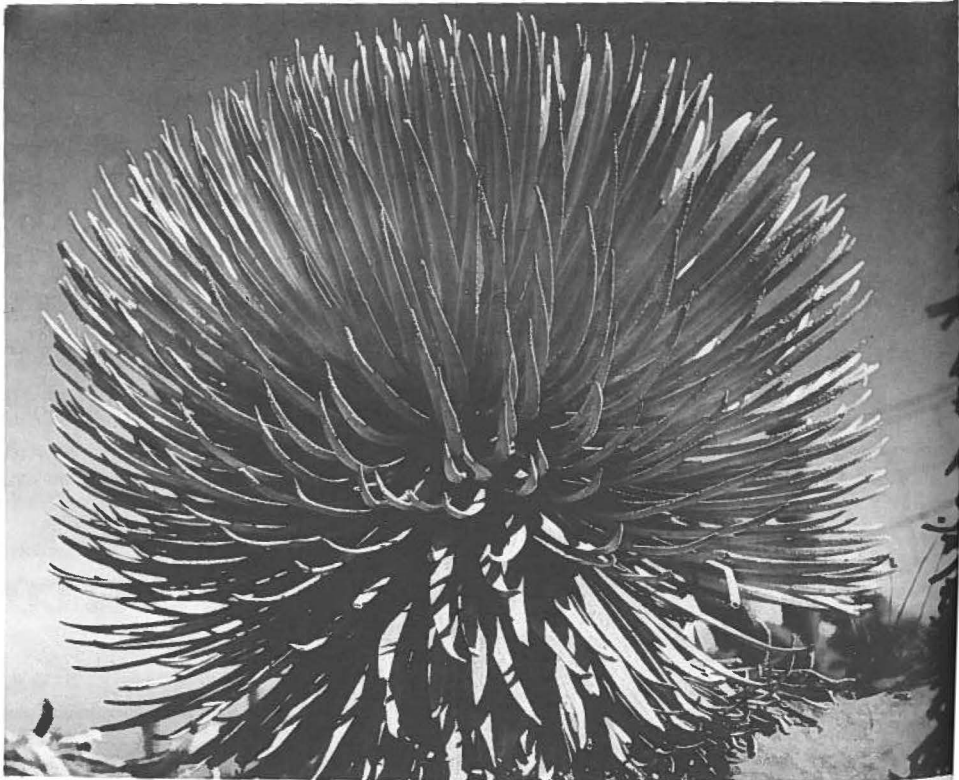
Lahaina Whaling Spree, a week-long celebration, has served to commemorate this picturesque period in Maui's history.

The Kaanapali resort area is just on the outskirts of the rustic town of Lahaina. A series of modern hotels borders one of the State's finest golf courses and overlooks one of the most inviting beaches on the Island.

The resort area at Kaanapali and the old whaling port of Lahaina are connected by 12 miles of track that belong to the Lahaina Kaanapali & Pacific Rail Road, a new tourist attraction which recreates turn-of-the-century railroading in Hawaii. The 36-inch gauge railroad is a restoration of the type that hauled sugar cane and passengers along the coast during the late 1800s and early 1900s. Its Kalakaua vintage coaches carry 164 tourists on each trip between the Kaanapali roundhouse and the Lahaina Depot, not far from HARNG's Lahaina armory.

Across the Island from Kaanapali lies Hana, a resort area of a different sort. Hana is a quiet spot, with a pace reminiscent of an earlier time in Hawaii. Outdoor activities predominate there—horseback riding, swimming, hiking, sailing, golf, and tennis. Instead of cabaret entertainment, Hana offers picnics and hayrides for vacationers on Maui. Small wonder that Hana is a favorite of many national and international dignitaries who just "want to get away from it all."

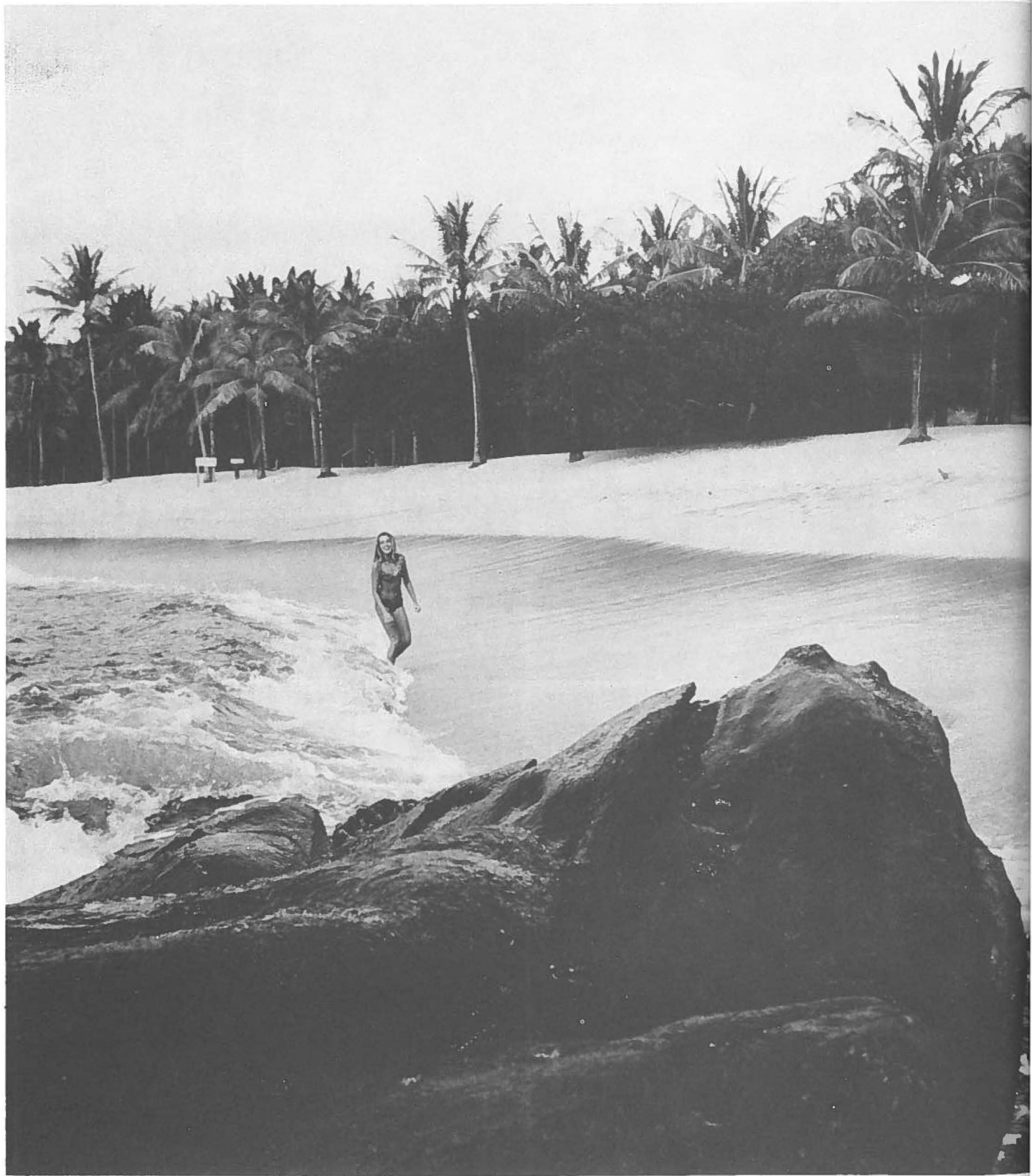
Certainly, the "Valley Isle," the first battalion's island, has much to offer to anyone who seeks a quieter, more nostalgic way of life.



Haleakala's silversword plant is found only in Hawaii.



The Seven Sacred Pools in the Hana area were once restricted to royalty.



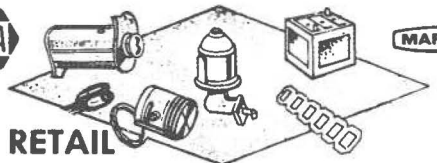
Fleming's Beach on Maui is one of the State's many outstanding swimming areas.

UNITED AUTO PARTS

A Complete Line of Auto Parts & Accessories
FOR ALL MAKES & MODELS
INCLUDING FOREIGN CAR PARTS

1820 WELLS ST., WAILUKU

MACHINE SHOP SERVICE **244-3774**



MARK IX

WHOLESALE RETAIL





COMPLETE BANKING SERVICE

MEMBER FEDERAL DEPOSIT
INSURANCE CORPORATION

Night Banking *Only* at AMERICAN SECURITY

HOME OFFICE CALL 923-2011

DOWNTOWN: 2 N. KING ST.....	537-1911
KAIMUKI: 3601 WAIALAE AVE.....	734-0218
KALIHI: 1803 N. KING ST.....	845-6427
KANEHOE: 45-1054 KAM HWY.....	247-0466
KAPAHULU: 885 KAPAHULU AVE.....	732-0756
LILIHA: 1420 LILIHA ST.....	537-9927
MAKIKI: 1108 KEEAUMOKU ST.....	536-6171
WAIKIKI: 2270 KALAKAUA AVE.....	923-2011
WAIAPAHU: 94-420 FARRINGTON HWY.....	677-5614

HOME OFFICE: 2270 KALAKAUA AVE.

**GUARDSMEN!
BUY 50% OFF RETAIL
DIAMONDS·WATCHES·GEMS**

IF YOU ARE NOT BUYING FROM ADLER,
YOU ARE PAYING TOO MUCH. HOUSE
OF ADLER DIAMONDS ARE SOLD WITH
A CERTIFICATE OF GUARANTEE AND
TRADE-IN PRIVILEGES.

House of Adler, INC.

Suite 919 • 1600 Kapiolani Blvd. • Honolulu, Hawaii
Telephone: 949-4196

A NEW CONCEPT IN GALLERIES

ARTIQUES

* CONTINENTAL ART IMPORTS, LTD. *

Featuring . . .

- ORIGINAL EUROPEAN OIL PAINTINGS
- NEW EXCITING LOCAL ART WORKS
- POTTERY AND CERAMICS
- FINE ORIGINAL ART AT THE LOWEST PRICES OFFERED IN HAWAII—FROM \$15.00 to \$125.00.

FRAMES AND FRAMING AVAILABLE

PETER T. McGOVERN, PRES.

* 478 ENA ROAD
KALAKAUA END OF ENA ROAD

OPEN 9 A.M.—6 P.M. MON. SATURDAY
PHONE 955-5950

A 25% discount will be given to all Guard delegates upon presentation of this ad.

**Chinese Carved
Furniture**

Carved Bars & Chests
Camphor scented woods
Decorative chairs
and Desks

**Treasured
Jewelry**

-Jades -Sapphires
-Opals -Amethysts



-Zircons -Aquamarine
in unusual gold
settings, priced
from \$



Teakwood bar deep carved

WE SPECIALIZE IN MAIL ORDERS

Factory delivery of orient's finest
artistically hand carved teakwood and
rosewood chests -plaques -cocktail
bars -coffee tables -screens -desks and
other styles of furniture.

Contact Us For Details.

M's oriental imports

Located in the Sheraton-Waikiki
near the Poolside Bar

J & M

**Contractors,
Inc.**

485 WAIALE DRIVE PHONE: 244-3767

P. O. BOX 1129

• WAILUKU, MAUI, HAWAII •



HOWARD ODA

Grand Pacific Life Insurance
Co., Ltd.

WAIPAHU BICYCLE & SPORTING GOODS

Schwinn Bicycles
Toro Lawn Mowers
Mitchell-Garcia Rod & Reel
TELEPHONES 6773-611 Winchester 94-320 DEPOT STREET
AC 808 6775-011 Remington WAIPAHU, HAWAII 96797

AUTHORIZED *Wasano* **Kirby** Co.

Kirby
Classic FREE: Instruction
FACTORY Carpet Cleaning Care 1311-5 North King St.
DISTRIBUTOR Maintenance Ph. 847-0209

ALOHA GUARDSMEN
FROM
TROPICAL PAINTING, INC.

2155-B Puowaina Dr.
Ph. 536-8545

Hawaiian Handcrafts
Exquisitely Hand-Carved in Hilo
760 Kilauea St. Ph. 935-5587
Mon.-Fri.: 8:30 a.m.-9:00 p.m. Sat.: 8:30-6:00 p.m.

U-DRIVE Plus \$1.50 Mandatory —PHONE 877-6815—
MDG insurance. NO MI- Late models—all pric-
\$7.00 FLAT RATE LEAGE CHARGE es plus 4 tax.

**American
President
Lines**



"Some day I'd like to take an ocean voyage."

WHY NOT TO THE ORIENT?

Ships of U.S. Registry

Phone: 548-2940

For free brochures and further
information, see your favorite
travel agent or contact:
Castle & Cooke, general agents
for American President Lines.

ISEMOTO CONTRACTING CO. LTD.

648 PIILANI — PHONE 935-7194
HONOKAA — PHONE 775-0144
SHOP 484 KANOELEHUA AVE. — PHONE 935-3102
HILO, HAWAII

**REPUBLIC STEEL DOORS FRAMES &
WINDOWS**

IMMEDIATE DELIVERY
STANDARD SIZES
Larger Jobs - Fast Delivery
West Coast Warehouse
Exclusive Distr. for Wilkinson
Chutes - Bilco Roof Scuttles
and other building specialties



"FOR INFORMATION CALL"
FRANCHISED DEALER-
DISTRIBUTOR

YAMASHIRO JIMMY INC
1711 Silva847-3751

Stop & Shop Market

3368 Campbell Ave. 737-2525
Honolulu, Hawaii



Pacific Design PHONE: 531-7077

Drapery - Bedspread - Carpet - Home Furnishing
Residential - Commercial
FREE ESTIMATES

GEORGE KANESHIRO
(TSgt 154 CAM SQ. HANG)
NORMA TAKEHITA

1020 AUAHI STREET
HONOLULU, HAWAII 96814

*Next Chowtime
use Chopsticks.*

**PAGODA
HOTEL**
& FLOATING RESTAURANT

For reservations call 941-6611.
Late-late dining to 3 am weekends.
Japanese & American cuisine.
1525 Rycroft Street • Honolulu

Sida Taxi & Tours 525 John Rodgers Rd. Phone: 923-1551	Lucky Barber Shop 3086 Waialae Ave. Ted K. Nonaka—Professional Barber Ph. 732-3355	PRECISION RADIO, LTD. 1160 S. King St. Ph. 537-5291
Ed's Refinishing EDWIN KAMIOKA Phone: 536-5171	M. T. Equipment Rentals 24-Hours Service—7 Days a Week 4050F Keanu St. Ph. 737-7107	Richard's Upholstery 3229 Koapaka Ph. 841-4638
HAWAIIAN REINFORCING STEEL CO., LTD. 761 Ahua Street	<i>Maunawili Produce</i> 914 KAAHAI PLACE PHONE 847-1558	Ricky's Service 437 Koula 533-2933 Honolulu, Hawaii
HawaiiPrint—G. Von Hamm Textiles Hawaii's Kamaaina Printer 916 Kaahai Place Ph. 847-4411	Mel's Market 41-1029 Kalaniana'ole Hwy. 259-7550 Waimanalo	<i>Rural Tractors Service Co.</i> PHONE 621-5479 543-A CALIFORNIA AVENUE
HONOLULU POI CO., LTD. 1603 REPUBLICAN STREET Phone 841-6203	MIDPAC LUMBER CO., LTD. 1001 AHUA STREET TELEPHONE 839-9311	Sagara Tamayo 67-173 Farrington Hwy. Phone: 637-4825
HOUSE of KALAI ROYAL HAWAIIAN HOTEL PHONE 923-6119	MILES SONS SCALE SERVICE 47-458 Hoopala Ph. 239-8181	CHANG SCALE SERVICE 3387 Waialae Ave. Ph. 737-1868
Imperial Construction, Inc. 254 Mokauea Ph. 847-1544	Min Plastics & Supply Center "Distributors of Plexiglass" 921 Kaamahu Place Ph. 847-1511	Skips Golf Shop Kahuku—Skip Nedlin Golf Pro. Ph. 293-5846
Ralph S. Inouye Co., Ltd. General Contractors 2831B Awaawaloa St. Ph. 839-9002	Moonglow Lounge Westgate Shopping Center 671-7460 Waipahu, Hawaii	SUN-RAY MARKET 3158 Monsarrat Avenue 737-4741 Honolulu, Hawaii
JBL Hawaii, Ltd. Ph. 847-4653 531 WAIKAMILO RD.	Mutt's Body & Fender Shop 815 Kawaiahao St. Ph. 533-7143	Earl Thacker 2222 Kalakaua Ave. Phone: 923-7666 Suite 1415
Joe's Fixit Shop 45-552, C-3, KAM HWY. PHONE 247-4048 Lic. # C-1287	New Ann's Coffee Shop In the Heart of Pearl City—Serving American & Chinese Dishes 98-719 Kam Hwy. Ph. 455-9122	Trader Hall's On Hwy. 83—Just Beyond Kaneohe Town Gifts—Souvenirs—Free Rainbow Punch
JUMBO'S DRIVE INN 1052 Ahua St. 839-7425	OKAZAKI & SUGAI PLASTERING, INC. 730 Umi St. 847-1171	J.M. Urner Realtors Suite 338, 210 Ward Ave. Phone: 521-2985
K&Y Service 571 Queen St. Ph. 538-1977	Art Omine Auto Service 581 Dillingham Blvd. Ph. 847-2257	Wahiawa Shopping Center 823 California Ave. 622-4125
KAIMUKI DRY GOODS SIMPLICITY - McCALL'S - VOGUE BUTTERICK & POLYNESIAN PATTERNS Across from Queen Theater 3589 Waialae Av. 734-2141	PACIFIC CONTRACTING & SALES 94-260 Pupule Street Office Phone 671-7338	Waipahu Theatre 94-897 Waipahu St. Ph. 677-3462
Kaimuki Plumbing Co., Ltd. 3464 Waialae Ave. Ph. 395-9459	Nick Pao & Associates 21 Kainehe St. Phone: 262-6534	Watercress of Hawaii, Inc. P.O. Box 267 488-5433
KAMIBAYASHI ELECTRICAL WORKS 1150 SOUTH KING STREET ROOM 907	Paradise Upholstery Inc. 1363 Dillingham Blvd. Phone: 841-3341	White Truck Sales—Hawaii 2100 N. Nimitz Hwy. Ph. 847-0276
Ken's Bakery 41-865 Kalaniana'ole Hwy. 259-9084 Waimanalo, Hawaii	PAT'S at PUNALUU 53-567 Kam Hwy. 293-9235	Whittet Roofing & Maintenance Phone: 261-0170 Above all a good roof.
KOOLIANA Phone: (808) 841-8731 1804 Hart Street	Paul's Pastry & Coffee Shop Moanalua Shopping Center Phone: 422-7611	Wholesale Motors, Inc. 2999 N. Nimitz 845-6661
Kuulei Delicatessen 418 Kuulei Rd.—Kailua Ph. 261-5321	Pearl City Florist, Inc. 797 Kam Hwy. Ph. 455-2012	M. F. Williams, Inc. General Contractor 94-252 Pupule St. Ph. 677-9131
Lei Flowers 904 Maunakea St. Ph. 533-7061 Carnation Leis Except Graduation	Peerless Roofing Co., Ltd. 2629 Waiwai Loop Honolulu, Hawaii 847-1906	WINDWARD FURNITURE SHOP 2814 Kili Hau St. Ph. 893-039
Lin Fong Company Chinese Candy & Pastries 1037 Maunakea St. Ph. 538-6644	Peppino Italian Food 23 Hoolai Street 262-5833 Kailua, Hawaii	WORLDWIDE MOVING AND STORAGE, INC. 2722 KILIHAI STREET Phone 841-4655

ALL OF US IN HAWAII'S

FASTEST GROWING LIFE

INSURANCE FIRM EXTEND

WARMEST ALOHA TO THE

U. S. NATIONAL GUARD!



Wadsworth Yee
President



**GRAND
PACIFIC**

LIFE INSURANCE COMPANY, LIMITED
King & Alakea Streets / Honolulu
Telephone: 531-3751

"THE BIG G STANDS FOR GROWTH"

ALOHA NATIONAL

GUARD

SEE YOUR ARRIVAL AND LUAU

PICTURES IN OUR SHOP

SPECIALIZING IN:

- * CAMERAS
- * FILM
- * GIFTS
- * SOUVENIRS
- * OLIVINE JEWELRY
- * STATIONARY
- * RADIOS
- * TAPE RECORDERS

HOTEL EXTENSION NUMBER: 72376

SHOP NUMBER: 949-6644

I S L A N D C A M E R A
A N D G I F T S H O P

SHERATON WAIKIKI

Karen's YAKI NIKU HOUSE

SPECIALIZING IN YAKI-NIKU

Exclusive in Hawaii

Come visit us for a unique dining experience.
JAPANESE/AMERICAN FOOD

**1485 KAPIOLANI BLVD.
PHONE 949-5441**

OPEN 7 DAYS A WEEK

11:00 a.m. to 2 p.m. — LUNCH

4:00 p.m. to 9 p.m. - Dinner

4:00 p.m. to 10:00 p.m. - Friday and Saturday

WILLIAM'S MORTUARY

LIMITED

SERVICE MEASURED NOT BY GOLD

BUT BY THE GOLDEN RULE



Established 1859

1076 South Beretania Street

Telephone 537-2587

Tropical Traveler

For graceful relaxing, this
Pareu print culotte is as pretty
as it is
practical
and
perfectly
packable



In lovely pastels to
afford high fashion
comfort
Sizes 6 - 18

ALFRED
Shakeen
HAWAII

Reef Hotel Lobby Shop 923-7295	Hawaiian Village Hotel Store 946-6494	Waikiki Store 2252 Kalakaua 923-3477
--------------------------------------	---	--

Shakey's PIZZA PARLOR & Ye Public House



"The Family Fun Place
With the Pizza Party Room"

**21 DIFFERENT KINDS
OF DELICIOUS PIZZA!**

Spicy - ROBUST - Exotic

Made with 7 different kinds of imported
cheeses and SHAKEY'S own secret sauce
with 37 different kinds of herbs, oils and
spices — You'll love it!

Italian Cheeses Blended &
Baked to Perfection
SHAKEY'S HOURS

Monday through Thursday 11:00 A.M. to 1 A.M.

Friday & Saturday 11:00 A.M. to 2 A.M.

Sundays 11:00 A.M. to Midnite

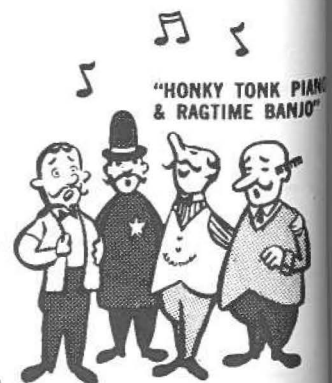
FOR YOUR PICK-UP ORDERS CALL

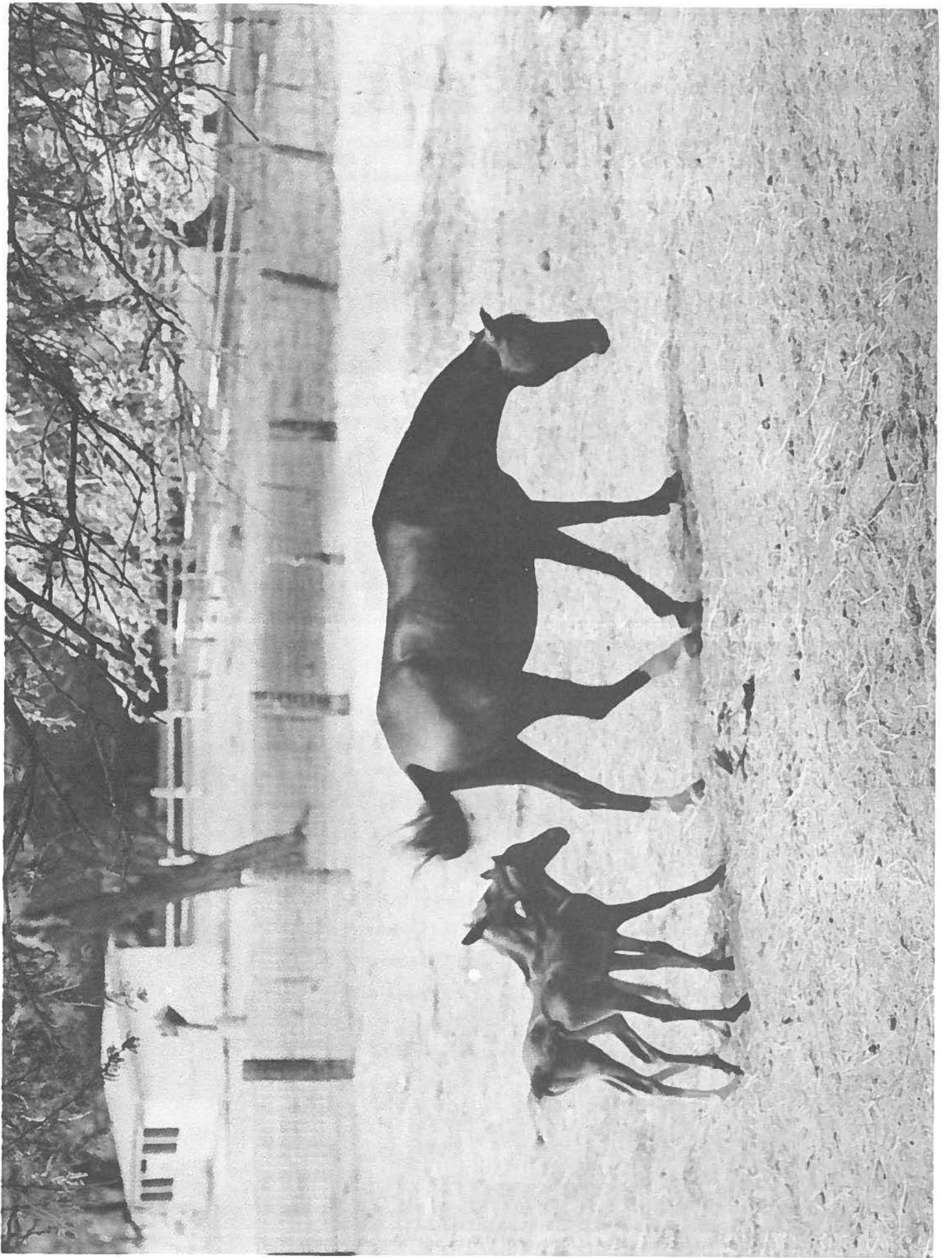
488-1902

98-147 Kam Hwy. Near Aiea
Opposite the Watercress Farm

247-0405
45-1151 Kam Highway
Kaneohe

946-2821
885 Koaumoku St.





Hawaii The Big Island

Home of the Second Battalion

By Sp4 Judd Hambrick



Snow covered cinder cones can be seen on 13,796 foot-high Mauna Kea on Hawaii.



Tikis, idols of old Hawaii, stand at the City of Refuge near Kealakekua Bay on the island of Hawaii.

The Island of Hawaii, the "Big Island," or the "Orchid Isle," probably has the most interesting history of all the Islands, and was once the home of their greatest King. History books about Hawaii usually begin with the reign of Kamehameha the Great, "The Lonely One," who was born there and who lived from 1758 to 1819. Kamehameha is the hero of the Hawaiian people for it was he who first united the Islands under one ruler, a rule strong enough to keep Hawaii independent during the crucial years between 1778 and 1820 when the Islands were first opened to the traders and explorers from Europe and America. It is said that he became king by lifting an enormous stone, called the Naha stone, which now rests in front of the Hilo county library. He was born in Kohala, Hawaii, and he died in 1819 in Kona. No one knows where he was buried, although legend has it that the king was buried with great treasures, and although many have searched, none have found his burial site. Its location remains a mystery of the "Orchid Isle."

The Island has an area of 4,038 square miles, almost twice the size of all the other Islands in the state combined. Its principal industries are sugar growing, cattle ranching, tourism, and diversified agriculture. It is also the home of the only coffee industry in the United States and the largest orchid growing industry in the world. Because of its large size and relatively small population, the "Big Island" has room to grow. Its resident population is roughly 70,000 and almost 45 percent of those people live in Hilo.

Hawaii is 93 miles in length. Its

greatest width is 76 miles, and the Island is located 216 miles from Honolulu.

The "Orchid Isle" was formed by five volcanoes. Two of them are still active and periodically add to the Island's size.

By far the most active volcano at this time is Kilauea. It has been erupting for over a year and has caused several lava flows. Its most destructive recent eruption, however, was in 1960, when it completely wiped out the town of Kapoho. Fortunately, no deaths were caused by the eruption. Units of the 29th Brigade's Second Battalion, headquartered in Hilo, were called to assist the community during the catastrophe.

The Kilauea fire pit is called Halemau-mau. A paved road from Hilo to Kilauea winds through towering fern forests to a unique 4,000 foot-high plateau that resembles the surface of the moon. The resemblance is so striking that NASA has used the area to accustom astronauts to lunar terrain.

Kilauea's most famous eruption occurred in 1790 when the Hawaiian king, Keoua, was leading his army across the plateau to Kau. The explosion that day killed a portion of Keoua's army.

Mauna Loa, the other active volcano, is the largest single mountain mass on earth, rising 13,680 feet above sea level. It erupted for 23 days in 1952 and its lava flows destroyed several homes, a post office, and other buildings. The eruption was the largest in recent history in terms of the amount of lava produced. Mauna Loa is thought to use the same source of lava that feeds Kilauea.

Mauna Kea is a dormant volcano that sits next to Mauna Loa. It is the highest

island peak in the world. Its summit rises 13,784 feet above sea level, but its base lies 18,600 feet below the waves on the ocean's floor. So, the entire peak measures more than 32,000 feet from the ocean floor to its top. Mauna Kea's peak is covered with snow during the winter months and offers skiing for those who are willing to venture into the area.

Hualalai is another dormant volcano that rises over 8,000 feet above sea level. It last erupted in 1801. The flows of this volcano are noteworthy for they contain a number of jewel-like crystals in the lava.

The Kohala Mountains were formed by a now extinct and very old volcano, older even, than Mauna Kea. The mountains are 21 miles long and 13 miles wide. The main crater, which has since been filled in by small lava flows, was 2 miles wide and 3 miles long.

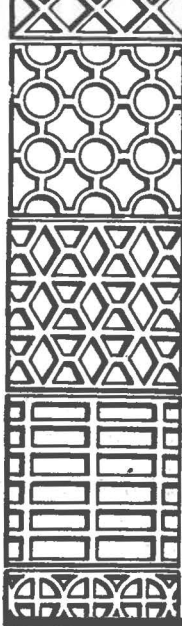
The Island of Hawaii is often thought of in terms of two geographic sections—the Kona Coast on the western side, and the Hilo or Hamakua Coast on the eastern side.

The Kona Coast is most easily reached by air. Both inter-island airlines fly into the new Kailua-Kona airport, located in the midst of a lava field. The airport, newer and larger than Honolulu International, recently won an award for excellence from the Federal Aviation Agency. The field serves the town of Kailua-Kona, one of the major satellite resort areas in the State's booming visitor industry.

The waters off Kona offer some of the world's best big gamefishing, and have yielded many record-setting marlin. Each year the international billfish tournament is held there.

GLOVER

LTD.



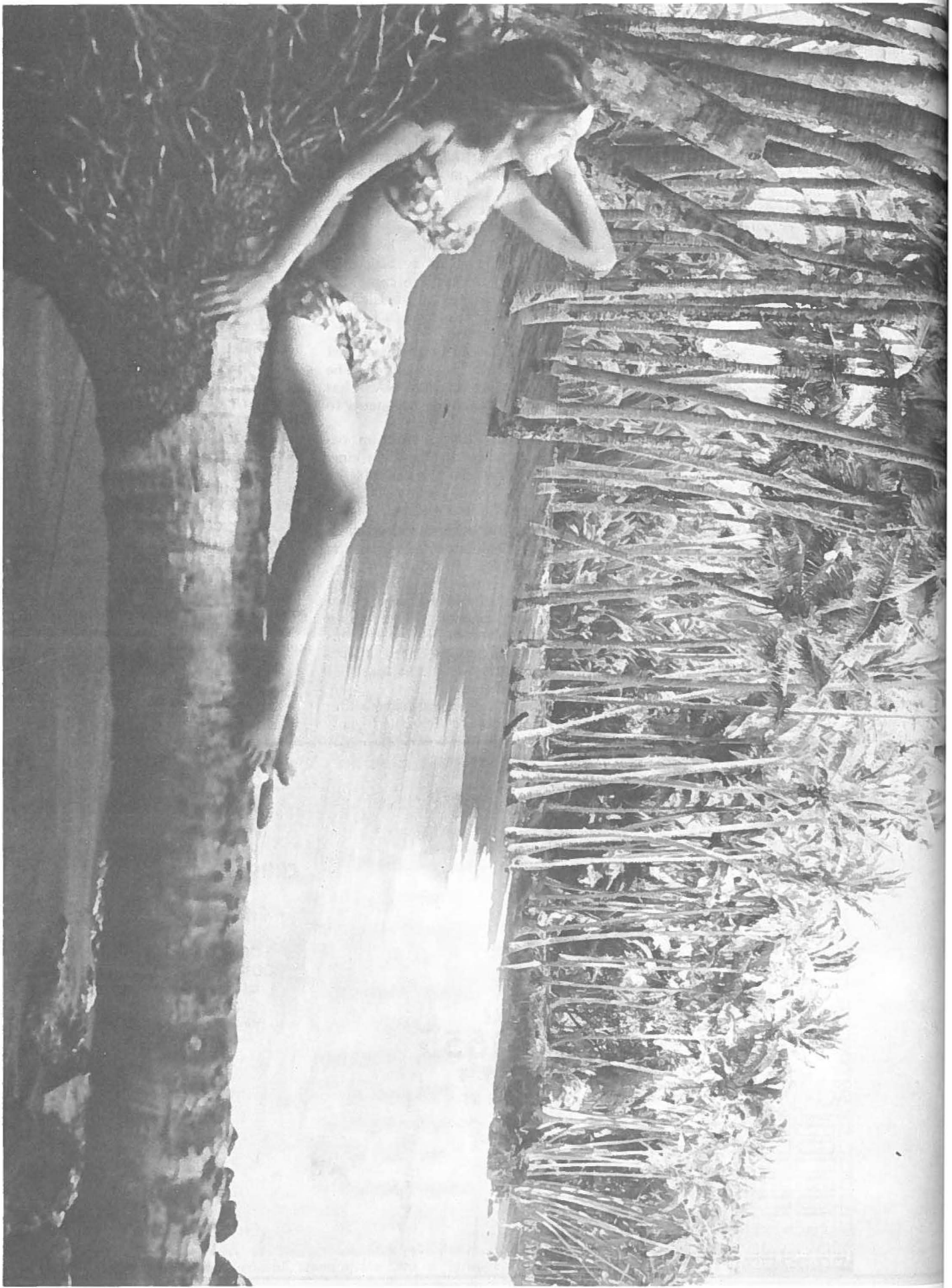
CALL
935-1555

935-8904
LEILANI ST.

**CRUSHED AGGREGATES
BLUE ROCK
CINDER & CORAL**

**COMPLETE LINE OF
CONCRETE PRODUCTS**

**READY-MIX CONCRETE
CONCRETE BLOCK
PRE-STRESSED CONCRETE
PRE-CAST CONCRETE**





Historic Kealahou Bay lies just south of Kona. The area was visited by British captain, James Cook, the explorer's explorer in 1779 and was the scene of his death in February of that year.

The southern end of the bay is the site of a restored Hawaiian city of refuge, a monument to long-past Polynesian wars and an ancient tradition of sanctuary.

The sanctuary was administered by kahunas (priests) of old Hawaii, and it offered a haven for women, children, and the aged during ancient Hawaiian battles. The area, with its high rock wall and heiau (temple) was restored a few years ago and is now a National Historical park.

A short drive away, in contrast to the pagan heiau, sits Saint Peter's Catholic Church—known as the blue church or the painted church. The church is a small one, typical of those built by the early missionaries about 150 years ago. It is unique because of the murals which decorate its interior walls and ceiling.

The Hamakua coast on the opposite side of the Island can also be reached by air. Hilo Airport, the State's second overseas air-terminal, serves the Island's capital city with inter-island flights as well as overseas flights which originate on the west coast of the continental United States.

The northern end of the Hamakua coastline is dominated by the Parker Ranch, the second largest cattle ranch in the country. Another satellite resort area, the Mauna Kea Beach complex, lies nearby in the shadow of Mauna Kea. Its verdant golf courses are a tribute to modern engineering as they sprawl next to arid lava flows.

The rest of the Hamakua coast boasts a series of parks which span a spectrum of scenery from tropical jungle which surrounds Akaka Falls to black sand beaches at Kalapana, to desert terrain located south of Volcanoes National Park.

The list of interesting spots on the "Big Island" is endless. In fact, the home of the Second Battalion might fittingly be called the "Variety Island."

SHOPPING CENTER FOR THE TRUCKING INDUSTRY

Autocar

**WHITE
TRUCKS**

**WHITE
FREIGHTLINER**

TRUCK & TRAILER SERVICE, INC.

40 HOLOMUA ST. HILO, HAWAII

PHONE 935-2904

ENDO PAINTING SERVICE, INC.

No. 2 Beach Road *Kahului, Maui*
Phone: 244-9139

Tex Drive Inn
Honokaa, Hawaii
Ph. 775-0598

M. SONOMURA CONTRACTING CO.
100 KUKILA ST. HILO, HAWAII

FOODFAIR SUPER MARKET

1990 KINOOLE ST. — PH. 959-9126
194 KILAUEA AVE. — PH. 935-0882

CAFE 100

969 Kilauea Ave.
Ph. 935-8683



Fine Beef and Sausage Products
by
HILO MEAT COMPANY, LIMITED
Makers of the Famous
Scottish Bangers
Available on all Islands

db **curuhara's**

Hilo Shopping Center-Phone: 935-2838
Downtown Hilo-194 Kam Hwy' Phone: 935-8973

DE LIMA'S

NEW CONSTRUCTION
SPECIALISTS

RESIDENTIAL • APARTMENTS
• HOTELS

Since 1956

LIC. # C-651



INC.

ISLAND
WIDE
SERVICE

CALL
935-8806

875 E KANOELEHUA AVE., HILO

WE MEET ALL INCOMING FLIGHTS
Hilo & Kona

Use It as Your Own

BY THE HOUR, DAY OR WEEK
New Chevrolets - Datsuns - Toyota - Chevy II's
Cars May Be Left at Hilo or Kona Airports.
We Honor All Major Credit Cards.

Free Gas & Oil

All Island U-Drive Arrangements Available

HILO
935-1936

KONA
329-1730

AFTER
HOURS
CALL 935-2598

AFTER
HOURS
CALL 329-3363

Phillips' U-Drive

1690 KAMEHAMEHA AVE.
Offices in Hilo (Town & Airport) & Kona

Orchids of Hawaii...

INTER-ISLAND HEADQUARTERS - P.O. Box 457, HILO, HAWAII
575 HINANO ST., HILO, HAWAII CALL 935-6617

BRANCH SHOPS & OFFICES

Coco Palms Hotel, Kauai.....Call Kauai 822-5101
311 Royal Hawn Ave., Waikiki.....Call Honolulu 923-9611
Orchids of Hawaii Japan Co. Ltd., Tokyo .Call Japan 743-0632

"Where Originality is An Art"



MAIL ORDER DIVISION

We Ship via Airmail to All
Parts of the U.S.,
Canada and the State
of Hawaii

We Promise They Will Arrive
on Time and in Good Condition

Leis • Fresh Cut Flowers • Orchid Corsages
Hawaiian Dried Foliage • Orchid Plants
Black Coral • Kukui Nuts • Souvenir Craft Items

Visitors Welcome

COURTEOUS GUIDES AT YOUR SERVICE
EXOTIC GARDENS • DISPLAYS • PACKING PLANT
MEMBER OF AMERICAN ORCHID SOCIETY
Cable Address: "HAWAORCH"

HAWAII PLANING MILL, LTD.
LUMBER AND BUILDING MATERIAL
P.O. Box 337 • Hilo, Hawaii 96720 • (808) 935-0875

OSHIRO CONTRACTING

807 LEILANI AVE.
PH. 935-8761

BEN FRANKLIN STORES
HILO - PH. 935-0005
KAMUELA - PH. 885-7376
KAMUELA KASUALS - PH. 885-4223
KONA - PH. 323-2685
KONA HARDWARE - PH. 323-3127
STYLE CENTER KAINALIU - PH. 323-3198

SUGAR.....THE BIG ISLANDS
LARGEST INDUSTRY
HAWAII ISLAND PLANTERS' ASSOCIATION

HILO, HAWAII

Hukilau Hotel - Hilo

33 S. Banyan Dr.

Ph. 935-0821

Hukilau Kona Hotel

Kailua, Kona

Ph. 329-1655

J & H Supply Co. Inc.
109 Holomua St.
Ph. 935-3711

AIRWAYS
RENT-A-CAR PH.

MAUI:

Call for FREE AIRPORT PICK-UP

FLAT RATES — 2 DAY MIN.

\$9⁷⁵ UP

Choose from 14 New Models
and Styles

• **DATSUNS, PINTOS** and all size **Fords**
IN KIHEI: PH. 879-2825

HILO ELECTRIC LIGHT CO. LTD.

MAIN OFFICE AND ALL DEPTS. HILO
1200 KILAUEA AVE. — PH. 935-1171
KAMUELA BRANCH — PH. 885-4605
KONA — PH. 329-3584

COMPLETE AUTO GLASS REPAIR
DOOR REGULATORS • LOCKS, MECHANISMS

Associated Auto Glass

1137 Hopaka St.
Phone: 537-5455

Maui Publishing
Wailuku, Maui
Ph. 244,3981



By Sp4 Judd Hambrick

The most isolated island in the Hawaiian chain is Kauai. Noted for its remote valleys cloaked in jungle and sprayed with colorful flowers, Kauai is a place for total relaxation. Because of its distance from the rest of the chain, the island had retained much of its original Polynesian culture. The island was once the home of Hawaii royalty. Many words used there still contain traces of Tahitian pronunciation.

Kauai is known as the "Garden Isle." It's the oldest and northern-most of the Hawaiian Islands—located 95 miles from Oahu across a channel virtually impossible to cross in an outrigger canoe but easily spanned in 25 minutes by air.

The island is the fourth largest in the Hawaiian chain. Near its center is an ancient volcano, Mount Waialeale. It was from the eruptions of this volcano many millions of years ago that Kauai was formed. However, the 5,080 foot-peak of Mount Waialeale is anything but hot now. It's perennially banked in clouds and gets nearly 500 inches of rain a year, making it the wettest spot on earth. The run-off from these tremendous rains has cut deep gorges into the mountain's slopes right down to the sea.

And speaking of gorges, the deepest and largest in the Islands is Waimea Canyon, located on the western side of Kauai, and known as the "Grand Canyon of the Pacific." For thousands of years winds and rain have chiseled away the brown and red volcanic rock scoring the tropical highlands of Kauai into a canyon nearly 3,000 feet deep. With the rising sun, the ten-mile canyon is shadowed with soft blues and greens; while the setting sun transforms the colors of the canyon walls into brilliant copper, green, and lava red.

Lihue is the largest city on the island and also the county seat. Unlike Oahu, Kauai does not have a highway which completely circles the island. On Kauai, visitors travel along either the road which goes north or the one to the west of Lihue. When they reach the end of either, they return to Lihue and drive in the opposite direction. But, there is so much to see that no one complains of the trip. Just a casual glance at the rugged Na Pali Coast of Kauai explains why it is practically out of the question at this time to connect Kauai's two highways.

Along the highway north of Lihue, the first point of interest is the Wailua River, the state's only navigable inland waterway. A boat ride up the river ends in an impressive Fern Grotto shadowed by lush tropical undergrowth.

Further along the windward coast of Kauai, plunging cataracts of water appear, cascading down from green hillsides. There are also fields of cane, pineapple, and rice; an extensive coconut grove

Kauai

The Garden Island

Home of the 150th

AC&W Squadron

planted by Hawaiian royalty; and an ancient heiau (temple) which has been restored.

Further down the coastline near Kapaa, a huge mountain takes the form of a sleeping giant serves as a point of departure for an ancient Hawaiian legend.

On past Kapaa, Anahola, and Moloaa, Kilauea Bay appears and high on a cliff at the entrance to the bay is the world famous Kilauea Light House—the largest lighthouse of its kind in the world.

Now, it's on to Hanalei Bay and Hanalei Valley, known as the "birthplace of rainbows," where the movie-musical "South Pacific" was filmed. It is also the place where the "menehunes," a mythical dwarf-like people were said to have gathered as they attempted to leave the islands and to seek a new home.

Kauai and the Hanalei area are famous for the legends of the menehunes, who could perform amazing feats of construction in one night. It is believed that the menehunes were the first Polynesian settlers in the islands, a small people who were later displaced by the larger framed Polynesians who came later. According to legend, menehunes wanted to leave because too many of the larger people were invading their area.

From Hanalei, the road leads on to Haena Point and ends along the North Shore and past several caves supposedly created by the ancient volcano goddess, Pele, when she lived on Kauai. One of them, Maniniholo Cave is a dry cave. Further down the road are the wet caves of Waikapalae and Waikanaloo, and then the beautiful white sand beach at Haena Point where the road ends.

The road west out of Lihue along the South Shore leads to another Menehune monument, the Fish Pond at Nuimalu. Legend says that the Menehunes built the pond for a princess and her brother, provided the work could be completed

unobserved by mortals in one night. However, the princess and her brother watched from a nearby hillside. The menehunes discovered them—so legend goes—and turned them to stone pillars, which still stand on a hillside near the pond.

Further west at Sprouting Horn, when the tide is running high, waves pound through lava tubes and are forced through a hole in the coastline, shooting water high into the air. According to legend, the sound made by the gushing water is the cry of a sea monster trapped in the tubes.

The drive along the South Shore also leads through miles of flowing cane fields in Hanapepe Valley. The view toward the mountains is one of red cliffs with beautiful colors that contrast with the valley's of green and blue foliage.

Waimea, where the famous Captain Cook landed is a short drive away. Captain Cook was the first western explorer to "discover" the Islands. And, also a Russian Fort was built in Waimea in 1817 because an employee of the Russian Fur Company hoped to seize Kauai for his czar. However, the attempted seizure failed and all that remains are rocky ruins.

A prominent feature of this side of the island is Kokee State Park. The picturesque park is nearly 4,000 feet high, and offers cool, crisp weather year round. There are cabins, dormitories, and camping facilities available. The park is just a few minutes drive from HANG's 150th Aircraft Control and Warning Squadron.

At the end of the road is a panoramic lookout high over the "Valley of the Lost Tribe," Kalakau Valley. The steep walls of the valley drop 4,000 feet to the ocean floor, making the lush valley and its white sand beach inaccessible by land.

This is Kauai, "The Garden Island"—a land of dreams come true—an island that comes as close as any to being a South Sea paradise.



The Spouting Horn, a natural sea geyser, is located on the shores of Kauai. Wave action through underwater lava tubes causes the spouting action.

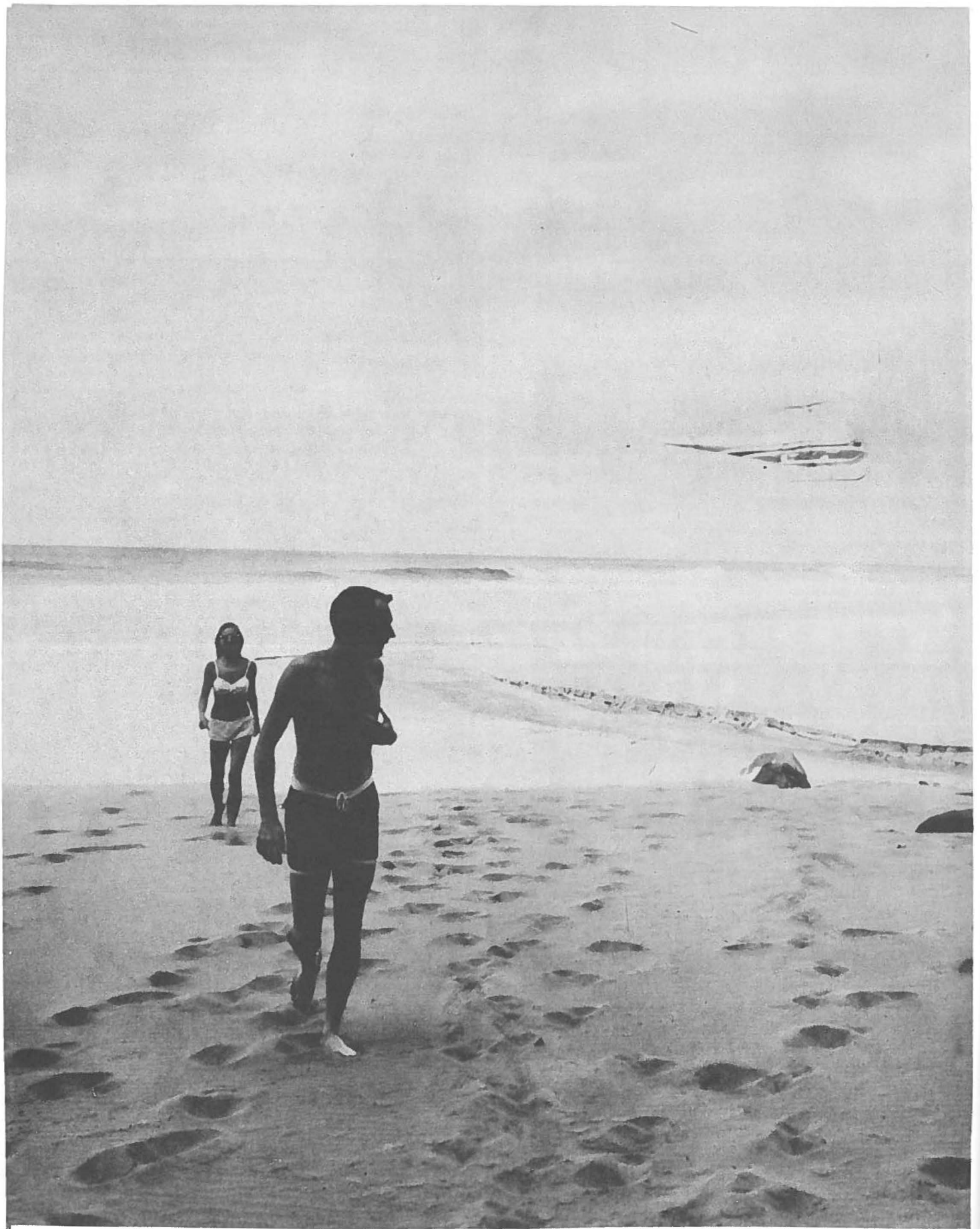
Clydes Shoes
54 Market St.
Phone: 244- 0166

Globe Electric
1161 Lower Main St.
Phone: 244-5541

Furumoto Service Station
1188 Lower Main St.
Phone: 244-5523



Lumahai Beach is one of Kauai's many scenic attractions. It was used as one of the primary locations for the movie "South Pacific."



Several of Kauai's nearly inaccessible beaches are easily reached by helicopter.

Shido Store
Kapaa, Kauai
Ph. 822-4307

GREEN GARDEN

HANAPEPE 335-5422

Wailua Marina Restaurant
On your way to Fern Grotto
Phone: 822-4311

Yukimura Store
3219 Kuhio St.
Ph. 245-4049

Barbecue Inn
2982 Kress St.
Ph. 245-2921

C. F. Nilson Inc.
Nawiliwili, Kauai
Ph. 245-6228

KAUAI BEVERAGE & ICE CREAM CO.

Distributors for

Pepsi Cola, Canada Dry and "Hawaii's Own" Products

3166 Oihana Phone: 245-6372

After Hours Call 245-6425



Restaurant

THE MENEHUNE COFFEE SHOP

at Lihue Airport

Visit the Colonel

COLONEL SANDERS'

Kentucky Fried Chicken

3229 KUHIO HWY. & AIRPORT RD.,
Lihue... Also on Maui and Hawaii...



CLUB JETTY

COCKTAILS - DINING

DANCING

Overlooking Scenic

Nawiliwili Harbor Phone 245-4970

CANTONESE and
AMERICAN CUISINE

Floor Shows and

Dancing Nightly

Except Tuesday

4:30 p.m. - 4 a.m.

WHEREVER YOU GO ON KAUAI

Great Food!

FREEZES • FLOATS
SHORT ORDERS

Lihue—4302 Rice St.



Fast Service!

MALTS • SHAKES

HAMBURGERS

Kapaa, Eleele &
Waimea

Delight Your Friends With a Box of Kauai's
Finest Preserves

Telephone: 332-1361 or 332-8959

HAWAIIAN FRUIT PRESERVING

KALAHEO, KAUAI (96741)

Building On Kauai?

See us for complete House Planning services

Call Barney Mateo

HALE KAUAI. LTD.

Phone: 245-4014

Plantation Gardens

RESTAURANT

KOLOA, POIPU BEACH, KAUAI

Ph. 742-1695



the anchorage KAUAI'S FINEST DINING

Kauai-Aspen-Scottsdale

An exciting on-the-beach setting on the Garden Isle.

Five scenic miles beyond Hanalei —
across the wooden bridges.

LUNCH from 11 AM
a variety of salads and sandwiches from \$1.35

DINNER from 6 PM
featuring Eastern corn-fed beef and
New Zealand lobster tail

COCKTAILS 'til 2 AM

the anchorage

courtesy car available
PHONE



in the Hanalei area
826-6122



MOTEL, CAFE & BAKERY

BREAKFAST — LUNCH — DINNER

Delicious Japanese, Chinese & American Food

Specializing in Broiled Steaks - Cocktails

Home-baked Pastries — Pies — Cakes

Call Ahead or Pickup Your Picnic & Box Lunches

OPEN DAILY 6:45 A.M. to 10:00 P.M.
SATURDAYS & SUNDAYS 7:00 A.M. to 10:00 P.M.

Reservations for Parties, Luncheon & Dinner Meetings

CALL
245-2333 245-2343

In the Heart of Lihue

3173 AKAHI ST.

Everything for a perfect meal

WAIANAE SUPER MARKET
85-880 Farrington Hwy.
Phone: 696-3325

Luzon Store
Naalehu, Hawaii
Ph. 929-7103

HAWAII PLASTICS CORP.
Authorized Distributors

Sheets — Rods — Tubes
Plexi-View Mirrors
P.O. BOX 3685 • (568 DILLINGHAM BLVD.) • PHONE 841-3358

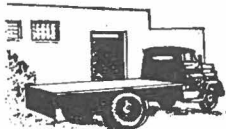
*Aloha Guardsmen
from*

SAVEMORE SUPER MARKET
Meats • Groceries • Vegetables • Liquor
for the best, call
935-0077
660 Kilauea Ave. — Hilo, Hawaii

Tropic Isle Tours

DIV. OF B' GLAD CORP

"Go on your dream vacation, fly with Tropic Isle Tours. Pick your own itinerary or let Tropic Isle Tours plan around your interests. Hotel reservations and car can be arranged with guide.
Ph. 732-2805 Be surprised at the Reasonable cost."



746 AUAAHI STREET
P. O. BOX 1388
PHONE 537-4515

HONOLULU TRANSPORT & WAREHOUSE CORP.

BLACK and WHITE

ENTERPRISES LTD.

677 NORTH KING STREET
HONOLULU, HAWAII 96817 TAXICAB TRUCK RENTALS
PHONE: 847-4094 LIMOUSINE TOURS

CONGRATULATIONS GUARDSMEN
FROM
BUILDERS PRODUCTS CORPORATION

819 Moowaa St.
Ph. 847-1378

DE MARCO'S SHELL SERVICE

Ph. 422-6667 *De Marco's Bicycle Shop*
SALES • SERVICE • REPAIRS

MOANALUA SHOPPING CENTER
BOX 6011 HONOLULU 96818 PHONE: 422-5595

HEBB & NARODICK CONSTRUCTION COMPANY

Mililani Town
Ph. 623-3985

SINCE 1850

Dohrmann Co.

DESIGNERS AND SUPPLIERS TO THE HOTEL AND FOOD SERVICE INDUSTRIES

1122 Ala Moana Blvd.
Honolulu, Hawaii 96814
(808) 536-1911

East-West Realty, Inc.

1124 FORT ST. MALL RM. 209
HONOLULU, HAWAII 96813
TELEPHONE 536-1740

**LET
AIRWAYS
SPOIL
YOU!**

ALL NEW
1971 CARS

*
UNLIMITED
FREE MILEAGE

*
AIR CONDITIONED
CARS AT NO
EXTRA COST

*
FREE PICK-UP

*
FREE PINEAPPLES

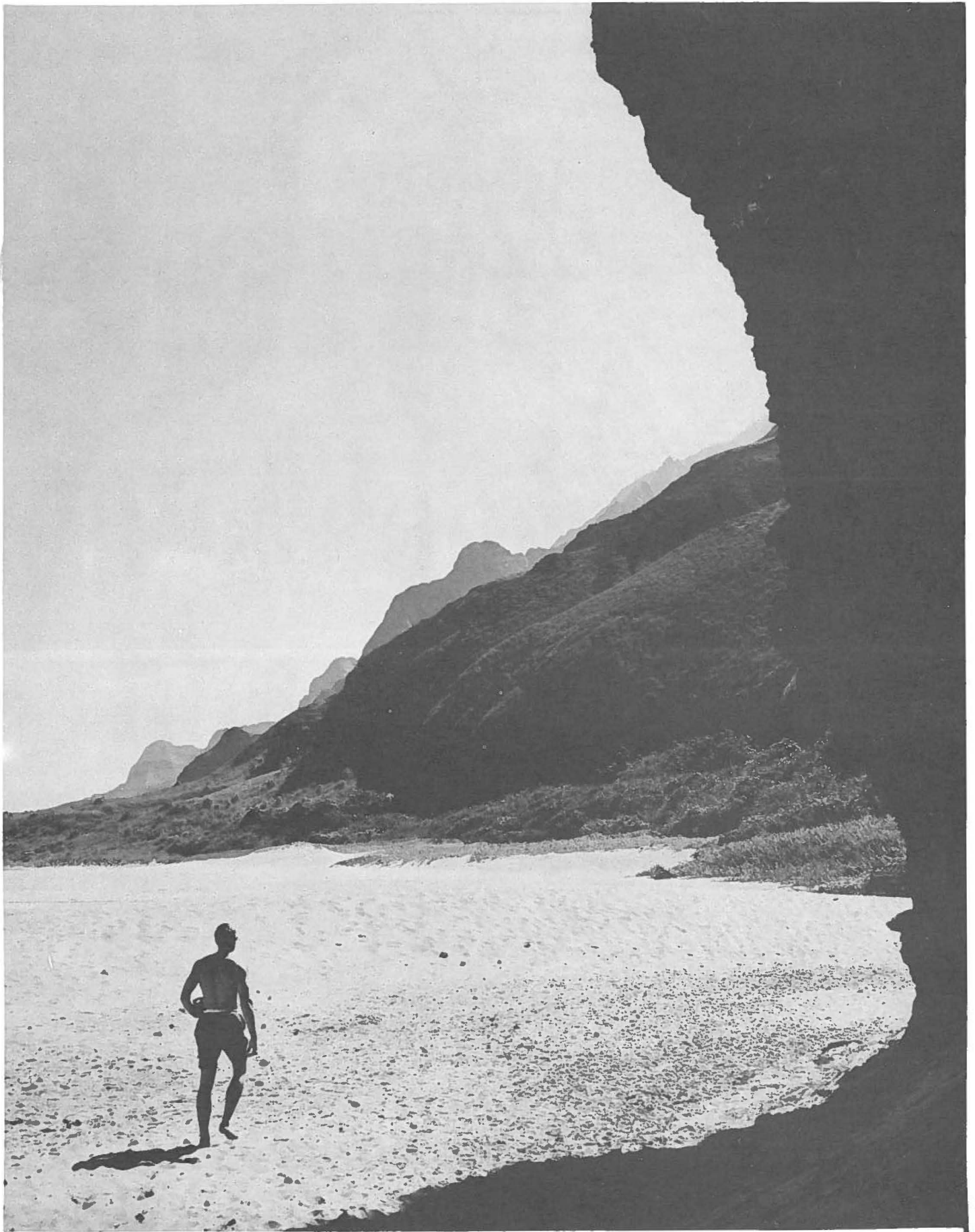
AS LOW AS \$8.50

Mini Compact.....\$ 8.50
Pinto • Toyota.....\$11.50
Cougar • Satellite \$15.50
Mini Bus.....\$21.50

CALL
955-5528
WAIKIKI
847-2081
AIRPORT



WAIKIKI: 2025 Kalakaua Ave. / AIRPORT: 2140 Nimitz Hwy.



The rugged Na Pali cliffs loom above Kauai's North Shore. A trail winds up the mountain in the foreground and into the uninhabited valleys beyond.



**You call it
the Pacific.**

**We call it
home.**

Pan Am 
The Pacific Expert.

RESERVATIONS: 955-9111



**DO IT
THE
HAWAIIAN
WAY**

THE SPIRIT OF HAWAII
OKOLEHAO

For that special feeling of Hawaiian Aloha, it's the Island's own Drink of Kings, Okolehao. Compare Okolehao with the taste of the great, light Canadians. Savor "Oke on the Rocks" or pleasure up with the warm weather cooler — "Coke and Oke." Now packaged distinctively in Hawaiian tiki de-

canters, Okolehao and a full line of delicious Island-produced liqueurs are available at Hawaii's finest restaurants, lounges and retail stores. And for a lasting memento of your visit, take home the Lava Rock Collector's Decanter — it's Okolehao wrapped in a volcano!

Okolehao 80 Proof • Produced only by Hawaiian Distillers • Honolulu, Hawaii