

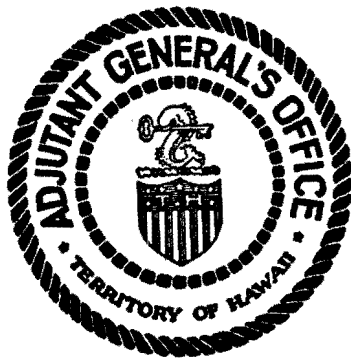
ANNUAL REPORT
of
THE ADJUTANT GENERAL
Territory of Hawaii

JULY 1, 1940 to JUNE 30, 1941

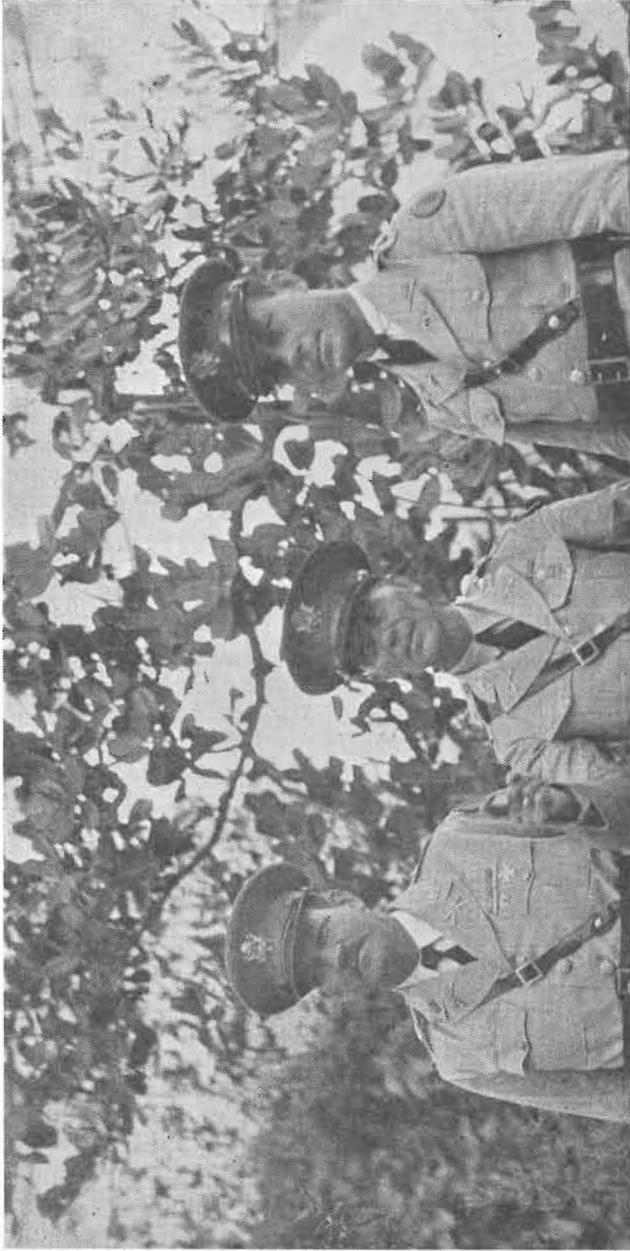


ANNUAL REPORT
of
THE ADJUTANT GENERAL
Territory of Hawaii

JULY 1, 1940 to JUNE 30, 1941



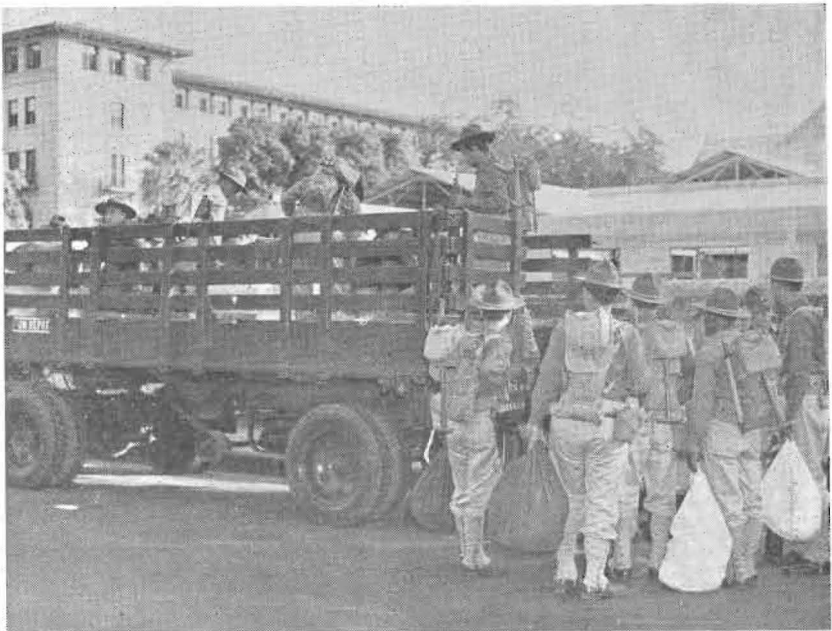
PRINTED BY
HAWAIIAN PRINTING CO., LTD.
1942



The Three Colonels, and Ranking Officers, of the Hawaii National Guard in Active Federal Service
Left to right: Colonel W. A. Andersen, Inf., Commanding the 298th Inf.; Colonel P. M. Smoot, Inf., The Adjutant General of Hawaii and Territorial Director of Selective Service; and Colonel Gordon C. Ross, Inf., Commanding the 299th Infantry.



Units of the 298th Infantry Preparing to Leave the Honolulu Armory for Active Federal Service at Schofield Barracks.



Units of the 298th Infantry Enroute to Schofield Barracks for Active Federal Service.



Colonel Gordon C. Ross, 299th Inf., reviews plans with his regimental staff

Left to right, sitting: Lt. Col. Allen W. Smith, Executive Officer; Col. Ross; Capt. James Cruickshank, Adjutant; Maj. G. W. Tivy, Plans and Training Officer. Standing: Lt. Col. J. R. Herman, 21st Inf., Liaison Officer; Capt. A. H. Stone, Chaplain and Morale Officer; Maj. F. T. Voorhees, Supply Officer.



Other Island Units of the 299th Infantry (in Federal Service) Enroute to their Home Stations after Preliminary Training at Schofield Barracks.

TERRITORY OF HAWAII
THE ADJUTANT GENERAL'S OFFICE
HONOLULU

May 1, 1942.

Honorable Joseph B. Poindexter
Governor of Hawaii
Honolulu, T. H.

Sir:

In compliance with Section 7822, Revised Laws of Hawaii 1935,
I have the honor to submit the Annual Report of The Adjutant General
of the Territory of Hawaii for the period July 1, 1940—June 30, 1941.

Respectfully yours,

(Signed) P. M. Smoot

P. M. SMOOT,
Colonel, Infantry,
The Adjutant General.

LIST OF THE ADJUTANTS GENERAL OF THE
TERRITORY OF HAWAII

NAME	RANK	FROM	TO
John H. Soper	Lieut. Colonel	July 6, 1894	August 6, 1903
	Colonel	August 7, 1903	April 1, 1907
John W. Jones	Colonel	April 2, 1907	August 15, 1915
Samuel I. Johnson	Colonel	August 16, 1915	November 11, 1915
	Brigadier General	November 12, 1915	February 19, 1918
Will Wayne	Major	Acting March 1, 1918	
	Colonel	App. June 8, 1918	September 21, 1918
Harry S. Hayward	Colonel	September 23, 1918	February 8, 1921
William D. Potter	Colonel	February 9, 1921	July 31, 1923
John W. Short	Major	Acting Aug. 1, 1923	August 24, 1923
Perry M. Smoot	Major	Acting Aug. 25, 1923	
	Colonel	App. Sept. 20, 1923	Incumbent

NOTE: Periods of "Acting The Adjutant General" shown only in cases where there was no actual The Adjutant General.

ANNUAL REPORT
OF
THE ADJUTANT GENERAL, TERRITORY OF HAWAII
July 1, 1940—June 30, 1941

Introduction

The past year of the Hawaii National Guard has been one of the most active and important in the history of its existence. This has been caused by unsettled international conditions and by the call of the Guard into federal service for the period of twelve (12) consecutive months of active duty with the United States Army.

Organization

The Hawaii National Guard consists of the State (Territorial) Staff and Detachment; 298th Infantry (less 3rd Bn.) and 299th Infantry (less Company L).

Stations of Units

The stations of the various units of the Hawaii National Guard as of October 14, 1940, were as follows:

Office of the Commander-in-Chief	Honolulu, Oahu
Office of The Adjutant General	Honolulu, Oahu
State (Territorial) Staff and Detachment	Honolulu, Oahu
298th Infantry	Honolulu, Oahu
Headquarters, Headquarters Company, Service Company, Band, and Medical Detach. (Regt'l), 299th Infantry	Honolulu, Oahu
Headquarters and Headquarters Detachment, 1st Bn., 299th Infantry	Wailuku, Maui
Medical Detachment, 1st Bn., 299th Infantry	Wailuku, Maui
Company A, 299th Infantry	Lahaina, Maui
Company B, 299th Infantry	Wailuku, Maui
Company C, 299th Infantry	Paia, Maui
Company D, 299th Infantry	Wailuku, Maui
Headquarters and Headquarters Detachment, 2nd Bn., 299th Infantry	Hilo, Hawaii
Medical Detachment, 2nd Bn., 299th Infantry	Hilo, Hawaii
Company E, 299th Infantry	Hilo, Hawaii
Company F, 299th Infantry	Hilo, Hawaii
Company G, 299th Infantry	Olaa, Hawaii
Company H, 299th Infantry	Honomu, Hawaii
Headquarters and Headquarters Detachment, 3rd Bn., 299th Infantry	Lihue, Kauai
Medical Detachment, 3rd Bn., 299th Infantry	Lihue, Kauai
Company I, 299th Infantry	Hanapepe, Kauai
Company K, 299th Infantry	Kaunakakai, Molokai
Company M, 299th Infantry	Lihue, Kauai

Strength of Guard on July 1, 1940

As of July 1, 1940, there were on the Active List 109 officers and 1725 enlisted men, or a total of 1834 officers and enlisted men. On the Inactive List there were 15 officers and 343 enlisted men. Holding commissions in the National Guard of the United States were 3 enlisted men.

Armory Drill Attendance

The average Armory Drill attendance percentages of the organizations for the three months (July, August and September) of the fiscal year preceding the induction of the Hawaii National Guard into federal service were:

Territorial Detachment	95.01
298th Infantry	73.80
Headquarters Company	69.68
Service Company	86.82
Medical Department Detachment	63.53
Headquarters Detachment, 1st Bn.	95.53
Company A	71.61
Company B	67.66
Company C	77.71
Company D	68.50
Headquarters Detachment, 2nd Bn.	73.31
Company E	75.83
Company F	74.00
Company G	61.29
Company H	67.23
Band	78.57
299th Inf.	89.37
Headquarters Co. (less ATP)	72.62
Anti-Tank Platoon	97.12
Service Company	73.15
Headquarters, Regimental Medical Detachment (Rifle) ..	84.20
Headquarters Detachment, 1st Bn.	100.00
Medical Detachment, 1st Bn. Section (Rifle)	93.96
Company A	92.86
Company B	85.10
Company C	91.56
Company D	88.84
Headquarters Detachment, 2nd Bn.	98.09
Medical Detachment, 2nd Bn. Section (Rifle)	88.35
Company E	92.50
Company F	90.47
Company G	97.62
Company H	95.83
Headquarters Detachment, 3rd Bn.	85.40
Medical Detachment, 3rd Bn. Section (Rifle)	90.83
Company I	92.26
Company K	88.53
Company M	81.10
Band	82.46

Field Training

State (Territorial) Staff and Detachment: The State (Territorial) Staff and Detachment, consisting of 6 officers and 18 enlisted men, held twenty-one days of field training from July 7 to 27, 1940, inclusive, at the Honolulu Armory. The entire period was devoted to the vital task of perfecting Selective Service plans for the mobilization of Hawaii's manpower. This training was of great importance, and both the officers and enlisted men achieved gratifying results during this training period, during which was laid the foundation for the smooth-running Territorial Selective Service machine which went into operation on Tuesday, November 12, 1940.

298th Infantry: A report of the field training of the 298th Infantry, Colonel Wilhelm A. Andersen, commanding, for the period June 8 to 28, 1940, inclusive, is contained in the fiscal report for the period ending June 30, 1940.

299th Infantry: The 299th Infantry, commanded by Colonel Gordon C. Ross, held its annual field training at the Paukukalo Camp Site, Paukukalo, Island of Maui, for a twenty-one day period, September 7 to 27, 1940, inclusive.

Service Medals and Bars

Awarded during the Past Fiscal Year

10-Year Continuous Service Medals

Capt. F. H. Kanahele, 298th Inf.
Capt. James W. Lovell, 298th Inf.
Former 1st Lt. Kenneth L. Look, Hq. Co., 298th Inf.
1st Sgt. Luka Kanakaole, Co. F, 299th Inf.
Tech. Sgt. Levi Kaohu, Jr., State (Terr.) Detach.
Staff Sgt. Eddie Keliipio, Hq. Co., 299th Inf.
Staff Sgt. Tai Hoy Lau, Hq. Co., 298th Inf.
Sgt. Richard Ching, Co. C, 298th Inf.
Sgt. Homer Chong, Co. C, 299th Inf.
Sgt. George R. Correa, Anti-Tank Platoon, 299th Inf.
Sgt. Howard S. Lau, Co. C, 298th Inf.
Sgt. Samuel Waiwaiole, Co. C, 298th Inf.
Corp. Louis S. Perreira, Anti-Tank Platoon, 299th Inf.
Pvt. Marion Amaral, Co. F, 299th Inf.
Pvt. Hideo Sato, Hq. Detach., 1st Bn., 299th Inf.
Pvt. George Souza, Co. C, 299th Inf.

25-Year Service Bar

Maj. Frederic L. Morong, 298th Inf.

20-Year Service Bars

Pvt. Henry K. Bridges, Co. F, 298th Inf.
Pvt. Simeon Loihana, Co. A, 299th Inf.

15-Year Service Bars

Master Sgt. Charles K. Reeves, Service Co., 298th Inf.
Tech. Sgt. Levi Kaohu, Jr., State (Terr.) Detach.
Staff Sgt. William T. C. Lin, Service Co., 298th Inf.
Sgt. Bevin Kila, Co. B, 298th Inf.
Sgt. Samuel Mokila, Co. D, 299th Inf.
Sgt. Antone Morris, Anti-Tank Platoon, 299th Inf.
Pvt. Marion Amaral, Co. F, 299th Inf.

Federal Recognition of Medical Units

The federal recognition of the various Medical Detachments received during this past fiscal year were published in General Orders No. 43, this headquarters, dated August 26, 1940, as follows:

MILITARY DEPARTMENT
Territory of Hawaii
OFFICE OF THE ADJUTANT GENERAL
Honolulu, T. H.

August 26, 1940.

GENERAL ORDERS
NO. 43

SUBJECT: FEDERAL RECOGNITION OF MEDICAL UNITS.

1. The following Medical units of the Hawaii National Guard have been granted recognition to date by the Chief, National Guard Bureau:

- Headquarters, Regimental Medical Detachment, 299th Infantry (Rifle), with station in Honolulu; effective May 1, 1940.
- Medical Detachment, 1st Battalion Section, 299th Infantry (Rifle), with station in Wailuku; effective May 2, 1940.
- Medical Detachment, 2nd Battalion Section, 299th Infantry (Rifle), with station in Hilo; effective May 1, 1940.
- Medical Detachment, 3rd Battalion Section, 299th Infantry (Rifle), with station in Lihue; effective June 26, 1940.

By Order of the Acting Governor:

P. M. SMOOT
The Adjutant General

OFFICIAL:
DIST. "A"
(SEAL)

National Matches, Camp Perry, Ohio

Hawaii was authorized to send both a National Guard and a Civilian Rifle Team to the National Matches at Camp Perry, Ohio, which were held from September 1 to September 21, 1940, inclusive. The Hawaii National Guard Team was composed of the following listed personnel:

Honolulu, Oahu

Maj. Henry L. Best, Inf., State Staff (Team Captain)
Capt. Oliver H. Kupau, 298th Inf.
Capt. John C. Simerson, 298th Inf. (Team Coach)
Staff Sgt. Richard R. Stevens, Hq. Co., 299th Inf.
Sgt. Herman K. Puahi, Co. C, 298th Inf.
Sgt. Edward C. Tung, Co. F, 298th Inf.
Sgt. Harry H. Wood, Co. F, 298th Inf.

Wailuku, Maui

2nd Lt. John S. Wilmington, 299th Inf.
Sgt. Gabriel P. Moniz, Co. B, 299th Inf.
Corp. William L. Apana, Co. B, 299th Inf.

Hilo, Hawaii

Sgt. William K. Napeahi, Co. F, 299th Inf.

Olaa, Hawaii

Sgt. Frank Roman, Co. G, 299th Inf.
Corp. David Luiz, Co. G, 299th Inf.
Pvt. Anthony Pacheco, Co. G, 299th Inf.

The Hawaii National Guard Team made a splendid record, taking 7th place among the guard teams of the territories and 48 states, and 21st place in competition with 125 service and civilian teams.

The Civilian Team consisted of:

Buchanan, Claire O. (Team Captain)—Wailuku, Maui
Warren, Charles J. (Team Coach)—Hilo, Hawaii
Anderson, Gus—Honolulu, Oahu
Aona, Thomas—Hilo, Hawaii
Awana, Theodore L.—Honolulu, Oahu
Dang, Raymond—Honolulu, Oahu
Kekahuna, James I. P.—Honolulu, Oahu
Lee, Harold K. F.—Honolulu, Oahu
Pombo, Augustine—Wailuku, Maui
Sylva, Curtis F.—Paia, Maui
Wagner, Charles F.—Honolulu, Oahu
Yap, Ernest M. Y.—Hilo, Hawaii
Yee, Walter S. P.—Honolulu, Oahu
Yee, William S. Q.—Honolulu, Oahu.

The Hawaii Civilian Team, very much handicapped by inability on the part of a number of its best shooting members to attend the matches, took 63rd place among the 125 service and civilian team entries.

Chief, National Guard Bureau's Indoor Matches

Company Team Match, 1940

Highest in the Territory of Hawaii: Company F, 299th Infantry.

Individual Match, 1940

Sergeant William Napeahi, Company F, 299th Infantry, won first place among contestants of Hawaii and of the Ninth Corps Area.

Federal Service

During the early part of August, it was rumored that all National Guard units would be ordered into federal service for a twelve months' period of active duty. By the first of September specific instructions covering this subject were received by The Adjutant General of Hawaii. Those officers below the rank of Captain and enlisted personnel with dependents were permitted to resign or be discharged from the service. Rules for rigid physical examinations were issued by the National Guard Bureau, and detailed instructions were received for induction into federal service.

In compliance with Executive Order No. 8551, dated September 25, 1940, the 298th and 299th Infantries, under the command of Colonels W. A. Andersen and Gordon C. Ross, respectively, were ordered into federal service for a period of 12 months, effective October 15, 1940, by the following General Orders No. 51 of this headquarters, dated 8 October 1940:

MILITARY DEPARTMENT
Territory of Hawaii
OFFICE OF THE ADJUTANT GENERAL
Honolulu, T. H.

8 October 1940.

GENERAL ORDERS
NO. 54

SUBJECT: ORDERING HAWAII NATIONAL GUARD INTO MILITARY SERVICE OF THE UNITED STATES.

1. The following Executive Order* issued by the President of the United States is published for the information and guidance of all concerned:

“EXECUTIVE ORDER
ORDERING CERTAIN UNITS AND MEMBERS OF THE NATIONAL GUARD OF THE UNITED STATES INTO THE ACTIVE MILITARY SERVICE OF THE UNITED STATES.

“By virtue of the authority conferred upon me by Public Resolution No. 96, 76th Congress, approved August 27, 1940, and the National Defense Act of June 3, 1916, as amended (39 Stat. 166), and as Commander-in-Chief of the Army and Navy of the United States, I hereby order into active military service of the United States, effective October 15, 1940, the following units and members of the National Guard of the United States for a period of twelve consecutive months, unless sooner relieved:

UNITS

All Federally recognized elements of:

.....
298th Infantry
299th Infantry
.....

MEMBERS

“All members, both active and inactive, of the units listed above. “All persons so ordered into the active military service of the United States are, from the effective date of this order, relieved from duty in the National Guard of their respective states so long as they shall remain in the active military service of the United States, and during such time shall be subject to such laws and regulations for the government of the Army of the United States as may be applicable to members of the Army whose permanent retention in the active military service is not contemplated by law.

“Commissioned officers and warrant officers appointed in the National Guard of the United States and commissioned or holding warrants in the Army of the United States, and affected by this order, are hereby ordered to active duty under such appointments and commissions or warrants.

“All officers and warrant officers of the National Guard, appointed in the National Guard, who shall have been Federally recognized or examined and found qualified for Federal recognition, and shall have been assigned to units ordered to active duty under this order prior to the effective date thereof, who do not hold appointments in the National Guard of the United States in the same grade and arm or service in which they respectively have been most recently Federally recognized or have been most recently examined and found qualified for Federal recognition, are hereby tendered appointments in the National Guard of the United States in the same grade and arm or

service in which they shall have been most recently Federally recognized or examined and found qualified for Federal recognition.

"Warrant officers and enlisted men of the National Guard of the United States who hold appointments as officers in the National Guard of the United States and commissions in the Army of the United States, and are assigned to units ordered to active duty under this order prior to the effective date hereof, are hereby ordered to active military service as commissioned officers of the Army of the United States under those appointments and commissions.

The White House,
September 25, 1940.

FRANKLIN D. ROOSEVELT"

2. All unit commanders throughout the Hawaii National Guard having inactive commissioned or enlisted personnel assigned to their commands will immediately notify such personnel, either in person or by registered mail, to report for active duty with the unit to which assigned, on October 15, 1940, or show cause for discharge.

3. All units required to render a monthly report of National Guard Duty performed (NGB Form 100), will prepare and submit a final report as of midnight October 14, 1940. A final Armory Drill Pay Roll will also be prepared by each unit involved and submitted as of the above date.

4. The provisions of existing regulations relative to mobilization will be complied with. The attention of all unit commanders is directed to the requirements of AR 130-10 and Induction Circular No. 1, NGB, dated September 5, 1940, which will be strictly adhered to.

5. All Federal property in the hands of units will be taken into Federal Service on the induction date. State property at each station will be properly prepared to protect it against misuse and stored in a safe dry place in the armory in which it is being used. Unless advised to the contrary each unit or organization commander in charge of an armory which is owned by the Territory of Hawaii, will upon the date of departure from his station, close the armory in question and see that it is securely locked. Keys will be delivered to custodians designated by this Headquarters, and if none so designated, keys will be delivered, or mailed to this Headquarters.

By Order of the Governor:

P. M. SMOOT
The Adjutant General

OFFICIAL:
DIST. "A"
(SEAL)

*No. 8551, dated 25 September 1940 (added by G. O. 65, AGO—Haw., dated 12/16/40).

The authorized strength of the Hawaii National Guard at induction date of the 298th and 299th Infantry (October 15, 1940) was 122 officers, 2 warrant officers and 1929 enlisted men. The actual strength at induction date was 126 officers, 1 warrant officer and 1616 enlisted men.

The racial groups of the Hawaii National Guard at date of induction of the two infantry regiments (October 15, 1940) had changed very little from the previous year and were as follows:

Hawaiians and Part-Hawaiians	662
Portuguese	322
Chinese	207
Caucasians (Portuguese not included)	172
Puerto Ricans	79
Filipinos	52
Koreans	47
Japanese	40
Colored	2
Others	33
Total	1,616

On the morning of October 15, 1940, all units of the 298th and 299th Infantries assembled at their respective armories, prepared to take the field for their twelve months of federal service. The entire 298th Infantry (Honolulu Armory) and the units of the 299th Infantry stationed in Iolani Barracks (Honolulu), comprising Regimental Headquarters, Headquarters Company, Service Company, Band and Medical Detachment, left their armories at 9:00 A.M. for Schofield Barracks by truck convoy. Upon arrival at Schofield, the 298th Infantry and Honolulu units of the 299th Infantry were billeted under tentage in the National Guard Area (Upper Post). The units of the 299th Infantry stationed on the Islands of Hawaii, Kauai and Molokai were assembled and mustered into federal service at their respective armories, while the Maui units of the 299th Infantry reported to the Paukukalo Camp Site for induction. By October 22nd, the outside island units of the 299th Infantry had embarked from their home stations and arrived at Schofield Barracks, where they were billeted under tentage at the Upper Post with the Guard troops from Honolulu.

A physical examination of enlisted men was performed just prior to induction by medical officers of the Hawaii National Guard. Another physical examination of enlisted men immediately after induction was conducted by Regular Army medical boards. The physical examination of Guard officers took place after induction, being conducted by Regular Army medical boards. The final results of these physical examinations were as follows:

Losses			
Officers—27		Enlisted Men—272	
Losses by Specific Causes			
Physical Officers & EM	Resignations Officers	Defense Projects Enlisted Men	Dependents Enlisted Men
258	16	3	22

New wooden barracks in the National Guard Area were rapidly constructed for the 298th Infantry, the work being done by the 3rd U.S. Engineers and completed in fourteen days. Upon completion of this construction, new wooden barracks for the 299th Infantry were immediately started in the Upper Post and on December 3rd that regiment moved into its new quarters.

Both regiments immediately took over the strenuous duties of becoming professional soldiers. The Regular Army assisted materially in the various phases of making the Guardsmen competent field soldiers.

On October 21, 1940, The Adjutant General of Hawaii received instructions from The Adjutant General of the Army concerning ordering the State (Territorial) Staff and Detachment into federal service. The Commanding General, Hawaiian Department immediate-

ly issued orders to that effect, the effective date being October 22, 1940. The Adjutant General of Hawaii was not ordered into federal service on October 22nd. He was appointed Territorial Director of Selective Service, the Presidential appointment of November 15, 1940, being confirmed by the U.S. Senate on November 25, 1940. Three (3) officers and eighteen (18) enlisted men were called to active duty on October 22, 1940, and assigned to Selective Service work in the Honolulu Armory. Two (2) officers of the Staff were granted waivers in order to remedy physical defects. However, these two officers were eventually ordered into federal service on February 6 and June 16, 1941, respectively.

Colonel P. M. Smoot, The Adjutant General of Hawaii, was ordered into federal service on March 25, 1941, by Special Orders No. 70, Headquarters Hawaiian Department, dated March 24, 1941, and was assigned to duty as Director of the Selective Service System in Hawaii. By General Orders No. 9, Military Department, Territory of Hawaii he was directed to continue as The Adjutant General of Hawaii.

The Military Department, Territory of Hawaii issued the following listed orders ordering members of the State (Territorial) Staff and Detachment into federal service:

General Orders No. 9, dated 27 March 1941

General Orders No. 10½, dated 19 June 1941.

Construction work on new barracks for the 299th Infantry on the outside islands was rushed. On April 22, 1941, Company I, 299th Infantry left Schofield for Burns Field, Kauai, to assist the WPA and a small corps of engineers in the construction work. Company E, 299th Infantry left April 29th for Hilo to assist in construction of new barracks near the Hilo Airport, and on April 30th, Company K, 299th Infantry left for Homestead Field, Molokai, to erect new quarters. Funds for this building program were furnished from federal sources. However, the Territory of Hawaii, recognizing the importance of constructing new barracks on the outside islands, came to the aid of the Military Department. An emergency appropriation of \$27,000.00 was provided by Act 65, Session Laws of Hawaii 1941, for use in the building program at the National Guard Camp at Paukukalo, Maui, where the 1st Battalion, 299th Infantry was soon to be stationed. As of June 30, 1941, the work at Paukukalo, comprising twenty-four new barracks, a new water supply system, modern sewerage system, new truck storage facilities and a recreation center, is being rushed to completion. Camp Paukukalo, when construction now under way is completed, will have facilities for housing a regiment of infantry under National Guard Tables of Organization, and will prove a decided asset to the Hawaii National Guard upon its return to a territorial status.

On May 27, the Commanding General, Hawaiian Department forwarded instructions to the Commanding General, Schofield Barracks as to the return of units of the 299th Infantry to their home stations. The following listed troop movements took place on the dates indicated:

Units, 299th Inf.	Stations	1941
Regimental Hq.		
(2 Officers; 4 EM).....	Iolani Barracks, Honolulu	June 1
Band.....	Reception Center, Schofield Barracks	" 6
Service Company.....	Paukukalo, Maui	" 1
Hq., Regt'l Med. Det. (Rifle).....	Paukukalo, Maui	" 1
Company A.....	Paukukalo, Maui	" 1
Company C	Lihue Airport, Kauai	" 1

1st Bn. & Special Units (less Companies A & C).....	Paukukalo, Maui	June 12
2nd Bn. Hq. & Special Units.....	Hilo, Hawaii	" 1
Company E.....	Hilo, Hawaii	April 29
Company F.....	CCC Camp, Waimea, Hawaii	June 1
Company G.....	Morse Field, Hawaii	" 1
Company H.....	Hilo Airport, Hawaii	" 12
3rd Bn. Hq. & Special Units.....	Lihue Airport, Kauai	" 1
Company I.....	Burns Field, Kauai	April 22
Company K.....	Homestead Field, Molokai	April 30
Company M.....	Hanapepe, Kauai	June 1

Strength as of June 30, 1941

Strength as of June 30, 1941, was:

127 Officers
1 Warrant Officer
2,532 *Enlisted Men
<hr/>
2,660

*1464 of the Enlisted Men were Hawaii National Guardsmen, the remaining 1068 being Selectees.

Fiscal

Funds Disbursed for Fiscal Year July 1, 1940—June 30, 1941:

Federal Funds	\$102,151.55
Territorial Funds (General Fund)	\$45,872.81
Territorial Funds (Repairs & Alterations, Paukukalo Camp Site— Emergency appropriation)	27,000.00 72,872.81

Total Federal and Territorial Funds Expended \$175,024.36

Armory Board

The past fiscal year has been a very active one for the Armory Board. Upon the entrance of the Hawaii National Guard into federal service, all permanent caretakers who entered federal service had to be replaced by eligible civilian personnel. A great problem confronted the Military Department in this replacement program of obtaining men who possessed the necessary qualifications and who were willing to accept such low paying positions.

The Armory Board recommended that the four main armories, namely, Honolulu, Island of Oahu; Lihue, Island of Kauai; Wailuku, Island of Maui; and Hilo, Hawaii, be kept open for rental purposes, provided there would be no interference with military objectives. However, rental fees were to be raised in order that the Territory would suffer no loss in the care and maintenance of these buildings. Such action, it is believed, has been most beneficial to the Territory, as the following financial report shows:

ARMORY BOARD REPORT
July 1, 1940—June 30, 1941

	Hono- lulu	La- haina	Wai- luku	Hilo	Lihue	Hana- pepe	Kauna- kakai	Olaa Cottage	Iolani Bks.	TOTAL
Balance fwd.										
June 30, 1940	\$ 59.60	\$ 548.99	\$ 842.06	\$ 270.76	\$ 61.67	\$ 20.82	\$ 10.46	\$ 27.53	\$ 43.37	\$ 1385.26
Receipts for Fisc.										
Yr. 1940-41	1440.12	44.00	635.00	291.83	382.00	217.80	105.90	57.50	3174.15
TOTALS	\$1499.72	\$592.99	\$977.06	\$562.59	\$443.67	\$238.62	\$ 10.46	\$133.43	\$100.87	\$4559.41
Disbursements										
Fisc. Yr.										
1940-41	171.93	71.80	7.50	251.23
BALANCE	\$1327.79	\$592.99	\$977.06	\$490.79	\$443.67	\$238.62	\$ 10.46	\$133.43	\$ 98.37	\$4308.18

Conclusion

In the annual report of The Adjutant General of Hawaii for the fiscal year July 1, 1939—June 30, 1940, it was urged that our territorial legislature be more liberal in its appropriations for the Military Department. However, this urge evidently was not heeded as our 1941-43 budget was reduced instead of being increased. As a result of this questionable policy, the Military Department has been forced to accomplish additional burdens of activities on less and mostly untrained personnel. The armories owned by the Territory and the many thousands of dollars of territorial property must be maintained and kept in good usable condition even when the troops are in federal service.

Many annual reports in the past have stressed great importance upon the long existing shortage of office personnel in this department, and this past year has again shown the correctness of this claim. Long hours and low rates of pay for all personnel in this department have been the rule and not the exception. Such long hours devoted to a tremendous volume of work have caused lowered efficiency of an originally smooth-running organization. Had appropriations for this department been comparable with other departments of the Territory, such a state of affairs could have been avoided. Therefore, it is again urged that, in view of the National Defense plans and the tremendous part that Hawaii must play in this world-wide conflagration, liberality in appropriations for the Military Department be in order.

During the past year inspection trips to the outside islands have been made possible to a great extent through the courtesy of the United States Coast Guard, and to a lesser degree by the United States Navy, on account of the niggardly travel allowance appropriation for this department.

Our legislators should always remember that the Hawaii National Guard is their Guard and that they (the legislators) hold within their power the making or breaking of such an organization. By their liberal financial encouragement the Hawaii National Guard will become an efficient and worthy component of that great Army of the United States.

Respectfully submitted,

(Sgd.) P. M. Smoot
P. M. SMOOT,
Colonel, Infantry,
The Adjutant General.

APPENDIX "A"
ROSTER OF OFFICERS BY UNITS AS OF OCTOBER 14, 1940

Territorial Staff Roster

Colonel Perry M. Smoot, Inf., The Adjutant General
Maj. H. L. Best, Inf., Maj. F. Xavier, ORD, Maj. J. I. deVille, FD, Maj. E. M. Bolton, AGD, Capt. J. T. M. Chang, Inf., Capt. L. R. Dawson, SC., 1st Lt. J. V. Smoot, Inf.

298th INF.

Col. W. A. Andersen, CO
Lt. Col. F. Turner, Ex.

Capt. J. W. Lovell, S-1, Maj. J. C. Simerson, S-2 and S-3, Capt. E. M. Pennell, Chap., 1st Lt. A. E. O'Brien, Chap.

SPECIAL UNITS

Hq. Co.

Capt. C. J. Olds
Capt. R. L. Stevenson
1st Lt. F. A. Butterfield

Band

W. O. C. S. Kiehm

SERVICE CO.

Maj. J. H. Yap
Capt. N. O. A. Peck, S-4
Capt. W. H. Tilley
1st Lt. A. E. McKenzie
1st Lt. A. T. Steensrud

MEDICAL DETACHMENT

Maj. F. L. Morong
Capt. D. L. Pang
Capt. C. F. Tessmer
1st Lt. R. L. Hendee

1st BN.

Lt. Col. P. B. Porter
1st Lt. L. E. Bellinger

Co. A

Capt. O. H. Kupau
2nd Lt. G. E. Goss, Jr.
2nd Lt. J. G. Kealoha
2nd Lt. R. S. Watson

Co. B

Capt. R. R. McEldowney
2nd Lt. K. M. Bowen
2nd Lt. C. S. Carmichael
2nd Lt. H. U. Smithline
2nd Lt. K. F. Kauka

Co. C

Capt. F. H. Kanahahele
2nd Lt. W. R. Chillingworth
2nd Lt. H. S. Lau
2nd Lt. R. G. Marzano

299th INF.

Col. G. C. Ross, CO
Lt. Col. A. W. Smith, Ex.

Capt. J. Cruickshank, S-1; Maj. G. W. Tivy, S-3; Maj. A. H. Stone, Chap.

SPECIAL UNITS

Hq. Co.

Capt. C. J. Guard, S-2
1st Lt. N. H. Kauaihilo

Band

W. O. R. J. Macedo

SERVICE CO.

Maj. F. T. Voorhees, S-4
Capt. G. T. McInerny
1st Lt. G. R. Hansen
2nd Lt. I. F. Martin
2nd Lt. T. W. Smith

MEDICAL DETACHMENT

Capt. E. O. Avakian
Capt. P. N. Cockett
1st Lt. F. H. Tong
1st Lt. W. N. Yuen
1st Lt. S. R. Wallis
1st Lt. F. S. Lee

1st BN.

Lt. Col. A. K. Silva
2nd Lt. J. S. Wilmington

Co. A

Capt. F. A. Alameda
2nd Lt. F. H. Buch
2nd Lt. W. F. Prescott

Co. B

1st Lt. G. L. H. Wong
2nd Lt. D. K. C. Wong

Co. C

Capt. J. E. Conley
2nd Lt. H. J. Eby, Jr.
2nd Lt. W. E. Foster
2nd Lt. S. V. McGerrow

Co. D

Capt. D. H. Lansing

Co. D

1st Lt. D. P. Kahanamoku
 1st Lt. W. Y. Keliinoi
 1st Lt. A. J. Mendonca
 1st Lt. J. K. Whitmarsh
 2nd Lt. A. Mugford

2nd BN**Hq.**

Maj. B. F. Modisett
 1st Lt. W. C. Koch

Co. E

Capt. R. H. Smoot
 2nd Lt. R. S. Blake
 2nd Lt. F. Marzano
 2nd Lt. J. R. Porter

Co. F

Capt. B. N. Farden
 2nd Lt. G. M. L. Bray
 2nd Lt. A. S. Fraser
 2nd Lt. H. S. Mendonca

Co. G

Capt. J. D. Hitchcock
 2nd Lt. A. W. P. Cook
 2nd Lt. C. R. Johnson
 2nd Lt. L. F. Willison

Co. H

Capt. S. L. Keala
 1st Lt. J. K. Kapua
 1st Lt. M. K. Makekau, Jr.
 1st Lt. P. B. Peck
 2nd Lt. R. B. Ensminger, Jr.

2nd BN**Hq.**

Lt. Col. C. J. Benda
 2nd Lt. C. Ernest

Co. E

Capt. L. W. Bryan
 2nd Lt. W. D. Berry
 2nd Lt. L. O. Holzman

Co. F

1st Lt. G. H. Scruton

Co. G

Capt. E. K. Hoho
 2nd Lt. W. H. Schieve

Co. H

1st Lt. A. H. Cabrinha
 1st Lt. E. M. Osorio
 1st Lt. G. G. Richardson

3rd BN

Lt. Col. H. Merrill
 1st Lt. F. W. Weber

Co. I

Capt. N. Witten

Co. K

Capt. C. A. Brenaman

Co. M

Capt. A. W. Duvel
 1st Lt. F. M. Ching
 1st Lt. J. A. Johnson, Jr.
 1st Lt. T. E. Ellis
 1st Lt. J. J. Gerdes
 2nd Lt. W. J. Stroh

**OFFICERS HOLDING TERRITORIAL COMMISSIONS ONLY
 AS OF JUNE 30, 1941**

Name	Rank	Assignment
Fronk, Clarence E.	Colonel	Medical Corps
Hoopai, William	Lt. Colonel	Inf., Aide to the Governor
Dunham, Walter R.	Lt. Colonel	Aide to the Governor
Judd, Henry P.	Lt. Colonel	Chaplain
Bolton, Edward M.	Major	Adjutant General's Dept.
Darnsted, H. Lester	Major	QMC
DeMerritt, Dean R.	Major	Adjutant General's Dept.
Gates, Levi O.	Major	Infantry
Searle, John W.	Major	Infantry
Bacon, Herbert F.	Captain	Corps of Engineers
Billsborough, Charles L.	Captain	Corps of Engineers
Dawson, Lee Reno	Captain	Signal Corps
Gross, Andrew	Captain	Chaplain
Crosby, Leonard W.	1st Lieut.	Inf.
Lau, H. S.	2nd Lieut.	Signal Corps
Carter, James C.	Warrant Officer	
Firth, Charles M.	Warrant Officer	
Marion, Arthur S.	Warrant Officer	
Moniz, Lawrence P.	Warrant Officer	
Thomas, Cid C.	Warrant Officer	

NAVAL MILITIA

Name	Rank	Assignment
Rothwell, Guy N.....	Commander.....	Aide to the Governor
King, Francis T.....	Lieut. (JG).....	

**RETIRED OFFICERS
as of June 30, 1941**

Brigadier General John H. Soper
Major Charles M. Coster
Major Clifton H. Tracy
Captain James A. Ai
Captain Louis R. Medeiros
2nd Lieut. Richmond K. Ellis
2nd Lieut. Charles C. Young

INDEX

	Page
Adjutant General of Hawaii, Active Duty	17
Adjutants General, List of	8
Ancestral Lineage	15-16
Appendix "A"	21-22-23
Armory Board	18-19
Armory Drill Attendance	10
Attendance, Armory Drill	10
Award of Service Medals and Bars	11
Bars, Service, Award of	11
Chief, National Guard Bureau's Indoor Matches	13
Commissions, Territorial Officers Holding	22
Conclusion	20
Construction Work	16-17
Drill Attendance, Armory	10
Enlisted Men, Losses	16
Examinations, Physical	16
Expenditures, Federal	18
Expenditures, Territorial	18
Federal Funds	18
Federal Recognition of Medical Units	11-12
Federal Service	13-14-15-16-17-18
Field Training	10-11
Fiscal	18-19
Funds, Armory Board	19
Funds, Federal	18
Funds, Territorial	18
Introduction	9
Letter of Transmittal	7
Lineage, Ancestral	15-16
Location of Units	9-17-18
Losses, Enlisted Men	16
Losses, Officers	16
Marksmanship	12-13
Matches, Chief, National Guard Bureau's Indoor	13
Matches, National	12-13
Medals, Service, Award of	11
Medical Units, Federal Recognition of	11-12
Militia, Naval	23
National Matches	12-13
Naval Militia	23
Officers Holding Territorial Commissions	22
Officers, Losses	16
Officers, Retired	23
Officers, Roster of	21-22-23
Organization	9
Organizations, Stations of	9-17-18
Physical Examinations	16
Racial Groups	15-16
Retired Officers	23
Rifle Matches	12-13
Rifle Teams	12-13
Roster of Officers	21-22-23
Service, Federal	13-14-15-16-17-18
Service Medals and Bars	11
Stations of Units	9-17-18
Stations, Return to Other Island	17-18
Strength of Guard	9-15-18
Territorial Appointments	22
Territorial Funds	18
Training, Field	10-11
Units, Medical, Federal Recognition of	11-12
Units, Return to Other Islands	17-18
Units, Stations of	9-17-18