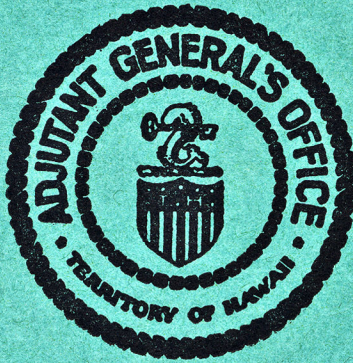


Annual Report
of
The Adjutant General
Territory of Hawaii

July 1, 1935, to June 30, 1936



MILITARY DEPARTMENT
TERRITORY OF HAWAII

Station List, Roster and Directory
of Officers and Units of the
Hawaii National
Guard

OFFICE OF
THE ADJUTANT GENERAL
Honolulu, T. H.

NOTE: This directory is published for the information and guidance of all concerned. All errors, omissions and changes of any nature whatsoever will be reported to the Personnel Officer, Military Department, Territory of Hawaii.

OCTOBER 1, 1936
(Destroy all previous copies)

ROSTER OF OFFICERS

AND

ASSIGNMENTS

COMMANDER-IN-CHIEF

Honorable Joseph B. Poindexter, Governor of Hawaii

GOVERNOR'S STAFF

The Adjutant General and Chief of Staff

Colonel, Perry M. Smoot, Inf.,

Assistant The Adjutant General

Colonel, WILHELM A. ANDERSEN, 298th Infantry

AIDES-DE-CAMP

Commander W. Wayne Tod, U.S.N., Retired

Lieut. Colonel William Hoopai, 298th Inf.,

Lieut. Colonel Walter R. Dunham, T. H.,

Commander Guy N. Rothwell, N. M., T. H.,

TERRITORIAL STAFF

Colonel P. M. Smoot, Infantry, The Adjutant General.

Major Edward M. Bolton, Adjutant General's Department.

Major Frederic L. Morong, Medical Department, (H.N.G. Gas Officer)

Major Henry L. Best, Infantry, Inspector General's Department

Major Francis Xavier, Ordnance Department.

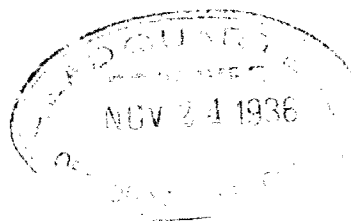
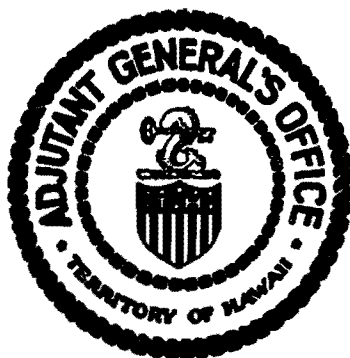
Captain Louis M. Vivas, Quartermaster Corps

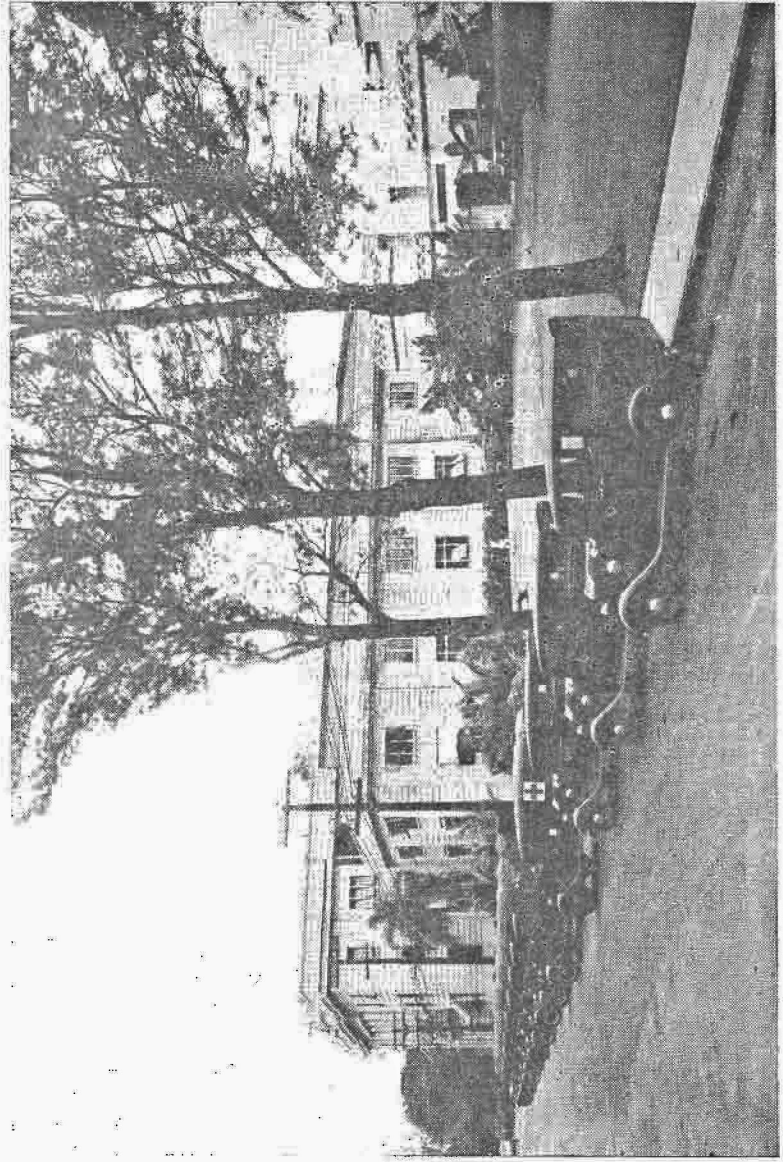
Captain Earl R. McGhee, Judge Advocate General's Department

Captain Joseph I. de Ville, Finance Department, & U. S. P. & D. O.

Annual Report
of
The Adjutant General
Territory of Hawaii

July 1, 1935, to June 30, 1936





Motor transportation of the Hawaii National Guard. In background (left) Honolulu Armory, Home of the 298th Infantry, and Iolani Barracks, headquarters of the 299th Infantry.

LIST OF THE ADJUTANTS GENERAL OF THE TERRITORY OF HAWAII

<i>Name</i>	<i>Rank</i>	<i>From</i>	<i>To</i>
John H. Soper	Lieut. Colonel	July 6, 1894	August 6, 1903
	Colonel	August 7, 1903	April 1, 1907
John W. Jones	Colonel	April 2, 1907	August 15, 1915
Samuel I. Johnson	Brig. General	August 16, 1915	February 19, 1918
Will Wayne	Major	Acting March 1, 1918	
	Colonel	App. June 8, 1918	September 21, 1918
Harry S. Hayward	Colonel	App. Sept. 23, 1918	February 8, 1921
William D. Potter	Colonel	February 9, 1921	July 31, 1923
John W. Short	Major	Acting Aug. 1, 1923	August 24, 1923
Perry M. Smoot	Colonel	App. Aug. 25, 1923	Incumbent

NOTE: Periods of "Acting The Adjutant General" shown only in cases where there was no actual The Adjutant General.

CONTENTS

	Page
Accidents	20
Adjutant General's Office	2
Adjutants General, List of	iv
Administration, Office	2
Aides	Appendix "A"
Allotment, Increased	8, 21, 31, 32
Ambulance	14
Ammunition	22
Appointments, Territorial	Appendix "A"
Armament	22
Armories	9, 24, 32
Armory Board Funds	23
Armory Drill Attendance	8
Armory Schools	11
Attendance, Armory Drill	8
Attendance, Field Encampments	12
Caretakers, Federal Property	14
Coats of Arms	30
Code Books	8
Commissioned Grades	5
Conclusion of Report	30
Construction	19
Correspondence Courses	9, 21
Courts-Martial	21
Deserters, Investigations re	20
Distinctive Insignia	30
Drill Attendance	8
Employees, Pay	31
Encampments, Attendance at	12
Encampments, Health Conditions at	20
Engineer Officer	30
Enlisted Grades	6
Enlisted Men, Gains	6
Enlisted Men Holding Reserve Commissions	Appendix "A"
Enlisted Men, Losses	6
Equipment, Medical	20
Equipment, Ordnance	22
Equipment, Web	14
Expenditures, Federal	15
Expenditures, Territorial	16

	Page
Extension Courses	9, 21
Facilities, Training	9
Federal Funds	15
Federal Property	17
Field Training	12
Finance Section	14
Funds, Armory Board	23
Funds, Federal	15
Funds, Inspections of	20
Funds, Territorial	16
Gains, Enlisted Men	6
Governor's Aides	Appendix "A"
Grades, Commissioned	5
Grades, Enlisted	6
Headquarters, Sections of	2
Health	19
Historical Section	27
Illnesses	19
Immunization	19
Inactive National Guard	6; Appendix "A"
Increased Allotment	8, 21, 31, 32
Injuries	19
Inoculations	19
Insignia, Distinctive	30
Inspections, Annual Armory	10
Inspections, Annual Encampment	10, 20
Inspections, Funds	20
Inspections, Territorial Armory	20
Inspections, Territorial Field	20
Inspections, Training	20
Inspector General's Section	20
Instructors, Regular Army	3
Intelligence Section	8
Introduction	2
Investigations	20
Judge Advocate General's Section	21
Lectures, Judge Advocate General	21
Legislature	30
Letter of Transmittal of Report	1
Location of Units	5
Losses, Officers and Enlisted Men	6
Marksmanship	10
Matches, Rifle	10
Medals, Service	7
Medical Equipment	20
Medical Section	19

	Page
Military Academy	20, 30
Mission, Training	8
Morale	32
Motor Transportation	18
Motor Vehicles	14, 18
National Guard Inactive Officers	6; Appendix "A"
National Guard of the United States	Appendix "A"
Nativity Report	7
Office Administration	2
Office of The Adjutant General	2
Office of the Territorial Quartermaster	14
Office, Engineer	30
Officers, Commissioned	5
Officers, Inactive National Guard of U.S.	Appendix "A"
Officers, Losses	6
Officers, Roster of	Appendix "A"
Officers' Station List and Directory	Appendix "A"
Operation of Ranges	9, 25
Ordnance Section	22
Organization	4
Organizations, Stations of	5
Parades	10
Paukukalo Camp Site	9, 20
Pay, Employees	31
Personnel Section	4
Plans and Training Section	8
Policies, Training	8
Progress, Training	8
Property, Federal	17
Property Shortages	19
Property, Territorial	19
Qualification with Weapons	10
Quartermaster's Office, Territorial	14
Radio Sets	14
Ranges, Target	9, 25
Records, Service	2
Regular Army Instructors	3
Report, Conclusion of	30
Report, Nativity	7
Retired List	Appendix "A"
Rifle Matches	10
Rifle Practice	10
Rifle Ranges	25
Rifle Teams	10
Roster of Officers	Appendix "A"
Sanitation	20

	Page
Schools, Armory	11
Schools, Service	11
Service Medals	7
Service Records	3
Shortages, Property	19
Small Arms Competitions	10
Stations of Units	5
Strength	5
Supply, Finance, Construction & Transportation Section	14
Target Ranges	9, 25
Territorial Appointments	Appendix "A"
Territorial Funds	17
Territorial Naval Militia	Appendix "A"
Territorial Property	19
Territorial Quartermaster, Office of	14
Territorial Staff	Appendix "A"
Trailer	14
Training Activities	10
Training Facilities	9
Training, Field	12
Training, Inspection	20
Training Mission	8
Training Policies	8
Training Progress	8
Training Section	8
Trucks	16, 18
United States Military Academy	20,30
United States Property & Disbursing Officer, Change of	14
Units, Stations of	5
Vehicles	14, 18
Web Equipment	14

LETTER OF TRANSMITTAL

TERRITORY OF HAWAII
THE ADJUTANT GENERAL'S OFFICE
HONOLULU

August 14, 1936

Honorable Joseph B. Poindexter
Governor of Hawaii
Honolulu, T. H.

Sir:

In compliance with the request of the Governor under date of June 30, 1936, and in compliance with Section 7822, Revised Laws of Hawaii 1935, I have the honor to submit the Annual Report of The Adjutant General of the Territory of Hawaii for the period July 1, 1935-June 30, 1936.

Respectfully yours,

P. M. SMOOT,
Colonel, Infantry,
The Adjutant General.

ANNUAL REPORT
OF
THE ADJUTANT GENERAL,
TERRITORY OF HAWAII
JULY 1, 1935 - JUNE 30, 1936

INTRODUCTION

The headquarters of the Hawaii National Guard is required to be so organized that the conduct of the affairs of the Guard, as required by the Laws of Hawaii, The National Defense Act and the regulations of the National Guard Bureau may be expeditiously performed, and in addition must carry out the duties pertaining to the administration, training, supply, construction and transportation normally delegated to a command equivalent to a brigade of infantry. To perform these duties the routine work of this headquarters is divided into the following sections:

1. Personnel
2. Intelligence
3. Plans and Training
4. Supply, Finance, Construction and Transportation
5. Territorial Staff Group (Medical, Legal, Administrative, Inspection, Transportation and Supply)

These sections are organized so as to be capable of expansion in case of an increase in the Hawaii National Guard. At present, however, the limited military personnel and clerical assistance make it necessary for the same person to perform the duties of more than one section.

Office Administration—The volume of routine correspondence handled by this headquarters is still heavy, although lessened considerably by recently adopted simplified methods. It must be borne in mind, however, that the keeping of records pertaining to personnel and property is exacting and must be handled accurately.

During the past six months the demands on this headquarters for information from service records have been particularly heavy, due to the many requests from veterans of the World War for assistance in establishing their identity in order that they could obtain the bonus granted by the Federal Government. The accurate and extensive personnel records maintained by the Hawaii National Guard made it possible to establish the identity of over a thousand veterans. Frequently long search was necessary but in no case was a failure reported. The personal acquaintance of the veterans on duty in this headquarters with many of the War veterans proved of great assistance. The World War records in this headquarters were made available to veteran organizations on many occasions and it was a pleasure to cooperate. Several over-zealous civic and commercial organizations endeavored to obtain access to our veterans personnel records previous to the payment of the adjusted compensation (bonus) by the United States. Acting upon instructions and messages of warning, all activities applying, other than Government and Veterans, were refused access to these records.

Unless additional permanent clerical help is furnished this office by the Territory of Hawaii, it will soon be impracticable for the present small force to keep the records, orders and correspondence up to date.

Regular Army Instructors—The primary duty of the Regular Army Instructors on duty with the National Guard is to give, by advice and assistance, the fullest aid in the theoretical and practical instruction and training of the organizations to which they are assigned. In the performance of this duty the fact will not be lost sight of that upon each National Guard commander devolves the full responsibility for the instruction and training of his command, and that he should be encouraged to the utmost to exercise such functions. One of the outstanding duties of instructors is, therefore, to develop teaching ability and qualities of leadership in the National Guard officers and noncommissioned officers, and at the same time give full advantage of the instructors' technical knowledge, training and experience.

The Hawaii National Guard has been fortunate in having assigned to it instructors and sergeant-instructors who are capable and well-equipped to perform their duties, and who have established cordial relations with the organizations to which they are assigned. They have rendered valuable assistance and their efforts are highly appreciated.

The officers and noncommissioned officers of the instructor staff now on duty with the Hawaii National Guard are as follows:

NATIONAL GUARD OFFICER,
HAWAIIAN DEPARTMENT

Major Elmer G. Lindroth, Infantry, Senior Instructor
Captain Richard G. McKee, Infantry, Asst. to the Senior Instructor

ISLAND OF OAHU

Major Harold E. Potter, Infantry, Instructor, 298th and 299th Infantries
Staff Sergeant Oscar McDole, DEML, Sergeant-Instructor, 298th Infantry
Sergeant Earl J. Almaw, DEML, Sergeant-Instructor, 299th Infantry

ISLAND OF HAWAII

Major Ben Stafford, Infantry, Instructor, 299th Infantry
Sergeant Homer W. Krantz, DEML, Sergeant-Instructor, 299th Infantry

ISLAND OF MAUI

Major Harry J. Collins, Infantry, Instructor, 299th Infantry
Sergeant Charlie L. Clark, DEML, Sergeant-Instructor, 299th Infantry

1st SECTION—PERSONNEL

Major Francis Xavier, Ord. Dept., Chief of Section
Organization—The Hawaii National Guard consists of the Territorial (State) Staff and Detachment, 298th Infantry (less Inactive 3rd Battalion) and 299th Infantry (less Inactive 3rd Battalion).

Stations of Units—The stations of the various units of the Hawaii National Guard are as follows:

Office of the Commander-in-Chief.....	Honolulu
Office of The Adjutant General.....	Honolulu
Territorial (State) Staff and Detachment.....	Honolulu
298th Infantry.....	Honolulu
299th Infantry (less Howitzer Company; Medical Dept. Det.; 1st and 2nd Bns.)....	Honolulu
Howitzer Company, 299th Infantry.....	Honomu
Medical Dept. Detachment, 299th Infantry.....	Hilo
Hdqs. & Hdqs. Co., 1st Bn., 299th Infantry.....	Wailuku
Companies B and D, 299th Infantry	Wailuku
Company A, 299th Infantry.....	Lahaina
Company C, 299th Infantry.....	Paia
Hdqs. & Hdqs. Co., 2nd Bn., 299th Infantry.....	Hilo
Companies F and H, 299th Infantry	Hilo
Company E, 299th Infantry.....	Papaikou
Company G, 299th Infantry.....	Olaa

Strength—The strength allotted the Hawaii National Guard at present is set at 110 commissioned officers, 2 warrant officers, and 1,606 enlisted men. On June 30, 1936, there were 106 commissioned officers and 1,577 enlisted men, distributed as follows:

	298th Inf.	299th Inf.	TS & TD	Total
Officers	51	47	8	106
Warrant Officers (Band Leaders)	0	0	0	0
Enlisted Men	807	749	21	1577
Totals	858	796	29	1683

COMMISSIONED OFFICERS BY GRADE

	298th Inf.	299th Inf.	TS & TD	Total
Colonels	1	1	1	3
Lt. Colonels	1	1	2
Majors	5	4	4	13
Captains	16	14	3	33
1st Lieutenants	15	14	29
2nd Lieutenants	13	13	26
Totals	51	47	8	106

ENLISTED RETURNS BY GRADE

	I	II	III	IV	V	VI	VII	Total
298th Infantry	4	13	7	87	92	162	442	807
299th Infantry	4	13	4	80	78	158	412	749
Territorial Detachment..		1	2	3	4	4	7	21
Totals	8	27	13	170	174	324	861	1577

The strength of the Hawaii National Guard on June 30, 1936, represents a decrease of two commissioned officers, two warrant officers, and an increase of fifty-five enlisted men over that shown on June 30, 1935.

On the inactive list are six captains, four 1st lieutenants, seven 2nd lieutenants, and 265 enlisted men.

Seven enlisted men hold commissions as 2nd lieutenants in the National Guard of the United States.

The roster of officers on the active list is contained in Appendix "A."

OFFICERS AND WARRANT OFFICERS

Gains (8)

Transferred from Inactive National Guard	1
Original Appointments	7

Losses (12)

Resignations (Including 2 Warrant Officers)	4
Transferred to Inactive National Guard	8

Gains (853)

ENLISTED MEN

Enlisted	538
Reenlisted	250
Transferred from Inactive List	63
Restored to Duty	2

Losses (798)

Transferred to Inactive List	249
Honorably Discharged:	
Expiration of Term of Service	415
Removal of Residence	94
Special Authority of Governor	1
To enter U. S. Military Academy	2
Acceptance of Commission	7
Enlistments in Regular Service	2
Surgeon's Certificate of Disability	4
Discharged without honor:	
Conviction by Civil Court	11
Dropped as Deserters	11
Died	2

Nativity Report—The nativity report of the Hawaii National Guard as of June 30, 1936, is as follows:

	Officers & Warrant Officers	Enlisted Men
Hawaiians	8	320
Portuguese	7	289
Chinese	5	242
Americans (and other Caucasians)	61	167
Caucasian-Hawaiians	15	165
Chinese-Hawaiians	8	136
Puerto Ricans	80
Japanese	60
Portuguese-Hawaiians	2	49
Koreans	23
Spanish	17
Colored and all others	17
Filipinos	12
	106	1,577

The five leading nationalities are as follows:

1. Hawaiians and Part-Hawaiians	703
2. Portuguese	296
3. Chinese	247
4. Americans	228
5. Puerto Ricans	80

The following major nationalities have shown an increase as compared with the report of June 30, 1935:

Chinese	48
Hawaiians and Part-Hawaiians	45
Americans	17

The following major nationalities show a decrease as compared with the report of June 30, 1935:

Portuguese	5
Puerto Ricans	3

Service Medals—During the past year service medals and bars for continuous service in the Hawaii National Guard were presented to all officers and enlisted men who were entitled to them. At the present time 176 members of the Hawaii National Guard have received the Ten-Year Continuous Service

Medal. Many of these holders of service medals have also received bars for 15 and 20 years' service.

Armory Drill Attendance—The armory drill attendance percentages for the units of the Hawaii National Guard for the fiscal year are as follows:

298th Infantry	76.64
299th Infantry	83.39
Territorial (State) Detachment	95.65
HAWAII NATIONAL GUARD	85.22

Increased Allotment—The National Guard Bureau has allotted to the Hawaii National Guard a third battalion of infantry (less one company), which is to be assigned probably April 1, 1937. This increase in strength will enable units to be placed on the Islands of Kauai and Molokai.

2ND SECTION—INTELLIGENCE

The facilities for the assembling and disseminating of Intelligence reports and data have broadened considerably during the present year and closer cooperation has been maintained with the various branches of the Federal and Territorial Governments.

The supply of official maps has been increased and a great deal of important data have been incorporated in those now on hand. The Territorial Surveyor has been very generous in supplying needed data.

All code books are kept under suitable protection and are accounted for semi-annually.

3RD SECTION—PLANS AND TRAINING

Mission, Policies, and Progress—The training mission of the National Guard, as prescribed by the War Department, is as follows:

- a. To maintain the National Guard in condition to function effectively, at existing strength and without further training, when employed in minor emergencies by the Territorial or Federal Authorities.
- b. To provide a sufficiently trained force capable of rapid expansion to war strength, which with the minimum delay can

be employed in time of war as an effective component of the Army of the United States.

The scope of the training policies and objectives is being broadened each year to the end that the National Guard may keep abreast of the progress and development of plans for the national defense.

The extension or correspondence courses in military subjects offered by the Regular Army are very popular and applications for permission to pursue these courses are being received in ever-increasing numbers. All candidates for commissions or promotion are pursuing appropriate courses in order to fit themselves for their work. The work has increased to such an extent that it has been found necessary to seek assistance from volunteers among the National Guard officers in the inspection and grading of papers turned in by students. At the present time 116 members of the Hawaii National Guard, commissioned and enlisted, are enrolled in the Army Extension Courses.

Training Facilities—At the Paukukalo, Maui, camp site of the 299th Infantry, an officers' kitchen and dining hall and two officers' bath-houses have been erected during the past year, at a cost of \$8,560.00. A new water system has been installed, including a Diesel-driven centrifugal pump and additional water storage tank which will insure an adequate supply during camp for cooking, bathing and irrigation purposes. New roads have been constructed and trees planted about the grounds, and the camp site presents an improved and creditable appearance.

The indoor small bore range in the Honolulu Armory has been remodeled and accommodates ten targets at distances up to 75 feet. A small bore outdoor range has been improvised on the Punchbowl range, where twenty targets can be erected. The facilities offered by these ranges have greatly increased the interest displayed in small bore shooting not only among members of the Guard, but also among the personnel of the regular services and the civilian rifle clubs.

The territorially owned armories occupied by the Hawaii National Guard have undergone extensive repairs and im-

provements during the past year and are in a far more satisfactory condition with respect to safeguarding of property and better training facilities, and also in providing suitable facilities for civic affairs. The armory at Wailuku, Maui, received no repairs, however, as funds were provided for the erection of a new armory.

The new motor vehicles which were provided during the past year have been extensively used in armory and field training and are a welcome addition to the training facilities.

Training Activities—Troops participated in parades on Independence Day, Armistice Day, Memorial Day and Kamehameha Day, as well as on special occasions. Many units made overnight camps for instruction and training. The officers of the 298th Infantry made several tactical hikes to various places of military importance on Oahu.

Inspections—All headquarters and units were inspected by Federal officers in 1936 during the annual armory inspection and rated "Satisfactory." The Hawaii National Guard was also rated as "Satisfactory" during the annual field training. The inspectors were generous in their praise of all units, and especially the manner in which the overnight camp and maneuver of the 298th Infantry was conducted. The organization of the 2nd Battalion, 299th Infantry, from the Island of Hawaii, for embarkation and debarkation was excellent, and caused much favorable comment.

Marksmanship—Following is a consolidated table showing the numbers qualified with each type of weapon employed by the Hawaii National Guard in 1935. Figures in parenthesis indicate personnel who qualified during 1933 or 1934, and who were in the service at the end of the 1935 target practice season:

	Rifle	Auto. Rifle	Machine Gun	37MM & 3" TM	Totals
298th Inf.....	144 (238)	32 (33)	112 (25)	19 (8)	307 (304)
299th Inf.....	180 (118)	(14)	60 (50)	4	244 (182)
Totals	324 (356)	32 (47)	172 (75)	23 (8)	551 (486)

Rifle Matches—The Chief, National Guard Bureau's Indoor Rifle Matches were held during January and February,

1936. In the Company Match, Company C, 298th Infantry, the leading team from the Hawaii National Guard, placed 37th in a field of 215 entries from the entire National Guard of the United States. In the Regimental Team Match, the 298th Infantry placed 12th out of 34 entries of Regimental Teams. The members of the Regimental Team were as follows:

Major Farrant L. Turner, Team Captain
 Captain John C. Simerson, Team Coach
 Captain Oliver H. Kupau, Company A
 Sgt. Robert L. Stevenson, Company E
 Sgt. William Keik, Headquarters Company
 Sgt. L. Kong Kum, Company C
 Sgt. Edward C. Tung, Company A
 Sgt. James I. P. Kekahuna, Howitzer Company
 Corporal Halley Ontai, Company A
 Private Stephen Heu, Company C
 Private Ah Kong Seto, Hq. Co., 1st Bn.
 Private Arnold Kufferath, Company C

Suitable medals presented by the Chief, National Guard Bureau, were distributed to the members of the teams listed above.

In March, 1936, Company C, 298th Infantry, placed third out of 49 teams in the William Randolph Hearst Musketry Competition. This is the second year that Company C has represented the 298th Infantry in this match, which is a musketry problem fired on landscape targets.

Armory and Special Service Schools—Armory schools were held weekly during the armory training period. The Hawaii National Guard units on Oahu have been particularly fortunate during the past year in having lectures and demonstrations by competent Regular Army personnel.

Two vacancies were allotted the Hawaii National Guard at the Regular Army Service Schools during the past fiscal year. Lieutenant Colonel Hamilton Merrill, 299th Infantry, attended the National Guard and Reserve Officers Course at the Command and General Staff School, Fort Leavenworth, Kansas, from March 16 to June 18, 1936, and Captain Frederick T. Voorhees, 299th Infantry, attended the Company Of-

ficers Course at the Infantry School, Fort Benning, Georgia, from February 24 to May 23, 1936.

Following is the number of officers and enlisted men attending the various service schools since the World War:

	Officers	Enlisted Men
Army War College, Washington, D. C.	1
Command and General Staff School, Ft. Leavenworth, Kansas	2
The Infantry School, Ft. Benning, Georgia	21	6
The Signal School, Ft. Monmouth, N. J.	1
The Medical School, Carlisle Barracks, Pa.	2
The Chemical Warfare School, Edgewood Arsenal, Md.	1
	—	—
	28	6

Officers and enlisted men recommended for attendance at service schools must be specially selected individuals who will reflect distinct credit on the service. They should possess the attributes of a good instructor and must meet all the entrance requirements listed for the course for which application is made.

Commandants of Army Service Schools and chiefs of services have recommended that candidates prepare themselves by completing certain subcourses of Army Extension Courses. These recommendations have been concurred in by the Chief, National Guard Bureau, and have been incorporated in the entrance requirements for service schools.

Field Training—The annual encampments for the calendar year 1935 were held as indicated below:

At Honolulu, Oahu, July 13-27, 1935, incl.

	Officers	W.O.	Enl. Men
Territorial (State) Staff	6
Territorial (State) Detachment	19
	—	—	—
Total present at Honolulu.....	6	19

At Schofield, Oahu, Aug. 10-24, 1935, incl.

298th Infantry:	Officers	W.O.	Enl. Men
Headquarters	6
Headquarters Company	2	47
Service Company	4	1	65
Howitzer Company	2	40
Medical Department	5	19
Headquarters, 1st Battalion	1
Headquarters Company, 1st Battalion	2	13
Company A	2	42
Company B	3	45
Company C	2	45
Company D	3	46
Headquarters, 2nd Battalion	1
Headquarters Company, 2nd Battalion	2	16
Company E	2	43
Company F	3	43
Company G	2	41
Company H	2	43
Total present at Schofield	44	1	548

At Paukukalo, Maui, Sept. 14-28, 1935, incl.

Territorial (State) Staff and Detachment	1	2
298th Infantry (Attached)	1
299th Infantry:			
Headquarters	6
Headquarters Company	2	52
Service Company	4	66
Howitzer Company	2	55
Medical Department Detachment	2	23
Headquarters, 1st Battalion	1
Headquarters Company, 1st Battalion	2	17
Company A	2	60
Company B	3	56
Company C	3	61
Company D	3	51
Headquarters, 2nd Battalion	1
Headquarters Company, 2nd Battalion	2	18
Company E	2	63
Company F	3	58
Company G	3	43
Company H	3	52
Officers' Reserve Corps (Attached)	1
Total present at Paukukalo	47	677

RECAPITULATION

	Officers	W.O.	Enl. Men
Total present at Honolulu, Oahu	6	19
Total present at Schofield, Oahu	44	1	548
Total present at Paukukalo, Maui	47	677
	<hr/>	<hr/>	<hr/>
Total	97	1	1,244
Grand Total			1,342

4TH SECTION—SUPPLY, FINANCE, CONSTRUCTION AND TRANSPORTATION

Capt. Joseph I. deVille, F.D., HNG., U.S.P.&D.O. and
Territorial Quartermaster

CHIEF OF SECTION

I GENERAL

On January 1, 1936, Colonel P. M. Smoot was succeeded as U.S.P.&D. Officer for the Territory of Hawaii by Captain Joseph I. deVille, Finance Department, Hawaii National Guard.

In the early part of the year Colonel Smoot completely reorganized the U. S. Property and Disbursing Office and was successful in obtaining authority to pay the salary of a full time Property and Disbursing Officer from Territorial funds. This office is an important key position, and past experience has shown conclusively that it should not be a part time position. Immediate and lasting improvement has shown the necessity for a "full time" Quartermaster.

During the last year the Federal Government has been very liberal in its financial support of the Hawaii National Guard. Eight complete radio sets; one trailer; one ambulance; eleven 1½ ton trucks and three Reconnaissance trucks were received early in the year as well as new Medical and other equipment, including a 100 per cent replacement of web equipment. In addition, Congress authorized the employment of caretakers from Federal funds. These caretakers are primarily intended to protect Federal property and to reduce the large annual losses of property, as well as the losses from deterioration. This year Congress made provision for the establishment of a Terri-

torial pool of caretakers, and such a pool has been organized at the Honolulu armory. Considerable of these helpful and necessary additions to the local Guard are believed indirectly due to the visit of Major General George E. Leach, then Chief, National Guard Bureau.

II FISCAL ACCOUNTS

Federal Funds—(a) Funds expended by the United States Property and Disbursing Officer, Hawaii National Guard, for the Federal Government in the support of the Hawaii National Guard during the fiscal year ending June 30, 1936:

Pay of Caretakers	\$ 10,349.25
Expenses, Camps of Instruction	51,133.59
Pay of U. S. Property and Disbursing Officers	1,200.00
Employment of Range Keepers	740.00
N. I. R. Construction	8,965.46
Alteration, Renovation and Repairs to Articles of the Uniform	886.22
Gasoline and Oil for Armory Training	117.84
Maintenance of Organization Equipment	704.36
Intra-State Transportation (Freight and Supplies Inter-Island)	37.26
Repairs to Motor Vehicles	87.39
Musical Instruments, Supplies and Repairs	40.00

Total Federal Funds expended by U.S.P.&D.O.\$ 74,261.37

(b) The following expenditures for the fiscal year 1936 were made from funds allotted to the Commanding General, Hawaiian Department, for the support of the Hawaii National Guard:

Armory drill pay	\$110,000.00
Office equipment, supplies and stationery for Regular Army Instructor	79.17
Travel of Regular Army personnel in connection with visits of instruction	164.88
Travel of Regular Army personnel in connection with camps of instruction	356.48
Travel of Regular Army personnel in connection with National Guard, not covered above	142.00
Transportation of Federal Property	26.75
Expenses of Sergeant-Instructors, Regular Army	2,680.70
Packing and handling ammunition	93.51

Procurement of articles of uniform	10,182.98
Procurement of miscellaneous Q.M. equipment, supplies and repairs	2,725.87
Procurement of Ordnance equipment, supplies and re- pairs	5,506.94
Procurement of Engineer equipment, supplies and re- pairs	54.51
Procurement of Signal equipment, supplies and repairs....	359.16
Procurement of Medical equipment, supplies and repairs	536.40
Freight Charges, Camps of Instruction	1,440.70
Freight Charges, Armory Period	232.74

TOTAL	\$134,582.79
Total Value of 8 radio transmitting and receiving sets	2,660.48
Total Value of 11 1½ ton trucks	7,644.12
Total Value of 1 ambulance	975.00
Total Value of 1 trailer	485.00
Total Value of 3 Reconnaissance trucks received during year	2,280.09

TOTAL	\$ 14,044.69
Total Federal Funds expended by Commanding General, Hawaiian Department	134,582.79
Total Federal Funds expended by U.S.P.&D.O.	74,261.37

Grand total Federal Funds expended F. Y. 1936\$222,888.85

Territorial Funds—Territorial funds expended during the fiscal year were as follows:

Personal services	\$ 16,234.68
Other current expenses	13,780.50
Field training pay	10,746.60
Equipment	2,665.71
Motor Vehicle	995.00
Improvements to Buildings	10,432.13
Structures & Permanent improvements (Maui Camp Site)	2,153.67
TOTAL	\$ 57,008.29

The expenditure by the Federal Government for the support of the Hawaii National Guard is nearly four times that of the Territorial Government.

III PROPERTY

An effort is being made to dispose of all obsolete Federal military equipment now on hand. By a re-classification of property cards, and disposition of obsolete items, the number of stock cards on hand has been cut practically in half.

While the Hawaii National Guard is nearly completely equipped for extensive field service, there is a lack of motor transportation, pyramidal tents; field telephone wire, and a few other miscellaneous items.

During the latter part of the fiscal year, Khaki colored cotton caps, shirts and blouses were issued some organizations. It is hoped that all units will be completely uniformed by December 31, 1936. These complete uniforms will undoubtedly greatly improve the appearance and morale of our Guardsmen.

The following is a financial account of property for the fiscal year ending June 30, 1936:

Value of Property Dropped

(a) On Reports of Survey

Quartermaster Property	\$ 6,959.35
Signal Property	3,683.87
Ordnance Property	548.90
TOTAL	\$ 11,192.12

(b) Value of Property dropped on I & I Reports

Quartermaster Property	\$ 29,528.25
Chemical Property	2,199.96
Ordnance Property	1,078.55
Signal Property	178.24
Engineer Property	68.76
Medical Property	27.11
TOTAL	\$ 33,080.87

(c) Recapitulation of funds collected from officers and individuals of the Hawaii National Guard, during the fiscal year, on Statements of Charges:

Quartermaster Property	\$	417.85
Ordnance Property		176.79
Signal Property		74.80
Engineer Property		7.49
Medical Property35
TOTAL	\$	677.28

(d) Value of articles of the uniform dropped on
Certificates of Limited losses\$418.22

IV. MOTOR TRANSPORTATION

The following truck mileage was covered by the new vehicles of the Hawaii National Guard up to and including June 30, 1936.

W—201560	Reconnaissance	HNG No. 1	5101.5 miles
W—7246	Ambulance	HNG No. 2	632.9 miles
W—38290	1½ ton truck	HNG No. 3	1556.2 miles
W—38295	1½ ton truck	HNG No. 4	1013.0 miles
W—38180	1½ ton truck	HNG No. 5	1619.8 miles
W—201568	Reconnaissance	HNG No. 6	3174.9 miles
W—201567	Reconnaissance	HNG No. 10	712.1 miles
W—38300	1½ ton truck	HNG No. 11	479.0 miles
W—38301	1½ ton truck	HNG No. 12	534.4 miles
W—38302	“	HNG No. 13	436.9 miles
W—38303	“	HNG No. 14	362.8 miles
W—38304	“	HNG No. 21	4922.0 miles
W—38305	“	HNG No. 22	4920.0 miles
W—38275	“	HNG No. 23	319.1 miles
W—38287	“	HNG No. 24	1083.0 miles

Total mileage for all trucks 27,328.4 miles

The above mileage was accomplished at an average cost of .017 cents per mile, the major cost of which was borne by the Federal government.

Applicable tables of organization authorize the Hawaii National Guard three times as many vehicles as we have on hand at present but these additional vehicles will not be supplied until additional Federal funds become available for their purchase. New vehicles are to be furnished in small increments, which is satisfactory to this Headquarters as there are not now sufficient funds from the Territory of Hawaii to provide suitable motor vehicle shelter and protection.

V PROPERTY SHORTAGES

The amount of outstanding property shortages on June 30, 1936, amounted to approximately \$4,000.00 and this amount is being reduced as rapidly as possible.

VI TERRITORIAL PROPERTY

The inventory value of territorial property exclusive of buildings (including permanent fixtures), and grounds, in the hands of the Military Department, is approximately \$9,000.00.

VII CONSTRUCTION

The only construction undertaken by this office during the past year was the building of one officers' kitchen and mess building; two officers' latrines and bath houses and eight cess-pools and connections; all at the National Guard Camp site at Paukukalo, Maui. This was a Federal Public Works Project and the contract totaled \$8,560.00, the entire amount of which was borne by the Federal government.

5TH SECTION—TERRITORIAL STAFF

*Medical Section—Maj. F. L. Morong, M.C., S.S.,
Chief of Section*

Smallpox — Typhoid — Para-Typhoid Prophylaxis—The 298th Infantry reports complete immunization against Smallpox, Typhoid and Para-Typhoid. The widely scattered units of the 299th Infantry have made it difficult to obtain the necessary medical attention to completely immunize all personnel, but it is anticipated that inoculation will be completed by the time 1936 training camps open.

Health—The health of the personnel of the Hawaii National Guard has been excellent; as usual, and Federal expense on account of hospitalization for camp injuries and diseases has been kept at an unusually low mark. In regard to the expense to the United States for medical treatment for the Guardsmen, for the four year period ending December 31, 1935, Hawaii stood forty-seventh in the entire National Guard of all states and territories, with a per-capita expense of only \$.126, while the average per-capita expense for the entire Na-

tional Guard for hospitalization and medical attention was \$.342.

Health Conditions at Annual Encampments—During the two weeks training period of the 298th Infantry at Schofield Barracks, a total of five hundred and eighty-five (585) cases were treated at the regimental dispensary. Six cases were sent to the hospital, none of which were serious. One case of epilepsy developed and the soldier was discharged by surgeon's certificate of disability. There was one case of infectious disease, which appeared on the third day of camp, and the soldier was sent to his home. There were no casualties. In the 299th Infantry Camp at Paukukalo, Maui, the number of patients treated in the regimental dispensary was 537. Nine cases were sent to the hospital; none serious. There were no casualties.

Sanitation—The sanitary conditions of the 298th Infantry were excellent. This is a concurrent camp, and the maintenance of the facilities between camps is in the hands of the Regular Army authorities. The camp facilities are deteriorating and need more attention between camps. The sanitary conditions at the 299th Infantry permanent camp site at Paukukalo, Maui, are in satisfactory condition and are being improved each year. Sanitary conditions at armories and rifle ranges have been improved during the past year and are now in a satisfactory condition.

Equipment—New and adequate supplies and equipment for the Medical Departments of both regiments have been received and these units can now be furnished the necessary equipment for satisfactory field work.

Recommendations—The dispensary space at the permanent camp sites should be enlarged and toilet facilities increased.

*Inspector General's Section—Maj. H. L. Best, Inf.,
Chief of Section*

The Inspector General inspected the Territorial Detachment during its annual encampment at Fort Armstrong, and spent one week each with the 298th Infantry at Schofield Barracks, Oahu, and the 299th Infantry at Paukukalo, Maui. Suit-

able inspections and reports were rendered in each case.

Semi-annual audit of funds and accounts of the units of the Hawaii National Guard were made in September and March, and showed that the funds of the various organizations were in excellent condition.

Investigation and suitable recommendations were made on all applications for commissions in the Hawaii National Guard and the National Guard of the United States, and applications to take the examination for the United States Military Academy.

Training inspections were conducted during armory drill periods throughout the year.

The Inspector General made the annual territorial inspection of all units of the Hawaii National Guard, and found them to be satisfactory both as to performance and progress in training.

A number of investigations were made in cases where enlisted men were dropped from the rolls of various organizations as deserters. In many instances it was recommended that the charges of desertion be removed and the men so charged restored to duty.

More Federal and Territorial funds should be available in order that more and regular inspections may be made of the units on the outlying Islands. Especially is this so if new units are to be placed on the Islands of Kauai and Molokai.

*Judge Advocate General's Section—Capt. Earl R. McGhee,
J.A.G.D.,
Chief of Section*

There were no cases requiring court-martial in the Hawaii National Guard during the past year.

The Judge Advocate General delivered a series of lectures to all units of the Hawaii National Guard, on various subjects including the duties of Guardsmen during civil and other disorders, and the rules of land warfare. Plans are under way for the inauguration of a correspondence course on courts-martial procedure, military laws, etc., during the coming year.

Owing to pressing personal affairs it was necessary for the

Judge Advocate General to postpone completion of many worthwhile projects.

*Ordnance Section—Maj. Francis Xavier, Ord. Dept., S.S.,
Chief of Section*

Armament—The following is a list of armament of the Hawaii National Guard as of June 30, 1936:

Guns, Field, M/1902, 3"	4
Guns, 37 M/M	13
Guns, Browning, Machine, Cal. .30	84
Guns, Browning, Machine, Cal. .22	4
Mortars, 3" Stokes	8
Rifles, Auto., Cal. .30	135
Rifles, U.S., Cal. .30, M/1903	858
Rifles, U.S., Cal. .22, M/1922	57
Pistols, Auto., Cal. .45, M/1911	729
Bayonets, M/1905	1,312

One rifle, auto., Cal. .30; ninety-one rifles, U.S., Cal. .30, M/1903, and one pistol, automatic, cal. .45, M/1911, were declared unserviceable by the Ordnance Officer, Hawaiian Department, during this fiscal year, and shipped to the Hawaiian Ordnance Depot, Honolulu, for disposition.

Four .22 cal. machine guns were received and distributed, one to each machine gun company. It was contemplated that in the future all machine gun instruction and qualification firing would be with the .22 Cal. gun, and orders were issued by the National Guard Bureau that this change would be effective during the 1936 target practice season. However, it was discovered that ammunition of certain types and makes only would function properly in the machine gun, and, as there was no ammunition of the required types and makes available for issue to the Hawaii National Guard, permission was obtained to continue instruction with the caliber .30 machine gun.

Ammunition—The approximate amount of ammunition expended by the Hawaii National Guard during the fiscal year ending June 30, 1936, for target practice, both for record and instruction firing and for field problems, is as follows:

Cartridges, ball, Cal. .30, for Rifle, Automatic Rifle and Machine Gun	246,637
Shells, L.E., for 37 M/M Gun	532
Shells, practice, 3" Stokes Mortar	66
Cartridges, Blank, 37 M/M for saluting purposes	60
Grenades, hand, C.M. (tear gas)	146
Candles, Smoke, HC M1	150
Cartridges, Ball, Cal. 22, L.R.	225,300
Cartridges, Tracers, Cal. .30	4,250

6TH SECTION—MISCELLANEOUS

REPORT OF ARMORY BOARD

RECEIPTS

Dates	Honolulu Armory	Hilo Armory	Lahaina Armory	Wailuku Armory	Olaa Res.	Iolani Bks.	Total
Symbol No.	S-2603	S-2606	S-2604	S-2605	S-2610	S-2616	
Balances on hand							
June 30, 1935 \$	693.04	\$270.87	\$441.86	\$ 14.46	\$ 9.20	\$ 10.00	\$1,439.43
July	220.00	10.90	7.50	82.49	320.89
August	177.50	98.00	32.00	16.00	4.00	327.50
September ..	275.00	8.00	283.00
October	160.00	15.00	175.00
November	328.00	38.50	16.00	382.50
December	475.00	45.00	24.00	8.00	552.00
January	182.50	48.50	32.00	8.00	23.50	294.00
February	147.50	42.50	33.00	8.00	231.00
March	150.00	26.50	8.00	2.50	187.00
April	260.00	41.00	8.00	8.00	317.00
May	212.50	47.00	8.00	267.50
June	132.50	2.00	134.50
Tot. Collect'ns	\$2,720.50	\$412.90	\$138.50	\$ 88.00	\$ 4.00	\$107.99	\$3,471.89
Grand Total	\$3,413.54	\$683.77	\$580.36	\$102.46	\$13.20	\$117.99	\$4,911.32

EXPENDITURES

Dates	Honolulu Armory	Hilo Armory	Lahaina Armory	Wailuku Armory	Olaa Res.	Iolani Bks.	Total
July	493.98	43.30	8.80	546.08
August	308.10	7.55	17.87	335.52
September	339.74	1.50	341.24
October	4.50	26.28	13.35	44.13
November	203.98	21.00	224.98
December	143.49	60.21	48.30	252.00

January	34.50	34.50
February	254.87	25.00	25.60	2.40	53.07	360.94
March	131.79	78.89	33.70	11.08	255.46
April	104.91	8.13	113.04
May	100.84	17.83	263.38	382.05
June	203.04	203.04
<hr/>							
Tot. Disb'rs'mnts.	\$2,319.24	\$245.41	\$381.43	\$49.45	\$95.45	\$3,090.98
Balance on hand in each of the Armory Board Funds as of							
June 30, 1936\$1,094.30	\$438.36	\$198.93	\$53.01	\$13.20	\$22.54	\$1,820.34

ARMORIES

The six (6) armories owned by the Military Department, Territory of Hawaii, are as follows:

Honolulu, Oahu—Two. Honolulu Armory, main construction concrete, in good condition. Erected in 1915. Iolani Barracks, main construction coral rock, in good condition. Conveyed to the Military Department by Executive Order No. 613, February 28, 1934. This is the oldest armory in the Territory. Extensive repairs were made to these armories in 1936.

Hilo, Hawaii—One. Main construction concrete and hollow tile. Erected in 1931. This armory is in good condition.

Honolulu, Hawaii—One. Main construction frame, in good condition.

Wailuku, Maui—One. Main construction frame, in poor condition. Plans are under way for the construction of a new armory at Wailuku.

Lahaina, Maui—One. Main construction frame, in good condition. Extensive repairs and improvements were made to this armory during the past year, and it now affords excellent training facilities.

Two (2) armories are loaned to the Territory of Hawaii, as follows:

Paia, Maui—One. Main construction frame, in good condition. Owned by the Maui Agricultural Company. Houses Company C, 299th Infantry.

Papaikou, Hawaii.—One. Main construction frame, in good condition. Owned by the Onomea Sugar Company. Houses Company E, 299th Infantry.

One (1) armory leased to the Territory of Hawaii, viz:

Olaa, Hawaii.—One. Main construction frame, in poor condition. Property of the Olaa Sugar Company. Houses Company G, 299th Infantry.

All armories are now equipped with concrete or iron strong rooms, or vaults, for the safe storage of arms and ammunition. Extensive repairs were made to most of the armories during the past year. In particular, Lahaina Armory has been repaired and improved until it now affords excellent training facilities. In the Honolulu Armory alterations were made to afford office and storage space for the U.S.P.&D.O. The Territorial Armories are available for civic functions, etc., and are in constant demand.

Attention is invited to the fact that the Honolulu Armory is over-crowded and does not afford adequate training facilities for the troops stationed therein. In addition to the 298th Infantry, the Honolulu Armory now houses The Adjutant General's Office, the office and storerooms of the U.S.P.&D.O., and the Regular Army personnel in charge of National Guard and Civilian components. The Honolulu Armory should be enlarged so as to properly house all units of the 298th Infantry and an additional building, or suitable quarters provided for the housing of The Adjutant General's Office, National Guard Headquarters, Finance & Supply Officer and stock rooms and the Territorial Staff and Detachment.

TARGET RANGES

Target ranges operating under the control of this department are as follows:

Punchbowl, Island of Oahu.—Rifle, 200 and 300 yards, 14 targets; Machine Gun, 1000-inch, 6 targets. Small bore, (.22 cal.) 50 feet, 24 targets. This range and all other ranges in the Territory are open practically throughout the year, although funds for the payment of caretakers are provided for only four months a year. This range is in constant use, including Sundays and holidays, by the Hawaii National Guard, and

also by detachments of the Regular Army, the United States Navy, Coast Guard, Police Department, Oahu Prison Guards, Civilian Rifle Clubs, and unattached civilians. The facilities offered at the small-bore range are highly appreciated by the civilian rifle clubs, and the interest in small-bore shooting has increased appreciably during the past year. The Punchbowl range cannot be expanded to meet all requirements of the various units of the National Guard stationed in Honolulu, and the various other organizations which desire to use it, and additional facilities must be developed elsewhere. Eventually the Hawaii National Guard will be forced to abandon this area as a target range.

Kaliouou, Island of Oahu—Rifle, 200 yards; 14 targets. This range was completed in 1934. In order to care for all the units which must be accommodated, this range must be developed to permit the installation of additional firing points, a 300 yard range, and ranges for pistol, trench mortar and 37 MM guns.

Lahaina, Island of Maui—Rifle, 200 yards, 3 targets. This range is in good condition and meets the requirements of Company "A" 299th Infantry, stationed in Lahaina.

Paukukalo, Island of Maui—Rifle, 1 pit, 6 targets, firing line echeloned for 200 and 300 yards. Machine gun, 1000 inch, 14 targets. This range has been improved considerably during the past year, using FERA labor. The capacity of the machine gun range was doubled by utilizing the pistol range, and an adequate small-bore range was constructed for .22 Caliber instruction practice.

Waiakea, Island of Hawaii—Rifle, 200 and 300 yards, 6 targets each. Echeloned to permit firing at 500 and 600 yards. Pistol and machine gun, 1000-inch course, 4 targets. This range is in fair condition. It serves five companies and a battalion headquarters company.

Olaa, Island of Hawaii—Rifle, 2 targets at 200 yards. This range is not in satisfactory condition, and the members of Company "G" 299th Infantry, stationed at that place are compelled to use the range at Waiakea.

If new Infantry companies are to be located on the Islands of Kauai and Molokai, target ranges will be needed on those Islands, and funds should be provided for erection of same.

The War Department and the National Guard Bureau are constantly stressing the need for more diversified training with Infantry weapons, and steps must be taken to provide adequate range facilities to meet their demands.

HISTORICAL

A history of the Hawaii National Guard was written during 1934-1935, by 2nd Lieutenant Charles L. Warfield, QM-Res., and published by this headquarters in January, 1936. It is a very comprehensive work and relates the military history of the Hawaiian peoples back to the early days before King Kamehameha I.

The completion of this history of the Hawaii National Guard enabled the 298th and 299th Infantries to submit their histories to the War Department together with applications for the approval of regimental coats of arms and insignia. These were approved by the War Department, and are as follows:

The coat of arms for the 298th Infantry is as follows:



SHIELD: Per fess argent and azure, in chief a representation of Diamond Head sable, issuant in base a Hawaiian Warrior holding in dexter hand a war spear palewise extending overall into chief proper (yellow feather cloak with black crescents, red feather helmet, black spear).

CREST: That for the regiments of the National Guard of the Territory of Hawaii: On a wreath argent and azure a dolphin embowed hauriant argent, in his mouth a key fesswise or.

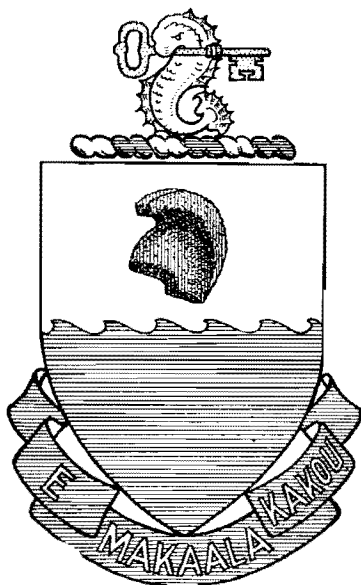
MOTTO: Makaukau Kakou (We are prepared).

DESCRIPTION: The 298th Infantry, Hawaii National Guard, was organized in 1893 as the 1st Regiment, National Guard of Hawaii, which participated in the "Rebellion of 1895." One important engagement of this rebellion in which one company of this National Guard regiment took part, occurred on Diamond Head.

The 1st Regiment, National Guard of Hawaii, was redesignated in 1907 as the 1st Regiment of Infantry; and on June 1, 1918 drafted into federal service; served in Hawaii during the World War and was disbanded at Fort Shafter, T. H., on July 30, 1919. The regiment was immediately reorganized as the 5th Infantry, National Guard of Hawaii and on October 1, 1919, was redesignated the 1st Infantry, National Guard of Hawaii. On August 20, 1923 it was again redesignated the 298th Infantry. The 298th Infantry is entitled to no battle honors.

The shield is white and blue for Infantry. Participation in the Hawaiian Rebellion of 1895 is indicated by Diamond Head, where one important engagement occurred. The Hawaiian warrior commemorates the ancient warrior, King Kamehameha, who founded the Hawaiian Kingdom.

The coat of arms for the 299th Infantry is as follows:



SHIELD: Per fess wavy argent and azure, in chief the feather war helmet of Kamehameha the Great gules.

CREST: That for the regiments of the National Guard of the Territory of Hawaii: On a wreath argent and azure a dolphin embowed hauriant argent, in his mouth a key fesswise or.

MOTTO: E Makaala Kakou (Let's be Alert).

DESCRIPTION: The 299th Infantry, Hawaii National Guard was originally organized October 12, 1915, as the 2nd Regiment, Hawaiian Infantry, National Guard. On July 1, 1917, the 3rd and 4th Regiments and the 1st Separate Company, Hawaiian Infantry, were consolidated with it, retaining the designation of the 2nd Regiment.

The 2nd Regiment, Hawaiian Infantry, National Guard, was mustered into Federal service during June, 1918; served in the Hawaiian Islands during the World War, and was mustered out on Feb. 14, 1919.

The regiment was reorganized on June 29, 1921, and on

August 20, 1923, it was redesignated the 299th Infantry, Hawaii National Guard.

The 299th Infantry, Hawaii National Guard, is entitled to no battle honors.

The shield is white and blue for infantry. The partition line suggests the ragged rough waves of the Pacific Ocean. The feather war helmet is a distinctive Hawaii charge.

Each regiment is authorized distinctive insignia, consisting of a representation of its coat of arms made as a badge to be worn by all members of the regiment, as follows:

The insignia is the coat of arms of the regiment. It will be manufactured in bright metal and enamel in one size, as the organization may select, but not in excess of $1\frac{1}{4}$ inches in height.

The coat of arms and regimental insignia for the 298th and 299th Infantries were designed by Captain Nash A. Witten, 299th Infantry.

UNITED STATES MILITARY ACADEMY

Private John Gabriel Redmon, Company E, 298th Infantry, was honorably discharged from the Hawaii National Guard to enter the United States Military Academy, July 1, 1936. His appointment was made through the Governor of Hawaii.

GOVERNOR'S AIDES

The military and naval aides to the Governor are listed in Appendix "A."

CONCLUSION

The past year has been an average one for the local Guard, there having been no changes of station of organizations; no increase in units or personnel; and the average number of newly commissioned officers, enlistments and reenlistments, resignations and discharges. It is expected the addition of one engineer officer on the Governor's Staff will be of much benefit to this headquarters in the plans, preparation and construction of new armories and military installations.

Owing to a more sympathetic and liberal attitude by the 18th Legislature in 1935, this Department has been able to more efficiently assist the various Guard companies in a ma-

terial manner. Particularly has this been a fact with the units stationed on the Islands of Maui and Hawaii.

Each year since the Hawaii National Guard reached an approximate strength of 1700, and which was in 1927, The Adjutant General has consistently pleaded to the Governors of Hawaii and its Legislators two major necessities of this Department. These requirements are adequate pay on an equal basis with other Federal, Territorial and City and County employees on similar work and duties, and a permanent increase in our administrative staff of two or more employees.

Just why the Territory should be content to handicap an employee who is engaged in military work is not understood by us. These workers are devoting the same, or greater, hours and energies to their duties in an efficient and conscientious manner as are other governmental employees, and are entitled to similar consideration as to remuneration. The requirements for military administration constitute a highly exacting profession and should receive consideration accordingly. The Territorial practice of having specialists of the Military Department classified with the usual civilian clerk is, to my mind, most unjust to the military employee. In view of this present situation, I urge Your Excellency to have the employees of this Department classified with those doing like duties with the United States Army and Navy.

The Secretary of War has notified the Governor of Hawaii that the local Guard will have an increase of at least four infantry companies during the calendar year 1937. The four regularly employed officials and clerks in this office are now thoroughly swamped with the constant demand on their time by the 29 units of the present Hawaii Guard, plus the continuous inquiries from other sources. From time to time we have been able to secure temporary typing assistance from Federal Relief agencies and while such assistance has been greatly appreciated, it has not been very satisfactory. At present all temporary employees of the Federal Emergency Relief Administration that were allotted to The Adjutant General's Office have been permanently withdrawn. With an addition of the four infantry companies to be recruited after the 1st of

1937, our Guard will be enlarged approximately 14%. It will be imperative that our administrative force be promptly increased if we are to properly direct a military organization of 2,000 officers and men. Specifically, I ask Your Excellency's cooperation in obtaining the required funds from the 1937 Session of the Territorial Legislature to add one official to fill the present vacancy of Plans and Training Officer, and one additional stenographer.

In order to properly protect the new Guard units to be recruited on the Islands of Kauai and Molokai, it will be necessary for the Territory to provide suitable armories. It is requested the Governor authorize the Treasurer of the Territory of Hawaii to immediately sell the required bonds to provide the funds for armories as specified in Act 203 of the 18th (1935) Session of the Legislature. The act quoted is one to provide funds for Public Improvements and the issuance of bonds after authorization by the Congress of the United States. The armory funds desired immediately are:

Item 8. National Guard Armory, Wailuku	\$50,000.00
Item 10. National Guard Armory, Molokai	8,000.00
Item 11. National Guard Armory, Kauai	20,000.00

The efficiency, loyalty and devotion to duty of the officers of our Guard and the employees in the Military Department are the real source of the present success of our organization. The cooperation of all Territorial officials, the interest of the local press and the kindly assistance and encouragement of Your Excellency are deeply appreciated by those of us who are constantly endeavoring to improve our Territorial Military Forces.

Respectfully,

P. M. SMOOT,

Colonel, Infantry,

The Adjutant General

will
y in-
on of
ney's
1937
to fill
l one

to be
e nec-
It is
Ter-
ds to
of the
is one
nce of
United

.00
.00
.00

fficers
rtment
zation.
of the
ment of
us who
l Mili-

General

APPENDIX

“A”

TWO HUNDRED AND NINETY-EIGHTH INFANTRY

Colonel WILHELM A. ANDERSEN, Commanding

Lieut. Col. WILLIAM HOOPAI, Executive

Captain Robert R. McEldowney, S-1 & 2. Major William S. Chillingworth, S-3

Captain Clarence J. Olds, S-4. Major Henry P. Judd, Chaplain

HEADQUARTERS COMPANY

Captain NOHEA O. A. PECK
2nd Lieut. KENNETH L. LOOK

MEDICAL DEPT. DETACHMENT

Major N. M. BENYAS, M.C.
Capt. ROBERT B. FAUS, M.C.
Capt. KING C. CHOCK, M.C.
Capt. RAYMOND F. KONG, M.C.
Capt. MORONI R. WOOLEY, D.C.

HEADQUARTERS 1st BATTALION

Major FARRANT L. TURNER

HEADQUARTERS CO., 1st BATTALION

1st Lieut. WARREN R. STARR
2nd Lieut. LAKE E. BELLINGER

COMPANY A

Capt. OLIVER H. KUPAU
1st Lieut. W. L. CHAMBERLAIN
2nd Lieut. James W. LOVELL

COMPANY B

Capt. JAMES T. M. CHANG
1st Lieut. JOSEPH K. KAPUA
2nd Lieut. S. K. CHILLINGWORTH

COMPANY C

Capt. JAMES HO YAP
1st Lieut. JAMES A. AI
2nd Lieut. HAROLD T. K. YAP

COMPANY D

1st Lieut. FRED O. YOUNG
1st Lieut. BERNARD N. FARDEN
2nd Lieut. ADOLPH J. MENDONCA

HOWITZER COMPANY

1st Lieut. EMMET L. O'CONNOR
1st Lieut. J. D. HITCHCOCK
2nd Lieut. A. L. MADDEN

SERVICE COMPANY

Capt. B. F. MODISETT
1st Lieut. W. H. TILLEY
1st Lieut. WM. Y. KELIINOI
2nd Lieut. F. A. BUTTERFIELD
W. O. G. F. NEILL (Band)

HEADQUARTERS 2nd BATTALION

Major PAUL B. PORTER

HEADQUARTERS CO., 2nd BATTALION

1st Lieut. PHILIP F. LINDEMAN
2nd Lieut. ROBERT L. STEVENSON

COMPANY E

Capt. CHARLES R. FRAZIER, JR.
1st Lieut. R. H. SMOOT
2nd Lieut. WM. R. CHILLINGWORTH

COMPANY F

Capt. JOHN C. SIMERSON
1st Lieut. A. H. CORNELISON
2nd Lieut. F. H. KANAHELE

COMPANY G

Capt. MARK O. CLEMENT
1st Lieut. DAVID P. KAHANAMOKU

COMPANY H

Capt. SAMUEL L. KEALA
1st Lieut. DANIEL H. LANSING
2nd Lieut. M. K. MAKEKAU

TWO HUNDRED AND NINETY-NINTH INFANTRY

Colonel GORDON C. ROSS, Commanding

Lieut. Colonel HAMILTON MERRILL, Executive

Captain Frederick R. Voorhees, S-1 & 2. Major Allen W. Smith, S-3.

Captain Nash A. Witten, Ass't S-3. Captain Robert F. Clarke, S-4.

1st Lieut. Albert H. Stone, Chaplain.

HEADQUARTERS COMPANY

Capt. GERALD F. BITTLE

HOWITZER COMPANY

1st Lieut. G. D. BECKER
1st Lieut. HERBERT U. KAI

SERVICE COMPANY

1st Lieut. W. C. POKA
 1st Lieut. G. W. TIVY
 2nd Lieut. C. J. GUARD
 2nd Lieut. J. P. KING
 W. O. JOHN UGRIN (Band)

HEADQUARTERS 1st BATTALION

Major ALVIN K. SILVA

HEADQUARTERS CO., 1st BATTALION

1st Lieut. CHARLES MILLER
 2nd Lieut. SAMUEL V. McGERROW

COMPANY A

Capt. FRANK A. ALAMEDA
 2nd Lieut. HAROLD L. DEPONTE
 2nd Lieut. JACK E. CONLEY

COMPANY B

1st Lieut. G. T. COOPER
 2nd Lieut. ANTHONY M. CABRINHA

COMPANY C

Capt. J. CRUICKSHANK
 1st Lieut. EMIL DAVIS
 2nd Lieut. JOHN F. CAIRES

COMPANY D

Capt. WM. McK. WHITMAN
 1st Lieut. HENRY VINCENT
 2nd Lieut. ALVIN T. STEENSRUD

MEDICAL DEPT. DETACHMENT

Major ARCHIE ORENSTEIN, M.C.
 Capt. ROBERT H. LEE, M.C., Wailuku
 1st Lieut. D. L. BURLINGAME, M.C.
 1st Lieut. MAX T. FINLAYSON, D.C.

HEADQUARTERS 2nd BATTALION

Major PETER N. PAKELE, JR.

HEADQUARTERS CO., 2nd BATTALION

1st Lieut. L. W. BRYAN
 2nd Lieut. CHARLES A. BRENAMAN

COMPANY E

Capt. CHARLES J. BENDA
 1st Lieut. E. J. CONDON
 2nd Lieut. A. H. CABRINHA

COMPANY F

Capt. CHARLES J. WARREN
 1st Lieut. FRED L. HARTMAN
 2nd Lieut. R. K. ELLIS

COMPANY G

Capt. EDMUND K. HOHU
 1st Lieut. A. CHAVES
 2nd Lieut. EMIL M. OSORIO

COMPANY H

Capt. E. F. EARL
 1st Lieut. D. W. LEGOULLON
 2nd Lieut. G. G. RICHARDSON

STATION DIRECTORY

STATION	UNIT	STATION COMMANDER
Honolulu, Oahu	Terr. (State) Staff & Detach., 298th Inf., Hq., Hq., Co., & Serv. Co., 299th Inf.	Colonel P. M. Smoot, Inf., The Adjutant General
Hilo, Hawaii	M.D.D., Hq. & Hq. Co., 2nd Bn., Cos. F & H, 299th Inf.	Major P. N. Pakele, Jr., 299th Inf.
Honomu, Hawaii	Howitzer Co., 299th Inf.	1st Lieut. G. D. Becker 299th Inf.
Papaikou, Hawaii	Company "E" 298th Inf.	Captain C. J. Benda, 299th Inf.
Olaa, Hawaii	Company "G" 299th Inf.	Captain E. K. Hohu, 299th Inf.
Wailuku, Maui	Hq. & Hq. Co., 1st Bn., Cos. B & D, 299th Inf.	Major Alvin K. Silva 299th Inf.
Lahaina, Maui	Company "A" 299th Inf.	Captain Frank A. Alameda 299th Inf.
Paia, Maui	Company "C" 299th Inf.	Captain J. Cruickshank 299th Inf.

TELEPHONE DIRECTORY

The Adjutant General's Office	4668
Office of The Adjutant General	4258
Headquarters 298th Infantry	4668
Headquarters 299th Infantry	4258
Headquarters 2nd Bn., 299th Infantry	2207 (Hilo)
Headquarters 1st Bn., 299th Infantry	2-W-134 (Wailuku)
Department National Guard Officer	2306 Local No. 23
Capt. Robert H. Knapp	3069
Headquarters Hawaiian Department	8531
Regular Armory Instructor, H.N.G.,	4748
U. S. P. & D. Officer & Territorial Quartermaster	3673
Punchbowl Target Range	3501

OFFICER'S DIRECTORY

Note: The first address given is the business address; the second, the residence address, numbers in parentheses indicate telephone numbers. Graduates of Army Schools are shown. The Asterisk (*) appearing before an Officer's name indicates that he has graduated from an Army Service School.

NAME	Rank and Assignments	Address and Phone
*AI, James A. Mrs. Ai	1st Lieut. Co. C, 298th Inf.	Hickman Field, Kam No. 2 4103 Maunaloa Ave., Hon.
ALAMEDA, Frank A. Mrs. Alameda	Capt. Co. A, 299th Inf.,	Deputy Assessor, Maui (2W894) Lahaina, Maui,
*ANDERSEN, Wilhelm A. Mrs. Andersen	Colonel, 298th Inf., Ass't The Adjutant General (Gr. The Inf. School, NG & Res. Field Off. Course 1931)	T. H. Davies & Co., Ltd., (3491), Ins. Dept., 3629 Mahina Ave. (7708) Honolulu, T. H.
ARAUJO, J. G. Mrs. Araujo	1st Lieut. Inf., (Inactive) 299th Inf.	Hawaiian Pineapple Co., (4931) Claudine Ave.
BACON, Herbert F. Mrs. Bacon	1st Lt. Eng. Corps, T. H.	Dept. Public Works, T. H. (2694) 1416-A Lunalilo (1043)
BECKER, George D. Mrs. Becker	1st Lt. How. Co. 299th Inf.	Hononu Sug. Co., (3W28) Hononu, Hawaii, T. H.
BELL, Alfred K. Mrs. Bell	Capt. Inf., (Inactive)	Kamuela, Hawaii (2W515)
BELLINGER, Lake E.	2nd Lt. Hq. Co. 1st Bn., 298th Inf.	Bishop National Bank of Hawaii, (4961) 3710 Mahina Ave. (7122)
*BENDA, Charles J. Mrs. Benda	Capt. Co. E 299th Inf., (Grad. the Chemical War- fare School, N.G. Line & Staff Officers Courses 1932)	Waiakea Mill Co., (2785) 810 Kilauea Ave. (2586) Waiakea, Hawaii
BENYAS, N. M. Mrs. Benyas	Major, Medical Corps, M.D.D., 298th Inf.	Alexander Young Building (2089) 2506 Upper Manoa Rd. (90608) Physician Ex. (98700)
*BEST, Henry L. Mrs. Best	Major, Inf., I.G.D., Terr. (State) Staff, (Grad. the Inf. Sch. N.G., & Res. Off. Course 1931)	American Factors Ltd., (1241) 4850 Kahala Rd. (78358), Hon. T. H.
BILLSBOROUGH, C. L. Mrs. Billsborough	Capt., Corps. of Engr. T.H.	3456 Keanu St., (7083) Honolulu, T. H.
BITTLE, Gerald F. Mrs. Bittle	Capt., Hqrs. Co. 299th Inf.	Libby, McNeill & Libby, (8553) 1520 Alewa Drive (88807)
BOLTON, Edward M. Mrs. Bolton	Major, A.G.D., Terr. (State) Staff, H.N.G.	Oahu Sugar Co., (2W92) 233 Managers Rd. (3W64) Waipahu, Oahu, T. H.

NAME	Rank and Assignments	Address and Phone
BRENAMAN, Charles J. Mrs. Brenaman	2nd Lt. Hq. Co., 2nd Bn., 299th Inf.	Hilo, Hawaii
BURLINGAME, Donald L. Mrs. Burlingame	1st Lt. M.C., 299th Inf.	Hilo, Hawaii
BRYAN, Lester W. Mrs. Bryan	1st Lt. Hq. Co., 2nd Bn., 299th Inf.	Board of Agriculture & Forestry (3189) Kilauea Av., Hilo, Hawaii (3180)
BUTTERFIELD, F. A. Mrs. Butterfield	2nd Lt. Service Co., 298th Inf.	Bishop National Bank of Hawaii (1424) Keaumoku St., Hon., T. H.
CABRINHA, Anthony M. Mrs. Cabrinha	2nd Lt. Co. "B", 299th Inf.	Von Hamm-Young, Wailuku, Maui
CABRINHA, August H. Mrs. Cabrinha	2nd Lt. Co. "E", 299th Inf.,	Engr. Office, County of Ha- wahi, P. O. Box 291, Hilo, Hawaii
CAIRES, John F. Mrs. Caires	2nd Lt. Co. C, 299th Inf.	Circuit Court, Wailuku, Maui, T. H. (2W428)
CARTER, Melville L. Mrs. Carter	Capt. Inf. (Inactive) 299th Inf.	Bishop National Bank of Hawaii (2133) Keaukaha St. (2041)
CHAMBERLAIN, W. L. Mrs. Chamberlain	1st Lt. Co. "A" 298th Inf.	O.R. & L. (Ranch) (2W67) McKinley St., Hon., T. H.
*CHANG, James T. M. Mrs. Chang	Capt. Inf. Co. "B" 298th Inf., (Grad. The Inf. Sch. N. G. & Res. Off. Co., Courses, 1933)	The Adjutant General's Office & Terr. QM (3673) 2156 Bingham St. (92001), Honolulu, T. H.
CHAVES, A. Mrs. Chaves	1st Lt. Co. "G" 299th Inf.	Hawn. Con. Railway, Ltd., Olaa, Hawaii, T. H.
CHILLINGWORTH, S. K.	2nd Lt. Co. "B" 298th Inf.	T. H. Davies & Co., Ltd., (3491), Ins. Dept., 2336 Oahu Av. (98042), Honolu- lu, T. H.
CHILLINGWORTH, W. S.	Major, S-3, 298th Inf.	1st Judicial Circuit Court (2146), Honolulu, T. H. 2336 Oahu Ave. (98042), Honolulu, T. H.
CHILLINGWORTH, W. R.	2nd Lt. Co. "E" 298th Inf.	Lewers & Cooke, Ltd., (1261), 2335 Oahu Ave. (98042), Honolulu, T. H.
CHOCK, King C. Mrs. Chock	Capt. M. C. Med. Dept., Detach, 298th Inf.	68 Vineyard St. (3491) 1440 Liholiho St. (5427) Phy. Ex. (98700), Hon. T. H.
CLARKE, Robert F. Mrs. Clarke	Capt. S-4, 299th Inf.	W. A. Ramsay, (2345) 1041 Lunalilo St. (3105), Honolulu, T. H.
CLEMENT, Mark O. Mrs. Clement	Capt. Co. "G" 298th Inf.	U.S.N. Air Base Laundry (O.P.H.) 717 Judd St. (5991), Honolulu, T. H.
CONDON, Edward J.	1st Lt. Co. "E" 299th Inf.	Hilo Iron Wks. (2151) Halealani Place, Hilo, Ha- wahi, T. H.
CONLEY, Jack E.	2nd Lt. Co. "A" 299th Inf.	Wailuku Sugar Co., Wailuku, Maui.
COOPER, George T. Mrs. Cooper	1st Lt. Co. "B" 299th Inf.	Engr. Dept. Maui County (2W260), Wailuku, Maui, T. H.
CORNELISON, Alex H. Mrs. Cornelison	1st Lt. Co. "F" 298th Inf.	Pacific Guano & Fertilizer Co., 1369-13th Ave. (78845)
CROSBY, L. E.	2nd Lt. (Inactive) 299th Inf.	Honolulu Plantation Co., Aiea, Oahu, (2W651)

NAME	Rank and Assignments	Address and Phone
CRUICKSHANK, James Mrs. Cruickshank	Capt. Co. "C" 299th Inf.	Haiku Pineapple Co., (2W617) Haiku, Maui, T. H. (2W515)
DAVIS, Emil	1st Lt. Co. "C" 299th Inf.	Maui Agricultural Co., (3W586) Haiku, Maui, T. H. 4W649
DEPONTE, Harold L.	2nd Lt. Co. "A" 299th Inf.	Sheriff Office, Wailuku, Maui (2W12), Wailuku, Maui, T. H. (2W450)
*deVILLE, Joseph I. Mrs. de Ville	Capt. F.D.S.S., HNG., U.S. P & D.O. (Grad. Inf. Sch., NG & Res. Co. Off. Course 1929)	The Adjutant General's Office (3673) 2391 Koa Av. (92869)
DUNHAM, Walter R. Mrs. Dunham	Lt. Col., Governor's Staff, T. H. Aide to the Governor	Office of the Secretary to the Governor (6321) 3264 Oahu Ave. (98500), Hon., T. H.
EARL, E. F.	Capt. Co. "H" 299th Inf.	Onomea Sugar Co., (2W20) Papaikou, Hawaii, T. H.
ELLIS, Richmond K. Mrs. Ellis	2nd Lt. Co. "F" 299th Inf.	Haw. Cane Products, Ltd. (2118) Laukapu St., Hilo, Hawaii, T. H.
FAIR, David R.	2nd Lt. (Inactive) 299th Inf.	The von Hammi-Young Co., Ltd., (AW297) Wahiawa, (2W240)
FARDEN, Bernard N. Mrs. Farden	1st Lt. Co. "D" 298th Inf.	Oahu Prison (8071) 711 Prospect St. (4451), Honolulu, T. H.
*FAUS, Robert B. Mrs. Faus	Capt. M.C., M.D.D., 298th Inf. (Grad. The Medical School Field Off., 1926)	Hawaiian Elect. Bldg., (3703) 311 Ferdinand (98505), Honolulu, T. H.
FINLAYSON, Max T. Mrs. Finlayson	1st Lt. M.C., D. 299th Inf.	Hilo, Hawaii
FLEMING, Bruce L.	2nd Lt. (Inactive) 299th Inf.	Baldwin Packers, Ltd., (2W874) Lahaina, Maui, T. H.
FRAZIER, C. R., JR. Mrs. Frazier	Capt. Co. "E" 298th Inf.	305-6-7, Stangenwald Bldg. (2049) 3804-D Mamalahoa Rd. (69037), Hon., T. H.
GUARD, Carl J. Mrs. Guard	2nd Lt. Serv. Co. 299th Inf.	Board of Water Supply (6161) 4750-A Kahala Ave. Honolulu, T. H.
HARKINS, Melvin A. Mrs. Harkins	2nd Lt. (Inactive) Inf.	U. of Tenn., Knoxville, Tenn.
*HARTMAN, Fred L. Mrs. Hartman	1st Lt. Co. "F" 299th Inf. (Grad. Signal Sch., 1931)	American Factors, Ltd., (2111) 408 Wailuku St. (2741), Hilo, Hawaii, T. H.
HILLIGER, Arthur C. Mrs. Hilliger	Capt. Inf. (Inactive) 299th Inf.	Broker, 925 Fort St. (1012) 2466 Oahu Ave. (98959) Honolulu, T. H.
HITCHCOCK, Joshua D. Mrs. Hitchcock	1st Lt. How. Co., 298th Inf.	W. A. Ramsay, Ltd., (2345) 1017-6th Ave., Hon., T. H.
HOHU, Edmund K. Mrs. Hoho	Capt. Co. "G" 299th Inf.	Olaa Sugar Co., (12W4) 143 Laukapu St. (2252) Hilo, Hawaii, T. H.
HOOPAI, William Mrs. Hoopai	Lt. Col. 298th Inf., Ex-Off.	Ass't Chief of Police (6231) 1941 Kealakai Av. (88864) Honolulu, T. H.
IGNACIO, Frank W. Mrs. Ignacio	1st Lt. (Inactive) 299th Inf.	Papaikou Grammar School, Papaikou, Hawaii, T. H.
JONES, Rolland I. Mrs. Jones	1st Lt. (Inactive) 298th Inf.	Rosenwald Bldg., Albu- querque, New Mexico.

NAME	Rank and Assignments	Address and Phone	
JUDD, Henry P. Mrs. Judd	Major (Chaplain) 298th Inf	University of Hawaii (9951) 2021 Kekela St. (98457), Honolulu, T. H.	M *P
KAHANAMOKU, D. P. Mrs. Kahanamoku	1st Lt. Co. "G" 298th Inf.	Kahanamoku's Haw'n Ex- change (92332), Seaside Hotel. C. W. Bartlett's Place, Manoa, Hon., T. H.	M *N
KAI, Herbert U. Mrs. Kai	1st Lt. How. Co., 299th Inf.	County Auditor's Office (2491) 418 Waiuanue Av. Hilo, Hawaii, T. H.	*N
KANAHELE, Francis H. Mrs. Kanahele	2nd Lt. Co. "F" 298th Inf.	Terr. Survey Office (6321) 123 Bates St., Hon., T. H.	N
KAPUA, Joseph K.	1st Lt. Co. "B" 298th Inf.	Oahu Prison, (8071) 3419 Kaau St. (79051)	N
KEALA, Samuel L. Mrs. Keala	Capt. Co. "H" 298th Inf.	Dept. Public Wks., T. H. (6321) 2121 Dole St., Hon., T. H.	N
KELIHOI, Wm. Y.	1st Lt. Service Co., 298th Inf.	Kuliouou, Oahu, T. H.	O
KING, John P. Mrs. King	2nd Lt. Serv. Co. 299th Inf.	Bureau of Crime, Stat. Bd. of Prison Directors (6231) 6th and Pahoa Ave., Hon., T. H.	*C
KONG, Raymond F. Mrs. Kong	Capt. M.C., M.D.D., 298th Inf.	1231 S. Beretania St. (3767) 2167 Ala Wai Blvd. (92163)	OB
*KUPAU, Oliver H. Mrs. Kupau	Capt. Co. "A" 298th Inf.	Pearl Harbor, Fleet Air Base, 2424 Rose St.	OS
LANE, Junius E. Mrs. Lane	2nd Lt. (Inactive) 299th Inf.	1010 Artesian St., Hon., T. H.	*P
LANSING, Dantel H. Mrs. Lansing	1st Lt. Co. "H" 298th Inf.	1865-C Elena Lane, Hon., T. H.	PE
LEE, Robert H. Mrs. Lee	Capt. M.C., M.D.D., 299th Inf.	Walluku, (2W69), Maui, T. H.	PC
LeGOULLON, Donald W. Mrs. LeGoullon	1st Lt. Co. "H" 299th Inf.	Onomea Sugar Co., (2W30) Papaikou, Hawaii, Box 140	PO
LINDEMAN, Phillip F. Mrs. Lindeman	1st Lt. Hqrs. Co. 2nd Bn., 298th Inf.	American Can Co., (3404) 431-A Olohana St. (92962)) Honolulu, T. H.	PO
LOOK, Kenneth L. Mrs. Look	2nd Lt. Hqrs. Co. 298th Inf.	Haw'n Electric Co., (3431) 1010 2nd Av., Hon., T. H. (79506)	RI
LOVELL, James W. Mrs. Lovell	2nd Lt. Co. "A" 298th Inf.	Roosevelt High School (5839), 1526 Hasting St., Honolulu, T. H., (2904)	*R
LYDGATE, E. P. Mrs. Lydgate	Capt. (Inactive) 299th Inf.	Maui Pineapple Co., (3W601) Pala, Maui, T. H. (4W605)	RO
MAKEKAU, Manase K. Mrs. Makekau	2nd Lt. Co. "H" 298th Inf.	Haw'n Pineapple Co., (4931) 2020 Kaunualii St., Honolulu, T. H.	SC
McELDOWNEY, Robert R.	Capt., S-1 & S-2, 298th Inf.	Haw'n Trust Ins. Dept. (1256) Nuuanu and Judd St., (3542)	*SI
McGERROW, Samuel V. Mrs. McGerrow	2nd Lt. Hq. Co. 1st Bn., 299th Inf.	Haleakala Motors (2W325) P. O. Box 633, Wailuku, Maui, T. H.	*SI
McGHEE, Earl R. Mrs. McGhee	Capt. J. A. D., Terr. Staff, H.N.G.	Arcade Building (5882) 2627-E Manoa Rd. (98044) Honolulu, T. H.	
McINERNY, George T. Mrs. McInerny	Capt. Inf. (Inactive).	648 Walea Place (4182) Honolulu, T. H.	

NAME	Rank and Assignments	Address and Phone
MENDONCA, Adolph H.	2nd Lt. Co. "D" 298th Inf.	2411 Rose St., Hon., T. H.
*MERRILL, Hamilton Mrs. Merrill	Lt. Col. Ex-Officer, 298th Grad. Command and Gen- eral Staff School	
MODISSETT, Benjamin F.	Capt., Ass't S-3, 298th Inf.	USATS, Pier No. 5, (2306- No. 9) Cotton Club Boston Bldg. (2481) 2554 Liliha St., Hon., T. H.
*MORONG, Frederic L. Mrs. Morong	Major, M.C., Terr. Staff. Grad. the Med. School, F. O. 1929.	
NATHANIEL, Daniel H. Mrs. Nathaniel	Capt. (Inactive) Inf., Co. "K" 299th Inf.	Terr. Tax Office. (2491) 117 Kaaue St., Hilo, Ha- wahi
NEILL, G. F. Mrs. Neill	W. O. (Band) 298th Inf.	Roosevelt School Army and Navy Y.M.C.A.
NICOLL, Melvin A. Mrs. Nicoll	2nd Lt. (Inactive) Co. "D"	644 So. Ridgeley, Los An- geles, California.
O'CONNOR, Emmet L. Mrs. O'Connor	1st Lt. How. Co., 298th Inf.	Liquor Insp. Off. (4735) Kailua, Oahu, T. H.
*OLDS, Clarence J. Mrs. Olds	Capt. S-4, 298th Inf., (Grad. The Inf. Sch. N.G. & Res. Off. Co. Course 1927)	Hi Estate (4703) Kalania- naole Highway, (78518) Honolulu, T. H.
ORENSTEIN, Archie Mrs. Orenstein	Major, M.C., M.D.D., 299th Inf.	Kinoole St. (2716) 309 Kauila St. (2849), Hilo, Hawaii, T. H.
OSORIO, Emil M. Mrs. Osorio	2nd Lt. Co. "G" 299th Inf.	Hilo Water Works, (2780) 674 Kinoole St. (3106) Hilo, Hawaii, T. H.
*PAKELE, Peter N., Jr. Mrs. Pakele	Major, C. O. 2nd Bn., 299th Inf. (Grad. Inf. Sch. N.G. & Res Off. 1926)	Deputy Sheriff (2776) Kawili St. (3179) Hilo, Ha- wahi, T. H.
PECK, Nohea O. A. Mrs. Peck	Capt. Hqrs. Co., 298th Inf.	U. S. Navy Yd. 3556 Mau- naloa Ave. (79411)
POINDEXTER, Joseph B. Miss Poindexter	Commander-in-Chief, HNG	Executive Chambers (6321), Washington Place (5037)
POKA, William C. Mrs. Poka	1st Lt. Serv. Co., 299th Inf.	W.P.A., 287 Kalihi St., Honolulu, T. H.
PORTER, Paul B. Mrs. Porter	Major, C.O. 2nd Bn., 298th Inf.	Patten Co., Ltd., (5741) 815-17th Av., Hon., T. H. (7549)
RICHARDSON, George G.	2nd Lt. Co. "H" 299th Inf.	Waiakea Mill Co., (2785) Kilauea Av. (3172), Hilo, Hawaii
*ROSS, Gordon C. Mrs. Ross	Col. C. O. 299th Inf. (Grad. Inf. School N.G. & Res. Off. Co. Course 1923)	C. Brewer & Co., (6261) 1238 Wilhelmina Rise (7259), Hon., T. H.
ROTHWELL, Guy N. Mrs. Rothwell	Commander, H.N.M., Gov- ernor's Staff. Alde-deCamp	Wright, Harvey & Wright (3005), Hillside Ave., Honolulu, T. H. (98611)
SCRUTON, Gordon H. Mrs. Scruton	1st Lt. (Inactive) Co. "K" 299th Inf.	Chamber of Commerce (2583) 413 Wainaku Ave. (2990), Hilo, Hawaii.
*SILVA, Alvin K. Mrs. Silva	Major, C.O., 1st Bn., 299th Inf., (Grad. The Inf. Sch. N. G. & Res. Off. Co. Course 1933)	Wailuku Sugar Co., (2W2), Wailuku, Maui, T. H. (3W206)
*SIMERSON, John C. Mrs. Simerson	Capt. Co. "F" 298th Inf., (Grad. The Inf. Sch. N.G. & Res. Off. Co. Course 1935)	Dept. of Public Inst. T. H., (6321) 216-C Liliuokalani Ave., Honolulu, T. H.

NAME	Rank and Assignments	Address and Phone
SMITH, Allen W. Mrs. Smith	Major, S-3 299th Inf., (Grad U.S. Mil. Academy 1923)	W. A. Ramsay Co., (2345) 4335 Royal Place (78441), Honolulu, T. H.
*SMOOT, Perry M. Mrs. Smoot	Col. Inf., The Adjutant General of Hawaii, & Chief of Staff (Grad. C. & G. S. Sch. 1926; Army War Col- lege G-1 & 2 Courses 1927; The Inf., Sch. N. G. & Res. Off. F. O. Course 1932)	The Adjutant General's Of- fice (4668) 820-15th Ave. (77894), Honolulu, T. H.
SMOOT, Richard H. Mrs. Smoot	1st Lt. Co. "E" 298th Inf.	Bank of Hawaii (5711) 958 12th Ave., (78814), Hono- lulu, T. H.
SMOOT, Robert M.	2nd Lt. Co. "G" 298th Inf.	University of Hawaii (9951) 820-15th Ave., (77894), Honolulu, T. H.
STARR, Warren R.	1st Lt. Hq. Co. 1st Bn., 298th Inf.	Lewers & Cooke, Ltd., (1265) 2347 University Ave., Honolulu, T. H.
STEENSRUD, Alvin T. Mrs. Steensrud	2nd Lt. Co. "D" 299th Inf.	Kahului Store, (2W108), Spreckelsville, Maui, T. H.
STEVENSON, Robert L.	2nd Lt. Hq. Co. 2nd Bn., 298th Inf.	3257 Kaimuki Ave., Honolulu, T. H.
STONE, Albert H. Mrs. Stone	1st Lt. (Chaplain) 299th Inf.	H'dmaster, Iolani School (4332) Nuuanu & Judd St. (65194), Honolulu, T. H.
TILLEY, William H.	1st Lt. Serv. Co., 298th Inf.	1st Cir. Court (4431) 1741 15th Ave., Hon., T. H. (73950)
TIVY, George W. Mrs. Tivy	1st Lt. Serv. Co., 299th Inf.	W. A. Ramsay, (2345), 28- A Hima (88911)
TURNER, Farrant L. Mrs. Turner	Major, C. O. Hq. 1st Bn., 298th Inf.	Lewers & Cooke, Ltd., (1261) 1054 Spencer St., (68820)
UGRIN, John	W. O. (Band), 299th Inf.	Army & Navy Y.M.C.A.
VINCENT, Henry Mrs. Vincent	1st Lt. Co. "D" 299th Inf.	C.P.C. (2W301), Kahului, Wailuku, Maui, T. H.
VIVAS, Louis M.	Capt. Q.M.C., Terr. Staff	Navy Yard, 1233-G, 1856-D Elana St., Honolulu, T. H. (88644)
*VOORHEES, Frederick Mrs. Voorhees	Capt., S-1 & 2, 299th Inf., (Grad. The Inf. Sch. N. G. & Res. Off. Co. Course 1936)	Matson Navigation Co., (2934) 2517 Upper Manoa Rd. (98513)
WAITE, Christopher C. Mrs. Waite	2nd Lt. (Inactive)	Hon. Rapid Transit Co. 914-16th Ave., Hon., T. H.
WARREN, Charles J. Mrs. Warren	Capt. Co. "F" 299th Inf.	Hilo Police Dept., Hilo, Hawaii
WHITMAN, Wm. McK. Mrs. Whitman	Capt. Co. "D" 299th Inf.	Wailuku Sugar Co., (2W2) Waihee, Maui, T. H. (2W372)
WITTEN, Nash A. Mrs. Witten	Capt. Ass't. S-3, 299th Inf.	Star-Bulletin (4911) 28-B Hima Drive (88817)
WONG, Gilbert L. H. Mrs. Wong	2nd Lt. (Inactive) Co. "M" 299th Inf.	Wailuku Elementary Sch. Box 271, Paia, Maui, T. H.
WOOLLEY, Moroni R. Mrs. Woolley	Capt. D.C., M.D.D., 298th Inf.	Young Building (5576) 2524 Oahu Ave. (98000), Honolulu, T. H.
WRIGHT, M. F. Mrs. Wright	2nd Lt. (Inactive) 298th Inf.	W. A. Ramsay (2345) 3137 Oahu Ave., Hon., T. H. (98618)

NAME	Rank and Assignments	Address and Phone
XAVIER, Francis Mrs. Xavier	Major, Ord. Dept., Terr. Staff	The Adjutant General's Office (4668), Punchbowl Reservation (3501), Honolulu, T. H.
YAP, Harold F. K. Mrs. Yap	2nd Lt. Co. "C" 298th Inf.	Commission Agent, 2135 Auli St. (88847)
YAP, James Ho Mrs. Yap	Capt. Co. "C" 298th Inf.	Schuman Carriage Co., (4975) 1314 Farrington St.
YOUNG, Fred O. Mrs. Young	1st Lt. Co. "D" 298th Inf.	U.S. Engr. Off. (P.W.A.) (5602) 2817 Tantalus Drive (5791)

Relative rank of Officers of the Hawaii National Guard, arranged according to the length of service in present appointment. (NGR 35) totals represent all commissioned service in all grades as counted for longevity purposes, computed to include October 1, 1936.

Rel. No.	Name	Date of Federal Recognition	Total Commissioned Service		
			Yr.	Mo.	Days
Colonels					
1.	Smoot, Perry M.	Oct. 11, 1923	24	3	17
2.	Andersen, Wilhelm A.	July 1, 1929	17	3	11
3.	Ross, Gordon C.	Feb. 6, 1934	16	6	0
Lieutenant Colonels					
1.	Hoopai, William	Jan. 15, 1925	18	1	18
2.	Merrill, Hamilton	May 22, 1934	13	0	9
Majors					
1.	Benyas, Nathan M.	July 16, 1922	17	10	12
2.	Chillingworth, Wm. S.	July 3, 1924	23	4	16
3.	Pakele, Peter N. Jr.,	Jan. 1, 1927	14	12	5
4.	Bolton, Edward M.	Oct. 18, 1927	18	3	8
5.	Morong, Frederic L.	Nov. 15, 1927	21	1	13
6.	Judd, Henry P.	May 25, 1928	16	11	16
7.	Turner, Farrant L.	Aug. 16, 1929	14	6	22
8.	Orenstein, Archie	Dec. 11, 1930	5	9	20
9.	Best, Henry L.	Oct. 1, 1931	14	8	21
10.	Porter, Paul B.	April 18, 1934	12	9	4
11.	Smith, Allen W.	May 7, 1934	13	0	5
12.	Xavier, Francis	Jan. 9, 1935	14	8	0
13.	Silva, Alvin K.	Feb. 11, 1935	10	11	21
Captains					
1.	Yap, James Ho	Sept. 14, 1920	20	0	27
2.	Faus, Robert B.	Sept. 16, 1925	14	3	16
3.	Kupau, Oliver H.	Nov. 1, 1926	14	1	1
4.	Olds, Clarence J.	Nov. 15, 1926	15	7	13
5.	Hohu, Edmund K.	Jan. 1, 1927	13	5	12
6.	Warren, Charles J.	April 25, 1927	10	4	14
7.	Benda, Charles J.	Sept. 3, 1929	9	0	29
8.	McEldowney, Robert R.	Dec. 17, 1929	15	2	18
9.	Chock, King C.	April 4, 1930	8	7	12
10.	Kong, Raymond F.	April 4, 1930	8	7	12
11.	Lee, Robert H.	April 15, 1930	7	5	17
12.	Chang, James T. M.	May 6, 1930	11	6	0
13.	Simerson, John C.	May 7, 1931	8	8	23
14.	McGhee, Earl R.	Sept. 1, 1931	10	10	14

Rel. No.	Name	Date of Federal Recognition	Total Commissioned Service		
			Yr.	Mo.	Days
Captains					
15.	Clement, Mark O.	Jan. 1, 1932	8	5	17
16.	Modisett, Benjamin F.	Jan. 1, 1933	8	3	6
17.	Vivas, Louis M.	April 15, 1933	11	6	0
18.	Woolley, Moroni R.	Jan. 1, 1934	3	11	0
19.	Bittle, Gerald F.	May 1, 1934	10	1	23
20.	Clarke, Robert F.	May 2, 1934	4	0	29
21.	Frazier, Charles R. Jr.	Jan. 1, 1935	7	2	25
22.	Witten, Nash A.	Mar. 4, 1935	10	8	12
23.	Voorhees, Frederick T.	Mar. 4, 1935	6	7	22
24.	Whitman, Wm. McK.	Mar. 6, 1935	5	3	29
25.	Earl, Ewin F.	April 3, 1935	8	12	27
26.	deVille, Joseph I.	Jan. 1, 1936	9	3	22
27.	Keala, Samuel L.	April 10, 1936	9	1	20
28.	Peck, Nohea O. A.	April 10, 1936	8	7	4
29.	Alameda, Frank A.	July 1, 1936	4	3	28
30.	Cruikshank, James	July 1, 1936	6	8	15
First Lieutenants					
1.	Kahanamoku, David P.	Nov. 9, 1927	13	1	11
2.	Hartman, Fred L.	Aug. 1, 1928	9	0	29
3.	Kai, Herbert U.	Sept. 12, 1929	9	9	29
4.	Poka, William C.	Dec. 17, 1929	9	7	1
5.	Ai, James A.	May 7, 1930	8	8	25
6.	Keliinoi, William Y.	May 15, 1930	9	2	29
7.	O'Connor, Emmet L.	Feb. 17, 1931	6	11	6
8.	Tilley, William H.	March 18, 1931	10	7	3
9.	Chaves, Alverinos	Aug. 4, 1931	10	8	29
19.	Lansing, Daniel H.	Jan. 1, 1932	6	10	28
11.	Cornelison, Alex H.	Jan. 1, 1933	8	11	16
12.	Becker, George D.	Aug. 2, 1933	5	6	11
13.	LeGoullon, Donald W.	Oct. 2, 1933	5	3	7
14.	Cooper, George T.	Nov. 11, 1933	6	0	9
15.	Lindeman, Philip F.	Jan. 1, 1934	5	7	27
16.	Stone, Albert H.	Mar. 12, 1934	4	1	15
17.	Vincent, Henry	April 2, 1934	13	3	4
18.	Smoot, Richard H.	Jan. 1, 1935	4	9	0
19.	Tivy, George W.	May 10, 1935	3	3	0
20.	Kapua, Joseph K.	June 12, 1935	5	5	0
21.	Chamberlain, Warren L.	June 12, 1935	3	7	28
22.	Starr, Warren R.	June 12, 1935	3	4	28
23.	Young, Fred O.	July 11, 1935	7	10	2
24.	Farden, Bernard N.	Oct. 16, 1935	7	2	1
25.	Hitchcock, Joshua D.	Dec. 2, 1935	3	8	29
26.	Condon, Edward J.	Feb. 1, 1936	3	10	0
27.	Bryan, Lester W.	Feb. 1, 1936	3	5	8
28.	Burlingame, Donald L.	April 1, 1936	0	6	0
29.	Finlayson, Max Theobald	April 1, 1936	0	6	0
30.	Davis, Emil	July 1, 1936	3	0	29
31.	Miller, Charles	July 1, 1936	4	9	9
Second Lieutenants					
1.	Makekau, Manase K.	April 15, 1930	6	5	27
2.	Ellis, Richmond K.	May 2, 1933	3	4	29
3.	Richardson, George C.	May 23, 1933	3	4	8
4.	Kanahele, Francis H.	Dec. 2, 1933	2	10	29
5.	Brenaman, Charles A.	Jan. 15, 1934	4	1	22
6.	Guard, Carl J.	May 2, 1934	3	10	23
7.	King, John P.	May 2, 1934	3	10	0
8.	Chillingworth, Selden K.	June 9, 1934	2	3	24

Rel. Rel.		Date of Federal Recognition	Total Commissioned Service		
			Yr.	Mo.	Days
Second Lieutenants					
9.	Caires, John F.	June 9, 1934	2	3	24
10.	Oserio, Emil M.	July 7, 1934	5	9	21
11.	Cabrinha, A. H.	July 7, 1934	5	9	15
12.	Butterfield, Frank A.	Nov. 2, 1934	1	10	28
13.	Bellinger, Lake E.	Jan. 3, 1935	1	8	27
14.	McGerrow, Samuel V.	Jan. 16, 1935	1	8	14
15.	Steenrud, Alvin T.	April 25, 1935	1	5	7
16.	Lovell, James W.	May 10, 1935	1	4	21
17.	Look, Kenneth L.	May 10, 1935	1	4	21
18.	Mendonca, Adolph J.	Oct. 10, 1935	0	11	20
19.	Chillingworth, Wm. R.	Nov. 5, 1935	0	10	25
20.	Deponce, Harold L.	March 5, 1936	0	6	25
21.	Yap, Harold T. K.	April 10, 1936	0	5	10
22.	Stevenson, Robert L.	June 24, 1936	0	3	6
23.	Cabrinha, Anthony M.	July 1, 1936	0	3	0
24.	Conley, Jack E.	July 1, 1936	0	3	0
25.	Smoot, Robert M.	Oct. 1, 1936	0	0	0

RELATIVE RANK OF OFFICERS OF THE HAWAII NATIONAL GUARD,

arranged according to length of service and active Federal Duty Status in accordance with the provisions of M. B. Circular No. 7-A, dated March 1, 1928.

Rel. No.	Name		Total Active Service in Grade		
			Yr.	Mo.	Days
Colonels					
1.	Smoot, Perry M.	Infantry	1	7	22
2.	Andersen, Wilhelm A.	298th Infantry	0	6	13
3.	Ross, Gordon C.	299th Infantry	0	0	19
Lieutenant Colonels					
1.	Hoopai, William	298th Infantry	0	5	21
2.	Merrill, Hamilton	299th Infantry	0	5	11
Majors					
1.	Benyas, Nathan A.	Medical Corps	2	8	16
2.	Chillingworth, William S.	298th Infantry	0	11	0
3.	Morong, Frederic L.	Medical Corps	0	6	23
4.	Pakele, Peter N., Jr.	299th Infantry	0	5	3
5.	Bolton, Edward M.	Adj. Gen. Dept.	0	6	1
6.	Judd, Henry P.	Chaplain	0	4	0
7.	Turner, Farrant L.	298th Infantry	0	3	24
8.	Orenstein, Archie	Medical Corps	0	2	16
9.	Best, Henry L.	Infantry (I.G.D.)	0	2	15
10.	Porter, Paul B.	298th Infantry	0	1	15
11.	Smith, Allen W.	299th Infantry	0	1	0
12.	Xavier, Francis	Ord. Dept., H.N.G.	0	1	0
13.	Silva, Alvin K.	299th Infantry	0	1	0
Captains					
1.	Simerson, John C.	298th Infantry	1	1	28
2.	Yap, James Ho	298th Infantry	1	0	1
3.	Kupau, Oliver H.	298th Infantry	0	11	13
4.	Olds, Clarence J.	298th Infantry	0	10	14
5.	Warren, Charles J.	299th Infantry	0	8	12
6.	Hohu, Edmund K.	299th Infantry	0	8	0

Rel. No.	Name	Date of Federal Recognition	Total Commissioned Service		
			Yr.	Mo.	Days
Captains					
7.	Chang, James T. M.	298th Infantry	0	7	13
8.	Benda, Charles J.	299th Infantry	0	7	4
9.	Faus, Robert B.	Medical Corps	0	6	3
10.	deVille, Joseph I.	F.D. (H.N.G.)	0	5	7
11.	Voorhees, F. T.	299th Infantry	0	4	26
12.	McEldowney, Robert R.	298th Infantry	0	3	24
13.	Chock, King C.	Medical Corps	0	3	15
14.	Kong, Raymond F.	Medical Corps	0	3	15
15.	Lee, Robert H.	Medical Corps	0	3	15
16.	McGhee, Earl R.	J.A.D., (H.N.G.)	0	3	0
17.	Clement, Mark O.	298th Infantry	0	2	24
18.	Vivas, Louis M.	Qmstr. Corps	0	2	20
19.	Bittle, Gerald F.	299th Infantry	0	2	18
20.	Modisett, Benjamin F.	298th Infantry	0	2	0
21.	Woolley, Moroni R.	Dental Corps	0	1	15
22.	Clarke, Robert F.	299th Infantry	0	1	15
23.	Frazier, Charles R. Jr.,	298th Infantry	0	1	0
24.	Earl, E. F.	299th Infantry	0	1	0
25.	Witten, Nash A.	299th Infantry	0	1	0
26.	Whitman, Wm. McK.	299th Infantry	0	1	0
27.	Keala, Samuel L.	298th Infantry	0	0	15
28.	Peck, Nohea O. A.	298th Infantry	0	0	15
29.	Alameda, Frank A.	299th Infantry	0	0	15
30.	Cruickshank, James	299th Infantry	0	0	15

First Lieutenants

1.	Vincent, Henry	298th Infantry	2	4	6
2.	Stone, Albert H.	Chaplain	1	11	6
3.	Hartman, Fred L.	299th Infantry	0	8	20
4.	Tilley, William H.	298th Infantry	0	4	28
5.	Poka, William	299th Infantry	0	4	1
6.	Kahanamoku, David P.	298th Infantry	0	4	0
7.	Kai, Herbert U.	299th Infantry	0	4	0
8.	Ai, James A.	298th Infantry	0	3	16
9.	Kelii noi, William Y.	298th Infantry	0	3	15
10.	O'Connor, Emmet L.	298th Infantry	0	3	0
11.	Chaves, Alverines	299th Infantry	0	3	0
12.	Lansing, Daniel H.	298th Infantry	0	2	15
13.	Cornelison, Alex H.	298th Infantry	0	2	0
14.	Becker, George D.	299th Infantry	0	1	15
15.	LeGoulion, Donald W.	299th Infantry	0	1	15
16.	Cooper, George T.	299th Infantry	0	1	15
17.	Lindeman, Philip F.	298th Infantry	0	1	0
18.	Smoot, Richard H.	298th Infantry	0	1	0
19.	Tivy, George W.	299th Infantry	0	1	0
20.	Young, Fred O.	298th Infantry	0	1	0
21.	Kapua, Joseph K.	298th Infantry	0	1	0
22.	Chamberlain, Warren L.	298th Infantry	0	1	0
23.	Starr, Warren R.	298th Infantry	0	1	0
24.	Farden, Bernard N.	298th Infantry	0	0	15
25.	Hitchcock, Joshua D.	298th Infantry	0	0	15
26.	Bryan, Lester W.	299th Infantry	0	0	15
27.	Burlingame, Donald L.	Medical Corps	0	0	15
28.	Miller, Charles	299th Infantry	0	0	15
29.	Davis, Emil	299th Infantry	0	0	15
30.	Condon, Edward J.	299th Infantry	0	0	0
31.	Finlayson, Max Theobald	Medical Corps. (D)	0	0	0

Rel. No.	Name		Total Commissioned Active Service in Grade		
			Yr.	Mo.	Days
Second Lieutenants					
1.	Makekau, Manase K.	298th Infantry	0	3	0
2.	Richardson, George G.	299th Infantry	0	2	0
3.	King, John P.	299th Infantry	0	1	22
4.	Guard, Carl J.	299th Infantry	0	1	22
5.	Ellis, Richmond K.	299th Infantry	0	1	15
6.	Kanahele, Francis H.	298th Infantry	0	1	15
7.	Brenaman, Charles A.	299th Infantry	0	1	15
8.	Osorio, Emil M.	299th Infantry	0	1	15
9.	Cabrinha, A. H.	299th Infantry	0	1	15
10.	Chillingworth, Selden K.	298th Infantry	0	1	0
11.	Caires, John F.	298th Infantry	0	1	0
12.	Butterfield, Frank A.	298th Infantry	0	1	0
13.	Bellinger, Lake E.	298th Infantry	0	1	0
14.	McGerrow, Samuel V.	299th Infantry	0	1	0
15.	Steensrud, Alvin R.	299th Infantry	0	1	0
16.	Lovell, James W.	298th Infantry	0	1	0
17.	Look, Kenneth L.	298th Infantry	0	1	0
18.	Deponite, Harold L.	299th Infantry	0	0	15
19.	Yap, Harold T. K.	298th Infantry	0	0	15
20.	Stevenson, Robert L.	298th Infantry	0	0	15
21.	Cabrinha, Anthony M.	299th Infantry	0	0	15
22.	Conley, Jack E.	299th Infantry	0	0	15
23.	Smoot, Robert M.	298th Infantry	0	0	0
24.	Mendonca, Adolph J.	298th Infantry	0	0	0
25.	Chillingworth, Wm. R.	298th Infantry	0	0	0

OFFICERS, INACTIVE NATIONAL GUARD OF U. S.

Rank	Name	Assignment
Captain	Carter, Melville L.	Company "I" 299th Infantry
Captain	Bell, Alfred K.	Ass't S-2, 299th Infantry
Captain	Hilliger, Arthur C.	Ass't S-2, 298th Infantry
Captain	Melnerny, George T.	Company "M" 299th Infantry
Captain	Lydgate, E. P.	
Captain	Nathaniel, Daniel H.	Company "K" 299th Infantry
1st Lieut.	Ignacio, Frank W.	Company "I" 299th Infantry
1st Lieut.	Scruton, Gordon H.	Company "K" 299th Infantry
1st Lieut.	Araujo, J. G.	Company "L" 299th Infantry
1st Lieut.	Jones, Rolland I.	Company "M" 298th Infantry
2nd Lieut.	Harkins, Melvin A.	Company "E" 298th Infantry
2nd Lieut.	Nicoll, Melvin A.	Company "D" 298th Infantry
2nd Lieut.	Fleming, Bruce L.	Company "I" 299th Infantry
2nd Lieut.	Fair, John R.	Service Co., 298th Infantry
2nd Lieut.	Crosby, Leonard W.	Company "K" 299th Infantry
2nd Lieut.	Lane, Junius E.	Company "J" 299th Infantry
2nd Lieut.	Waite, Christopher	Hq. Co., 3rd Bn., 299th Inf.
2nd Lieut.	Wong, Gilbert L. H.	Company "M" 299th Infantry
2nd Lieut.	Wright, Marshall F.	Company "G" 298th Infantry

ENLISTED PERSONNEL HOLDING COMMISSION IN THE NATIONAL GUARD OF THE U. S. ASSIGNED TO WAR STRENGTH VACANCIES

Rank	Name	Assignment
Mr. Sgt.	Aiona, John K.	Hqrs. Co., 298th Infantry
Sergeant	Kealoha, Joseph G.	Company "F" 298th Infantry
Sergeant	Sakai, Hiroi P.	Company "G" 298th Infantry
Mr. Sgt.	Jacobs, James L.	Hqrs. Co., 299th Infantry
Corporal	Lau, Paul K.	Company "A" 298th Infantry
Corporal	Mendonca, Hercules S.	Company "A" 298th Infantry

TERRITORIAL COMMISSIONED OFFICERS

Rank	Name	Assignment
Lieut. Colonel	Dunham, Walter R.	Aide-de-Camp
Major	Searle, John W.	Infantry
Captain	Medeiros, Louis R.	Infantry
Captain	Billsborough, Charles L.	Corps of Engineers
Captain	Gross, Andrew	Chaplain
1st Lieut.	Bacon, Herbert Francis	Corps of Engineers

TERRITORIAL NAVAL MILITIA

Commander	Rothwell, Guy N.	Aide-de-Camp
-----------	------------------	--------------

RETIRED LIST

Rank	Name
Brigadier General	Soper, John H.
Colonel	Jones, John W.
Lieut. Colonel	Baron, Pierre
Major	Coster, Charles M.

REGULAR ARMY PERSONNEL ON DUTY WITH THE HAWAII NATIONAL GUARD.

Name	Assignment	Address
Lindroth, Elmer G. Mrs. Lindroth	Major, Inf., Dept. N.G. Officer and Senior Instr.	National Guard Armory 1623 Pensacola St. (65641)
Potter, Harold E. Mrs. Potter	Major, Inf., Ass't Instr.	National Guard Armory (4748), 4079 Akulikuli St. (78148)
Parker, Gilbert E. Mrs. Parker	Major, Inf., 1st Bn., 299th Inf.	National Guard Armory P. O. Box 414 Wailuku, Maui, T. H.
Stafford, Benjamin Mrs. Stafford	Major, Inf., 2nd Bn., 299th Inf.	National Guard Armory Hilo, Hawaii, T. H.
McKee, Richard G. Mrs. McKee	Capt. Inf., Ass't to Dept. N.G. Officer	National Guard Armory (2306-No. 3), 3852 Woodlawn Drive, (98827)
Knapp, Robert H. Mrs. Knapp	Capt. F.A. Ass't to Dept., N.G. Officer	National Guard Armory (2306-No. 3), 147 Kealahilani St. (91100)
McDole, Oscar Mrs. McDole	Staff Sgt. (D.E.M.L.) 298th Inf.	National Guard Armory (4748), 1559 Louis Drive Honolulu, T. H.
Almaw, Earl I.	Sgt. (D.E.M.L.) 298th & 299th Inf.	National Guard Armory (4748), Army & Navy Y. M. C. A., Honolulu, T. H.
Clarke, Charlis Mrs. Clark	Sgt. (D.E.M.L.), 299th 1st Bn., 299th Inf.	National Guard Armory Wailuku, Maui, T. H.
Krantz, Homer W.	Sgt. (D.E.M.L.), 299th Inf., 2nd Bn.	National Guard Armory Hilo, Hawaii, T. H.