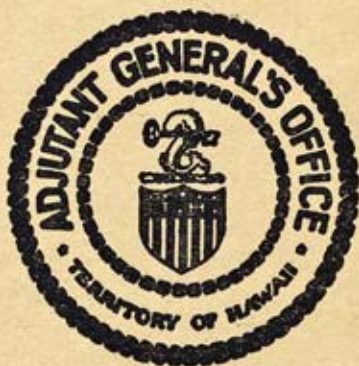


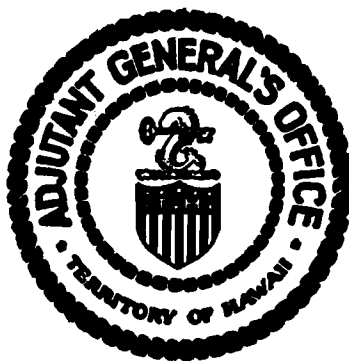
Annual Report  
of  
The Adjutant General  
Territory of Hawaii

July 1, 1934, to June 30, 1935



Annual Report  
of  
The Adjutant General  
Territory of Hawaii

July 1, 1934, to June 30, 1935





HIS EXCELLENCY, JOSEPH B. POINDEXTER, GOVERNOR OF HAWAII,  
COMMANDER-IN-CHIEF, HAWAII NATIONAL GUARD

LIST OF THE ADJUTANTS GENERAL OF THE  
TERRITORY OF HAWAII

<i>Name</i>	<i>Rank</i>	<i>From</i>	<i>To</i>
John H. Soper	Lieut. Colonel	July 6, 1894	August 6, 1903
	Colonel	August 7, 1903	April 1, 1907
John W. Jones	Colonel	April 2, 1907	August 15, 1915
Samuel I. Johnson	Brig. General	August 16, 1915	February 19, 1918
Will Wayne	Major	Acting March 1, 1918	
	Colonel	App. June 8, 1918	September 21, 1918
Harry S. Hayward	Colonel	App. Sept. 23, 1918	February 8, 1921
William D. Potter	Colonel	February 9, 1921	July 31, 1923
John W. Short	Major	Acting Aug. 1, 1923	August 24, 1923
Perry M. Smoot	Colonel	App. Aug. 25, 1923	Incumbent

NOTE: Periods of "Acting The Adjutant General" shown only in cases where there was no actual The Adjutant General.

## INDEX

---

	Page
Accidents .....	18
Active Duty .....	11
Adjutant General's Office.....	2
Adjutant General's Section.....	18
Adjutants General, List of.....	iv
Administration, Office .....	2
Aides .....	Appendix "A"
Ammunition .....	20
Appointments, Territorial .....	Appendix "A"
Appropriations, Territorial.....	26
Armament .....	20
Armories .....	10, 21
Armory Board Funds.....	21
Armory Drill Attendance.....	8
Armory Schools.....	11
Attendance, Armory Drill.....	8
Attendance, Field Encampments.....	12
Camp Site, 299th Inf., Picture of.....	13
Caretakers, Federal Property.....	10
Chief, National Guard Bureau, Visit of.....	25
Code Books.....	9
Commissioned Grades.....	5
Conclusion of Report.....	25
Correspondence Courses .....	9
Courts-Martial .....	19
Distinctive Insignia .....	25
Drill Attendance .....	8
Duty, Active .....	11
Encampments, Attendance at.....	12
Encampments, Health Conditions at.....	18
Enlisted Grades .....	5
Enlisted Men, Gains.....	6
Enlisted Men Holding Reserve Commissions.....	Appendix "A"
Enlisted Men, Losses .....	6
Equipment, Ordnance .....	20
Expenditures, Federal .....	16, 17, 26
Expenditures, Territorial .....	17, 26
Extension Courses .....	9
Facilities, Training .....	10
Federal Funds .....	16, 17, 26

	Page
Federal Property .....	15
Field Training .....	12, 19
Finance Section .....	15
Funds, Federal .....	16, 17, 26
Funds, Inspections of.....	19
Funds, Medical .....	18
Funds, Territorial .....	17, 26
Gains, Enlisted Men.....	6
Gains, Officers .....	6
Governor, Picture of.....	iii
Governor's Aides .....	Appendix "A"
Grades, Commissioned .....	5
Grades, Enlisted .....	5
Headquarters, Sections of.....	2
Health Conditions at Annual Encampments.....	18
Historical Section .....	25
Illnesses .....	18
Immunization .....	18
Inactive National Guard.....	Appendix "A"
Injuries .....	18
Inoculations .....	18
Insignia, Distinctive .....	25
Inspections, Annual Encampment.....	19
Inspections, Territorial Armory.....	19
Inspector General's Section.....	19
Instructors, Regular Army.....	3
Intelligence Section .....	8
Introduction .....	2
Investigations .....	19
Iolani Barracks, Picture of.....	22
Judge Advocate General's Section.....	19
Leach, Major General George E., Visit of.....	25
Legislation .....	26
Letter of Transmittal of Report.....	1
Location of Units.....	4
Losses, Officers and Enlisted Men.....	6
Marksmanship .....	14
Matches, Rifle .....	11, 15
Medal, Service .....	7
Medical Section .....	18
Military Academy .....	25
Mission, Training .....	9
Morale .....	27
National Guard Inactive Officers.....	Appendix "A"
Nativity Report .....	6
Office Administration .....	2
Office of The Adjutant General.....	2

	Page
Office of the Territorial Quartermaster.....	2
Officers, Commissioned .....	5
Officers, Gains .....	6
Officers, Inactive National Guard of U.S.....	Appendix "A"
Officers, Losses .....	6
Officers, Roster of.....	Appendix "A"
Officers' Station List and Directory.....	Appendix "A"
Operation of Ranges.....	10, 24
Ordnance Section .....	20
Organizations .....	4
Organizations, Stations of.....	4
Parades .....	11
Personnel Section .....	4
Plans and Training Section.....	9
Policies, Training .....	9
Progress, Training .....	9
Property, Federal .....	15
Property, Territorial .....	16
Qualification with Weapons.....	14
Quartermaster's Office, Territorial .....	2
Ranges, Target .....	10, 24
Records, Service, Certificate .....	19
Records, World War.....	8
Regular Army Instructors.....	3
Report, Conclusion of.....	25
Report, Nativity .....	6
Reserve Commissions, Enlisted Men Holding.....	Appendix "A"
Retired List .....	Appendix "A"
Rifle Matches .....	11, 15
Rifle Practice .....	14
Rifle Ranges .....	10, 24
Rifle Teams .....	11, 15
Roster of Officers.....	Appendix "A"
Sanitation .....	18
Schools, Armory .....	11
Schools, Service .....	11
Service Medal .....	7
Service Records, Certificate .....	19
Small Arms Competitions.....	11, 14
Stations of Units.....	4
Strength .....	4
Supply and Finance Section .....	15
Target Ranges .....	10, 24
Team, National Match .....	15
Territorial Appointments .....	Appendix "A"
Territorial Funds .....	17, 26
Territorial Naval Militia .....	Appendix "A"

	Page
Territorial Property .....	16
Territorial Quartermaster, Office of.....	2
Territorial Staff .....	Appendix "A"
Training Activities .....	11
Training Facilities .....	10
Training, Field .....	12
Training, Inspection .....	19
Training Mission .....	9
Training Policies .....	9
Training Progress .....	9
Training Schedules .....	19
Training Section .....	9
United States Military Academy .....	25
Units, Location of .....	4
Vehicles .....	16
World War Records .....	8



Page  
...16  
...2  
"A"  
...11  
...10  
...12  
...19  
...9  
...9  
...19  
...9  
...25  
...4  
...16  
...8

LETTER OF TRANSMITTAL

TERRITORY OF HAWAII  
THE ADJUTANT GENERAL'S OFFICE  
HONOLULU

August 13, 1935

Honorable Joseph B. Poindexter  
Governor of Hawaii  
Honolulu, T.H.

Sir:

In compliance with the request of the Governor under date of June 29, 1935, and in compliance with Section 7822, Revised Laws of Hawaii 1935, I have the honor to submit the Annual Report of The Adjutant General of the Territory of Hawaii for the period July 1, 1934-June 30, 1935.

Respectfully yours,

P. M. SMOOT,  
Colonel, Inf., NGUS.,  
The Adjutant General.

ANNUAL REPORT  
OF  
THE ADJUTANT GENERAL, TERRITORY OF HAWAII  
JULY 1, 1934-JUNE 30, 1935

---

INTRODUCTION

The headquarters of the Hawaii National Guard has been conducted along the plans laid down some years ago to conform to the usual military procedure for the headquarters and number of troops assigned to the Hawaii National Guard. The routine work of this headquarters is divided into the following sections:

- (1)—Personnel
- (2)—Intelligence
- (3)—Plans and Training
- (4)—Supply, Finance, Construction and Transportation
- (5)—Territorial Staff Group (Medical, Legal,  
Transportation and Supply)

Owing to the lack of sufficient military personnel and clerical help, considerable of the duties of the above-mentioned sections are performed by the same persons.

An innovation was inaugurated in May, 1935, at the request of the Territorial Quartermaster of segregating the office of that officer, which includes the administration of supply, finance, construction and transportation, to a separate office in the Honolulu Armory.

*Office Administration*—As practically every communication handled in this office must pass through regularly prescribed military channels and be acted upon by intermediate officials, the task of handling even routine matters is voluminous. The periodical reports which must be made to the Budget Bureau of the Territory and the War Department necessitate the keeping of many records and the assembling of considerable data. Since a large portion of the work consists of records of personnel and supply, most of which are matters of permanent record and may be called for at any future time, the utmost care must be exercised. The

clerical force of this headquarters is not large enough to adequately perform the duties devolving upon it—that is, administration, supply, construction, inspections and the supervision of training.

*Regular Army Instructors*—The Regular Army officers and noncommissioned officers on duty with the National Guard are detailed by the War Department because of their special fitness for this duty, which requires detailed knowledge and experience in troop training, as well as tact in dealing with the non-professional soldier, who, though helped to a limited extent by armory drill and camp pay from the Federal Government, makes his regular living through civil pursuits. As National Guardsmen attend drill but once a week for an hour and a half and spend fifteen days annually in the field, to establish and maintain efficiency it is obviously necessary that they receive intensive and correct instruction and inspection during these limited periods from qualified instructors.

I am pleased to report that our Regular Army instructors have exemplified this military standard and have assiduously performed their duties. Their interest in the personnel of the Hawaii National Guard and cooperation given in the solution of our many problems are highly appreciated.

The officers and noncommissioned officers of the Regular Army now on duty with the Hawaii National Guard and their dates of assignment are as follows:

#### ISLAND OF OAHU

Lt. Colonel Forrest E. Overholser, Inf., Senior Instructor  
(January 12, 1935).

Captain George H. Molony, Inf., Assistant Instructor, assigned to 298th and 299th Infantry (August 17, 1934).

1st Lieutenant Ralph Pulsifer, Inf., Assistant to the Senior Instructor (March 1, 1933).

Staff Sergeant Peter A. Knoll, DEML, Sergeant-Instructor, 299th Infantry (January 12, 1935).

Staff Sergeant Oscar McDole, DEML, Sergeant-Instructor, 298th Infantry (June 14, 1934).

#### ISLAND OF HAWAII

Captain Ben Stafford, Inf., Instructor, 299th Infantry  
(April 11, 1935).

Sergeant Homer W. Krantz, DEML, Sergeant-Instructor,  
299th Infantry (June 24, 1935).

#### ISLAND OF MAUI

1st Lieutenant Edward F. Adams, Inf., Instructor, 299th  
Infantry (March 27, 1933).

Sergeant Charlie L. Clark, DEML, Sergeant-Instructor,  
299th Infantry (June 24, 1935).

Sergeants Krantz and Clark were assigned to duty with the  
299th Infantry in June to replace Sergeant-Instructors who were  
relieved in August, 1933. The lack of assistants has handicapped  
the instructors and these assignments are of great value.

#### 1st SECTION — PERSONNEL

Major Francis Xavier, Ord. Dept., Chief of Section

*Organization*—The Hawaii National Guard consists of the  
Territorial (State) Staff and Detachment, the 298th Infantry (less  
inactive 3rd Battalion) and the 299th Infantry (less inactive 3rd  
Battalion).

*Stations of Units*—The stations of units of the Hawaii Na-  
tional Guard are as follows:

Office of the Commander-in-Chief.....	Honolulu
Office of The Adjutant General.....	Honolulu
Territorial (State) Staff and Detachment.....	Honolulu
298th Infantry .....	Honolulu
299th Infantry (less How. Co.; MDD; 1st Bn. and 2nd Bn.).....	Honolulu
Howitzer Co., 299th Infantry.....	Honolulu
Medical Dept. Detachment, 299th Inf.....	Hilo
Hdqs. & Hdqs. Co., 1st Bn., 299th Inf.....	Wailuku
Company A, 299th Infantry.....	Lahaina
Company B, 299th Infantry.....	Wailuku
Company C, 299th Infantry.....	Paia
Company D, 299th Infantry.....	Wailuku
Hdqs. & Hdqs. Co., 2nd Bn., 299th Inf.....	Hilo
Company E, 299th Infantry.....	Papaikou
Company F, 299th Infantry.....	Hilo
Company G, 299th Infantry.....	Olaa
Company H, 299th Infantry.....	Hilo

*Strength*—The strength allotted the Hawaii National Guard by  
the National Guard Bureau has not been changed during the past

fiscal year, and is prescribed at 110 commissioned officers, 2 warrant officers and 1606 enlisted men, a total of 1718. On June 30, 1935, there were 108 commissioned officers, 2 warrant officers and 1522 enlisted men, as follows:

	298th Inf.	299th Inf.	TS & TD	Total
Officers .....	50	50	8	108
Warrant Officers (Band Leaders)	1	1	....	2
Enlisted Men.....	740	761	21	1,522
Totals .....	791	812	29	1,632

#### COMMISSIONED OFFICERS BY GRADE (Warrant Officers Included)

	298th Inf.	299th Inf.	TS & TD	Total
Colonels .....	1	1	1	3
Lt. Colonels .....	1	1	....	2
Majors .....	5	4	4	13
Captains .....	13	12	3	28
1st Lieutenants .....	15	16	....	31
2nd Lieutenants .....	15	16	....	31
Warrant Officers .....	1	1	....	2
Totals .....	51	51	8	110

#### ENLISTED RETURNS BY GRADE

	I	II	III	IV	V	VI	VII	Total
298th Infantry .....	4	13	5	84	81	148	405	740
299th Infantry .....	4	11	5	80	87	158	416	761
Territorial Detachment ..	....	1	2	3	3	4	8	21
Totals .....	8	25	12	167	171	310	829	1,522

The strength of the Hawaii National Guard on June 30, 1935, represents an increase of 2 commissioned officers and a decrease of 12 enlisted men over that shown on June 30, 1934.

On the Inactive List are 7 Captains, 2 1st Lieutenants, 6 2nd Lieutenants and 171 enlisted men.

An Officers' Station List and Directory is contained herein as Appendix "A."

Officers in the Inactive National Guard of the United States and enlisted personnel holding commissions in the National Guard of the United States are listed in Appendix "A."

Gains (15):		OFFICERS
Original appointments .....		15
Losses (11):		
Resignations .....		6
Transfers to Inactive NGUS.....		5

Gains (732):		ENLISTED MEN
Enlistments .....		473
Reenlistments .....		220
Transfers from Inactive List.....		39
Losses (738):		
Transfers to the Inactive List.....		224
Honorable discharges:		
Expiration of term of service.....		342
Removal of residence .....		104
Special authority of the governor.....		15
To enter U.S. Military Academy.....		2
Acceptance of commission.....		4
To enlist in Regular Army.....		1
Surgeon's Certificate of Disability.....		6
Business interference .....		8
Discharges without honor:		
Convictions by civil court.....		12
Fraudulent enlistments .....		1
Minority .....		1
Dropped as deserters.....		17
Died .....		1

*Nativity Report*—Nativity Report of the Hawaii National Guard as of June 30, 1935:

	Officers and Warrant Officers	Enlisted Men
Hawaiians .....	14	301
Portuguese .....	7	294
Caucasian-Hawaiians .....	11	200
Chinese .....	5	194
Americans (and other Caucasians).....	67	144
Chinese-Hawaiians .....	6	126
Puerto Ricans .....	....	83
Colored and all others.....	....	76
Japanese .....	....	50
Koreans .....	....	27
Spaniards .....	....	15
Filipinos .....	....	12
	110	1,522

The five leading nationalities are as follows:

1. Hawaiians and part-Hawaiians.....	658
2. Portuguese .....	301
3. Americans .....	211
4. Chinese .....	199
5. Puerto Ricans .....	83

The following major nationalities show an increase as compared with the report of June 30, 1934:

Hawaiians and part-Hawaiians.....	18
Chinese .....	8

The following major nationalities show a decrease as compared with the report of June 30, 1934:

Americans .....	35
Puerto Ricans .....	31
Portuguese .....	18

*Service Medal* — During the past fiscal year officers and enlisted men who have qualified for the 'Ten (10) Years' Continuous Service Medal were not awarded such, due to insufficient funds appropriated for the Military Department. The following have qualified for the 'Ten (10) Years' Continuous Service Medal and/or bars during the past fiscal year:

<i>Medal No.</i>	<i>Name</i>	<i>Rank and Organization</i>
109	Joseph K. Ne	Sergeant, Co. A, 298th Inf.
110	Edward N. Crawford	Private, Co. A, 298th Inf.
111	Henry D. Kahakui	Sergeant, Co. A, 298th Inf.
112	Alihandro Balberdo	Sergeant, How. Co., 298th Inf.
113	Carl S. Baptist	Sergeant, Serv. Co., 298th Inf.
114	Manuel DeSa	Sergeant, How. Co., 299th Inf.
115	Carlos Angelo	Corporal, How. Co., 299th Inf.
116	Jesse Enos	Sergeant, Co. G, 299th Inf.
117	Eddie Kipili	Sergeant, Co. G, 299th Inf.
118	Adam Basque	Private, Co. G, 299th Inf.
119	Benjamin Hao	Corporal, Co. F, 299th Inf.
120	John H. Garcias	Private, Co. G, 299th Inf.
121	Alvin H. Kop	Sergeant, M.D.D., 298th Inf.
122	Julian K. Napuunoa	Corporal, Co. B, 298th Inf.
123	James T. M. Chang	Captain, 298th Inf.
124	Edmund Young	1st Sergeant, Co. C, 298th Inf.
125	Edwin K. Stone	Private, Co. C, 298th Inf.
• 126	Paul B. Porter	Major, 298th Infantry

Twenty (20)	Year Service Bar	Lt. Col. William Hoopai, 298th Inf.
Twenty (20)	“ “ “	Major Frederic L. Morong, M.C.
Fifteen (15)	“ “ “	1st Lt. David P. Kahanamoku, 298th Inf.
Fifteen (15)	“ “ “	Major Peter N. Pakele, Jr., 299th Inf.
Fifteen (15)	“ “ “	Sgt. Joseph K. Ne, Co. A, 298th Inf.
Fifteen (15)	“ “ “	Major Francis Xavier, Ord. Dept.
Fifteen (15)	“ “ “	Ms. Sgt. James Tsark, Service Co., 298th Inf.
Fifteen (15)	“ “ “	2nd Lt. Joseph K. Kapua, 298th Inf.
Fifteen (15)	“ “ “	Major Henry P. Judd 298th Inf.
Fifteen (15)	“ “ “	Colonel P. M. Smoot, Infantry

*Armory Drill Attendance*—The armory drill attendance percentages for the units of the Hawaii National Guard during the past fiscal year were as follows:

298th Infantry .....	74.78
299th Infantry .....	82.28
Territorial (State) Detachment.....	95.19
HAWAII NATIONAL GUARD.....	79.51

The drill attendance of the Hawaii National Guard, particularly the 298th Infantry, has not been up to the standard believed desirable for a National Guard unit. When compared with the attendance records as reported by the National Guard throughout the entire United States, our average is much lower. In explanation I desire to say, however, that the practice of having “split drills” to accommodate personnel working at nights and on holidays is not carried out in the Hawaii National Guard. Many of our units suffer when the pineapple canneries are in operation as such factories during the canning season must operate twenty-four hours a day, many of our Guardsmen being on the night work shifts.

*World War Records*—This office has on file records of the men and women of this Territory who served in the Army, Navy or Marine Corps during the World War. These records were furnished this headquarters by the War and Navy Departments. Many hundreds of extracts of records were furnished to the United States Veterans’ Relief Council, The American Legion, the United States Veterans’ Administration, and other Veteran organizations.

## 2ND SECTION — INTELLIGENCE

Requests for intelligence reports and data from this department have increased. Relations with other departments of the



Federal and Territorial Governments have been very satisfactory, and data freely exchanged.

Maps on hand, while they are the best of their kind and are conveniently stored for easy access, still lack certain important data essential to the proper protection of persons and property. Such data will be assembled and mapped during the coming year, provided additional personnel is authorized this headquarters by the Governor.

All code books are accounted for semi-annually. Personnel possessing such books have been reminded of the necessity for their proper safe custody.

### 3RD SECTION — PLANS AND TRAINING

*Mission, Policies, and Progress*—The training mission of the Hawaii National Guard is:

*a.* To maintain the Hawaii National Guard in condition to function effectively, at existing strength and without further training, when employed in minor emergencies by the Territorial or Federal Authorities.

*b.* To provide a sufficiently trained force, capable of rapid expansion to war strength, which with minimum delay can be employed as an effective component of the Army of the United States.

The training policies have been enlarged during the past year. Troop movement by motor transportation and the training of troops in this important function are stressed more than ever. Musketry and the use of other weapons by infantry are given greater emphasis, and more elaborate field exercises are required, involving the use of all weapons. During the 1934 field training camps both the 298th Infantry and 299th Infantry added to their training by conducting target practice, with appropriate weapons, using water-borne targets.

Both commissioned and enlisted personnel in increasing numbers are taking advantage of the opportunity offered National Guardsmen to pursue extension or correspondence courses in military subjects. These courses, conducted by the War Department, are intended not only to enable candidates to prepare themselves for examination in military subjects for commissions, but will also carry them on through the various courses of study appro-

priate to their grades. The instructors are uniformly sympathetic and display a most friendly and encouraging attitude toward those pursuing these courses, but are greatly handicapped by lack of personnel to inspect and grade papers turned in by the students. The result is that this work is greatly slowed down and students are sometimes delayed in completing their courses. At the present time 125 members of the Hawaii National Guard, commissioned and enlisted, are enrolled in the Army Extension Courses.

*Training Facilities*—A new 200-yard rifle range at Kuliouou, Oahu, was completed in December, 1934. This range is modern, equipped with 14 targets, is suitable for both rifle and machine gun firing, and has relieved the congestion at the Punchbowl Range. The entire cost of the target range construction work of this range (\$12,000.00) was borne by the National Guard Bureau through federal funds.

At Paukukalo, Maui, ten kitchens and messhalls for enlisted men were constructed by the Federal Government at a cost of \$28,000.00. The buildings were completed in December, 1934. In addition, an officers' kitchen and dining hall and two officers' bathhouses are now under construction from federal funds and will be completed in time for the field training of the 299th Infantry at that camp in September. A new water system is being installed at territorial expense at the camp site to insure an adequate water supply. These improvements are most welcome and will add greatly to the convenience and comfort of the personnel camped there.

The armory facilities have continued to deteriorate without adequate funds or personnel to maintain them. However, \$16,200 for the repair of armories, as well as \$50,000 for the construction of a new armory at Wailuku, Maui, has been provided by the Territorial Government. When these repairs and the new construction are completed the units occupying the various armories can carry out their training more effectively. The 298th Infantry is still handicapped by lack of space in the Honolulu Armory.

Commencing July 1, 1935, caretakers for federal property will be provided for each armory from funds appropriated by the National Congress for the purpose. These caretakers will be employed by the Federal Government and unit commanders can then

have assistance in the proper care and safeguarding of their organization property.

*Training Activities*—Troops participated in parades on Independence Day, Armistice Day, Memorial Day and Kamehameha Day, as well as special parades and field days. Several units held overnight camps, particularly during the target practice season, when they camped on the rifle ranges and engaged in target practice.

*Rifle Matches*—The Chief, National Guard Bureau's, Indoor Rifle Matches were held during February and March, 1935. In the Company Match, Company C, 298th Infantry, the leading Hawaiian team, placed 24th in a field of 214 entries from the entire National Guard of the United States. In the Regimental Match the 298th Infantry placed 9th among 36 regimental teams. In the Individual Matches, Pvt. Reinold Wennrich, Company E, 298th Infantry, and Sgt. Robert L. Stevenson, Company E, 298th Infantry, placed 35th and 41st respectively. Suitable medals were distributed to the competitors listed above.

In March, 1935, Company C, 298th Infantry, represented its regiment in the William Randolph Hearst Musketry Competition and placed 44th in the match.

*Active Duty*—The Hawaii National Guard troops in the City of Honolulu were called to active duty by the Governor on February 27, 1935, to preserve order, rescue persons and property, and prevent looting during the storm conditions in the City and County of Honolulu. The following numbers of Guardsmen responded to the call and were on duty until the afternoon of February 28, 1935:

298th Infantry .....	41	Officers	1	Warrant Officer	297	Enlisted Men
299th Infantry .....	9	"	..	"	26	"
Territorial Staff .....	3	"	..	"	..	"
Territorial Det. ....	..	"	..	"	4	"
Totals .....	53	"	1	"	327	"

One platoon consisting of one officer and thirty enlisted men selected from the above-mentioned personnel was on duty February 28th and March 1st under the direction of the Chief of Police of the City and County of Honolulu.

*Armory and Special Service Schools*—Armory schools were held weekly during the armory training period. The Hawaiian

Department has cooperated generously in furnishing interesting lecturers and selected moving picture training films, especially to the units in Honolulu. It is hoped that this service can be extended to units stationed on the other islands during the coming year.

Only one vacancy was allotted the Hawaii National Guard at the Regular Army Service Schools this past fiscal year. Captain John C. Simerson, 298th Infantry, attended the Company Officers' Course at the Infantry School, Fort Benning, Georgia, February 25 - May 25, 1935, incl.

*Field Training*—The annual encampments for the calendar year 1934 were held as indicated below:

At Honolulu, Oahu, July 14-28, 1934, incl.

	Officers	W.O.	Enl. Men
Territorial (State) Staff .....	7	0	0
Territorial (State) Detachment.....	0	0	17
	<hr/>	<hr/>	<hr/>
Total present at Honolulu.....	7	0	17

At Koko Head, Oahu, T.H., Aug. 11-25, 1934, incl.

	Officers	W.O.	Enl. Men
State Staff and Detachment.....	1	0	0
298th Infantry:			
Headquarters .....	6	0	0
Headquarters Company .....	2	0	50
Service Company .....	2	1	50
Howitzer Company .....	3	0	39
Medical Department Detachment .....	5	0	19
Headquarters, 1st Battalion .....	1	0	0
Headquarters Company, 1st Bn. ....	2	0	13
Company A .....	3	0	42
Company B .....	3	0	49
Company C .....	3	0	37
Company D .....	3	0	42
Headquarters, 2nd Battalion .....	1	0	0
Headquarters Company, 2nd Bn.....	2	0	13
Company E .....	3	0	42
Company F .....	3	0	45
Company G .....	2	0	43
Company H .....	2	0	41
	<hr/>	<hr/>	<hr/>
Total present at Koko Head.....	47	1	525

resting  
ially to  
extended  
ar,  
ward at  
Captain  
officers'  
bruary

alendar

nl. Men  
0  
17  
—  
17

nl. Men  
0  
0  
50  
50  
39  
19  
0  
13  
42  
49  
37  
42  
0  
13  
42  
45  
43  
41  
—  
25

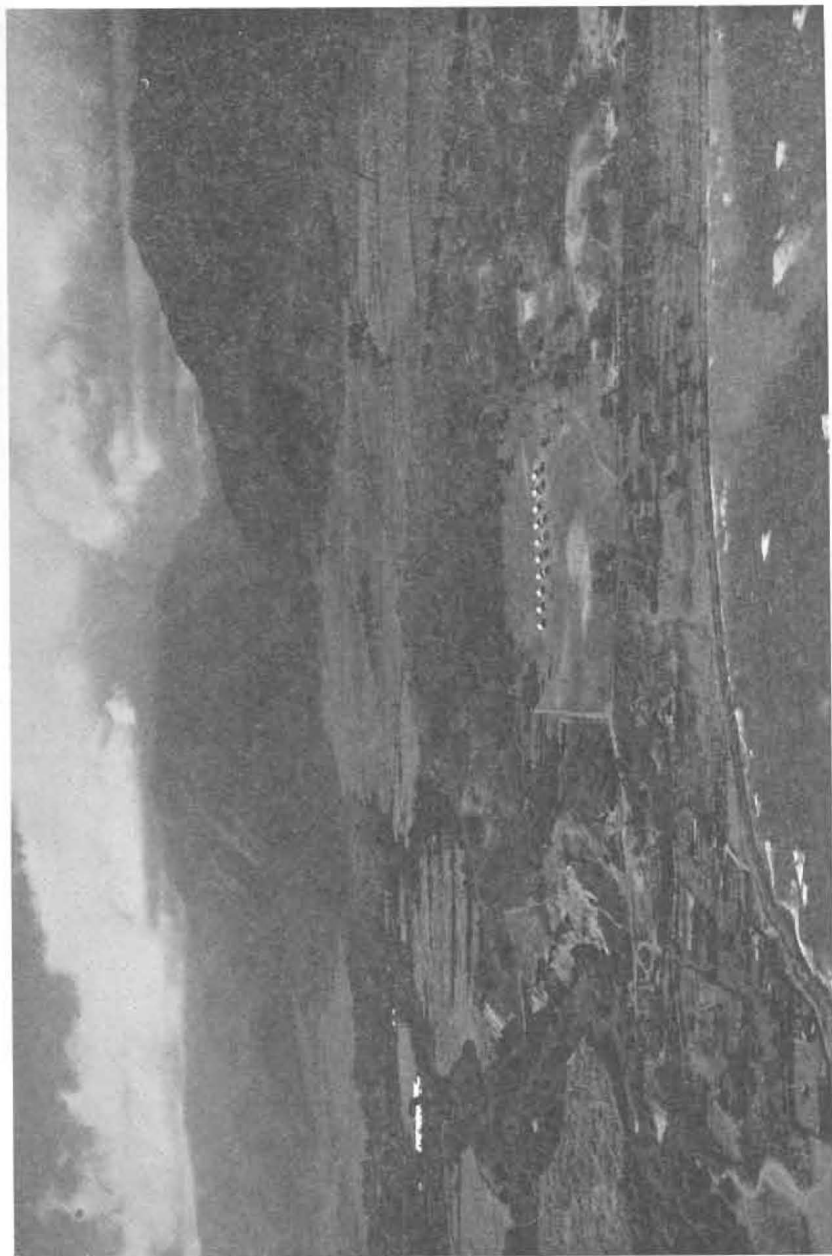


Photo by 11th Photo Section, Wheeler Field, T. H.

**PERMANENT CAMP SITE OF THE 299TH INFANTRY, H.N.G.**

Paukukalo (Waituku), Maui, T.H. (Iao Valley in background)

Photo taken November, 1934

At Paukukalo, Maui, Sept. 8-22, 1934, incl.

	Officers	W.O.	Enl. Men
298th Infantry (Attached).....	1	0	3
299th Infantry:			
Headquarters .....	7	0	0
Headquarters Company .....	2	0	53
Service Company .....	4	0	57
Howitzer Company .....	2	0	51
Medical Department Detachment .....	4	0	23
Headquarters, 1st Battalion.....	1	0	0
Headquarters Company, 1st Bn.....	1	0	17
Company A .....	3	0	59
Company B .....	2	0	61
Company C .....	2	0	56
Company D .....	2	0	54
Headquarters, 2nd Battalion .....	0	0	0
Headquarters Company, 2nd Bn.....	2	0	22
Company E .....	3	0	60
Company F .....	3	0	40
Company G .....	3	0	46
Company H .....	3	0	39
Total present at Paukukalo.....	45	0	641

#### RECAPITULATION

	Officers	W.O.	Enl. Men
Total present at Honolulu, Oahu.....	7	0	17
Total present at Koko Head, Oahu.....	47	1	525
Total present at Paukukalo, Maui .....	45	0	641
Total .....	99	1	1183
GRAND TOTAL .....			1283

The training during the past year was greatly diversified and included, in addition to the routine training, firing at moving water targets with rifles, machine guns, 37 mm guns and trench mortars, as well as an interesting course of instruction in gas defense conducted by Major George F. Unmacht, CWS, USA.

A number of Territorial employees who are members of the Guard failed to attend field training camps due to the requirement that unless regular annual leave is taken the amount received by the individual from the Federal Government be deducted from their territorial pay.

*Marksmanship*—Following is a consolidated table showing the number qualified with each type of weapon employed by the Hawaii National Guard in 1934. Figures in parenthesis indicate

personnel who qualified during 1932 or 1933 and who were in service at the end of the 1934 target practice season.

	Rifle	Pistol	Auto. Rifle	Machine Gun	37MM & 3" TM	Totals
298th Inf. ....	158 (169);	23 (123);	0 (41);	54 (34);	13 (11);	248 (378)
299th Inf. ....	33 (180);	0 ( 0);	11 ( 0);	47 (60);	5 (22);	96 (262)
	<hr/>					
	191 (349);	23 (123);	11 (41);	101 (94);	18 (33);	344 (640)

The reduced ammunition allowances for target practice, together with the Federal limitation of permitting personnel to fire but once in three years when once qualified, has tended to decrease interest in marksmanship.

It is regretted that lack of funds makes it necessary for the National Guard Bureau to withhold permission for the Hawaii National Guard to send a rifle team to the National Rifle and Pistol matches to be held at Camp Perry, Ohio, in September, 1935.

#### 4TH SECTION — SUPPLY AND FINANCE

Col. P. M. Smoot, Inf., USP&DO and Terr. Quartermaster  
Chief of Section  
Capt. James T. M. Chang, Inf.  
Property Officer

*Federal Property*—During the past year there has been a change in our methods of accounting for federal property, particularly in the matter of collecting money for property lost or stolen, and which lost property has been on survey for a number of years. Just so long as the Territory does not provide for a permanently employed Quartermaster who will also act as the Guard's Finance, Property, Transportation and Construction Officer, just so long will the Territory continue to pay for losses of property that cannot be readily accounted for. Our property situation has not been in so excellent condition as would be desirable, primarily due to the above cause. We have had constant changes of Territorial Quartermasters owing to the very rigid demands made upon that officer by federal requirements and regulations.

At present the entire federal property situation of the Hawaii National Guard is undergoing many changes, which include the reconstruction of storage facilities in the Honolulu Armory and the discarding of all old equipment to be replaced by new material

issued at the expense of the National Guard Bureau. The Hawaii Guard has not always received from the National Guard Bureau its full and just amounts for clothing and equipment as authorized by law. However, it is believed that this condition will be changed owing to the sympathetic interest shown by the Chief, National Guard Bureau, and his staff due to the visit in March, 1935, of Major General George E. Leach, Chief of the Bureau. General Leach visited and inspected each organization and station of the Hawaii National Guard, as well as all its installations. He was in the Territory from March 19 to April 11, 1935, incl.

*Territorial Property*—Owing to the greatly reduced appropriations of this department, our territorial property and equipment, all non-military, suffered greatly from lack of repairs and renewals during this past fiscal year. This condition applies to the property in each of our nine armories. In the Honolulu Armory termites have destroyed considerable of our wooden furniture and equipment. It is hoped that eventually most of this will be replaced by articles of steel construction.

The inventory value of territorial property, other than buildings and grounds, in the hands of the Military Department is approximately \$7,000. We do not operate any territorially owned cars, our motor vehicle transportation being supplied by the National Guard Bureau or through personal ownership.

*Federal Funds*—Funds expended by the United States Property and Disbursing Officer, Hawaii National Guard, for the Federal Government in the support of the Hawaii National Guard during the fiscal year ending June 30, 1935, are as follows:

Expenses, Camps of Instruction.....	\$ 47,347.82
Pay of U.S. Property and Disbursing Officers.....	1,085.00
Employment of Range Keepers.....	615.46
N.I.R. Construction .....	38,226.09
Alteration, Renovation and Repairs to Articles of the Uniform....	928.53
Maintenance of Organization Equipment.....	688.54
Gasoline and Oil for Armory Training.....	75.52
Intra-State Transportation (Freight and Supplies—Inter-Island)	286.03
Musical Instruments, Supplies and Repairs.....	29.88

Total Federal Funds expended by U.S.P.&D.O.....\$ 89,282.87

The following expenditures for the fiscal year 1935 were made



from funds allotted to the Commanding General, Hawaiian Department, for the support of the Hawaii National Guard:

Armory drill pay.....	\$104,000.00
Office equipment, supplies and stationery for Regular Army Instructors .....	50.02
Travel of Regular Army personnel in connection with visits of instruction .....	81.90
Travel of Regular Army personnel in connection with camps of instruction .....	366.54
Travel of Regular Army personnel in connection with National Guard, not covered above.....	220.74
Transportation of Federal property.....	14.80
Expenses of Sergeant-Instructors, Regular Army.....	1,384.72
Packing and handling ammunition.....	10.65
Procurement of articles of uniform.....	6,937.24
Procurement of miscellaneous Q.M. equipment, supplies and repairs.....	4,415.08
Procurement of Ordnance equipment, supplies and repairs.....	6,186.40
Procurement of Engineer equipment, supplies and repairs.....	115.61
Procurement of Signal equipment, supplies and repairs.....	292.32
Procurement of Chemical Warfare equipment, supplies and repairs.....	419.40
Procurement of ammunition.....	5,003.24
<hr/>	
Total Federal Funds expended by Commanding General, H. D. ....	\$129,498.66
Total Federal Funds expended by U.S.P.&D.O.....	89,282.87
<hr/>	
Grand Total Federal Funds expended F. Y. 1935.....	\$218,781.53

*Territorial Funds*—Territorial funds expended during the fiscal year were as follows:

Personal Services .....	\$ 11,161.11
Other Current Expenses .....	4,202.68
Improvements to Summer Camps.....	1,011.96
Repairs to Iolani Barracks.....	599.47
Equipment .....	187.75
Capital Outlays .....	250.00
Expenses, Active Duty, Flood Relief.....	2,713.42
<hr/>	
Total .....	\$ 20,126.39

It can readily be seen that the Federal Government is still leading the Territorial Government in a large way in its financial support of the Hawaii National Guard. It will be noted that as of June 30th the National Guard Bureau has met the dollar appro-

prated by the Territory of Hawaii for the support of the Guard in the amount of almost eleven dollars to one dollar.

#### 5TH SECTION — TERRITORIAL STAFF

Adjutant General's Section—Major E. M. Bolton, A.G.D.,  
Chief of Section

*Armory Training Year*—Administration of the Inactive Officers and enlisted men has been performed by this department during the period covered (see Appendix "A").

*Annual Field Training*—The annual field training was performed at the Honolulu Armory from July 14 to 28, 1934, both dates inclusive.

Medical Section—Maj. F. L. Morong, M.C., S.S.  
Chief of Section

*Smallpox — Typhoid — Para-Typhoid Prophylaxis* — Returns show prophylaxis in the 298th Infantry to be complete. Due to the geographic disposition of units of the 299th Infantry and resulting inaccessibility to medical attention prophylaxis could not be carried out so thoroughly, but a fair percentage has received complete immunization.

*Health Conditions at Annual Encampments*—During the two weeks' training period of the 298th Infantry near Koko Head there were three hundred and forty-five (345) patients treated at the regimental dispensary. One case (incipient lobar pneumonia) was sent to the hospital, and one case of epilepsy discharged by S.C.D. route. There were no casualties.

During the two weeks' training period of the 299th Infantry on Maui there were eight cases sent to the hospital. There were no reports of dispensary cases or casualties.

*Injuries in Line of Duty*—None.

*Sanitation*—298th Infantry Encampment: Sanitary conditions good except for inadequate drainage from showers due to nearness of sea level. 299th Infantry Encampment: Sanitary conditions excellent. Armories: Sanitary conditions at the armories and at Punchbowl are satisfactory.

*Finances*—The sum of twenty dollars (\$20.00) was obtained

from Regimental Funds for medical supplies for the 298th Infantry.

*Recommendations*—The Regimental Surgeon of the 298th Infantry advises the urgent need of field kitchens, ice boxes and kitchen utensils in some companies.

Inspector General's Section—Maj. H. L. Best, Inf.,  
Chief of Section

Inspection and report of the activities during the annual encampments at Koko Head, Oahu; Paukukalo, Maui; and Fort Armstrong, Oahu.

Semi-annual audit of funds and accounts of all units of the Hawaii National Guard, commencing in September, 1934, and in March, 1935. The last audit, as of March 31, 1935, showed that the funds of the various organizations are in an excellent condition.

Investigation and report on all applicants for commissions in the Hawaii National Guard.

Checking and supervising training schedules of all units of the Hawaii National Guard during the entire training year. These schedules were found satisfactory and complete.

Annual territorial armory inspection of all units of the 298th Infantry. The 299th Infantry and the State Detachment were inspected by The Adjutant General's Department.

Judge Advocate General's Section—Capt. Earl R. McGhee,  
J.A.G.D., Chief of Section

Only two cases of court-martial, both of which were summary courts-martial, were had since the last annual report. Both of these cases were tried under the 61st Article of War, the specifications being that the accused did absent themselves from drills. Pleas of guilty were entered in both cases and the soldiers reprimanded.

The Judge Advocate General advised The Adjutant General on general legal matters pertaining to the Military Department during the past year, and recommends that all service records prior to distribution to the command have stamped therein a form of a certificate to be executed by Company Commanders to the effect that the Articles of War required by Article of War 110 to be read and explained to every soldier at the time of his enlistment or within six days thereafter, were actually so read and explained within such time.

During the year several lectures were given on, and practical instruction had in, court-martial procedure. This work was carried on by Captain Archer Lerch, U. S. Army. The instruction was valuable and highly constructive, but was available only for the officers of the 298th Infantry. It is hoped that all National Guard officers can be given instruction in the administration of Military Justice in the rules of land warfare during the new fiscal year.

Ordnance Section—Maj. Francis Xavier, Ord. Det., S. S.,  
Chief of Section

*Armament*—The following is a list of armament of the Hawaii National Guard as of June 30, 1935:

Guns, Field, M/1902, 3".....	4
Guns, 37 M/M .....	13
Guns, Browning, Machine, Cal. .30.....	84
Mortars, 3" Stokes.....	8
Rifles, Auto., Cal. .30.....	136
Rifles, U.S., Cal. .30, M/1903.....	949
Rifles, U.S., Cal. .22, M/1922.....	57
Pistols, Auto., Cal. .45, M/1911.....	732
Bayonets, M/1905 .....	1289

There were 52 rifles, U.S. Cal. .30, M/1903, declared un-serviceable by the Ordnance Officer, Hawaiian Department, during this fiscal year, and shipped to the Hawaiian Ordnance Depot, Honolulu, for disposition.

A .22 Cal. Machine Gun has been developed that will give the soldier the necessary training without the expenditure of expensive ball ammunition. These guns are expected in the near future.

*Ammunition*—The approximate amount of ammunition expended by the Hawaii National Guard during the fiscal year ending June 30, 1935, for target practice, both for record and instruction firing and for field problems, is as follows:

Cartridges, Ball, Cal. .30, for Rifle, Automatic Rifle and Machine Gun .....	380,505
Shells, L. E., for 37 M/M Gun.....	279
Shells, practice, 3" Stokes Mortar.....	88
Cartridges, Blank, 37 M/M, for saluting purposes.....	417
Grenades, hand, C.M. (tear gas).....	60
Grenades, hand, W.P. (smoke).....	45
Cartridges, Ball, Cal. .22, L.R.....	274,219
Cartridges, Tracers, Cal. .30 .....	8,480

6TH SECTION — MISCELLANEOUS  
REPORT OF ARMORY BOARD  
RECEIPTS

Dates	Honolulu Armory	Hilo Armory	Lahaina Armory	Wailuku Armory	Olaa Res.	Iolani Bks.	Total
Symbol Numbers	S-2603	S-2606	S-2604	S-2605	S-2610	S-2615	
Balances on hand							
June 30, 1934	\$ 299.85	\$237.63	\$312.01	\$ 40.30	\$ 2.00	nil	\$ 891.79
July, 1934	.....	.....	.....	.....	.....	.....	.....
Aug., 1934	95.00	59.50	32.00	32.00	16.00	.....	234.50
Sept., 1934	502.00	17.50	.....	36.00	.....	.....	555.50
Oct., 1934	328.50	19.00	42.00	.....	.....	.....	389.50
Nov., 1934	262.00	26.00	.....	.....	.....	.....	288.00
Dec., 1934	248.00	26.00	5.50	.....	3.20	10.00	292.70
Jan., 1935	205.00	47.75	40.50	.....	.....	.....	293.25
Feb., 1935	165.00	39.25	11.50	32.00	.....	.....	247.75
Mar., 1935	240.00	24.00	14.00	.....	.....	.....	278.00
Apr., 1935	235.00	33.75	5.00	16.00	.....	.....	289.75
May, 1935	175.00	21.00	24.50	.....	.....	.....	220.50
June, 1935	452.47	21.00	14.00	16.00	.....	.....	503.47
Total Collections	\$2,907.97	\$334.75	\$189.00	\$132.00	\$19.20	\$10.00	\$3,592.92
Grand Total	\$3,207.82	\$572.38	\$501.01	\$172.30	\$21.20	\$10.00	\$4,484.71

EXPENDITURES

Dates	Honolulu Armory	Hilo Armory	Lahaina Armory	Wailuku Armory	Olaa Res.	Iolani Bks.	Total
July, 1934	\$ 27.65	\$ .....	\$ 5.40	\$ .....	\$ .....	\$ .....	\$ 33.05
Sept., 1934	519.78	96.72	.....	.....	12.00	.....	628.50
Oct., 1934	83.52	10.72	.....	.....	.....	.....	94.24
Nov., 1934	175.25	9.25	7.85	38.90	.....	.....	231.25
Dec., 1934	190.52	2.75	.....	.....	.....	.....	193.27
Jan., 1935	62.99	.....	.....	.....	.....	.....	62.99
Feb., 1935	495.15	93.79	22.50	.....	.....	.....	611.44
Mar., 1935	65.95	85.78	.....	63.39	.....	.....	215.12
Apr., 1935	175.64	.....	.....	.....	.....	.....	175.64
May, 1935	594.56	.....	.....	.....	.....	.....	594.56
June, 1935	123.77	2.50	23.40	55.55	.....	.....	205.22
	\$2,514.78	\$301.51	\$ 59.15	\$157.84	\$12.00	\$ .....	\$3,045.28
Balance on hand	.....	.....	.....	.....	.....	.....	.....
June 30, 1935	\$ 693.04	\$270.87	\$441.86	\$ 14.46	\$ 9.20	\$10.00	\$1,439.43

ARMORIES

The six (6) armories owned by the Military Department, Territory of Hawaii, are as follows:

*Honolulu, Oahu*—Two. Honolulu Armory, main construction concrete, in good condition, but does not afford adequate protec-



**IOLANI BARRACKS, HONOLULU**

Permanent Home of Headquarters, Headquarters Co. and Service Co.,  
299th Infantry, since February 28, 1934

tion to valuable Federal property stored therein. Erected in 1915. Iolani Barracks, main construction coral rock, in good condition, but does not afford adequate protection to the valuable Federal property stored therein. Conveyed to the Military Department by Executive Order #613, February 28, 1934. This is the oldest armory in the Territory.

*Hilo, Hawaii*—One. Main construction concrete and hollow tile. Erected in 1931 at an initial cost of \$85,000.00, formally opened Wednesday, November 25, 1931. This armory is in fair condition, subject to leaks and lacking equipment.

*Honolulu, Hawaii*—One. Main construction frame, in fair condition.

*Wailuku, Maui*—One. Main construction frame, in poor condition. The 1935 Legislature appropriated \$50,000 for the construction of a new armory at Wailuku.

*Lahaina, Maui*—One. Main construction frame, in fair condition.

Two (2) armories are loaned to the Territory of Hawaii as follows:

*Paia, Maui*—One. Main construction frame, and in good condition. Owned by the Maui Agricultural Company. Houses Company C, 299th Infantry.

*Papaikou, Hawaii*—One. Main construction frame, in good condition. Owned by the Onomea Sugar Company. Houses Company E, 299th Infantry.

One (1) armory leased to the Territory of Hawaii, viz.:

*Olaa, Hawaii*—One. Main construction frame, in poor condition due to lack of funds for its care and upkeep. Property of the Olaa Sugar Company. Houses Company G. A new lease for three years was signed effective June 1, 1934.

All armories are now equipped with concrete or iron strong rooms, or vaults, for the safe storage of arms and ammunition. Some of the armories, particularly Wailuku, are very old and inadequate. The new Hilo Armory is a distinct credit to the Territory of Hawaii and materially assists in maintaining morale in that community.

## TARGET RANGES

The target ranges in actual operation under the control of this department are as follows:

*Punchbowl, Island of Oahu*—Rifle, 200 and 300 yards, 14 targets; Pistol, dismounted, up to 75 yards, 9 targets; Machine Gun, 1000-inch, 4 targets; traps for trap-shooting; all in good condition. The caretaker received pay from the Federal Government during the fiscal year 1935 for three months only, due to lack of funds, but it is hoped that more funds will be available during the fiscal year 1936. During the current target practice year this range has been in continuous use every day, including Sundays and holidays, not only by the members of the Hawaii National Guard stationed in Honolulu, but also by detachments of the Regular Army, the U. S. Coast Guard, Police Department, Oahu Prison Guards, Civilian Rifle Clubs, Navy and unattached civilians, special authority being granted by this headquarters in each case for such use of our marksmanship facilities. The members of the National Guard have priority in the use of this range at all times. This target range is entirely inadequate to meet the requirements of all units of the 298th Infantry and it is not believed that it can be expanded. With the interest in marksmanship increasing and a corresponding increase in the number of men using the range, it is vitally necessary to the efficient training of National Guardsmen in the skillful use of the weapons with which they are armed that additional facilities be developed for such training.

*Kuliouou, Island of Oahu*—This range has just been completed this year at a cost of \$12,000.00 from the Federal funds allotted to the Hawaii National Guard. Rifle, 200 yards, 14 targets.

*Lahaina, Island of Maui*—Rifle, 1-pit, 3 targets, range 200 yards. This range is in good condition and affords ample facilities for the range work and training of Company A, 299th Infantry, stationed at that point.

*Paukukalo, Island of Maui*—Rifle, 1-pit, 6 targets, firing line echeloned for 200 and 300 yards; Machine Gun, 1000-inch, 7 targets; Pistol, 12 targets at 25 yards. Condition fair, due to the fact that the caretaker is employed only four months each year on account of lack of federal funds.



*Waiakea, Island of Hawaii*—Rifle, 200 and 300 yards, 6 targets each. Echeloned to permit firing at 500 and 600 yards. Pistol, or Machine Gun, 1000-inch Course, 4 targets. The condition of this range is fair. The caretaker received pay from the Federal Government during the fiscal year 1935 for only one month due to lack of funds.

*Olaa, Island of Hawaii*—Rifle, 2 targets at 200 yards. No paid caretaker. This range should be completed to meet the needs of Company G, 299th Infantry, stationed at that place. This range is in a very poor state of repair at the present time, being practically unserviceable. The repair of this range would relieve the Hilo Range to the extent of the firing of the men of Company G, 299th Infantry.

#### HISTORICAL

Research work among the personnel records was not possible during the past fiscal year, due to lack of clerical assistance.

Little progress was made on changing of designs for distinctive insignia during the past year.

#### UNITED STATES MILITARY ACADEMY

Private 1st Cl. Stanley R. Larsen, Howitzer Company, 298th Infantry, was honorably discharged from the Hawaii National Guard to enter the United States Military Academy at West Point, New York, on July 1, 1935. He received his appointment to the Academy through the Governor of Hawaii.

#### GOVERNOR'S AIDES

In Appendix "A" are listed the Governor's Aides.

#### CONCLUSION

The outstanding incident of the year as far as the Hawaii Guardsman is concerned, and to me the outstanding event of many years, was the visit of Major General George E. Leach, Chief of the National Guard Bureau, to the organizations of the Hawaii National Guard during the period March 19 - April 11, 1935, incl. This visit of General Leach was the first the Territory has ever had from a Chief of the old Militia Bureau or present National Guard Bureau. General Leach takes a keen interest in the welfare and progress of the National Guard of the United States. He

made a minute inspection of our armories, installations and personnel, inspecting and reviewing all units throughout the Territory. The financial benefits to the Territory and more particularly the Hawaii National Guard, through the visit of General Leach, are and will continue to be multifold, as was to be expected. The Hawaii Guard has been neglected or inadvertently overlooked in the expenditures of federal appropriations by agencies of the War Department for many years.

During this past year the Federal Government spent on the Hawaii National Guard within the confines of the Territory of Hawaii approximately eleven dollars as against one dollar of territorial funds expended for our salaries and general expenses. This comparison, a ratio of eleven dollars to one dollar being spent by the Federal Government, bears out the contention of The Adjutant General that the Hawaii National Guard is the largest-paying investment of the Territorial Government. No doubt the federal funds during the next year will be considerably greater than in the past and this ratio will probably be larger in favor of the Federal Government than even during this past year when it exceeded all previous percentages of financial assistance.

The Eighteenth Session of the Territorial Legislature, convening in February and adjourning in May, has appropriated for the next two years approximately \$80,500 for the operation of this agency of the Territorial Government. This increase of 250% over the past biennium comes due for expenditure on July 1, 1935. The full-time salary of The Adjutant General has been restored as of July 1st. During the past biennium he has been on part time, at one-third the regular salary.

The National Congress the last two years has been paying considerable attention to constructive legislation for the support of the National Guard of the United States, and only recently has changed somewhat the status of the citizen soldiers of the country. In former years, in fact ever since the creation of the Organized Militia of the United States, it has been the legal interpretation of the law that the National Guard, sometimes known as the Organized Militia, was a body of troops belonging to the various states, territories and District of Columbia, supported partially by appropriations of the national government. For such support it was expected troops would be loaned to the

Federal Government when so needed in the event of a national emergency. The last legislation which has established the National Guard of the United States has apparently reversed the situation as mentioned above, placing the National Guard of the United States in the hands of the Federal Government for any military emergency, and in time of peace it is loaned to the states, territories and the District of Columbia for their use in minor emergencies requiring armed forces for the enforcement of law and order.

In spite of an apparent lack within the Territory of sympathy with and support of the National Guard, the morale of the troops is considered satisfactory. I know from personal contact that they are well-trained, loyal and efficient soldiers and would do themselves and the military service credit when called upon for any type of military duty during any emergency.

Respectfully,

P. M. SMOOT,  
Colonel, Inf., NGUS,  
The Adjutant General.

APPENDIX

“A”

MILITARY DEPARTMENT  
TERRITORY OF HAWAII

Station List, Roster and Directory  
of Officers and Units of the  
Hawaii National  
Guard

OFFICE OF  
THE ADJUTANT GENERAL  
Honolulu, T. H.

NOTE: This directory is published for the information and guidance of all concerned. All errors, omissions and changes of any nature whatsoever will promptly be reported to the Personnel Officer, Military Department, Territory of Hawaii.

JUNE 30, 1935  
(Destroy all previous copies)

# ROSTER OF OFFICERS

AND

## ASSIGNMENTS

### COMMANDER-IN-CHIEF

Honorable Joseph B. Poindexter, Governor of Hawaii

### GOVERNOR'S STAFF

The Adjutant General and Chief of Staff

Colonel Perry M. Smoot, Inf.

Assistant The Adjutant General

Colonel WILHELM A. ANDERSEN, 298th Infantry

### AIDES-DE-CAMP

Commander E. Wayne Tod, U. S. N., Retired.

Lieut. Colonel William Hoopai, 298th Inf.

Lieut. Colonel Walter R. Dunham, T. H.

Commander Guy N. Rothwell, N. M., T. H.

### TERRITORIAL STAFF

Colonel P. M. Smoot, Infantry, The Adjutant General & U.S.P. & D.O.

Major Edward M. Bolton, Adjutant General's Department.

Major Frederic L. Morong, Medical Department (H.N.G. Gas Officer).

Major Henry L. Best, Infantry, Inspector General's Department.

Major Francis Xavier, Ordnance Department.

Captain Louis M. Vivas, Quartermaster Corps.

Captain Earl R. McGhee, Judge Advocate General's Department.

Captain James T. M. Chang, Inf., Assistant Quartermaster.

## TWO HUNDRED AND NINETY-EIGHTH INFANTRY

Colonel WILHELM A. ANDERSEN, Commanding

Lieut. Col. WILLIAM HOOPAI, Executive

Captain Robert R. McEldowney, S-1 & 2. Major William S. Chillingworth, S-3

Captain B. F. Modisett, Ass't S-3. Captain Clarence J. Olds, S-4.

Major Henry P. Judd, Chaplain.

### HEADQUARTERS COMPANY

1st Lieut. ROLLAND I. JONES  
2nd Lieut. KENNETH L. LOOK

### MEDICAL DEPT. DETACHMENT

Major N. M. BENYAS, M.C.  
Capt. ROBERT B. FAUS, M.C.  
Capt. KING C. CHOCK, M.C.  
Capt. RAYMOND F. KONG, M.C.  
Capt. MORONI R. WOOLLEY, D.C.

### HEADQUARTERS 1st BATTALION

Major FARRANT L. TURNER

### HEADQUARTERS CO., 1st BATTALION

1st Lieut. WARREN R. STARR  
2nd Lieut. LAKE E. BELLINGER

### COMPANY A

Capt. OLIVER H. KUPAU  
1st Lieut. W. L. CHAMBERLAIN  
2nd Lieut. JAMES W. LOVELL

### COMPANY B

1st Lieut. DAVID P. KAHANAMOKU  
1st Lieut. JOSEPH K. KAPUA

### COMPANY C

Capt. JAMES HO YAP  
1st Lieut. J. A. AI  
2nd Lieut. F. A. BUTTERFIELD

### COMPANY D

1st Lieut. NOHEA O. A. PECK  
1st Lieut. F. O. YOUNG  
2nd Lieut. M. A. NICOLL, Jr.

### HOWITZER COMPANY

1st Lieut. EMMET L. O'CONNOR  
2nd Lieut. J. D. HITCHCOCK  
2nd Lieut. JOHN F. CAIRES

### SERVICE COMPANY

Capt. ARTHUR C. HILLIGER  
1st Lieut. W. H. TILLEY  
2nd Lieut. D. H. FAIR  
2nd Lieut. A. L. MADDEN  
W. O. W. MERRICK (Band Leader)

### HEADQUARTERS, 2nd BATTALION

Major PAUL B. PORTER

### HEADQUARTERS CO., 2nd BATTALION

1st Lieut. A. H. CORNELISON  
2nd Lieut. B. N. FARDEN

### COMPANY E

Capt. CHARLES R. FRAZIER, Jr.  
1st Lieut. R. H. SMOOT  
2nd Lieut. M. A. HARKINS

### COMPANY F

Capt. JOHN C. SIMERSON  
1st Lieut. W. Y. KELIINOI  
2nd Lieut. F. H. KANAHELE

### COMPANY G

Capt. MARK O. CLEMENT  
2nd Lieut. S. K. CHILLINGWORTH  
2nd Lieut. M. F. WRIGHT

### COMPANY H

1st Lieut. SAMUEL L. KEALA  
2nd Lieut. M. K. MAKEKAU  
1st Lieut. DANIEL H. LANSING

## TWO HUNDRED AND NINETY-NINTH INFANTRY

Colonel GORDON C. ROSS, COMMANDING.

Lieut. Colonel HAMILTON MERRILL, Executive.

Captain Frederick T. Voorhees, S-1 & 2. Major Allen W. Smith, S-3.

Captain Nash A. Witten, Ass't S-3. Captain Robert F. Clarke, S-4.

1st Lieut. Albert H. Stone, Chaplain.

### HEADQUARTERS COMPANY

Capt. GERALD F. BITTLE  
2nd Lieut. C. C. WAITE

### HOWITZER COMPANY

Capt. E. F. EARL  
1st Lieut. G. D. BECKER  
2nd Lieut. L. W. BRYAN

**SERVICE COMPANY**

1st Lieut. W. C. POKA  
 1st Lieut. G. W. TIVY  
 2nd Lieut. C. J. GUARD  
 2nd Lieut. J. P. KING  
 W. O. CARLOS HANCEY (Band  
 Leader)

**HEADQUARTERS 1st BATTALION**

Major ALVIN K. SILVA

**HEADQUARTERS CO., 1st BATTALION**

1st Lieut. HENRY VINCENT  
 2nd Lieut. ALVIN T. STEENSRUD

**COMPANY A**

1st Lieut. FRANK A. ALAMEDA  
 1st Lieut. PHILIP F. LINDEMAN  
 2nd Lieut. B. L. FLEMING

**COMPANY B**

1st Lieut. E. P. LYDGATE  
 2nd Lieut. S. V. MCGERROW  
 2nd Lieut. J. E. LANE

**COMPANY C**

Capt.  
 1st Lieut. J. CRUICKSHANK  
 1st Lieut. J. G. ARAUJO  
 2nd Lieut. E. DAVIS

**COMPANY D**

Capt. WM. McK. WHITMAN  
 1st Lieut. G. T. COOPER  
 2nd Lieut. L. W. CROSBY

**MEDICAL DEPT. DETACHMENT**

Major ARCHIE ORENSTEIN, M.C.  
 Capt. ROBT. H. LEE, M.C. (Wailuku)  
 Capt. LESTER P. SORENSEN, D.C.  
 1st Lieut. BERNARD YUEN, M.C.  
 Capt. HENRY C. GOTSHALK, M.C.  
 (Honolulu)

**HEADQUARTERS 2nd BATTALION**

Major PETER N. PAKELE, Jr.

**HEADQUARTERS CO., 2nd BATTALION**

1st Lieut. HERBERT U. KAI  
 2nd Lieut. CHARLES A. BREMANAN

**COMPANY E**

Captain CHARLES J. BENDA  
 2nd Lieut. E. J. CONDON  
 2nd Lieut. A. H. CABRINHA

**COMPANY F**

Capt. CHARLES J. WARREN  
 1st Lieut. FRED L. HARTMAN  
 2nd Lieut. R. K. ELLIS

**COMPANY G**

Capt. EDMUND K. HOHU  
 1st Lieut. A. CHAVES  
 2nd Lieut. EMIL M. OSORIO

**COMPANY H**

Capt.  
 1st Lieut. D. W. LEGOULLON  
 2nd Lieut. G. G. RICHARDSON

---

**STATION DIRECTORY**

STATION	UNIT	STATION COMMANDER
Honolulu, Oahu	Terr. (State) Staff & Detach., 293th Inf.; Hq., Hq. Co., & Serv. Co., 299th Inf.	Colonel P. M. Smoot, Inf., The Adjutant General
Hilo, Hawaii	M.D.D., Hq. & Hq. Co., 2nd Bn., Cos. F & H, 299th Inf.	Major P. N. Pakele, Jr. 299th Inf.
Honoumuliuli, Hawaii	Howitzer Co., 299th Inf.	Capt. E. F. Earl, 299th Inf.
Papaikou, Hawaii	Co. E, 299th Inf.	Capt. C. J. Benda, 299th Inf.
Olaa, Hawaii	Co. G, 299th Inf.	Capt. E. K. Hohu, 299th Inf.
Wailuku, Maui	Hq. & Hq. Co., 1st Bn. Cos. B & D, 299th Inf.	Major A. K. Silva, 299th Inf.
Lahaina, Maui	Co. A, 299th Inf.	1st Lieut. F. A. Alameda, 299th Inf.
Paia, Maui	Co. C, 299th Inf.	1st Lieut. J. Cruickshank, 299th Inf.



## TELEPHONE DIRECTORY

The Adjutant General's Office .....	4668
Headquarters 298th Infantry .....	4668
Headquarters 2nd Bn., 299th Infantry .....	2207 (Hilo)
Headquarters 1st Bn., 299th Infantry .....	2W134 (Wailuku)
Department National Guard Officer .....	2306—Local #3
Headquarters Hawaiian Department .....	8531
Instructor, H. N. G. ....	4748
U. S. P. & D. Officer .....	3673

### OFFICERS' DIRECTORY

**Note:** The first address given is the business address; the second, the residence address. Numbers in parentheses indicate telephone numbers. Graduates of Army Schools are shown. The asterisk (\*) appearing before an Officer's name indicates that he has graduated from an Army Service School.

NAME	Rank and Assignments	Address and Phone
*AI, James A. Mrs. Ai	1st Lt., Co. C, 298th Inf.	USATS Pier #5 (2306-#7) 4103 Maunaloa Av., Hon.
ALAMEDA, Frank A. Mrs. Alameda	1st Lt., Co. A, 299th Inf.	Deputy Assessor, Maui, T. H. (2W894), Lahaina, Maui
*ANDERSEN, Wilhelm A. Mrs. Andersen	Colonel, 298th Inf., Ass't The Adjutant General (Gr. the Inf. School NG & Res. Field Off. Course 1931)	T. H. Davies & Co., Ltd., (3491) Insurance Dept., 3629 Mahina Av. (7708), Honolulu, T.H.
ARAUJO, J. G. Mrs. Araujo	1st Lt., Co. C, 299th Inf.	Haiku Pineapple Co., Haiku, Maui, T.H.
BECKER, George D. Mrs. Becker	1st Lt., How. Co., 299th Inf.	Honomu Sug. Co., (3W28) Honomu, Hawaii
BELL, Alfred K. Mrs. Bell	Capt. Inf. (Inactive)	Kamuela, Hawaii
BELLINGER, Lake E.	2nd Lt., Hq. Co., 1st Bn., 298th Inf.	Bishop National Bank of Hawaii, 3710 Mahina Av.
*BENDA, Charles J. Mrs. Benda	Capt., Co. E, 299th Inf., (Grad. the Chemical War- fare School, N.G. Line & Staff Officers Course 1932)	Waiakea Mill Co., (2785) 810 Kilauea Av. (2586) Waiakea, Hawaii
BENYAS, N. M. Mrs. Benyas	Major, Medical Corps, M.D.D., 298th Inf.	Alexander Young Building (2089), 2506 Upper Manoa Road (98609). Physicians' Exchange (98700)
*BEST, Henry L. Mrs. Best	Major, Inf., I.G.D., Terr. (State) Staff, (Grad. the Inf. Sch. N.G., & Res. Off. Co. Course 1931)	American Factors Ltd., (1241). 4850 Kahala Rd., (78358), Honolulu, T.H.
BILLSBOROUGH, C. L. Mrs. Billsborough	Capt., Corps of Engr., T.H.	3456 Keanu St. (7083), Ho- nolulu, T.H.
BITTLE, Gerald F. Mrs. Bittle	Capt., Hq. Co., 299th Inf.	Libby, McNeil & Libby, (8553). 1520 Alewa Drive (88807)
BOLTON, Edward M. Mrs. Bolton	Major, A.G.D., Terr. (State) Staff, H.N.G.	Oahu Sugar Co. (2W92) 233 Manager's Rd. (3W64) Waipahu

NAME	Rank and Assignments	Address and Phone
BRENAMAN, Charles J. Mrs. Brenaman	2nd Lt., Hq. Co., 2nd Bn., 299th Inf.	Hilo, Hawaii
BRYAN, Lester W. Mrs. Bryan	2nd Lt., How. Co., 299th Inf.	Board of Agriculture & Forestry (3198), Kilauea Av., Hilo, Hawaii (3180)
BUTTERFIELD, F. A. Mrs. Butterfield	2nd Lt., Co. C, 298th Inf.	Bishop National Bank of Hawaii. 1424 Keeaumoku St., Honolulu, T.H.
CABRINHA, August H. Mrs. Cabrinha	2nd Lt., Co. E, 299th Inf.	Eng. Office, County of Ha- waii. P.O. Box 291, Hilo, Hawaii
CAIRES, John F. Mrs. Caires	2nd Lt., How. Co., 298th Inf.	Union Trust Co. (1291) Pukalani Place, Hon., T.H.
CARTER, Melville L. Mrs. Carter	Capt. Inf. (Inactive), 299th Inf.	Bishop National Bank of Hawaii (2133), Keaukaha St. (2041)
CHAMBERLAIN, W. L.	1st Lt., Co. A, 298th Inf.	O. R. & L. Co. (Ranch), (2W67), McKinley St., Honolulu, T.H.
*CHANG, James T. M. Mrs. Chang	Capt. Inf., S.S. Property Off. (Grad. The Inf. School NG & Res. Off. Co. Course, 1933)	The Adjutant General's Of- fice (4668). 2156 Bingham St. (92001) Honolulu, T.H.
CHAVES, A. Mrs. Chaves	1st Lt., Co. G, 299th Inf.	Hawaii Con. Railway, Ltd., Olaa, Hawaii, T.H.
CHILLINGWORTH, S. K.	2nd Lt., Co. G, 298th Inf.	T. H. Davies & Co., Ltd., (3491) Ins. Dept. 2336 Oahu Av. (98042) Honolulu, T.H.
CHILLINGWORTH, W. S. Mrs. Chillingworth	Major, S-3, 298th Inf.	1st Judicial Circuit Court (2146), Honolulu, T.H. 2336 Oahu Av. (98042)
CHOCK, King C. Mrs. Chock	Capt., M.C., Med. Dept. Detach., 298th Inf.	68 Vineyard St. (3941) 1440 Liholiho St. (5427) Phy. Ex. (98700) Honolulu, T.H.
CLARKE, Robert F. Mrs. Clarke	Capt., S-4, 299th Inf.	Dept. Public Wks (1211). 1041 Lunalilo St. (3105), Honolulu, T.H.
CLEMENT, MARK O. Mrs. Clement	Capt., Co. G, 298th Inf.	U.S.N. Air Base Laundry (O-P.H). 3008 Haunani St. (77190), Honolulu, T.H.
CONDON, Edward J.	2nd Lt., Co. E, 299th Inf.	Hilo Iron Wks. (2151) Ha- lealani Place, Hilo
COOPER, George T. Mrs. Cooper	1st Lt., Co. D, 299th Inf.	Eng. Dept., Maui County (2W260), Wailuku, Maui, T.H.
CORNELISON, Alex H. Mrs. Cornellison	1st Lt., Hq. Co., 2nd Bn.	Pacific Guano & Fertilizer Co. (5798), 2536 Manoa Rd.
CROSBY, L. E.	2nd Lt., Co. D, 299th Inf.	Wailuku, Maui, T.H.
CRUICKSHANK, James Mrs. Cruickshank	1st Lt., Co. C, 299th Inf.	Haiku Pineapple Co., (2W617) Haiku, Maui, T.H. (2W515)
DAVIS, Emil	2nd Lt., Co. C, 299th Inf.	Maui Agricultural Co., (3W586), Haiku, Maui, T. H. (4W649)
*deVILLE, Joseph I. Mrs. deVille	Capt., Inf., (Inactive) 298th Inf., Ass't S-2, (Grad. Inf. School, NG & Res. Co. Off. Course 1929)	Federal Building (4078), 156 Uluniu Av. (91857), Honolulu, T.H.
DUNHAM, Walter R. Mrs. Dunham	Lt. Col., Governor's Staff, Aide to the Governor	Office of the Secretary to the Governor (1211) 3264 Oahu Av. (98500) Hono- lulu, T.H.

NAME	Rank and Assignments	Address and Phone
EARL, E. F.	Capt., How. Co., 299th Inf.	Onomea Sugar Co. (2W20) Papaikou, Hawaii, T.H.
ELLIS, Richmond K. Mrs. Ellis	2nd Lt., Co. F, 299th Inf.	Haw. Cane Products Ltd. 2118 Laukapu St., Hilo, Hawaii, T.H.
FAIR, David R.	2nd Lt., Serv. Co., 298th Inf.	The von Hamm-Young Co., Ltd., (2W297) Wahiawa, (2W240)
FARDEN, Bernard N. Mrs. Farden	2nd Lt., Hq. Co., 2nd Bn., 298th Inf.	Oahu Prison (8071), 711 Prospect St. (4451), Hono- lulu, T.H.
*FAUS, Robert B.	Capt., M.C., M.D.D., 298th Inf., (Grad. The Medical School, Field Off. 1926)	Haw. Elect. Bldg. (3707) 311 Ferdinand (98505) Ho- nolulu, T.H.
FLEMING, Bruce L.	2nd Lt., Co. A, 299th Inf.	Baldwin Packers, Ltd., (2W874) Lahaina, Maui, T. H.
FRAZIER, C. R., Jr. Mrs. Frazier	Capt., Co. E, 298th Inf.	305-6-7, Stangenwald Bldg. (2049) 3804-D Mamalahoa Rd. (69307) Honolulu, T.H.
GOTSHALK, Henry C. Mrs. Gotshalk	Capt., M.C., M.D.D., 299th Inf.	30 Young Bldg. (2404) Niu- malu Hotel, Honolulu, T.H.
GUARD, Carl J. Mrs. Guard	2nd Lt., Serv. Co., 299th Inf.	Board of Water Supply (6161), 1224 Wilder Av.
HANCEY, Carlos Mrs. Hancey	Warrant Officer (Band Leader) 299th Inf.	Kalakaua Jr. High School (8484), 264-B Kaiulani Av.
HARKINS, Melvin A. Mrs. Harkins	2nd Lt., Co. E, 298th Inf.	U.S. Navy Yard, Pearl Har- bor, 2449-D Cleghorn Dr.
*HARTMAN, Fred L. Mrs. Hartman	1st Lt., Co. F, 299th Inf. (Grad. Sig. Sch. 1931)	American Factors, Ltd., (2111), 408 Wailuku St. (2741) Hilo, Hawaii
HILLIGER, Arthur C. Mrs. Hilliger	Capt., Serv. Co., 298th Inf.	Broker, 925 Fort St. (1012) 2117 Armstrong St. (98959) Honolulu, T.H.
HITCHCOCK, Joshua D. Mrs. Hitchcock	2nd Lt., How. Co., 298th Inf.	H. D. Co. (6127), 1017 6th Av., Honolulu, T.H.
HOHU, Edmund K. Mrs. Hohu	Capt., Co. G, 299th Inf.	Olaa Sugar Co., 12W4 Olaa, 143 Laukapu St. (2252) Hilo, Hawaii
HOOPAI, William Mrs. Hoopai	Lt. Col., 298th Inf., Ex. Off.	Ass't Chief of Police (6231), 1941 Kealakai Av. (88864) Honolulu, T.H.
IGNACIO, Frank W. Mrs. Ignacio	1st Lt., Inf. (Inactive) 299th Inf.	Papaikou Grammar School, Papaikou, Hawaii
JONES, Rolland I. Mrs. Jones	1st Lt., Hq. Co., 298th Inf.	Haw. Electric Co. (3431) 4080-A Black Point Rd. (78255) Kahala, Oahu, T.H.
JUDD, Henry P. Mrs. Judd	Major (Chaplain), 298th Inf.	University of Hawaii. 2021 Kekela St. (98457) Honolulu, T.H.
KAHANAMOKU, D. P. Mrs. Kahanamoku	1st Lt., Co. B, 298th Inf.	Kahanamoku's Haw'n Ex- change (92332), Seaside Hotel, C. W. Bartlett's Place, Manoa, Hon., T.H.
KAI, Herbert U. Mrs. Kai	1st Lt., Hq. Co., 2nd Bn., 299th Inf.	County Auditor's Office (2491), 418 Waiianuenu Av., Hilo, Hawaii
KANAHELE, Francis H. Mrs. Kanahele	2nd Lt., Co. F, 298th Inf.	Terr. Surveyor's Office (1211), 123 Bates St.
KAPUA, Joseph K.	1st Lt., Co. B, 298th Inf.	Oahu Prison (8071), 3419 Kaau St. (79051), Honolulu, T.H.

NAME	Rank and Assignments	Address and Phone
KEALA, Samuel L. Mrs. Keala	1st Lt., Co. H, 298th Inf.	Bureau of Plans C. & C. (6161), 2121 Dole St.
KELIINOI, Wm. Y.	1st Lt., Co. F, 298th Inf.	Old Kamehameha Farm
KING, John P. Mrs. King	2nd Lt., Service Co., 299th Inf.	Bureau of Crime, Stat. Bd. of Prison Directors (6231) 6th and Pahoia Av., Hono- lulu, T.H.
KONG, Raymond F. Mrs. Kong	Capt., M.C., M.D.D., 298th Inf.	1231 S. Beretania St. (3767) 2167 Ala-Wai Blvd. (92163)
*KUPAU, Oliver H. Mrs. Kupau	Capt., Co. A, 298th Inf., (Grad. The Inf. Sch. NG & Res. Off. Co. Course 1927)	Pearl Harbor, Fleet Air Base; 2424 Rose St.
LANSING, Daniel H. Mrs. Lansing	1st Lt., Co. H, 298th Inf.	1865-C Elena Lane, Hono- lulu, T.H.
LEE, Robert H. Mrs. Lee	Capt., M.C., M.D.D., 299th Inf.	Wailuku, 2W69, (2W69) Maui
LeGOULLON, Donald W. Mrs. LeGoullon	1st Lt., Co. H, 299th Inf.	Onomea Sugar Co. (2W30) Papaikou, Hawaii, Box 146
LINDEMAN, Philip F. Mrs. Lindeman	1st Lt., Co. A, 299th Inf.	American Can Co. (2W317) Kahului, Maui
LOOK, Kenneth L. Mrs. Look	2nd Lt., Hq. Co., 298th Inf.	Haw'n Electric Co., (3431) 1010 2nd Av., Honolulu, T.H. (79506)
LOVELL, James W. Mrs. Lovell	2nd Lt., Co. A, 298th Inf.	Roosevelt High School (5839), 1526 Hastings St. (2904)
LYDGATE, E. P. Mrs. Lydgate	1st Lt., Co. B, 299th Inf.	Maui Pineapple Co. (3W601) Paia, Maui, (4W605)
MADDEN, Arthur L. Mrs. Madden	2nd Lt., Service Co., 298th Inf.	Libby, McNeill & Libby (8553); 2378 University Av. (98296)
MAKEKAU, Manase K.	2nd Lt., Co. H, 298th Inf.	Haw'n Pineapple Co. (4931), 2020 Kaunualii St., Honolulu, T.H.
McELDOWNEY, Robt. R.	Capt., S-1 & S-2, 298th Inf.	Haw'n Trust, Ins. Dept. (1256), Nuuanu and Judd Sts. (3542)
McGERROW, Samuel V. Mrs. McGerrow	2nd Lt., Co. B, 299th Inf.	Haleakala Motors, (2W325), P.O. Box 633 Wailuku, Maui, T.H.
McGHEE, Earl R. Mrs. McGhee	Capt., J.A.D., Terr. Staff, H.N.G.	Arcade Building (5882), 2627 E. Manoa Rd. (98044) Honolulu, T.H.
McINERNY, George T. Mrs. McInerny	Capt. (Inactive), Co. M, 299th Inf.	Judd St., Honolulu, T.H.
McLEAN, William D.	Adjutant, Vet's Old Guard	P.O. Box 1971, Honolulu, T.H.
MERRICK, William F. Mrs. Merrick	Warrant Officer (Band Leader) 298th Inf.	Roosevelt High School (5839), 1633 S. King St., Honolulu, T.H. (78027)
MERRILL, Hamilton Mrs. Merrill	Lt. Col., Ex-Officer, 299th Inf.	Dept. Warden, Oahu Pris- on (8071), Honolulu, T.H.
MODISSETT, Benjamin F.	Capt., Ass't S-3, 298th Inf.	USATS Pier #5, (2306-#9), 1423 Lusitana St., Honolulu, T.H.
*MORONG, Frederic L. Mrs. Morong	Major, M.C. Terr. Staff (Grad. the Med. School F. O. 1928)	1140 Alakea St. (2481) 2554 Liliha St., Honolulu, T.H.
NATHANIEL, Daniel H. Mrs. Nathaniel	Capt. (Inactive), Co. K, 299th Inf.	Terr. Tax Office (2491), 117 Kaaue St., Hilo, Ha- waii, T.H.

NAME	Rank and Assignments	Address and Phone
NICOLL, Melvin A., Jr. Mrs. Nicoll	2nd Lt., Co. D, 298th Inf.	833 Alakea St. (2228) 253-A Lewers Rd., Honolulu, T.H.
O'CONNOR, Emmet L. Mrs. O'Connor	1st Lt., How. Co., 298th Inf.	Liquor Insp. Off. (4735) Kailua, Oahu, T.H.
*OLDS, Clarence J. Mrs. Olds	Capt. S-4, 298th Inf. (Grad. The Inf. School, N.G. & Res. Off. Co. Course 1927)	Ii Estate (4703) Kalania-naole Highway, (78518) Kuliouou, Oahu, T.H.
ORENSTEIN, Archie Mrs. Orenstein	Major, M.C., M.D.D., 299th Inf.	Kinoole St. (2716) 309 Kaula St., (2849) Hilo, Hawaii
OSORIO, Emil M. Mrs. Osorio	2nd Lt., Co. G, 299th Inf.	Hilo Water Works (2780) 674 Kinoole St. (3106) Hilo
*PAKELE, Peter N., Jr. Mrs. Pakele	Major, C.O. 2nd Bn., 299th Inf. (Grad. Inf. Sch. N.G. & Res. Off. 1926)	Deputy Sheriff (2776) Kawaii St. (3179) Hilo, Hawaii, T.H.
PECK, Nohea O. A. Mrs. Peck	1st Lt., Co. D, 298th Inf.	Haw'n Elect. (3431) Maunaloa Av.
PICKERILL, Orville A. Mrs. Pickerill	Capt., Inf. (Inactive), 299th Inf.	Hawaii Meat Co. (1065) Donna Hotel
POINDEXTER, Joseph B. Miss Poindexter	Commander-in-Chief, H.N.G.	Executive Chambers (1213), Washington Place (5037), Honolulu, T.H.
POKA, William C. Mrs. Poka	1st Lt., Serv. Co., 299th Inf.	287 Kalihi St., Honolulu, T.H.
PORTER, Paul B. Mrs. Porter	Major, C.O. 2nd Bn., 298th Inf.	Patten Co., Ltd. (5741) 815 17th Av., Honolulu, T.H. (7549)
RICHARDSON, Geo. G.	2nd Lt., Co. H, 299th Inf.	Waiakea Mill Co. (2785) Kilauea Av. (3172) Hilo, Hawaii.
*ROSS, Gordon C. Mrs. Ross	Colonel, C.O., 299th Inf. (Grad. Inf. School N.G. & Res. Off. Co. Course 1923)	C. Brewer & Co. (6261) 1238 Wilhelmina Rise (7259) Honolulu, T.H.
ROTHWELL, Guy N. Mrs. Rothwell	Commander, H.N.M., Governor's Staff, Aide-de-Camp.	Wright, Harvey & Wright (3005) Hillside Av., Honolulu, T.H.
SAMSON, Walter H. Mrs. Samson	Capt., Inf. (Inactive), 298th Inf.	Board of Water Supply (6161) 2610 Halelenua St., Honolulu, T.H.
SCRUTON, Gordon H. Mrs. Scruton	1st Lt. Inf. (Inactive) 299th Inf.	Chamber of Commerce (2583) 413 Wainaku Av. (2290), Hilo
*SILVA, Alvin K. Mrs. Silva	Major, C.O., 1st Bn., 299th Inf. (Grad. The Inf. Sch. N.G. & Res. Off. Co. Course 1933)	Wailuku Sugar Co., (2W2) Wailuku, Maui, T.H. (3W206)
*SIMERSON, John C. Mrs. Simerson	Capt., Co. F, 298th Inf. (Grad. The Inf. Sch. N.G. & Res. Off. Co. Course, 1935)	Dept. of Pub. Instr. T.H., (1211) 216-C Liliuokalani Av., Honolulu, T.H.
SMITH, Allen W. Mrs. Smith	Major, S-3, 299th Inf. (Grad. U.S. Mil. Academy, 1923)	W. A. Ramsay Co., (2345) 4335 Royal Palace (78441) Honolulu, T.H.
*SMOOT, Perry M. Mrs. Smoot	Col., Inf. The Adjutant General of Hawaii, & Chief of Staff (Grad C. & G. S. Sch. 1926; Army War College G. 1 & 2 Courses, 1927; The Inf. Sch. N.G. & Res. Off. F. O. Course 1932)	The Adjutant General's Office (4668), 820 15th Av. (77894) Honolulu, T.H.
SMOOT, Richard H. Mrs. Smoot	1st Lt. Co. E, 298th Inf.	Bank of Hawaii (5711), 958 12th Av. (78814), Honolulu, T.H.

NAME	Rank and Assignments	Address and Phone
SORENSEN, Lester P. Mrs. Sorensen	Capt., D.C., M.D.D., 299th Inf.	109 Kamehameha Av. (2254), 406 Wailuku Av. (2448) Hilo.
STARR, Warren R.	1st Lt., Hq. Co., 1st Bn., 298th Inf.	Lewers & Cooke, Ltd. (1265), 2347 University Av., Honolulu, T.H.
STEENSRUD, Alvin T. Mrs. Steensrud	2nd Lt., Hq. Co., 2nd Bn., 299th Inf.	Kahului Store, Kahului, (2W108) Spreckelsville, Maui, T.H.
STONE, Albert H. Mrs. Stone	1st Lt. (Chaplain), 299th Inf.	H'dmaster, Iolani School, (4332), Nuuanu & Judd St. (65194) Honolulu, T.H.
TILLEY, William H. Mrs. Tilley	1st Lt., Serv. Co., 298th Inf.	1st Cir. Court (5777), 1741 15th Av., Honolulu, T.H. (78950)
TIVY, George W. Mrs. Tivy	1st Lt., Serv. Co., 299th Inf.	W. A. Ramsay, Ltd. (2345) 23-A Ilima Drive (88911)
TURNER, Farrant L. Mrs. Turner	Major, C.O. Hq. 1st Bn., 298th Inf.	Lewers & Cooke, Ltd. (1261), 1054 Spencer St. (68820)
VINCENT, Henry Mrs. Vincent	1st Lt., Hq. Co., 1st Bn., 299th Inf.	C. P. C. (2W301) Kahului, Wailuku, Maui, T.H.
VIVAS, Louis M.	Capt., Q.M.C., Terr. Staff	Navy Yard, 1233-G, 1856 D. Elana St., Honolulu, T.H.
VOORHEES, Frederick T. Mrs. Voorhees	Capt., S-1 & 2, 299th Inf.	Matson Navigation Co. (1221), 2134 Lanihuli Dr. (98167)
WAITE, Christopher C. Mrs. Waite	2nd Lt., Hq. Co., 299th Inf.	Star-Bulletin (4911) 1814 Poki St. (65602), Honolulu, T.H.
WARREN, Charles J. Mrs. Warren	Capt., Co. F, 299th Inf.	Hilo Police Dept., Hilo, Hawaii, T.H.
WHITMAN, Wm. McK. Mrs. Whitman	Capt., Co. D, 299th Inf.	Wailuku Sugar Co. (2W2) Wailuku, Maui, T.H.
WITTEN, Nash A. Mrs. Witten	Capt., Ass't S-3, 299th Inf.	Star-Bulletin (4911), 28-B Ilima Drive
WONG, Gilbert L. H. Mrs. Wong	2nd Lt. (Inactive), 299th Inf.	Dept. of Pub. Instr., 2120 Bingham St., Honolulu, T.H.
WOOLLEY, Moroni R. Mrs. Woolley	Capt., D.C., M.D.D., 298th Inf.	Young Building (5576), 2524 Oahu Av. (98000), Ho- nolulu, T.H.
WRIGHT, M. F.	2nd Lt., Co. G, 298th Inf.	Honolulu Iron Works (1201), 3137 Oahu Av., Ho- nolulu, T.H.
XAVIER, Francis Mrs. Xavier	Major, Ord. Dept., Terr. Staff	The Adjutant General's Of- fice (4668), Punchbowl Reservation (3501), Hono- lulu, T.H.
YAP, James Ho Mrs. Yap	Capt., Co. C, 298th Inf.	Schuman Carriage Co., (4975), 1314 Farrington St.
YOUNG, Fred O. Mrs. Young	1st Lt., Co. D, 298th Inf.	U.S. Engr. Off. (P.W.A.) 2817 Tantalus Drive (5791 or 3A55)
YUEN, Henry B. Mrs. Yuen	1st Lt., M.C., M.D.D., 299th Inf.	Kinoole St. (3126) Hilo, Hawaii, T.H.

Relative rank of Officers of the Hawaii National Guard, arranged according to the length of service in present appointment. (NGR-35) totals represent all commissioned service in all grades as counted for longevity purposes, computed to include June 30, 1935.

Rel. No.	Name	Date of Federal Recognition	Total Commissioned Service		
			Yr.	Mo.	Days
<b>Colonels</b>					
1.	Smoot, Perry M.	Oct. 11, 1923	23	6	17
2.	Andersen, Wilhelm A.	July 1, 1929	16	0	11
3.	Ross, Gordon C.	Feb. 6, 1934	15	3	0
<b>Lieutenant Colonels</b>					
1.	Hoopai, William	Jan. 15, 1925	16	10	18
2.	Merrill, Hamilton	May 22, 1934	11	9	9
<b>Majors</b>					
1.	Benyas, Nathan M.	July 16, 1922	16	7	12
2.	Chillingworth, Wm. S.	July 3, 1924	22	1	16
3.	Pakele, Peter N., Jr.	Jan. 1, 1927	12	9	5
4.	Bolton, Edward M.	Oct. 18, 1927	17	0	8
5.	Morong, Frederic L.	Nov. 15, 1927	19	10	13
6.	Judd, Henry P.	May 25, 1928	15	8	16
7.	Turner, Farrant L.	Aug. 16, 1929	13	3	22
8.	Orenstein, Archie	Dec. 11, 1930	4	6	21
9.	Best, Henry L.	Oct. 1, 1931	13	5	21
10.	Porter, Paul B.	April 18, 1934	11	6	4
11.	Smith, Allen W.	May 7, 1934	11	8	5
12.	Xavier, Francis	Jan. 9, 1935	13	5	0
13.	Silva, Alvin K.	Feb. 11, 1935	9	8	21
<b>Captains</b>					
1.	Yap, James Ho	Sept. 14, 1920	18	9	27
2.	Faus, Robert B.	Sept. 16, 1925	13	0	16
3.	Kupau, Oliver H.	Nov. 1, 1926	12	10	1
4.	Olds, Clarence J.	Nov. 15, 1926	14	3	13
5.	Hohu, Edmund K.	Jan. 1, 1927	12	2	12
6.	Warren, Charles J.	April 25, 1927	9	8	14
7.	Hilliger, Arthur C.	April 19, 1929	10	3	0
8.	Benda, Charles J.	Sept. 3, 1929	7	9	29
9.	McEldowney, Robert R.	Dec. 17, 1929	13	11	18
10.	Chock, King C.	April 4, 1930	7	4	12
11.	Kong, Raymond F.	April 4, 1930	7	4	12
12.	Lee, Robert H.	April 15, 1930	6	2	17
13.	Chang, James T. M.	May 6, 1930	10	3	0
14.	Simerson, John C.	May 7, 1931	7	5	23
15.	McGhee, Earl R.	Sept. 1, 1931	9	7	14
16.	Clement, Mark O.	Jan. 1, 1932	7	2	17
17.	Modisett, Benjamin F.	Jan. 1, 1933	7	0	6
18.	Vivas, Louis M.	April 15, 1933	10	3	0
19.	Woolley, Moroni R.	Jan. 1, 1934	2	8	0
20.	Sorensen, Lester P.	Mar. 1, 1934	12	0	18
21.	Bittle, Gerald F.	May 1, 1934	8	10	23
22.	Clarke, Robert F.	May 2, 1934	2	9	29
23.	Frazier, Charles R., Jr.	Jan. 1, 1935	5	11	25
24.	Witten, Nash A.	Mar. 4, 1935	9	5	12
25.	Voorhees, Frederick T.	Mar. 4, 1935	1	1	22
26.	Whitman, Wm. McK.	Mar. 6, 1935	4	0	29
27.	Earl, Ewin F.	April 3, 1935	6	9	27
28.	Gotshalk, Henry C.	April 8, 1935	1	4	0
<b>FIRST LIEUTENANTS</b>					
1.	Kahanamoku, David P.	Nov. 9, 1927	10	10	11
2.	Hartman, Fred L.	Aug. 1, 1928	7	9	29

Rel. No.	Name	Date of Federal Recognition	Total Commissioned Service		
			Yr.	Mo.	Days
3.	Keala, Samuel L.	Nov. 15, 1928	7	10	20
4.	Kai, Herbert U.	Sept. 12, 1929	8	6	29
5.	Poka, William C.	Dec. 17, 1929	8	4	1
6.	Ai, James A.	May 7, 1930	7	5	25
7.	Keliinoi, William Y.	May 15, 1930	7	11	29
8.	O'Connor, Emmet L.	Feb. 17, 1931	5	8	6
9.	Tilley, William H.	Mar. 18, 1931	9	4	3
10.	Yuen, Henry B.	April 1, 1931	4	3	0
11.	Chaves, Alverinos	Aug. 4, 1931	9	5	29
12.	Lansing, Daniel H.	Jan. 1, 1932	5	7	28
13.	Cornellson, Alex H.	Jan. 1, 1933	7	8	16
14.	Becker, George D.	Aug. 2, 1933	4	3	11
15.	LeGoullon, Donald W.	Oct. 2, 1933	4	0	7
16.	Cooper, George T.	Nov. 11, 1933	4	9	9
17.	Alameda, Frank A.	Nov. 17, 1933	3	0	28
18.	Jones, Rolland I.	Jan. 1, 1934	6	7	25
19.	Lindeman, Phillip F.	Jan. 1, 1934	4	4	27
20.	Cruickshank, James	Feb. 1, 1934	5	5	15
21.	Stone, Albert H.	Mar. 12, 1934	2	10	15
22.	Vincent, Henry	April 2, 1934	12	0	4
23.	Peck, Nohea O. A.	Sept. 11, 1934	7	4	4
24.	Lydgate, E. P.	Dec. 15, 1934	0	0	0
25.	Smoot, Richard H.	Jan. 1, 1935	3	6	0
26.	Araujo, Jacinth G.	Mar. 12, 1935	5	7	11
27.	Tivy, George W.	May 10, 1935	2	0	2
28.	Young, Fred O.	May 27, 1935	6	7	2
29.	Kapua, Joseph K.	June 12, 1935	4	2	0
30.	Chamberlain, Warren L.	June 12, 1935	2	4	28
31.	Starr, Warren R.	June 12, 1935	2	1	28

#### SECOND LIEUTENANTS

1.	Makekau, Manase K.	April 15, 1930	5	2	27
2.	Farden, Bernard N.	Oct. 13, 1930	5	11	1
3.	Madden, Arthur L.	Jan. 1, 1932	7	6	14
4.	Condon, Edward J.	Jan. 1, 1933	2	6	0
5.	Fleming, Bruce L.	April 12, 1933	2	11	0
6.	Ellis, Richmond K.	May 2, 1933	2	1	29
7.	Bryan, Lester W.	May 23, 1933	2	1	8
8.	Richardson, George C.	May 23, 1933	2	1	8
9.	Hitchcock, Joshua D.	Oct. 31, 1933	2	0	0
10.	Kanahele, Francis H.	Dec. 2, 1933	1	6	29
11.	Brenaman, Charles A.	Jan. 15, 1934	2	10	22
12.	Waite, Christopher C.	Feb. 2, 1934	1	4	29
13.	Davis, Emil	Feb. 15, 1934	1	9	29
14.	Fair, David R.	Feb. 20, 1934	2	3	1
15.	King, John P.	May 2, 1934	1	2	20
16.	Harkins, Melvin A.	April 10, 1934	1	2	20
17.	Guard, Carl J.	May 2, 1934	1	2	12
18.	Chillingworth, Selden K.	June 9, 1934	1	0	24
19.	Caires, John F.	June 9, 1934	1	0	24
20.	Osorio, Emil M.	July 7, 1934	4	6	21
21.	Cabrinha, A. H.	July 7, 1934	4	6	15
22.	Wright, M. F.	Oct. 26, 1934	0	8	4
23.	Butterfield, Frank A.	Nov. 2, 1934	0	7	28
24.	Crosby, L. W.	Jan. 1, 1935	0	6	0
25.	Bellinger, Lake E.	Jan. 3, 1935	0	5	27
26.	McGerrow, S. V.	Jan. 16, 1935	0	5	14
27.	Steensrud, Alvin T.	Apr. 25, 1935	0	2	7
28.	Lane, Junius E.	May 27, 1935	0	1	24
29.	Lovell, James W.	May 10, 1935	0	1	21
30.	Look, Kenneth L.	May 10, 1935	0	1	21
31.	Nicoll, Melvin A., Jr.	May 11, 1935	0	1	20



**RELATIVE RANK OF OFFICERS OF THE HAWAII NATIONAL GUARD,**  
arranged according to length of service and active Federal Duty Status, in  
accordance with the provisions of M. B. Cir. No. 7-A, dated March 1, 1928.

Rel. No.	Name		Total Commissioned Service		
			Yr.	Mo.	Days
<b>COLONELS</b>					
1.	Smoot, Perry M.	Infantry	1	6	22
2.	Andersen, Wilhelm A.	298th Infantry	0	5	13
3.	Ross, Gordon C.	299th Infantry	0	0	17
<b>LIEUTENANT-COLONELS</b>					
1.	Hoopai, William	298th Infantry	0	4	21
2.	Merrill, Hamilton	299th Infantry	0	0	17
<b>MAJORS</b>					
1.	Benyas, Nathan M.	Medical Corps	2	7	16
2.	Chillingworth, William S.	298th Infantry	0	10	0
3.	Morong, Frederic L.	Medical Corps	0	5	23
4.	Pakele, Peter N., Jr.	299th Infantry	0	4	19
5.	Bolton, Edward M.	Adj. Gen. Dept.	0	5	1
6.	Judd, Henry P.	Chaplain	0	3	15
7.	Turner, Farrant L.	298th Infantry	0	2	24
8.	Orenstein, Archie	Medical Corps	0	2	1
9.	Best, Henry L.	Infantry (I. G. D.)	0	1	15
10.	Porter, Paul B.	298th Infantry	0	0	15
11.	Smith, Allen W.	299th Infantry	0	0	17
12.	Xavier, Francis	Ord. Dept. H.N.G.	0	0	0
13.	Silva, Alvin K.	299th Infantry	0	0	0
<b>CAPTAINS</b>					
1.	Yap, James Ho	298th Infantry	0	11	1
2.	Kupau, Oliver H.	298th Infantry	0	10	13
3.	Olds, Clarence J.	298th Infantry	0	8	25
4.	Warren, Charles J.	299th Infantry	0	7	11
5.	Hohu, Edmund K.	299th Infantry	0	7	0
6.	Simerson, John C.	298th Infantry	0	6	28
7.	Chang, James T. M.	298th Infantry	0	6	13
8.	Benda, Charles J.	299th Infantry	0	6	4
9.	Faus, Robert B.	Medical Corps	0	5	3
10.	Hilliger, Arthur C.	298th Infantry	0	4	20
11.	McEldowney, Robert R.	298th Infantry	0	2	24
12.	Chock, King C.	Medical Corps	0	2	15
13.	Kong, Raymond F.	Medical Corps	0	2	15
14.	Lee, Robert H.	Medical Corps	0	2	15
15.	Sorensen, Lester P.	Dental Corps	0	2	16
16.	Clement, Mark O.	298th Infantry	0	1	24
17.	Vivas, Louis M.	Qmstr. Corps	0	1	20
18.	McGhee, Earl R.	Qmstr. Corps	0	2	0
19.	McInerny, George T.	299th Infantry	0	1	15
20.	Bittle, Gerald F.	299th Infantry	0	1	17
21.	Modisett, Benjamin F.	298th Infantry	0	1	0
22.	Woolley, Moroni R.	Dental Corps	0	0	15
23.	Clarke, Robert F.	299th Infantry	0	0	15
24.	Earl, E. F.	299th Infantry	0	0	0
25.	Witten, Nash A.	299th Infantry	0	0	0
26.	Voorhees, F. T.	299th Infantry	0	0	0
27.	Whitman, Wm. McK.	299th Infantry	0	0	0
28.	Gotshalk, Henry C.	299th Infantry	0	0	0
<b>FIRST LIEUTENANTS</b>					
1.	Vincent, Henry	299th Infantry	2	3	6
2.	Stone, Albert H.	Chaplain	1	10	5

Rel. No.	Name		Total Commissioned Service		
			Yr.	Mo.	Days
3.	Hartman, Fred L.	299th Infantry	0	7	22
4.	Tilley, William H.	298th Infantry	0	3	24
5.	Kahanamoku, David P.	298th Infantry	0	3	0
6.	Kai, Herbert U.	299th Infantry	0	3	0
7.	Poka, William C.	299th Infantry	0	2	26
8.	Keala, Samuel K.	298th Infantry	0	2	15
9.	Ai, James A.	298th Infantry	0	2	15
10.	Keliinoi, William Y.	298th Infantry	0	2	15
11.	O'Connor, Emmet L.	298th Infantry	0	2	0
12.	Chaves, Alverinos	299th Infantry	0	2	0
13.	Lansing, Daniel H.	298th Infantry	0	1	24
14.	Yuen, Henry B.	Medical Corps	0	0	15
15.	Cornelison, Alex H.	298th Infantry	0	1	0
16.	Becker, George D.	299th Infantry	0	0	15
17.	LeGoullon, Donald W.	299th Infantry	0	0	16
18.	Cooper, George T.	299th Infantry	0	0	15
19.	Alameda, Frank A.	299th Infantry	0	0	15
20.	Jones, Rolland I.	298th Infantry	0	0	15
21.	Lindeman, Philip F.	299th Infantry	0	0	15
22.	Cruikshank, James	299th Infantry	0	0	15
23.	Lydgate, E. P.	299th Infantry	0	0	0
24.	Peck, Nohea O. A.	298th Infantry	0	0	0
25.	Smoot, Richard H.	298th Infantry	0	0	0
26.	Araujo, Jacinth G.	299th Infantry	0	0	0
27.	Tivy, George W.	299th Infantry	0	0	0
28.	Young, Fred O.	298th Infantry	0	0	0
29.	Kapua, Joseph K.	298th Infantry	0	0	0
30.	Chamberlain, Warren L.	298th Infantry	0	0	0
31.	Starr, Warren R.	298th Infantry	0	0	0

#### SECOND LIEUTENANTS

1.	Farden, Bernard N.	298th Infantry	0	2	8
2.	Makekau, Manase K.	298th Infantry	0	2	0
3.	Condon, Edward J.	299th Infantry	0	1	15
4.	Madden, Arthur L.	298th Infantry	0	0	15
5.	Fleming, Bruce L.	299th Infantry	0	1	0
6.	Ellis, Richmond K.	299th Infantry	0	1	0
7.	Bryan, Lester W.	299th Infantry	0	1	0
8.	Richardson, George G.	299th Infantry	0	1	0
9.	King, John P.	299th Infantry	0	1	1
10.	Guard, Carl J.	299th Infantry	0	1	1
11.	Hitchcock, Joshua D.	298th Infantry	0	0	15
12.	Kanahele, Francis H.	298th Infantry	0	0	15
13.	Brenaman, Charles A.	299th Infantry	0	0	16
14.	Waite, Christopher C.	299th Infantry	0	0	17
15.	Davis, Emil	299th Infantry	0	0	15
16.	Fair, David R.	298th Infantry	0	0	15
17.	Harkins, Melvin A.	298th Infantry	0	0	15
18.	Chillingworth, Selden K.	298th Infantry	0	0	15
19.	Osorio, Emil M.	299th Infantry	0	0	16
20.	Caires, John F.	298th Infantry	0	0	15
21.	Cabrinha, A. H.	299th Infantry	0	0	16
22.	Wright, Marshall F.	298th Infantry	0	0	0
23.	Butterfield, Frank A.	298th Infantry	0	0	0
24.	Crosby, L. W.	299th Infantry	0	0	0
25.	Bellinger, Lake E.	298th Infantry	0	0	0
26.	McGerrow, Samuel V.	299th Infantry	0	0	0
27.	Steenrud, Alvin T.	299th Infantry	0	0	0
28.	Lane, Junius E.	299th Infantry	0	0	0
29.	Lovell, James W.	298th Infantry	0	0	0
30.	Look, Kenneth L.	298th Infantry	0	0	0
31.	Nicoll, Melvin A., Jr.	298th Infantry	0	0	0

**OFFICERS, INACTIVE, NATIONAL GUARD OF U. S.**

Rank	Name	Assignment
Captain	Carter, Melville L.	Company I, 299th Infantry
Captain	Bell, Alfred K.	S-2
Captain	deVille, Joseph I.	S-2 278
Captain	McInerny, George T.	Company M, 299th Infantry
Captain	Pickerill, Orville A.	Company L, 299th Infantry
Captain	Nathaniel, Daniel H.	Company K, 299th Infantry
Captain	Samson, Walter H.	Company M, 298th Infantry
1st Lieut.	Ignacio, Frank W.	Company I, 299th Infantry
1st Lieut.	Scruton, Gordon H.	Company K, 299th Infantry

**ENLISTED PERSONNEL HOLDING COMMISSION IN THE NATIONAL GUARD OF THE U. S. ASSIGNED TO WAR STRENGTH VACANCIES**

Rank	Name	Assignment
Private	Greig, Robert G.	Company K, 299th Infantry
Sergeant	Kealoha, Joseph G.	Company F, 298th Infantry
1st Sergeant	Mendoca, Aldolph	Service Co., 298th Infantry
Sergeant	Sakai, Hiroi P.	Company G, 298th Infantry
1st Sergeant	Silva, David P.	Company L, 299th Infantry
Private	Smythe, Henry K.	Company K, 299th Infantry

**TERRITORIAL COMMISSIONED OFFICERS**

Rank	Name	Assignment
Lieut. Col.	Dunham, Walter R.	Aide-de-Camp
Major	Searle, John W.	Infantry
Captain	Medeiros, Louis R.	Infantry
Captain	Billsborough, Charles L. (O.R.C. 1st Lt. Air-Res.)	Corps of Engineers

**TERRITORIAL NAVAL MILITIA**

Commander	Rothwell, Guy N.	Aide-de-Camp
-----------	------------------	--------------

**RETIRED LIST**

Brigadier General	Soper, John H.
Colonel	Jones, John W.
Lieut. Colonel	Baron, Pierre
Major	Coster, Charles M.

**REGULAR ARMY PERSONNEL ON DUTY WITH THE HAWAII NATIONAL GUARD**

Name	Assignment	Address
Overholser, F. E. Mrs. Overholser	Lt. Col. Dept. N.G. Officer and Senior Instr.	National Guard Armory (2306-#3), (78844)
Molony, George H. Mrs. Molony	Capt. Inf., Ass't Instr.	National Guard Armory (4748), Edgewater Apts., (91100)
Adams, John A.	1st Lieut. Inf., Instr. 1st Bn., 299th Inf.	Wailuku, Maui, T.H. (2W365)
Pulsifer, Ralph	1st Lieut., 27th Inf., Ass't to Dept. N.G. Officer	N.G. Armory, (2306-#3) Peninsula, Pearl City (4W36)
McDole, Oscar Mrs. McDole	Staff Sgt. (D.E.M.L.) 298th Inf.	N.G. Armory, (4748) 1559 Louis Drive, Honolulu, T.H.
Knoll, Peter A. Mrs. Knoll	Staff Sgt. (D.E.M.L.) 299th Inf.	N.G. Armory, (4748) Alewa Heights