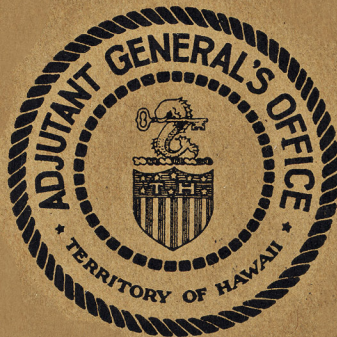
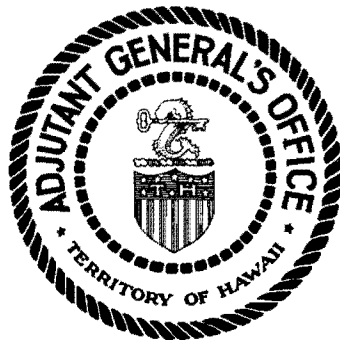


**BIENNIAL REPORT**  
**OF THE**  
**ADJUTANT GENERAL**  
**OF THE**  
**Territory of Hawaii**  
**1925-1926**



**BIENNIAL REPORT**  
**OF THE**  
**ADJUTANT GENERAL**  
**OF THE**  
**Territory of Hawaii**  
**1925-1926**





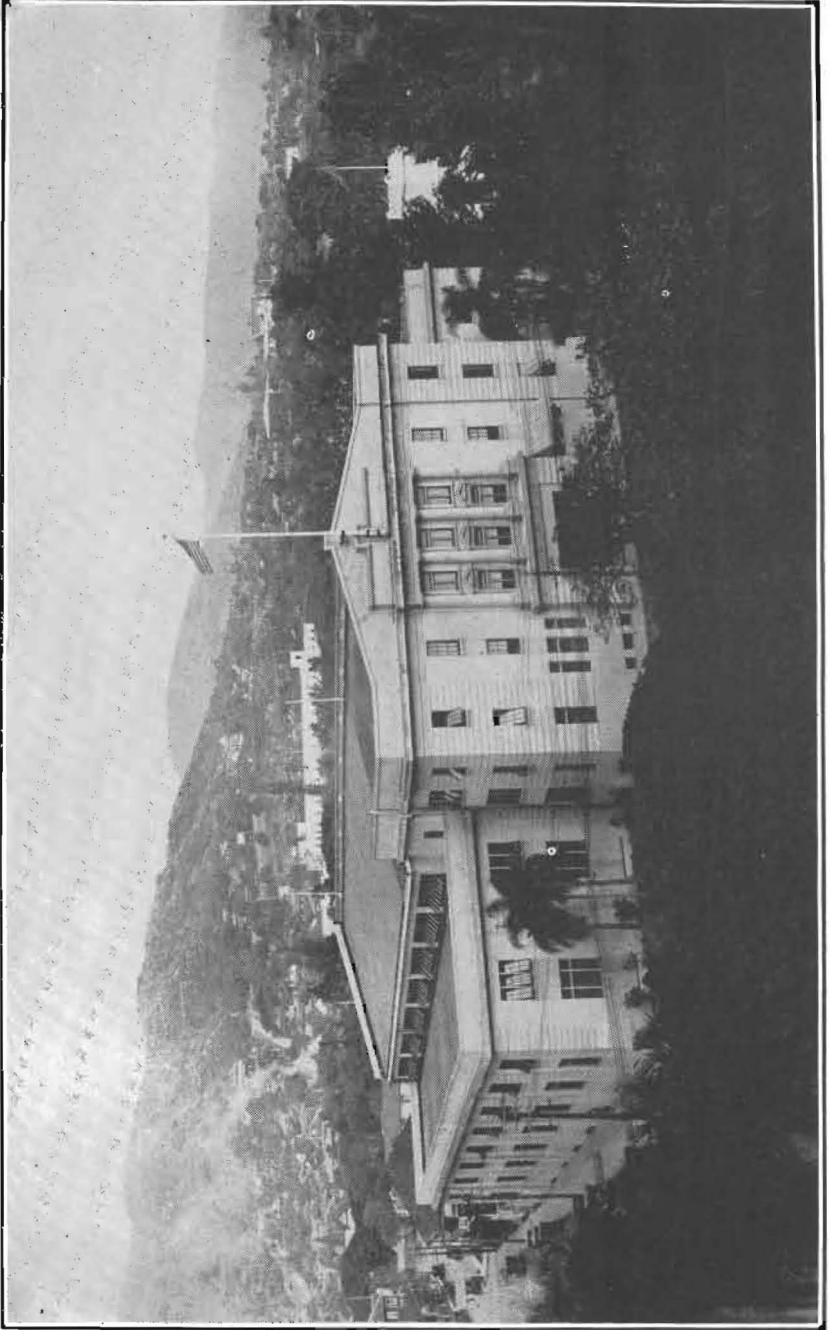


GOVERNOR WALLACE R. FARRINGTON  
The Governor of Hawaii  
and  
Commander-in-Chief of the Hawaii National Guard

**LIST OF ADJUTANTS GENERAL OF THE TERRITORY  
OF HAWAII**

Name	Rank	From	To
Jchn H. Soper	Lieut. Colonel	Appointed July 6, '94	Aug. 6, '03
	Colonel	Aug. 7., '03	April 1, '07
John W. Jones	Colonel	Appointed Apr. 2, '07	Aug. 15, '15
Samue I. Johnson	Br'g. General	Appointed Aug. 16, '15	Feb. 19, '18
Wil Wayne	Major	Acting Mar. 1, '18	
	Colonel	Appointed June 8, '18	Sept. 21, '18
Harry S. Hayward	Colonel	Appointed Sept. 23, '18	Feb. 8, '21
William D. Petter	Colonel	Appointed Feb. 9, '21	July 31, '23
Jchn W. Short	Major	Acting Aug. 1, '23	Aug. 24, '23
Perry M. Smoot	Colonel	Appointed Aug. 25, '23	Incumbent

Note: Periods of "Acting The Adjutant General" shown only in cases where there was no actual The Adjutant General.



THE HONOLULU ARMORY  
Headquarters Hawaii National Guard, Honolulu, T. H.

## INDEX

---

	Page
Adjutant General, office of The.....	9, 11
Adjutants General .....	iii.
Aid to Civil Authorities .....	19, 20, 25
Aide to Governor.....	11
Annual Field Training.....	14-19
Appendix "A" .....	36, 37
Appendix "B" .....	38
Appendix "C" .....	39, 40
Appropriations.....	27, 28, 29, 30
Armories .....	iv., 20, 21, 22, 23, 24
Authorized Enrollment .....	2
Budget.....	39, 40
Buildings.....	20, 24, 39, 40
Camps of Instruction.....	13, 14, 15, 16
Chain of Command .....	i.
Chart of Organization .....	i.
Coat of Arms.....	Facing 5
Community Value.....	32, 33
Conclusion.....	34, 35
Cooperation, Civic.....	31, 32
Crest of the Hawaii National Guard.....	Facing 5
Designation of Units.....	4
Directory of Officers.....	41, 42, 43, 44
Disbanded Units.....	3
Drills and Instruction.....	13
Dole, ex-President.....	20, 27, 35
Duty, Active.....	19, 20
Employees, Headquarters.....	9, 11, 29, 30, 33, 34
Equipment.....	33, 34
Expansion .....	24
Expenditures, Federal Funds.....	29
Expenditures, Territorial Funds.....	38
Expenses, Estimated 1927-29.....	39, 40
Federal Aid, Financial.....	29
Finances.....	27, 28, 29, 30
Flag, Governor.....	Facing 12
Future Plans .....	30, 31
Funds Federal .....	29
General Remarks .....	2
Governor, Picture of .....	ii.
Graph of Hawaii National Guard .....	i.
Infantry School .....	13
Instructors .....	33, 34

	Page
Legislation .....	30, 31
Letter of Transmittal.....	1
List of Officers.....	41, 42, 43, 44
Location of Units.....	3, 4, 5, 31
Military Academy .....	33
Military Records.....	9, 11
Military Schools.....	13, 14
Morale .....	2
National Rifle Matches.....	19
Nativity .....	7
Newspapers .....	32
New Legislation.....	30, 31
New Units.....	3, 29
Office of The Adjutant General.....	9, 11
Officers' Register.....	41, 42, 43, 44
Organization of Hawaii Guard.....	2, 4, 5
Personnel Clerk.....	11, 34
Press .....	32
Property.....	20, 38, 40
Racial Composition.....	7, 9
Records, Military.....	9, 11
Recruiting .....	2
Register of Officers.....	41, 42, 43, 44
Regular Army Instructors.....	33, 34
Remarks, General.....	2
Repairs to Buildings.....	24, 38, 39
Reserve, National Guard.....	6, 7
Rifle Matches .....	19
Salaries .....	11, 38, 39
Schools, Army.....	13, 14
Service, Schools .....	14
Sites, Camp .....	24, 25
Strength of Hawaii National Guard.....	2, 4, 36
Strength of United States National Guard.....	2, 36, 37
Supplies .....	38, 39
Target Ranges.....	24, 25, 26
Training .....	13
Units, Disbanded .....	3
Units, Location of.....	3, 4
Units, Organized .....	3
West Point Military Academp.....	33



LETTER OF TRANSMITTAL

---

Territory of Hawaii  
The Adjutant General's Office  
Honolulu

January 15th, 1927.

To His Excellency Wallace R. Farrington,  
Governor of the Territory of Hawaii,  
Honolulu, T. H.

Sir: In accordance with the requirements of Section 213, Revised Laws of Hawaii, 1925, I have the honor to submit the Biennial Report of the Military Department of the Territory of Hawaii for the period January 1, 1925, to December 31, 1926.

Respectfully submitted,

P. M. SMOOT,  
Colonel, A. G. D., H. N. G.,  
The Adjutant General.

# REPORT

## GENERAL REMARKS

It is a great pleasure to report the Hawaii National Guard in an excellent state of efficiency, ample personnel and splendid morale. Ever since the reorganization of the National Guard after the World War our organization has developed a steady growth and progress; each year having shown an increased strength in our ranks over the preceding one. A perusal of the Annual Report of the Chief, Militia Bureau, for the fiscal year ending June 30, 1926, shows the Hawaii National Guard to have been the only Guard organization of the several States and Territories with a gain in personnel each year since the reorganization in 1919.

To properly classify this past biennial period I would designate the years 1925 and 1926 as the Reconstruction Era of our National Guard. During this period we dropped from our rolls more than eight hundred non-citizens of the United States and added to our ranks some twelve hundred American-born citizens.

The total commissioned and enlisted strength of the Federally recognized personnel, as of December 31, 1926, is 1668, an increase during the biennial period just closed of 455 officers and enlisted men. The enrollment is as follows:

	Authorized Enrollment			Present Enrollment		
	Warrant Officers	Officers	Men	Warrant Officers	Officers	Men
Hdqrs. and Staff Corps	4	0	0	4	0	0
Ordnance Corps .....	1	0	4	1	0	4
Quartermaster Corps .	3	0	20	3	0	19
Medical Detachment ....	1	0	4	1	0	2
298th & 299th Infant's	92	1	1597	81	1	1552
Totals.....	101	1	1625	90	1	1577

From the above it will be seen that the Hawaii National Guard needs but 11 officers and 48 enlisted men to complete the force to the strength as authorized by the War Department. Again referring to the report of the Chief, Militia Bureau, there are fifteen States with a smaller National Guard than Hawaii, thirteen of which States have a larger population than Hawaii. (See Appendix "A").

The following changes in organizations have transpired during this biennium:

- a. New units organized and Federal recognition extended:

Company "E", 299th Infantry, Papaikou, Hawaii, April 8, 1926.

- b. New units organized and Federal recognition not yet received:

Company "B", 299th Infantry, Wailuku, Maui.

- c. Organizations disbanded and Federal recognition withdrawn:

None.

- d. Changes of station or location of units:

Station of Headquarters Company, 3rd Battalion, 298th Infantry, changed from Hilo, Hawaii, to Paaulo, Hawaii, and organization redesignated Headquarters Company, 3rd Battalion, 298th Infantry, October 26, 1925. As redesignated the organization was Federally recognized from October 28, 1925.

Station of Company "L", 299th Infantry, changed from Honokaa, Hawaii, to Hilo, Hawaii, and organization redesignated Company "L", 299th Infantry, October 26, 1925. As redesignated the organization was Federally recognized from October 28, 1925.

- e. Reorganization of units:

Company "L", 298th Infantry (Rifle Company), Aiea, Oahu, converted into Company "D", 298th Infantry, (Machine Gun Company), March 11, 1926. Station remains unchanged.

- f. A net gain for the biennium of 2 new units.

Federal recognition extended Enlisted Detachment, State Staff, Hawaii National Guard, by the Secretary of War on Form No. 4, Militia Bureau, War Department, dated October 21, 1926, to date from June 12, 1917, with station at Honolulu, T. H.

The present designations, locations and strength of units are as follows:

	Officers	Warrant Officer	Men
Adjutant General's Dept. ....	Honolulu 2	0	0
Inspector General's Dept. ....	Honolulu 1	0	0
Judge Advocate General's Dept. ....	Honolulu 1	0	0
Medical Dept. ....	Honolulu 1	0	2
Ordnance Dept. ....	Honolulu 1	0	4
Quartermaster Dept. ....	Honolulu 3	0	19
Regimental Hq., 298th Inf. ....	Honolulu 6	0	0
Headquarters Co., 298th Inf. ....	Honolulu 1	0	73
Howitzer Co., 298th Inf. ....	Honolulu 2	0	58
Service Co., 298th Inf. ....	Honolulu 4	1	75
Medical Detachment, 298th Inf. ....	Honolulu 5	0	29
Hq. & Hq. Co., 1st Bn., 298th Inf., ....	Honolulu 3	0	31
Hq. & Hq. Co., 2nd Bn., 298th Inf., ....	Honolulu 3	0	27
Hq. 3rd Bn., 298th Inf. ....	Honomu, Hawaii 1	0	0
Hq. Co., 3rd Bn., 298th Inf. ....	Paauilo, Hawaii 1	0	20
Company "A", 298th Inf. ....	Honolulu 3	0	65
Company "B", 298th Inf. ....	Honolulu 3	0	69
Company "C", 298th Inf. ....	Honolulu 2	0	68
Company "D", 298th Inf. ....	Aiea, Oahu 3	0	75
Company "E", 298th Inf. ....	Honolulu 3	0	66
Company "F", 298th Inf. ....	Honolulu 3	0	66
Company "G", 298th Inf. ....	Waipahu, Oahu 3	0	65
Company "H", 298th Inf. ....	Honolulu 3	0	69
Company "I", 298th Inf. ....	Honomu, Hawaii 3	0	62
Company "M", 298th Inf. ....	Hilo, Hawaii 3	0	72
Company "A", 299th Inf. ....	Lahaina, Maui 3	0	67
Company "B", 299th Inf. ....	Wailuku, Maui 1	0	50
Company "C", 299th Inf. ....	Paia, Maui 2	0	68
Company "D", 299th Inf. ....	Wailuku, Maui 3	0	72
Company "E", 299th Inf. ....	Papaikou, Hawaii 3	0	70
Company "F", 299th Inf. ....	Hilo, Hawaii 3	0	61
Company "G", 299th Inf. ....	Olaa, Hawaii 3	0	67
Hq. Co., 3rd Bn., 299th Inf. ....	Hakalau, Hawaii 2	0	21
Company "L", 299th Inf. ....	Hilo, Hawaii 3	0	61
Medical Detachment, 299th Inf. ....	Hilo, Hawaii 3	0	25
Total .....	90	1	1577

In addition to the above listed Federally recognized Guardsmen, there is the following personnel in the Hawaii National Guard:



CREST PREPARED IN THE OFFICE OF THE QUARTERMASTER-GENERAL,  
U. S. ARMY, FOR ALL COLOR BEARING ORGANIZATIONS OF THE  
HAWAII NATIONAL GUARD, AND APPROVED BY THE  
WAR DEPARTMENT



OFFICIAL SHOULDER PATCH FOR WEAR BY ALL MEMBERS OF THE  
HAWAII NATIONAL GUARD

	Officers	Warrant Officer	Men
State .....	5	0	0
Unassigned .....	5	0	0
Reserve .....	9	0	25
Total State, Unassigned; Reserve.....	19	0	25
Total Federally recognized .....	90	1	1577
Grand total officers and men .....	109	1	1602

### CREST FOR HAWAII NATIONAL GUARD

The color bearing regiments of the Hawaii National Guard, now the 298th and 299th Infantry, are very desirous of securing their coat of arms that these may be placed upon their regimental colors. With this in mind these Headquarters have been working on the coat of arms for the 298th Infantry for the past two years and have about completed the necessary data, having received some cooperation from a board of officers from the 298th Infantry. The War Department will supply to all National Guard regiments a set of regimental colors at no expense to the State or Territory, provided such National Guard will furnish a coat of arms with crest, suitably designed, to represent the traditions of such military organization. It was proposed by the War Department that the National Guard regiments for the Territory of Hawaii adopt as their crest to be placed with the coat of arms the following described insignia:

On a wreath or and gules a dolphin embowed argent, in his mouth a key. The dolphin is the heraldic king of fishes and the Hawaiian Islands are the key of the Pacific. The twists of the wreath are gold and red the colors of the old royal Hawaiian house. The dolphin is silver or white and the key is gold.

This insignia will be adopted by the Hawaii National Guard as the crest for all its organizations.

### SHOULDER PATCH

There was also approved by Your Excellency and

adopted by the Hawaii National Guard a Shoulder Patch Design which is described in the following General Order:

General Orders No. 18.

Headquarters Hawaii National Guard

Honolulu, T.H., April 15, 1925.

1. A Shoulder Patch design has been approved this date by our Commander-in-Chief, His Excellency, Wallace R. Farrington, for use by members of the Hawaii National Guard. All officers, warrant officers and enlisted men of the Hawaii National Guard will hereafter wear on the left shoulder, about one inch below the shoulder seam of all uniform coats, other than white, the following prescribed shoulder patch:

"A golden yellow circle  $2 \frac{5}{8}$  inches diameter uniformly superimposed upon a medium green circle  $2 \frac{7}{8}$  inches diameter; evenly placed in the yellow circle the silhouette of a Hawaiian warrior of medium brown color, wearing a medium red (feathered) helmet. The entire figure, with helmet, being two inches in height. The Hawaiian warrior figure will be facing toward the front as worn on the left sleeve. The historical significance of the Hawaiian warrior is that the present Hawaii National Guardsmen are direct descendants of the Hawaiian warriors of the monarchy. The colors represent the red and gold royal colors of Hawaii and the ever present verdure green of a Hawaiian landscape."

2. Sergeant John K. S. Char, Company "C," 298th Infantry, was the designer of the above authorized shoulder patch.

By order of the Governor:

P. M. SMOOT,  
Colonel, A. G. D., H. N. G.,  
The Adjutant General.

NATIONAL GUARD RESERVE

A new, and I think constructive, policy was adopted by

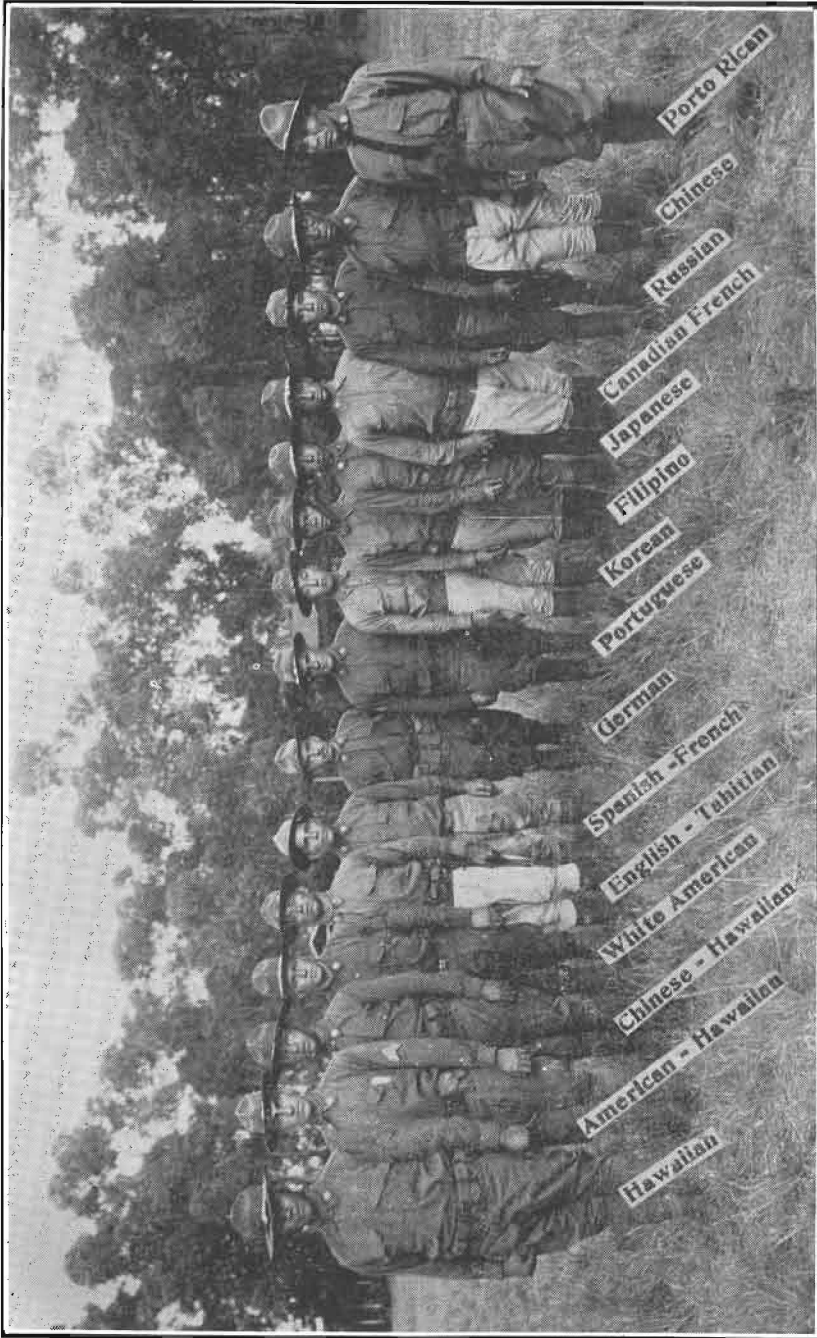
the War Department for handling the transfer and discharge of enlisted men thru the publication of National Guard Regulations No. 25, Militia Bureau, dated July 1, 1926. In the past the turnover in enlisted personnel in the Guard of all the States and Territories has been excessive and the cause of much study by those most concerned for a method of solving the problem. The new National Guard Regulation quoted above creates and prescribes for a National Guard Enlisted Reserve within each State and Territory and into such Reserve a large number of troops requesting transfer or discharge will be placed. Such a Reserve was created for the Hawaii National Guard by General Orders No. 49, Headquarters Hawaii National Guard, November 1, 1926. A suitable bill should be presented to the Territorial Legislature changing our present local Militia laws to conform to this Federal Regulation.

#### NATIVITY OF PERSONNEL

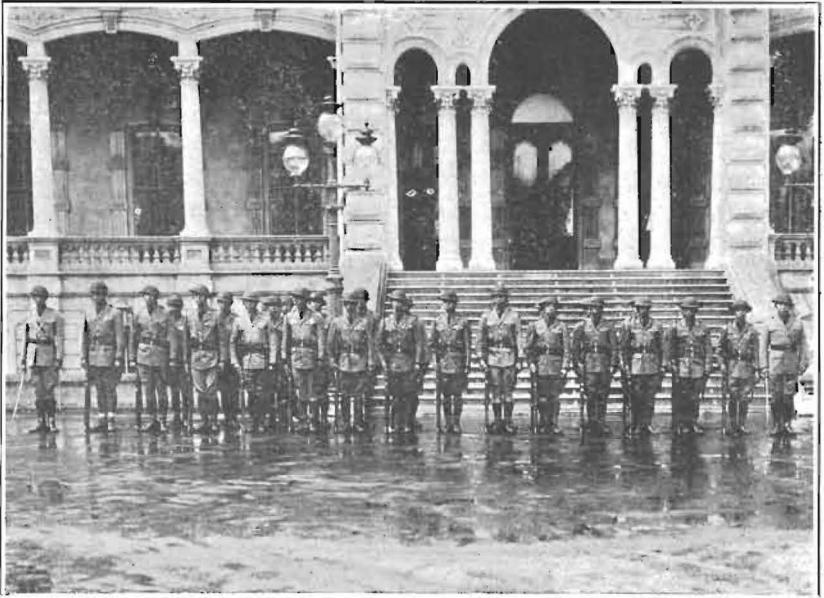
Of particular interest to those of us whose inclinations or duties require a constant contact with the vital problem of maintaining a real American-thinking population within our Territory is the varied nativity (commonly called Racial Composition) of our Island troops. The nativity of the Hawaii National Guard is as follows:

Hawaiians .....	468	Russians .....	4
Portuguese .....	199	Negroes .....	3
Part Hawaiians .....	169	French .....	2
Japanese .....	155	Mexicans .....	2
Chinese .....	151	Norwegians .....	2
Filipinos .....	146	Samoans .....	2
Porto Ricans .....	144	Swedes .....	2
Americans .....	110	Swiss .....	2
English .....	30	Alsations .....	1
Koreans .....	29	Belgians .....	1
Irish .....	18	Dutch .....	1
Scotch .....	10	Hungarians .....	1
Germans .....	9	Poles .....	1
Spanish .....	6		
		Total .....	1668

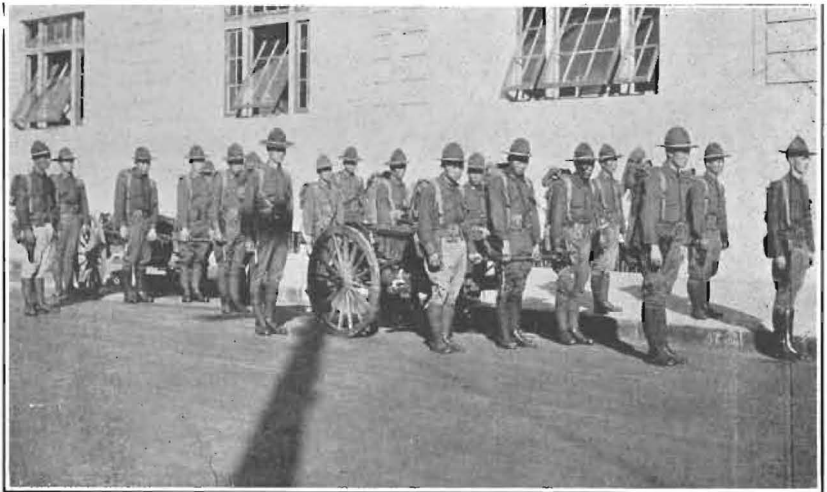




AMERICAN CITIZENS, ALL  
Fifteen Different Nativity Compositions at the 1926 Encampment of the 288th Infantry



AN ALL-HAWAIIAN RIFLE CO.



ALL-KOREAN MACHINE GUN PLATOON

Though composed of at least 27 different nativities and probably 17 inter-nativity mixtures, these 1668 Guardsmen serve together as a unity, their most apparent native traits being those of serious thinking citizen-soldiers of the land of their birth—Hawaii—and intensely loyal to our country. The subject of racial origin does not enter into our ranks and no distinctions are made in recruitment, or promotion. Like our Island population, the Hawaii National Guard represents every fibre of life within our borders.

#### OFFICE OF THE ADJUTANT GENERAL

It is my interpretation the duties of The Adjutant General and the functioning of his office permit of two major classifications:

First: To promote the military defense of the nation, be prepared with a well-trained, organized, disciplined and equipped force to render prompt aid and comfort in any great catastrophe and suppress local disturbances beyond the control of the civil authorities.

Second: To compile and maintain records of all citizens of the Territory who are, or may have, served the state or nation in any of its military services.

To efficiently accomplish these objectives it is necessary to maintain a sufficient staff of trained personnel and furnish them with the proper equipment to perform their necessarily painstaking duties. The duties of the employees of this Department of the Territorial Government require training of a very special nature, a profession not taught in any of our civil schools or employments. It therefore requires years of training gained only in such a headquarters as exists in a large military command. After training such personnel it is necessary that they be continued in office and this can be accomplished only by compensating them properly for their services. At present the employees of this Department are most inadequately paid for their services; the compensation now received averages from about 50 to 75 per cent of that paid to employees in similar positions throughout the Territorial and City and County Gov-

ernments. A readjustment of salaries that will place the employees of this Department on a more equitable basis with their duties and services rendered is earnestly requested. The present staff of Territorial employees in these Headquarters comprises the same, numerically, that was provided upon the reorganization of the after-war Guard in 1919, though the personnel and number of units have multiplied about 600 per cent. The clerical force in these Headquarters for the past biennium has comprised the following:

The Adjutant General  
 The Chief Clerk (Assistant Adjutant General)  
 A Property Clerk  
 A Stenographer and Clerk

With such a small force it is practically impossible to keep our current administration up-to-date and absolutely impossible to compile the important records and data of former Guard personnel that have been neglected in past years—particularly during the period just previous to the World War. It is considered vitally necessary that the following additional personnel be authorized by the Governor and provided by the Legislature for this office:

1 Plans and Training Officer  
 1 Personnel Clerk  
 1 Typist and Clerk  
 1 Messenger

#### AIDE TO GOVERNOR

The 1925 Session of the Territorial Legislature having provided a salary for a Military Aide to the Governor, Major Henry P. Beckley was appointed to this position. Since appointment that officer has been continuously on duty and has been of inestimable value in looking after the official social affairs of the Governor. A detailed report of the activities of the Military Aide is submitted in the fiscal year report of The Adjutant General. It is my belief that the salary for the Governor's Aide and all expenses attached

to his office should be included in the budget submitted for the operation of the Governor's Office and not handled through the Military Department as at present. This Department does not secure any direct benefits from the services of the Governor's Aide other than to relieve certain Guard officers of these duties when they are busy in their civil occupations. The salary and expenses of this Aide tend to increase the budget of the Military Department, thereby reducing our chances of securing the necessary funds for the operation of the Hawaii National Guard.

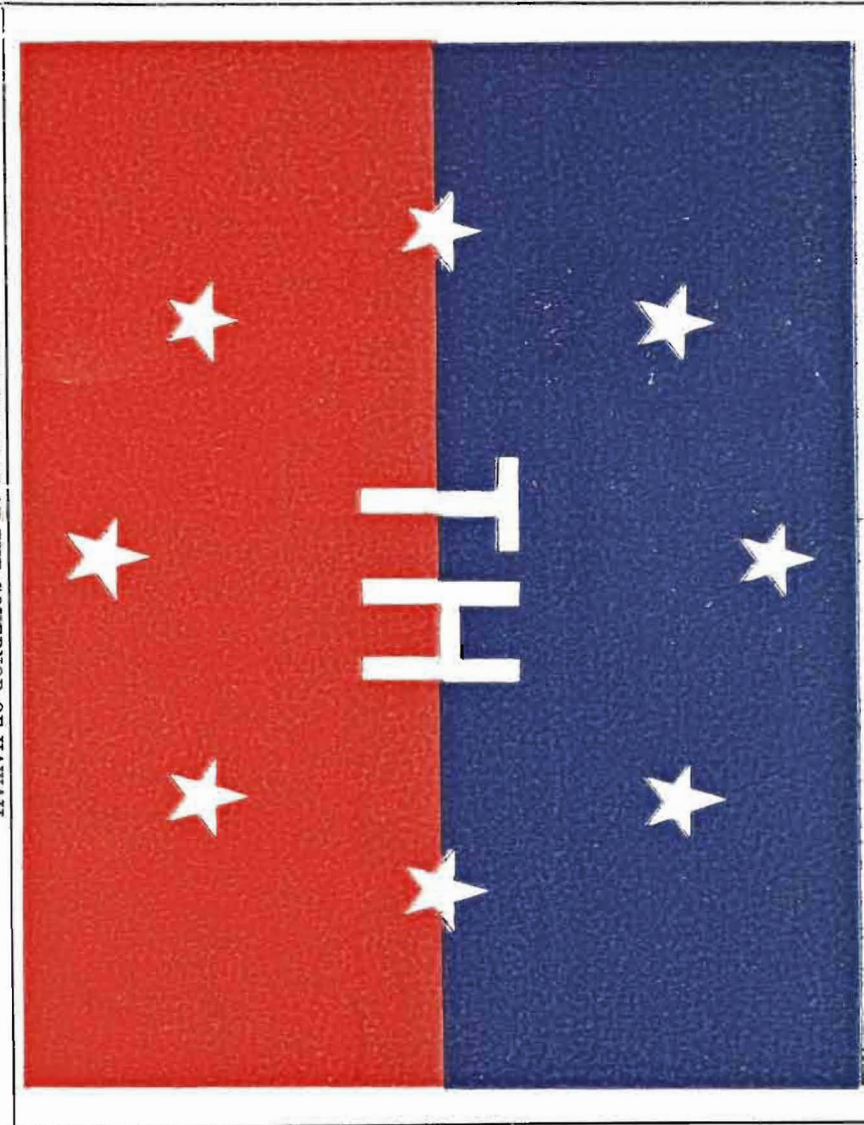
### GOVERNOR'S FLAG

On March 2, 1925, Your Excellency requested The Adjutant General to investigate the origin of the personal flag of the Governor, such flag having been adopted by your predecessor. The investigation did not disclose any information of the authentic origin of the flag so Your Excellency requested a design be submitted for a more suitable flag for the Governor of the Territory. On March 14, 1925, Your Excellency approved and adopted for the personal use of the Governor of Hawaii the following described flag:

To be divided into two equal sections horizontally, the upper half blue and the lower half red. The center to contain in white the capital letters "T H", one half of each letter to rest on the blue field and the other half on the red field. The letters "T. H." to be surrounded by eight white stars placed equi-distantly, representing the following Islands of the Hawaiian Group: Niihau, Kauai, Oahu, Molokai, Maui, Lanai, Kahoolawe, and Hawaii; one of these stars to be directly above the center of the monogram "T H".

Dimensions: The fly to be 1.44 times the hoist. The height of the letters T. H. to be  $\frac{2}{9}$  of the hoist. Each star, measured from opposite tips, to be  $\frac{1}{2}$  the height of the letters T. H.

The original design and descriptive matter of this flag are on file in these Headquarters and a copy of which has been supplied to your office.



OFFICIAL FLAG OF THE GOVERNOR OF HAWAII  
Designed by Colonel P. M. Smoot. Approved and Adopted by  
Governor Wallace R. Farrington, March 14, 1925

## TRAINING

A very large proportion of National Guard military training is obtained through armory drill instruction and full advantage of these opportunities was taken by all our units. In addition to a regular drill period of one and one-half hours' duration per week, all organizations took advantage of every opportunity offered to hold extra drills, participate in local and national holiday celebrations, and week-end overnight encampments. The average per cent attendance at these drills, etc., was very good, clearly demonstrating the interest taken in a citizen soldier's duties by the local Guardsmen.

## MILITARY SCHOOLS

In addition to the regular drills and assemblies as mentioned above, many schools were held where the study of military subjects was paramount. Officers attended schools once a week whenever it was possible, or practicable to hold classes, and where suitable instructors were available. Many volunteer schools have been held during the past two years that have proven of much real value. Such volunteer schools were in special subjects as Machine Gunnery, Supply and Service, and Communications.

A School of Instruction in Infantry Arms was held at Schofield Barracks, Oahu, for the six-day period February 8 to 13, 1926, both dates inclusive. The following personnel attended this course of instruction:

31 Officers

89 Enlisted Men

The subjects covered at this school were excellently presented by the instructor personnel of Regular Army officers and noncommissioned officers supplied by the Commanding General, Schofield Barracks. In my opinion this school was one of the most beneficial types of military instruction ever given the local Guardsmen in so short a period. The expenses of this school, including pay and transportation, were provided from Federal Funds allotted to the Territory by the Militia Bureau, War Department.

## SERVICE SCHOOLS

The benefits derived by the entire organization from Guardsmen graduating from the various Regular Army Service Schools are quite manifest and it is hoped such opportunities for our troops to attend these schools in the future will increase. The following have completed the prescribed courses at the indicated schools during the past six years.

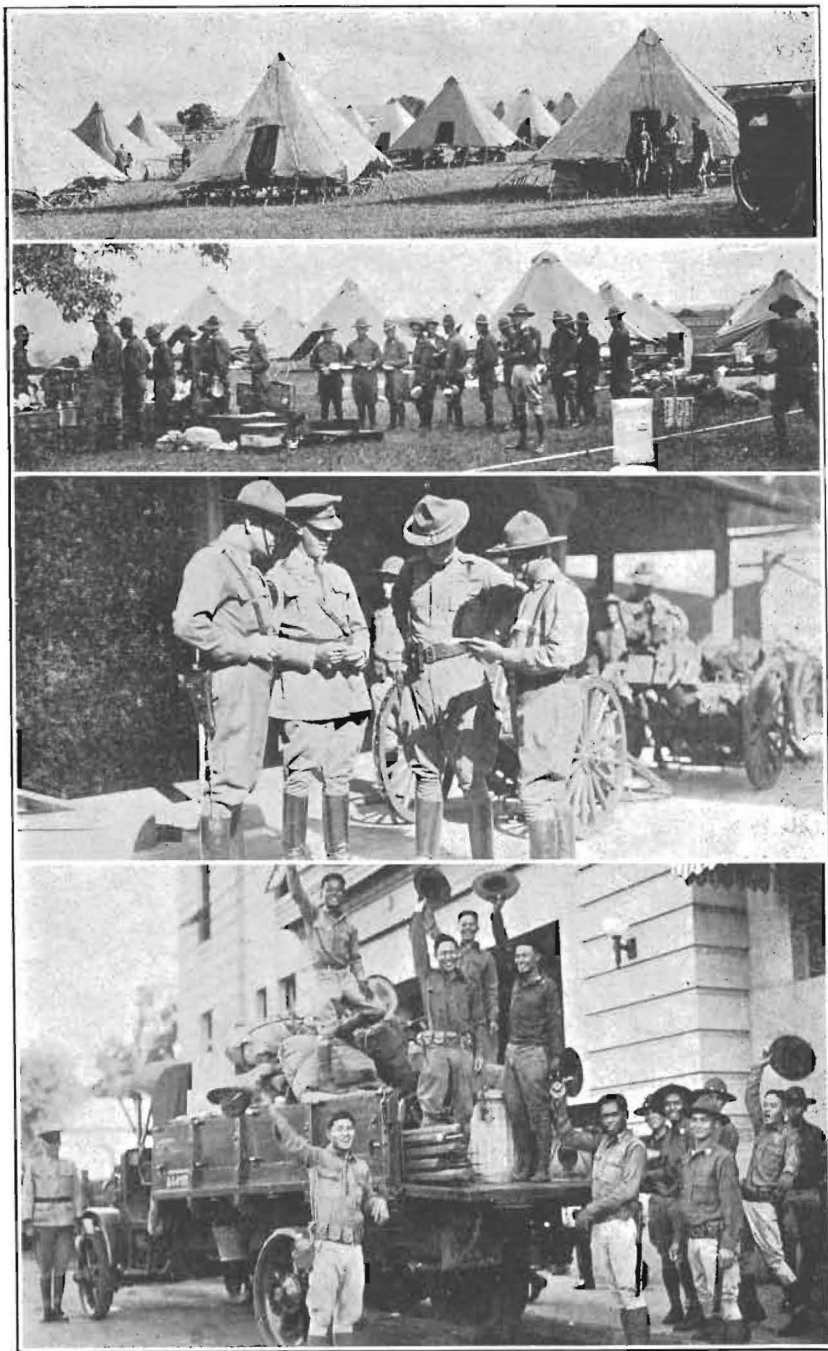
School	1920	1922	1925	1926
Infantry School, Fort Benning, Georgia, Officers' Course .....	1	1	2	2
Infantry School, Fort Benning, Georgia, Noncommissioned Officers' Course.....	.....	.....	.....	1
Command and General Staff School, Fort Leavenworth, Kansas .....	.....	.....	.....	1
Medical School, Carlisle Barracks, Pennsyl- vania, Officers' Course .....	.....	.....	.....	1
Total attendance at all Service Schools.....				<u>9</u>

The entire expenses of pay and transportation for attendance at these schools are paid by the War Department and no part of it is borne by the Territory.

## ANNUAL FIELD TRAINING

The following required Fifteen-Day Annual Field Training Periods were held during this biennial period:





FIELD TRAINING SCENES, 1926  
 Upper Views: Hilo Annual Encampment, 299th Infantry  
 Lower Views: Off for the Oahu Camp, 298th Infantry

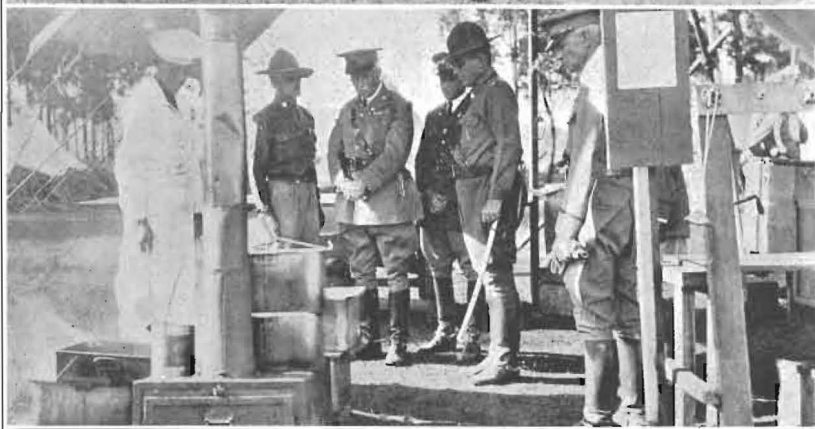
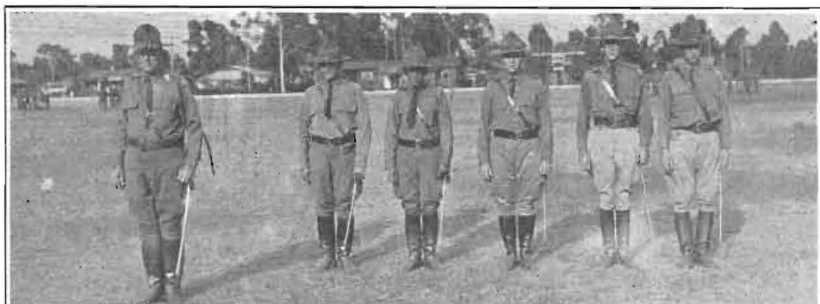
1925

Date	Location	Organization	Warr't		
			Officers	Officer	Men
Apr. 18—	Terr. Fair	Adjutant General's Dept. ....	2	0	0
May 2	Grounds, Honolulu				
"	"	Medical Detach., S.S.C. & D.....	1	0	0
"	"	Q. M. Detach., S.S.C. & D.....	3	0	18
"	"	Ord. Detach., S.S.C. & D.....	1	0	4
"	"	Reg. Hdqrs., 298th Inf.....	6	0	0
"	"	Hdqrs. Co., 298th Inf.....	2	0	63
"	"	Service Co., 298th Inf.....	3	1	56
"	"	Howitzer Co., 298th Inf.....	3	0	44
"	"	Medical Detach., 298th Inf.....	5	0	18
"	"	Hq. & Hq. Co., 1st Bn., 298th Inf.	2	0	24
"	"	Co. "A", 298th Inf.....	3	0	54
"	"	Co. "B", 298th Inf.....	3	0	58
"	"	Co. "C", 298th Inf.....	3	0	51
"	"	Hq. & Hq. Co., 2nd Bn., 298th Inf.	3	0	22
"	"	Co. "E", 298th Inf.....	3	0	40
"	"	Co. "F", 298th Inf.....	3	0	48
"	"	Co. "G", 298th Inf.....	3	0	45
"	"	Co. "H", 298th Inf.....	3	0	50
"	"	Hq. & Hq. Co., 3rd Bn., 298th Inf.	3	0	22
"	"	Co. "L", 298th Inf.....	3	0	58
"	"	Co. "M", 298th Inf.....	1	0	50
"	"	Co. "A", 299th Inf.....	3	0	61
"	"	Co. "F", 299th Inf.....	3	0	54
"	"	Co. "G", 299th Inf.....	3	0	53
			68	1	893
					68
					1

Total present ..... 962

From April 25 to May 2 the above organizations participated in the Joint Army and Navy Exercises.

Date	Location	Organization	Officers	Men
12-'26	Hilo, Hawaii	Co. "I", 298th Inf. ....	2	55
"	"	Hq. & Hq. Co., 3rd Bn., 299th Inf	2	24
"	"	Med. Detach., 299th Inf.....	2	19
"	"	Co. "D", 299th Inf. ....	2	48
"	"	Co. "C", 299th Inf. ....	2	53
			10	199
				10
				209



#### FIELD TRAINING SCENES, 1926

Upper: Col. L. M. Judd, Comdg. 298th Inf., and Staff.  
 No. 2: Gov. Farrington, Delegate Jarrett, Mayor Wilson, and General Smith  
 Review the 298th Infantry  
 No. 3: Major-General E. M. Lewis, Comdg. Hawaiian Dept., Inspects Camp  
 Lower: A Company Kitchen in the Field

1926

Date	Location	Organization	Warr't		
			Officers	Officer	Men
Aug.14-28	Schofield	Bks.,Oahu			
"	"	Hq., 298th Inf. ....	7	0	0
"	"	Hq., 1st Bn., 298th Inf. ....	1	0	0
"	"	Hq., 2nd Bn., 298th Inf. ....	1	0	0
"	"	J. A. G. D., S. S. C. & D. ....	1	0	0
"	"	I. G. D., S. S. C. & D. ....	1	0	0
"	"	A. G. D., S. S. C. & D. ....	2	0	0
"	"	Med. Dept., S. S. C. & D. ....	1	0	2
"	"	Q. M. Dept., S. S. C. & D. ....	3	0	17
"	"	Hq. Co., 1st Bn., 298th Inf. ....	1	0	19
"	"	Hq. Co., 2nd Bn., 298th Inf. ....	2	0	17
"	"	Hq. Co., 298th Inf. ....	2	0	60
"	"	Service Co., 298th Inf. ....	4	1	52
"	"	Howitzer Co., 298th Inf. ....	3	0	43
"	"	Med. Detach., 298th Inf. ....	1	0	18
"	"	Co. "A," 298th Inf. ....	1	0	44
"	"	Co. "B," 298th Inf. ....	3	0	60
"	"	Co. "C," 298th Inf. ....	2	0	39
"	"	Co. "E," 298th Inf. ....	3	0	38
"	"	Co. "F," 298th Inf. ....	3	0	43
"	"	Co. "G," 298th Inf. ....	3	0	52
"	"	Co. "H," 298th Inf. ....	3	0	39
			<u>48</u>	<u>1</u>	<u>543</u>
					48
					1
		Total present .....			592
Sept. 11-25	Punchbowl				
	Honolulu	Co. "D", 298th Inf. ....	3	0	65

Date	Location	Organization	Officers	Men
Sept. 25—				
Oct. 9	Hilo, Hawaii	Hq., 3rd Bn., 298th Inf.....	1	0
"	"	Hq. Co., 3rd Bn., 298th Inf.....	1	11
"	"	Co. "I", 298th Inf. ....	3	48
"	"	Co. "M", 298th Inf. ....	3	49
"	"	Hq. Co., 3rd Bn., 299th Inf.....	1	17
"	"	Co. "E", 299th Inf. ....	3	60
"	"	Co. "F", 299th Inf. ....	2	40
"	"	Co. "G", 299th Inf. ....	2	45
"	"	Co. "L", 299th Inf. ....	3	52
"	"	Med. Detach., 299th Inf.....	2	18
			21	340
				21
		Total present .....		361
Oct. 16-30	Wailuku, Maui	Co. "A", 299th Inf.....	3	40
"	"	Co. "C", 299th Inf. ....	2	42
"	"	Co. "D", 299th Inf. ....	3	41
			8	123
				8
		Total present .....		131

### RIFLE MATCHES

Owing to insufficient appropriations by the National Congress, the Territorial Guard was unable to send a team to the National Rifle and Pistol Matches at Camp Perry, Ohio, during the year 1925. No funds were appropriated by Congress for the usual National Matches during the year 1926 so the customary events at Camp Perry were not held.

Several matches have been fired during this biennium between teams of the National Guard and teams from the R. O. T. C. and a British Cruiser, on Oahu. All these matches were won by Guard teams. On the island of Hawaii several rifle and pistol matches were fired among Guard teams and between the Guard and the Hilo Rifle Club.

### ACTIVE DUTY

During the years 1925-26 we were not called upon for any active duty by the Federal Government or in aid of the

local civil authorities. A saluting battery and escort were called to one day's duty to participate in the funeral of ex-President of the Republic and ex-Governor of the Territory Sanford B. Dole. No funds having been provided by the Territorial Legislature to finance such emergencies, the expenses of this active duty were paid from the salaries appropriated for employees of the Military Department.

### ARMORIES

The following armories are owned by the Territory of Hawaii:

Honolulu, Oahu (one). Main construction, concrete  
 Hilo, Hawaii (one). Main construction, frame  
 Kohala, Hawaii (one). Main construction, frame  
 Honomu, Hawaii (one). Main construction, frame  
 Wailuku, Maui (one). Main construction, frame  
 Lahaina, Maui (one). Main construction, frame

The following armories are leased to the Territory:

Aiea, Oahu (one). Main construction, frame  
 Olaa, Hawaii (one). Main construction, frame  
 Honokaa, Hawaii (one). Main construction, frame (not  
 in use)  
 Hakalau, Hawaii (one). Main construction, frame

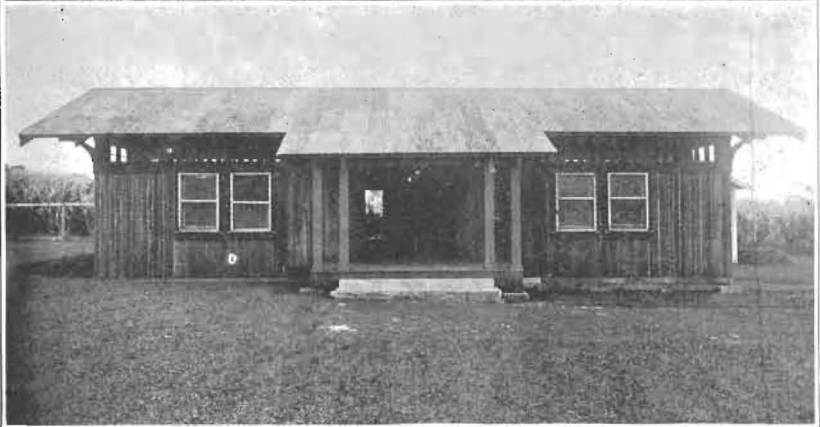
The following armories are loaned to the Territory:

Waipahu, Oahu (one). Main construction, frame  
 Paia, Maui, (one). Main construction, frame  
 Papaikou, Hawaii (one). Main construction, frame

The frame, one-company, armory at Kapaa, Kauai, was donated to the Territorial Board of Health on October 28, 1925.

All of the armories are equipped with concrete or iron strong rooms or vaults, for the safe storage of arms and ammunition.

Though the 1925 session of the Legislature appropriated \$5,500.00 for an armory to be erected at Lihue, Kauai, it has not been advisable to have such building constructed

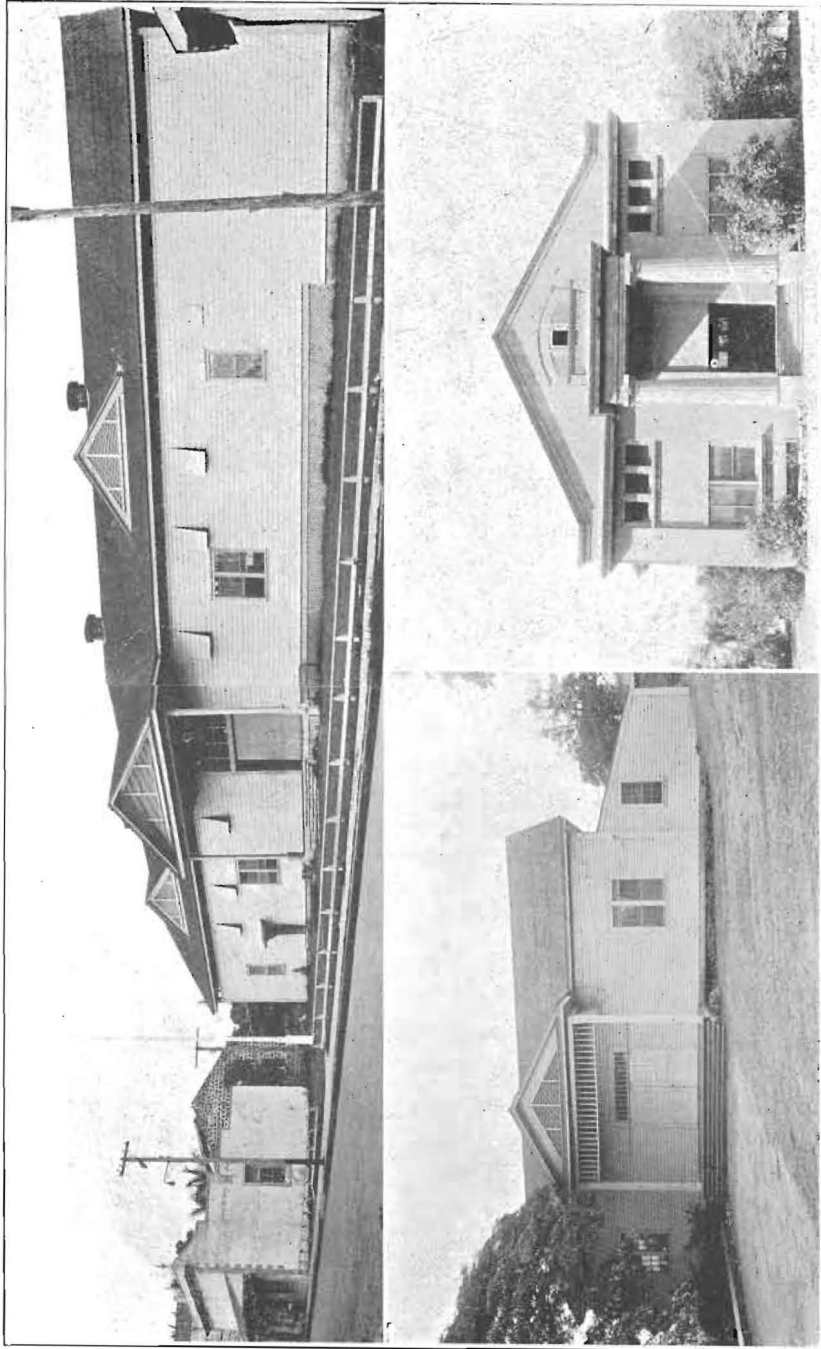


**ARMORIES OWNED BY THE TERRITORY**

Upper: Honolulu, Hdqrs. 298th Infantry

Center: Kohala (Hawaii) Armory

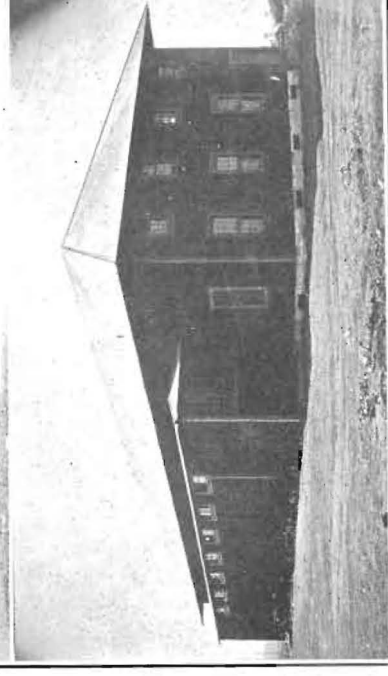
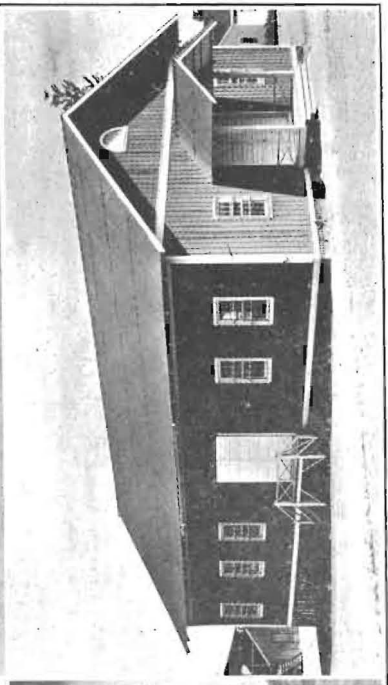
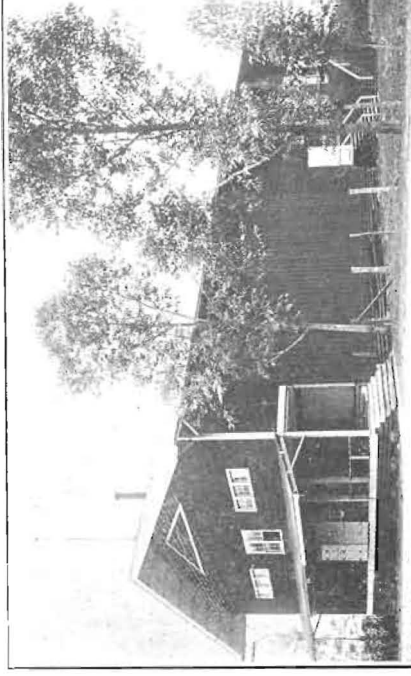
Lower: Honoou Armory



ARMORIES OWNED BY THE TERRITORY  
Above: Hilo Armory, Hdqrs. 299th Infantry. Lower left: Wailuku Armory. Lower right: Lahaina Armory



Above: Hilo Armory., Hdqrs. 299th Infantry. Lower left: Wailuku Armory. Lower right: Lahaina Armory



ARMORIES OWNED BY THE TERRITORY  
Upper right: Waihana, Oahu  
Lower right: Papaikou, Hawaii

ARMORIES LEASED OR LOANED TO THE TERRITORY  
Upper left: Ohaa, Hawaii  
Lower left: Paia, Maui

until we are assured of a Guard organization to occupy it. At present our forces are organized and recruited to the limit as authorized by the War Department so that a military unit could not be allotted to the locality of Lihue should the personnel be available. The \$5,500.00 appropriated will be returned to the Territory as it is not available for any other purpose.

The City of Hilo is in need of a new and larger armory and of an appearance creditable to the City and Territory. Undoubtedly the 1927 Legislature will be requested to appropriate a sum sufficient to erect the required building. It is estimated that the size and type building desired will cost approximately \$100,000.00. If funds for such a building are provided, it is my recommendation that it be erected on the site of the present Hilo Armory.

A small (one company) armory is needed for housing a new unit on rural Oahu and a similar building for an infantry company to be organized at Waiakea Homesteads (Hilo), Hawaii.

The Lahaina and Wailuku armories are in a deplorable state of repair and need extensive overhauling, preferably rebuilding.

The general use and rental of all Territorially owned armories, as well as the collection and expenditure of the Armory Fund, is governed by The Armory Board, as required by Section 220, Revised Laws of Hawaii 1925. The annual financial statement of this Board is submitted to Your Excellency during the month of January of each year.

## CAMP SITES AND TARGET RANGES

### Camp Sites

The Territory owns but two camp sites, neither being of much value as such at present. These sites are The Punchbowl Reservation, Honolulu, and part of Paukukalo located about a mile north of Wa'luku, Maui. Punchbowl is too small and lacks sufficient water service to be ever considered as a camp site for an organization larger than a battalion. The Maui camp site has just been acquired by this

Department and needs much improving and construction, including a water system and roadways. It is evident that to develop the Maui camp site for immediate use we can expect little assistance from Federal Funds, through the Militia Bureau, so I recommend an appropriation from the Territorial Legislature for the purpose.

A proposal from the Regular Army, through Headquarters Hawaiian Department, that the Hawaii National Guard combine with the O. R. C., R. O. T. C. and C. M. T. C. towards a concurrent camp site at Schofield Barracks, constructed and improved to accommodate a brigade of infantry was proposed to these Headquarters in November, 1926. I consider this scheme advisable only under the proviso, or agreement, the Hawaii National Guard will always have priority in its occupation, or use. I consider this stipulation of priority fair and just for several reasons, the first two of which are sufficient unto themselves:

(a) The National Guard is the first arm of National Defense that will be called upon to assist the Regular Army in any emergency and its training should be paramount to the others.

(b) The Hawaii National Guard through the Militia Bureau will supply a large proportion (probably 75%) of the funds for the construction and maintenance of such a camp site.

The reservation that has always been used as our camping grounds on the Island of Hawaii is Hoolulu Park (Hilo). Our organization on that Island has now outgrown the present improved area of this Park and as there is no other suitable location near Hilo large enough to accommodate a regiment of Infantry, I recommend the Territory of Hawaii appropriate sufficient funds to finish the proper filling of Hoolulu Park. It is estimated that \$7,000.00 will finance the project, half of which amount would be borne by the County of Hawaii.

#### Target Ranges

All infantrymen should be able to shoot, and shoot efficiently, whether the weapon is rifle, pistol, machine gun

or 37 mm howitzer. It is only by constant instruction, training and practice that this desired result can be attained. A good shot can only be efficiently developed by constant shooting on the target range. At present there is but one suitable target range available for the entire organization and that range is on the outskirts of Hilo (Waiakea District). The troops on Oahu and Maui do not have an opportunity for efficient target practice.

The old target range in Punchbowl Crater, Honolulu, is in great need of repairs and installations before it is available for use by the nine hundred infantrymen on Oahu. It is a function of the Federal Government, through the Militia Bureau, War Department, to keep our target ranges in operating condition and the present unserviceable shape of the Punchbowl Range is due in my opinion, to over zealousness on the part of various officers of the Army charged with assisting the development of the local Guard, as well as lack of understanding by the Section concerned in the Militia Bureau. On Maui the Military Department has recently acquired the best available central location for a combined target range and camp site and it is earnestly hoped the necessary Federal Funds for its improvement and upkeep will not be denied the Territory through causes over which we have no control. In order that our infantry may have some target practice for the calendar year 1927, I am asking the approval by Your Excellency of the items in the budget of the Military Department to the Territorial Legislature of \$3500.00 for installations, alterations and repairs, Punchbowl Reservation, and \$500.00 for repairs to target ranges (emergency). The Territory should also provide sufficient funds for the employment of caretakers for all target ranges and armories and pay for markers, scorers, and telephone operators during target practice.

As the City of Honolulu expands and more homes are constructed in the vicinity of our Punchbowl Reservation, it will then become necessary that we cease rifle target practice in that locality. Bearing this in mind, the Military Department has made application for the valley known as Kuliouou, Oahu, about ten miles' distance from the Honolulu

Armory and in the vicinity of Koko Head. This valley is owned by the Territory and as its transfer to this Department has been approved by Your Excellency, it is proposed that we gradually develop it into a suitable target range.

The Olaa Sugar Company, Limited, at Olaa, Hawaii, has provided an excellent target range for the infantry rifle company located at that place. Such cooperation as has been supplied by this plantation in both the matters of a rifle range and a suitable armory is greatly appreciated and undoubtedly has a great bearing on the excellent morale of the Guardsmen located in that vicinity.

### FINANCES

Attached hereto, marked Appendix "B", is the complete financial statement of territorial funds available and expended during this biennial period. The appropriation of \$59,300.00 by the 1925 Legislature was decidedly insufficient for the support and normal growth of the Territorial military forces. During this biennial period it has caused constant study and considerable anxiety for these Headquarters to keep the Guard operating on the meager funds available and any progress the organization may have achieved during that time is due almost entirely to the remarkable loyalty, persistence and self-sacrifice manifested by its personnel, particularly that esprit-de-corps and team work displayed by the officers.

Sufficient funds should always be available to a military force to meet a short and unexpected emergency. That condition has not been possible for the past several years and was again demonstrated during the month of June, 1926, when, upon the death of the Honorable Sanford B. Dole, ex-President of the Republic of Hawaii, this Department was unexpectedly called upon to furnish troops and a saluting battery on a few hours' notice to participate in the funeral ceremonies. As the result of this and similar calls upon the Territorial appropriations for the general expenses of the Military Department, there are not sufficient funds remaining to our credit to properly meet the expenses

of this Department until June 30, 1927. Requests have been made for financial relief from the Contingent Fund as it was the understanding of these Headquarters that the expenses of any emergency whereby the Hawaii National Guard is called to active duty in the service of the Territory should be from such appropriation. However, through a ruling of the Attorney General, funds from the Governor's Contingent Fund cannot be used for such emergencies of the Military Department. Previous to 1924 it has always been the procedure to meet such emergency expenses from this fund. I estimate an additional \$2,000.00 will be necessary to efficiently continue the operation of the Military Department for the six months' period January 1 to June 30, 1927.

A well-trained National Guard, adequate to afford sufficient police protection to the Territory and to meet any national emergency without requiring the great expense to the public of a large standing army, can be accomplished only by whole-hearted, constructive support to our National Guard by the average citizen and the various Legislative Bodies.

For the proper and orderly operation and expansion of the Guard as well as the immediate repair and upkeep of armories and equipment for the biennial period July 1, 1927 to June 30, 1929, the estimated expenses are \$121,800.00. For detailed data on this budget see Appendix "C" attached hereto. Especial attention should be given to the items of increased clerical personnel for these Headquarters and salary advancement of present employees. In addition to the normal operating expenses of the Guard, funds for the following purposes should be provided:

- (a) Uniform allowances for newly appointed officers
- (b) Traveling expenses for the Territorial Inspector General.
- (c) An emergency fund available for such purposes as active duty in connection with assisting the civil authorities in maintaining order and relief, parades, ceremonies, etc.

In contrast to the meager financing of this Department by the Territory is the manner in which the Federal Gov-

ernment, through the War Department, is assisting us by monetary allowances for pay for troops, equipment, target ranges, encampments, schools, and instructors. The War Department has disbursed within the Territory in the interest of the local militia during this biennial period the following:

By the United States Property and Disbursing Officer, Hawaii National Guard, for the purchase of supplies, pay of target range keepers and repairs, alterations of outdoor target ranges:	
Jan. 1 to Dec. 31, 1925.....	\$ 73,417.27
Jan. 1 to Dec. 31, 1926.....	75,644.10
	<hr/>
Total.....	\$149,061.37
By the Finance Officer, Headquarters Hawaiian Department; for pay of National Guard Troops, pay of instructors, transportation throughout the Territory:.....	
	138,032.56
	<hr/>
GRAND TOTAL.....	\$287,093.93

From a perusal of the above figures, it can be readily seen that the Military Department is a decided financial asset to this community. The Federal Government has spent five dollars to every one provided by the Territorial Legislature.

There are now 37 units (companies and detachments) in the Hawaii National Guard, an increase of 2 since January 1, 1925. The number of these units will continue to increase only so rapidly as Territorial Funds are provided for their proper administration, and with the consent of the Militia Bureau, War Department. With the present clerical personnel allowed by past Territorial appropriations, it is about impossible for these Headquarters to properly control any greater increase in military units. In fact, the saturation point of administration by our present staff was reached when there were 24 units under our command. There are two kinds of administrative assistants needed by these

Headquarters. At least one additional clerk (of military knowledge) is needed to act as the Plans and Training Supervisor, while one clerk and one typist are necessary to assist in routine administration.

## LEGISLATION

### Passed by the 1925 Session

The Thirteenth (1925) Session of the Territorial Legislature incorporated into law several necessary provisions relating to the government of the Hawaii National Guard. Generally, these acts as passed, are as follows:

- Act 52 Amending Sec. 200, Revised Laws of Hawaii, 1925, Changing name from National Guard of Hawaii to Hawaii National Guard.
- Act 53 Amending Sec. 216, R. L., 1925 Changing name from National Guard of Hawaii to Hawaii National Guard.
- Act 69 Amending Sec. 214, R. L., 1925, Changing tenure of Officers' Appointments.
- Act 215 Amending Sec. 243, R. L., 1925, Changing rates of pay for enlisted men and warrant officers on active duty.
- Act 110 Amending Sec. 280, R. L., 1925, Relating to Territorial Employees, members of the Hawaii National Guard.
- Act 52 Amending Sec. 281, R. L., 1925, Relating to Territorial Employees, members of the Hawaii National Guard.

### New Legislation

From the viewpoint of this office it would seem desirable to have certain new laws passed and old ones amended to bring our military laws to meet the steady progress of our organization, or to more nearly conform to those of States known to have most successful National Guard, or to conform to Federal law and regulations.

New bills to be presented, with the sanction of Your Excellency, are:

Amending Sections 207, 210, 213, Revised Laws of Ha-



wai, 1925, and Act 69, Session Laws of 1925, to incorporate the rank of Warrant Officer.

Amending Section 231, Revised Laws of 1925, Relating to Encampments, etc.

A new law providing a uniform allowance for all officers appointed in the Hawaii National Guard.

#### OBJECTIVE FOR THE BIENNIUM 1927-28

Keeping ever before us that a gradual and steady growth of expansion and improvement is more permanent and desirable than short and spasmodic spurts, we approach the new biennial years of 1927-28 with modest plans of growth and development that, I think, are the most desirable. Aside from the never ceasing desire to ultimately train our troops for success in combat, the following objectives are our goal for the approaching biennium:

- (a) Reduce the turnover of personnel to the minimum.
- (b) Advance the military education of our officers.
- (c) Construct and improve rifle ranges and camp sites.
- (d) Secure authority from the War Department to complete the organization of our two Infantry Regiments. At the present moment there are offers, or opportunities, to organize new Infantry companies at the following locations:

Ewa Plantation, Oahu  
 Honolulu, Oahu  
 Laie, Oahu  
 Waialua, Oahu  
 Lihue, Kauai  
 Hawaiian Homesteads, Molokai  
 Kahului, Maui  
 Kohala, Hawaii

#### CIVIC COOPERATION

Compared to most mainland communities, Hawaii ranks near the top of the list of those whose general populace lend constructive moral support to their volunteer citizen

soldiery. Particularly is this true of the willing cooperation of the newspaper fraternity throughout these Islands. The Honolulu Chamber of Commerce has certainly stood behind its Resolution of 1924 wherein they pledged themselves to faithfully support our organization. It is also the only commercial body of the Territory to have presented the Guard with cash donations when they were greatly needed during the past four years.

### Community Value

In supporting the National Guard practically all those persons praising its advantages dwell constantly on its many values to those who are its members, but rarely pause to consider its other important missions. The two most valued are its benefits to both the Nation and the State. The pride of ownership is found in every community possessing a National Guard unit and the morale of the public is considerably bettered thereby. The influence for law and order exerted throughout the Territory by the National Guardsmen is omnipresent and numerous are the occasions such influence operates to prevent lawlessness.

Another important mission of the organized and trained militia is its instant readiness to answer appeals to aid the stricken during civil catastrophies resulting from floods, storms, fires, earthquakes and the like. In the annual report of the Chief, Militia Bureau, for the calendar year 1926, the National Guard of eleven States was called upon for such aid twenty-four times during that year. An average of twice a month for the entire year was the Guard used throughout our Union to render valuable assistance.

Each year the National Congress appropriates many millions of dollars for the pay and support of the Federally recognized National Guard and this money is disbursed in the communities where militia units are located. The moneys so appropriated are apportioned to the various States and Territories according to the number of their Guard personnel. As this Federal financial aid is far in excess of that appropriated by this Territory for the Military Department (actually \$5.00 to \$1.00), it is evident that

the larger our local National Guard, the greater will be the financial return to the business concerns of our communities.

### WEST POINT

Each year the Hawaii National Guard is authorized to send one Guardsman to the United States Military Academy, West Point, advantage being taken of this opportunity each year. The candidate representing the Territorial Guard for the year 1925 was Corporal Theodore Barber, Company "H", 298th Infantry, and our representative for the year 1926 was Private Howard B. Benner, Company "E", 298th Infantry. As there are always many applicants for the one vacancy allotted, it is hoped that in the future we will be permitted to send more than one Guardsman per year to the West Point Military Academy.

### REGULAR ARMY COOPERATION

This report would not be complete and authentic were I to omit mention of the splendid sympathetic assistance offered and rendered by the representatives and members of the Regular Army that it has been our good fortune to work and serve with. The Commanding General of the Hawaiian Department has at all times encouraged us to take advantage of the opportunities at his disposal for our professional advantage and has demonstrated his broad and wise vision of the problems, advantages and limitations of the National Guard. The willing assistance rendered these Headquarters at all times by the War Department, through the Militia Bureau, has been of inestimable value and the appreciation of such help by this office is most sincere.

### INSTRUCTORS

The Military Department of the Territory has been most fortunate in securing the detail of exceptionally capable officers and noncommissioned officers of the Regular Army as Federal Instructors for the various organizations of the Hawaii National Guard. During the past six months

the units of the Guard have made marked progress in tactical efficiency. To a large extent this is due to the special qualifications of the officers and noncommissioned officers of the Regular Army who have diligently carried on the training programs. These representatives of the Regular establishment have at all times displayed initiative, energy and a sympathetic judgment in dealing with the problems incident to the training and instruction of our military forces.

For the past two years there has been constantly on duty with us the following number of Regular Army Instructors:

One Lieutenant Colonel (or Major), Infantry, Officer in Charge of National Guard Affairs and Senior Instructor.

One Captain, Infantry, Senior Instructor, Island of Oahu.

One Captain, Infantry, Senior Instructor, Island of Hawaii.

One 1st Lieutenant, Infantry, Senior Instructor, Island of Maui.

Two Staff Sergeants, Infantry, D. E. M. L.

Two Sergeants, Infantry, D. E. M. L.

Total: 4 Commissioned Officers and 4 Sergeants.

The present instructor personnel, although greatly handicapped by the inability of this office to render the necessary financial and clerical assistance in conducting schools, inspections, special training features and similar desirable activities, is accomplishing splendid results in the development of our Territorial National Guard as an effective component of the Army of the United States.

### CONCLUSION

The same cordial assistance has been given the Military Department by all Territorial Officials during the last two years as has been the case at all times in the past.

The Territorial employees in this office are especially entitled to commendation. Owing to the very small number of employees in this Department, an unusual and at times unreasonable burden of work is imposed upon them. This

situation has been cheerfully met in every instance and the employees have worked extra hours in evenings, Sundays and holidays, without increase of compensation, and without complaint.

On June 9, 1926, ex-President of the Republic of Hawaii, ex-Governor of the Territory of Hawaii and the first Commander-in-chief of the Hawaii National Guard, Sanford Ballard Dole, died at his home in the City of Honolulu at the age of 82 years. The loss of this true friend of the peoples of these Islands has been most deeply felt throughout the entire Guard. Sanford Ballard Dole was always keenly interested in the welfare of our organization which owes its successful origin to his support in its behalf during its infancy. Ever loved and respected by our Guardsmen his loss has been more to us than words can express.

In concluding this report it is desired to express the appreciation of The Adjutant General for the kindly assistance and encouragement that has been received at all times from Your Excellency, and for the sustained interest which you have at all times evidenced in the National Guard of this Territory. The policy of perfect freedom from politics throughout the Hawaii Guard has been in effect at all times, and the zeal, energy and enthusiasm which have retained officers and men in the service under adverse conditions have been largely due to the knowledge that military efficiency and loyalty to our country was the sole test by which the personnel of the National Guard would be judged both by the Military Authorities of the Nation and by yourself as our Governor and Commander-in-Chief.

Respectfully,

P. M. SMOOT,  
Colonel, A. G. D.,  
The Adjutant General.

APPENDIX "A"  
 NATIONAL GUARD STRENGTH BY STATE AND ASSIGNMENT,  
 DECEMBER 31, 1926

Corps Area	Army				State Staff	Spec. Allot.	Coast Def.	G.H.Q. Reserve	Total
	Inf. Div.	Cav. Div.	Troops Other	Corps Tps.					
Alabama	2092	636	....	....	8	....	....	....	2736
Arizona	952	....	....	....	19	....	....	....	971
Arkansas	....	....	987	....	32	1227	....	....	2246
California	4118	....	....	....	20	....	1105	....	5243
Colorado	1300	210	26	....	15	....	....	....	1751
Connecticut	2938	....	227	871	28	....	248	....	4312
Delaware	....	....	....	708	15	....	61	....	784
Dist. of Col.	619	....	....	....	8	64	123	....	814
Florida	1792	....	....	74	5	....	132	....	2003
Georgia	2115	234	....	63	4	1259	....	....	3675
Hawaii	....	....	....	....	34	1634	....	....	1668
Idaho	578	451	....	....	9	....	....	....	1038
Indiana	4055	....	....	729	10	....	....	....	4794
Illinois	6976	244	....	819	7	1140	....	....	9186
Iowa	2522	636	....	526	40	....	....	....	3724
Kansas	2671	576	....	....	41	....	....	....	3288
Kentucky	2260	461	....	....	49	....	....	....	2770
Louisiana	1311	672	....	....	17	....	....	....	2000
Maine	1462	....	....	....	11	....	523	....	1996
Maryland	2915	....	....	....	20	83	....	....	3018
Massachusetts	7548	373	271	....	21	277	875	....	9365
Michigan	3645	233	....	531	29	....	....	....	4438
Minnesota	2618	....	....	....	48	2206	....	....	4872
Missouri	3309	....	....	815	14	....	....	640	4778
Mississippi	1572	....	....	148	9	....	....	....	1729
Montana	1041	....	....	....	5	....	....	....	1046
Nevada	....	....	....	....	....	....	....	....	....
New Mexico	364	647	....	....	28	....	....	....	1039
Nebraska	1790	....	....	....	22	....	....	....	1812
North Dakota	1221	....	....	....	28	....	....	....	1249
North Carolina	1876	254	61	817	25	....	550	....	3583
New Hampshire	....	....	....	978	6	....	....	....	984
New Jersey	3953	632	....	....	22	....	....	....	4607
New York	10997	982	954	1556	59	4548	1771	....	20867
Ohio	7218	720	....	....	15	312	....	....	8265
Oklahoma	4524	....	....	753	45	....	....	....	5322
Oregon	2542	....	....	....	25	....	395	120	3082
Pennsylvania	7659	1582	750	1367	52	....	....	....	11410

<u>Corps Area</u>	Army				State Staff	Spec. Allot.	Coast Def.	G.H.Q. Reserve	Total
	Inf. Div.	Cav. Div.	Troops Other	Corps Tps.					
Porto Rico	....	....	....	....	29	1538	....	....	1567
Rhode Island	617	....	243	....	9	....	692	....	1561
South Dakota	541	....	....	....	4	....	....	672	1217
South Carolina	1708	....	....	51	7	....	206	....	1972
Tennessee	1987	336	141	197	35	....	....	....	2696
Texas	7486	968	....	....	72	....	....	....	8526
Utah	694	....	....	....	6	....	....	429	1129
Vermont	1160	....	....	....	8	....	....	....	1168
Virginia	3267	....	....	....	24	....	710	....	4001
Washington	2148	55	....	....	33	....	212	....	2448
West Virginia	1118	....	....	....	7	312	....	....	1437
Wisconsin	3695	668	....	562	13	....	....	....	4938
Wyoming	....	772	....	....	27	....	....	....	799
Totals	126974	12342	3860	11565	1119	14600	7603	1861	179924

## APPENDIX "B"

## ADJUTANT GENERAL'S OFFICE

## EXPENDITURES BIENNIUM 1925-1927

Expenditures Jan. 1, 1925, to June 30, 1925 .....			\$22,188.37
	Appropriation	Expenditures	
	Biennium	July 1, 1925,	
	1925-1927	Dec. 31, 1926	
Salaries:			
Adjutant General .....	\$7,200.00	\$5,400.00	
Other personal services .....	15,500.00	11,568.50	
Aide to Governor .....	6,000.00	4,500.00	
	<hr/>	<hr/>	
Total personal services.....	\$28,700.00	\$21,468.50	21,468.50

## GENERAL EXPENSES MILITARY

Other Current Expenses .....	\$18,600.00		
Supplies .....		3,478.54	
Communication Service .....		1,016.78	
Travel Expenses .....		1,735.51	
Transportation of things....		133.90	
Print'g & Bind'g (serv.) .....		558.95	
Advertising and Publish- ing of Notices .....		2.40	
Heat, Light, Power and Water (service) .....		2,505.60	
Rents, (Rentals) .....		82.00	
Repairs to Machinery and Equipment .....		202.85	
Other Repairs.....		861.97	
Special & Miscellaneous Current Expenses .....		1,971.72	
Motor Vehicle Upkeep....		1,816.31	
Surveys, Lost Gov't Prop....	2,500.00	1,967.76	16,334.29

## ACQUISITION OF PROPERTY

	\$9,500.00		
Office Equipment and Furnishings .....		261.85	
Other Equipment .....		882.88	
Honoum Garage & Approach .....		2,465.24	3,609.97
		<hr/>	<hr/>
Total Expenditure of Funds, 1925-1927.....			\$63,601.13



## APPENDIX "C"

## BUDGET MILITARY DEPARTMENT 1927-1929

## PERSONAL SERVICES

## Salaries and Wages:—

Adjutant General .....	\$12,000.00	
Ass't Adjutant General and Chief Clerk.....	6,600.00	
Military Aide to the Governor .....	6,000.00	
Property Clerk .....	4,200.00	
*Personnel Clerk .....	3,840.00	
Stenographer .....	3,600.00	
*Typist and Clerk .....	2,640.00	
Janitor and Mechanic, Honolulu Armory .....	2,400.00	
*Ass't Janitor, Honolulu Armory .....	1,440.00	
Caretaker, Punchbowl Range .....	1,440.00	
*Janitor, Hilo Armory .....	720.00	
*Janitor, Lahaina Armory .....	240.00	
*Janitor, Wailuku Armory .....	240.00	
*Janitor, Honomu Armory .....	240.00	
*35 Company Clerks (Part time) \$5.00 each .....	4,200.00	
*2 Regimental Personnel Clerks (Part time), \$25.00 each .....	1,200.00	
*Medical and Dental Services (Military employees) .....	1,000.00	
*Target markers and telephone operators.....	200.00	\$52,200.00

## GENERAL EXPENSES MILITARY

Supplies .....	\$8,650.00
Communication Service .....	2,000.00
Traveling Expenses .....	3,000.00
Transportation of things .....	400.00
Printing and Binding .....	1,500.00
Advertising and Publishing of Notices .....	300.00
Heat, Light, Power and Water .....	4,000.00
Rentals .....	400.00
*Expense Account Entertainment (The Adjutant General) .....	200.00
*Company Expenses—20 @ \$10.00 per month; 10 @ \$5.00 per month .....	6,000.00
Special and Miscellaneous .....	4,000.00
Motor Vehicle Supplies .....	4,000.00
*Painting Honomu Armory .....	600.00
*Alterations, Honolulu Armories .....	5,550.00

*Repairs to buildings (emergency) .....	500.00	
*Repairs to target ranges (emergency) .....	500.00	
*Roadway, Maui Camp Site .....	2,500.00	
*Installations, alterations and repairs, Punchbowl		
Reservation .....	3,500.00	
*Installations and alterations, Maui Camp Site....	2,500.00	
Surveys .....	2,000.00	
Repairs:		
Machinery and Equipment .....	1,000.00	
Other .....	800.00	
Acquisition of Property		
Equipment:		
*Educational, scientific and recreational.....	550.00	
*Motor vehicle: 1 New touring car.....	1,650.00	
*Office equipment and furnishings .....	600.00	
*Other .....	1,400.00	
Buildings:		
*One-company armory, Waiakea, Hilo, Hawaii	6,000.00	
*One-company armory, Rural Oahu .....	5,500.00	69,600.00
		<hr/>
		\$121,800.00

\*New

## ROSTER OF OFFICERS, H. N. G. (AS OF DECEMBER 31, 1926)

Name and Residence	Federally		Assignment
	Recognized	Branch	
<b>COLONEL</b>			
Smoot, Perry M., Honolulu, T. H.	10-11-'23	A. G. D.	The Adjutant General, Honolulu, T. H.
<b>LIEUTENANT-COLONEL</b>			
Hoopai, William, Honolulu, T. H.	1-15-'25	Infantry	Comdg. 298th Inf., Honolulu, T. H.
<b>MAJORS</b>			
Andersen, Wilhelm A., Honolulu, T. H.	11-9-'23	Infantry	Comdg. 1st Bn., 298th Inf., Honolulu, T. H.
Baldwin, Grove, Hilo, Hawaii	9-24-'24	Med Corps	Comdg. M. D. Det., 299th Inf., Hilo, Hawaii
Benyas, Nathan M., Honolulu, T. H.	8-22-'22	Med. Corps	Comdg. M. D. Det., 298th Inf., Honolulu, T. H.
Chillingworth, William S., Honolulu, T. H.	7-3-'24	Infantry	Comdg. 2nd Bn., 298th Inf., Honolulu, T. H.
Riess, Frank F., Honolulu, T. H.	5-6-'24	Q.M. Corps	Comdg. Q.M.C., S.S.C.&D., Honolulu, T. H.
Ross, Gordon C., Honolulu, T. H.	4-1-'26	Infantry	M. G & Gas Off, 298th Inf., Honolulu, T. H.
Spalding, Andrew T., Honomu, Hawaii	5-7-'24	Infantry	Comdg. 3rd Bn., 298th Inf., Honomu, Hawaii
<b>CAPTAINS</b>			
Anderson, Alex. A. S. M., Papaikou, Hawaii	4-8-'26	Infantry	Comdg. Co. E., 299th Inf., Papaikou, Hawaii
Austin, Stafford L., Aiea, Oahu	4-20-'22	Infantry	Comdg. Co. D., 298th Inf., Aiea, Oahu
Best, Henry L., Honolulu, T. H.	8-31-'22	Infantry	Inspector General, H.N.G., Honolulu, T. H.
Bolton, Edward M., Honolulu, T. H.	9-13-'21	A. G. G.	Asst. Adjutant General, Honolulu, T. H.

Name and Residence	Federally Recognized	Branch	Assignment
Cooper, Harry F., Honolulu, T. H.	12-21-'25	Infantry	Comdg. Service Co., 298th Inf., Honolulu, T. H.
Ednie, Andrew D., Honomu, Hawaii	8-1-'25	Infantry	Comdg. Co. I, 298th Inf., Honomu, Hawaii
Faus, Robert B., Honolulu, T. H.	9-16-'25	Med. Corps	M.D. Det., 298th Inf., Honolulu, T. H.
Fuller, Samuel M., Honolulu, T. H.	8-7-'26	Infantry	Comdg. Co. H., 298th Inf., Honolulu, T. H.
Gibb, James A., Wailuku, Maui	7-8-'25	Infantry	Comdg. Co. D., 299th Inf., Wailuku, Maui
Henry, David L., Hilo, Hawaii	10-26-'25	Infantry	Comdg. Co. L, 299th Inf., Hilo, Hawaii
Judd, Henry P., Honolulu, T. H.	10-15-'19	Chaplain	298th Infantry, Honolulu, T. H.
Kauhane, Harry, Honolulu, T. H.	1-5-'22	Infantry	R. S. O., 298th Inf., Honolulu, T. H.
Kupau, Oliver H., Honolulu, T. H.	11-1-'26	Infantry	Comdg. Co. A, 298th Inf., Honolulu, T. H.
Marsily, Genslin, Honolulu, T. H.	1-10-'24	Dent. Corps	M.D. Det., 298th Inf., Honolulu, T. H.
McCallum, Lono, Honolulu, T. H.	4-19-'23	Infantry	Comdg. Co. F., 298th Inf., Honolulu, T. H.
McGregor, Daniel P., Honolulu, T. H.	5-15-'23	Q. M. Corps	Q. M. C., S. S. C. & D., Honolulu, T. H.
Mitchell, Eugene W., Hilo, Hawaii	1-17-'25	Med. Corps	M.D. Det., 299th Inf., Hilo, Hawaii
Mookini, Samuel K., Lahaina, Maui	8-31-'22	Infantry	Comdg. Co. A., 299th Inf., Lahaina, Maui
Morong, Frederic L., Honolulu, T. H.	9-13-'21	Med. Corps	Comdg. M. D., S. S. C. & D., Honolulu, T. H.
Naipo, Hiram K., Honolulu, T. H.	8-20-'23	Infantry	Comdg., Co. B, 298th Inf., Honolulu, T. H.
Olds, Clarence J., Honolulu, T. H.	11-15-'26	Infantry	Intel. Plans & Trng. Off., 298th Inf., Honolulu
Pakele, Jr., Peter N., Hilo, Hawaii	3-7-'24	Infantry	Comdg. Co. F, 299th Inf., Hilo, Hawaii
Porter, Paul B., Honolulu, T. H.	7-21-'25	Infantry	Comdg. Howitzer Co., 298th Inf., Honolulu
Robinson, James C., Paia, Maui	12-10-'24	Infantry	Comdg. Co. C, 299th Inf., Paia, Maui
Schaefer, Frederick A., Honolulu, T. H.	4-20-'24	Infantry	Adjutant, 298th Inf., Honolulu, T. H.
Sorensen, Lester P., Hilo, Hawaii	9-8-'25	Dent. Corps	M.D. Det., 299th Inf., Hilo, Hawaii
Starratt, Harold E., Olaa, Hawaii	1-2-'26	Infantry	Comdg. Co. G, 299th Inf., Olaa, Hawaii
Steiner, Harry, Honolulu, T. H.	5-11-'22	J. A. G. D.	Judge Adv. Gen., Haw. Nat. Guard, Honolulu
Stoddard, William B., Hilo, Hawaii	2-5-'26	Infantry	Comdg. Co. M, 298th Inf., Hilo, Hawaii
Turner, Farrant L., Honolulu, T. H.	7-8-'24	Infantry	Comdg. Co. E, 298th Inf., Honolulu, T. H.
Whelan, Arvin A., Waipahu, Oahu	2-23-'26	Infantry	Comdg. Co. G, 298th Inf., Waipahu, Oahu
Xavier, Francis, Honolulu, T. H.	5-6-'24	Ord. Dept.	Ord. Dept. S. S. C. & D., Honolulu, T. H.
Yap, James H., Honolulu, T. H.	9-14-'20	Infantry	Comdg. Co. C, 298th Inf., Honolulu, T. H.

## FIRST LIEUTENANTS

Ackland, Walter C., Honolulu, T. H.	7-8-'24	Infantry	Co. H, 298th Inf., Honolulu, T. H.
Ahin, George A. F., Hilo, Hawaii	10-26-'25	Infantry	Co. L, 299th Inf., Hilo, Hawaii
Chang, James T. M., Honolulu, T. H.	8-7-'26	Infantry	Co. C, 298th Inf., Honolulu, T. H.
Cornwell, Harvey K., Honolulu, T. H.	12-4-'22	Infantry	Co. F, 298th Inf., Honolulu, T. H.
Gall, Earl V., Honolulu, T. H.	10-25-'26	Infantry	Service Co., 298th Inf., Honolulu, T. H.
Hilliger, Arthur C., Honolulu, T. H.	4-1-'25	Infantry	Service Co., 298th Inf., Honolulu, T. H.
Hinaiu, Joseph, Lahaina, Maui	12-4-'22	Infantry	Co. A, 299th Inf., Lahaina, Maui
Hohu, Clarence K., Honolulu, T. H.	8-31-'22	Infantry	Co. E, 298th Inf., Honolulu, T. H.
Hohu, Edmund K., Hilo, Hawaii	3-7-'24	Infantry	Co. F, 299th Inf., Hilo, Hawaii
Kapukui, Claude A., Honolulu, T. H.	4-13-'24	Infantry	Co. B, 298th Inf., Honolulu, T. H.
Keamo, Henry, Papaikou, Hawaii	4-8-'26	Infantry	Co. E, 299th Inf., Papaikou, Hawaii
Lord, George M., Honolulu, T. H.	4-10-'26	Infantry	Comdg. Hq. Co., 1st Bn., 298th Inf., Honolulu
McEldowney, Robert R., Honolulu, T. H.	7-3-'24	Infantry	Comdg. Hq. Co., 2nd Bn., 298th Inf., Honolulu
Merrill, Hamilton, Kahului, Maui	10-27-'24	Infantry	Co. D, 299th Inf., Wailuku, Maui
Phillips, Lyle G., Honolulu, T. H.	10-15-'26	Med. Corps	M.D. Det. 298th Inf., Honolulu, T. H.
Pickerill, Alfred O., Pepekeo, Hawaii	9-10-'25	Infantry	Co. I, 298th Inf., Honomu, Hawaii
Rice, William H., Paia, Maui	10-16-'26	Infantry	Co. C, 299th Inf., Paia, Maui
Ross, Edward J., Honolulu, T. H.	4-19-'23	Infantry	Co. D, 298th Inf., Aiea, Oahu
Saunders, Cecil A., Honolulu, T. H.	4-1-'25	Med. Corps	M.D. Det., 298th Inf., Honolulu, T. H.
Schausten, Otto J., Hilo, Hawaii	8-10-'24	Infantry	Comdg. Hq. Co., 3rd Bn., 299th Inf., Hakalau
Tilley, William H., Waipahu, Oahu	2-23-'26	Infantry	Co. G, 298th Inf., Waipahu, Oahu
Warren, Charles J., Hilo, Hawaii	1-25-'26	Infantry	Co. G, 299th Inf., Olaa, Hawaii

## SECOND LIEUTENANTS

Anderson, Carl O., Paauilo, Hawaii	9-13-'26	Infantry	Comdg. Hq. Co., 3rd Bn., 298th Inf., Paauilo
Anderson, William H. E., Honomu, Hawaii	10-16-'25	Infantry	Co. I, 298th Inf., Honomu, Hawaii
Ah Hon, Henry, Honolulu, T. H.	4-1-'25	Infantry	Co. A, 298th Inf., Honolulu, T. H.

Name and Residence	Federally Recognized	Branch	Assignment
Brown, Dennis, Honolulu, T. H.	7-8-'24	Infantry	Comdg. Hqs. Co., 298th Inf., Honolulu, T.H.
Brown, William W., Hilo, Hawaii	3-7-'24	Infantry	Co. F, 299th Inf., Hilo, Hawaii
Chaves, Alverinos, Olaa, Hawaii	1-2-'26	Infantry	Co. G, 299th Inf., Olaa, Hawaii
Chock, Bernard K., Hilo, Hawaii	10-16-'25	Infantry	Co. L, 299th Inf., Hilo, Hawaii
David, Emil, Kahakuloa, Wailuku, Maui	Not yet	Infantry	Comdg. Co. B, 299th Inf., Wailuku, Maui
Gill, William H., Honolulu, T. H.	8-7-'26	Infantry	Co. A, 298th Inf., Honolulu, T.H.
Groves, George W., Aiea, Oahu	Not yet	Infantry	Co. D, 298th Inf., Aiea, Oahu
Ignacio, Frank W., Papaikou, Hawaii	4-8-'26	Infantry	Co. E, 299th Inf., Papaikou, Hawaii
Kahanamoku, David P., Honolulu, T.H.	8-20-'23	Infantry	Co. B, 298th Inf., Honolulu, T.H.
Kekahuna, James I. P., Honolulu, T. H.	8-31-'22	Infantry	Co. F, 298th Inf., Honolulu, T.H.
Leong, David S., Honolulu, T.H.	10-25-'26	Infantry	Hqs. Co., 2nd Bn., 298th Inf., Honolulu, T.H.
McInerney, George T., Lahaina, Maui	6-28-'24	Infantry	Co. A, 298th Inf., Lahaina, Maui
McKaig, Wallace L., Hilo, Hawaii	10-16-'25	Infantry	Co. M, 298th Inf., Hilo, Hawaii
Minvielle, Albert E., Honolulu, T. H.	8-26-'25	Infantry	Howitzer Co., 298th Inf., Honolulu, T.H.
Nathanief, Daniel H., Hilo, Hawaii	2-9-'26	Infantry	Co. M, 298th Inf., Hilo, Hawaii
Peck, Nohea O. A., Wailuku, Maui	10-16-'26	Infantry	Co. D, 299th Inf., Wailuku, Maui
Richardson, Arnold B. M., Honolulu, T.H.	7-8-'24	Infantry	Service Co., 298th Inf., Honolulu, T.H.
Robertson, Finlay, Hakalau, Hawaii	6-19-'26	Infantry	Hqs. Co., 3rd Bn., 299th Inf., Hakalau, Hawaii
Searle, Theodore C., Honolulu, T.H.	9-11-'26	Infantry	Co. E, 298th Inf., Honolulu, T.H.
Sheehan, John S., Honolulu, T.H.	7-9-'24	Infantry	Hqs. Co., 1st Bn., 298th Inf., Honolulu, T.H.
Vivas, Louis M., Honolulu, T.H.	4-1-'25	Q.M. Corps	Q.M.C. Co., S.S.C. & D., Honolulu, T.H.
Waters Theodore R., Waipahu, Oahu	4-6-'25	Infantry	Co. G, 298th Inf., Waipahu, Oahu
Young, Fred O., Honolulu, T. H.	4-3-'26	Infantry	C. H, 298th Inf., Honolulu, T.H.

WARRANT OFFICER

Maygrove, Rudolph W., Honolulu, T.H. ....10-31-'24 .....W.O.....Band Leader, 298th Inf. Honolulu, T.H.