



CENTER FOR EXCELLENCE
IN DISASTER MANAGEMENT & HUMANITARIAN ASSISTANCE

Forging Relationships

By Joe Martin



Perspectives

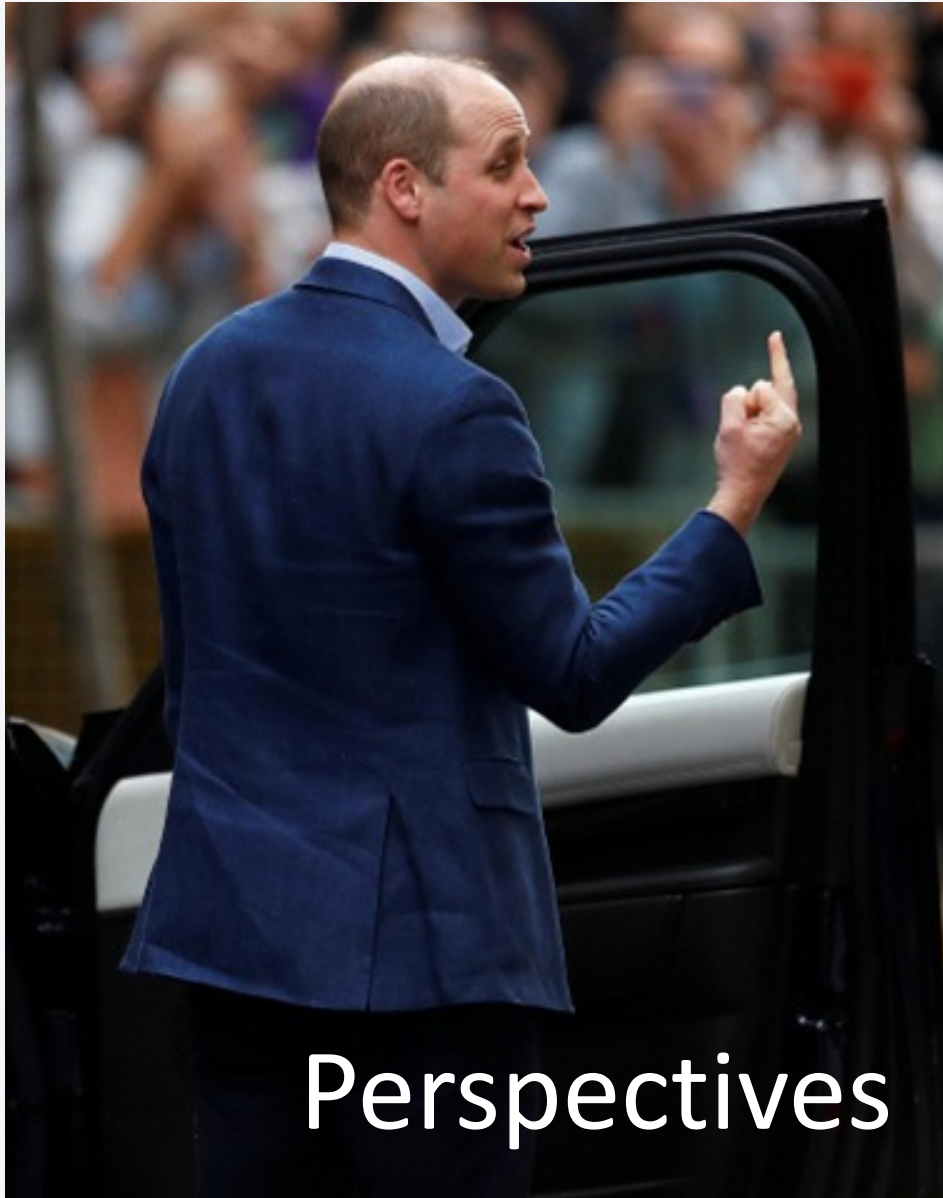
Prevail

Partnerships

CFE-DM

Climate Resilience

My 2c...



Perspectives



USINDOPACOM



MISSION

USINDOPACOM persistently integrates and employs credible, all-domain combat power in order to deter aggression, prevent and respond to crisis, and, if necessary, conduct decisive joint and combined operations to prevail in conflict. Integrating our operations in support of and supported by other U.S. Government agencies, the joint force will persistently operate in and across all domains to defend the homeland, deter strategic attack, counter aggression, protect U.S. interests throughout the Indo-Pacific, and enhance U.S. alliances and partnerships.

SAFEGUARDING INTERNATIONAL SYSTEMS

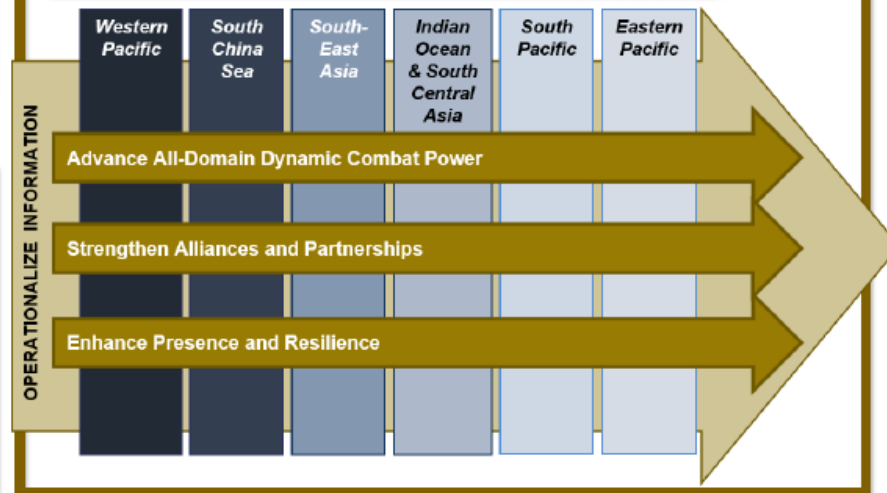


PRIORITY CHALLENGES & OPPORTUNITIES

- Campaigning for Integrated & Impactful Information Effects
- Fighting and Winning in an Environment of Global Conflict
- Accelerating Alliances and Partnerships and Leveraging Geography
- Assuring Effective Command and Control

This strategy advances a free and open Indo-Pacific, builds connections and resilience in the theater, and promotes regional prosperity, security, and stability through partnership, presence, and military readiness.

APPROACH

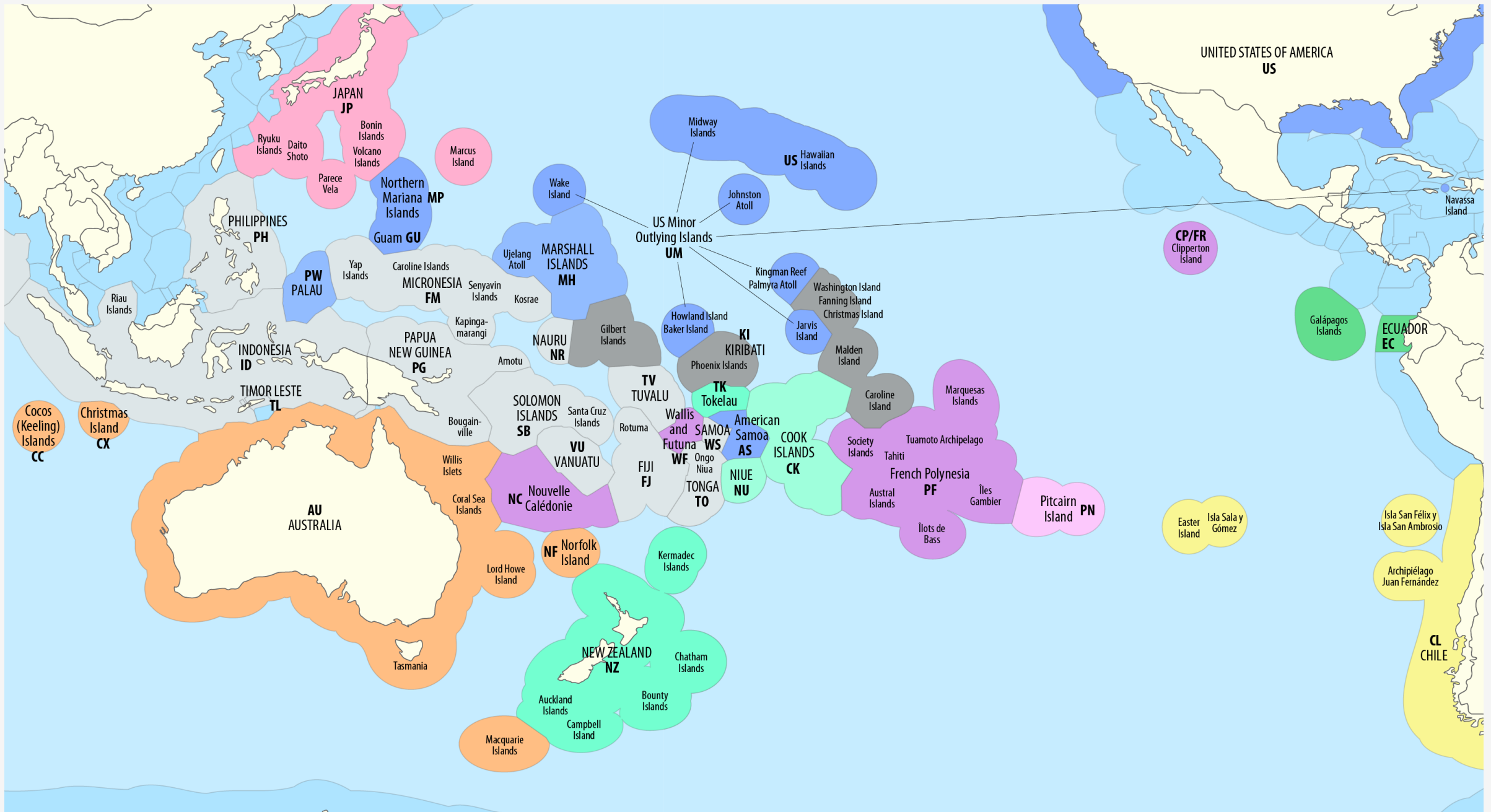


ENDURING STATES

- Deterrence is maintained and prevents unilateral changes to regional order and a stable status quo
- USINDOPACOM possesses military advantages to prevail in competition, crisis, and conflict through the integration of full spectrum military operations
- Allies and partners are integrated into dynamic relationships and security frameworks to bolster the rule-based international order
- U.S., Allies, and partners provide asymmetric overmatch capable of denying adversary aggressive or coercive objectives in the region
- Together with Allies and partners, the U.S. safeguards the international systems and norms that benefit all countries throughout the region

2027

2035



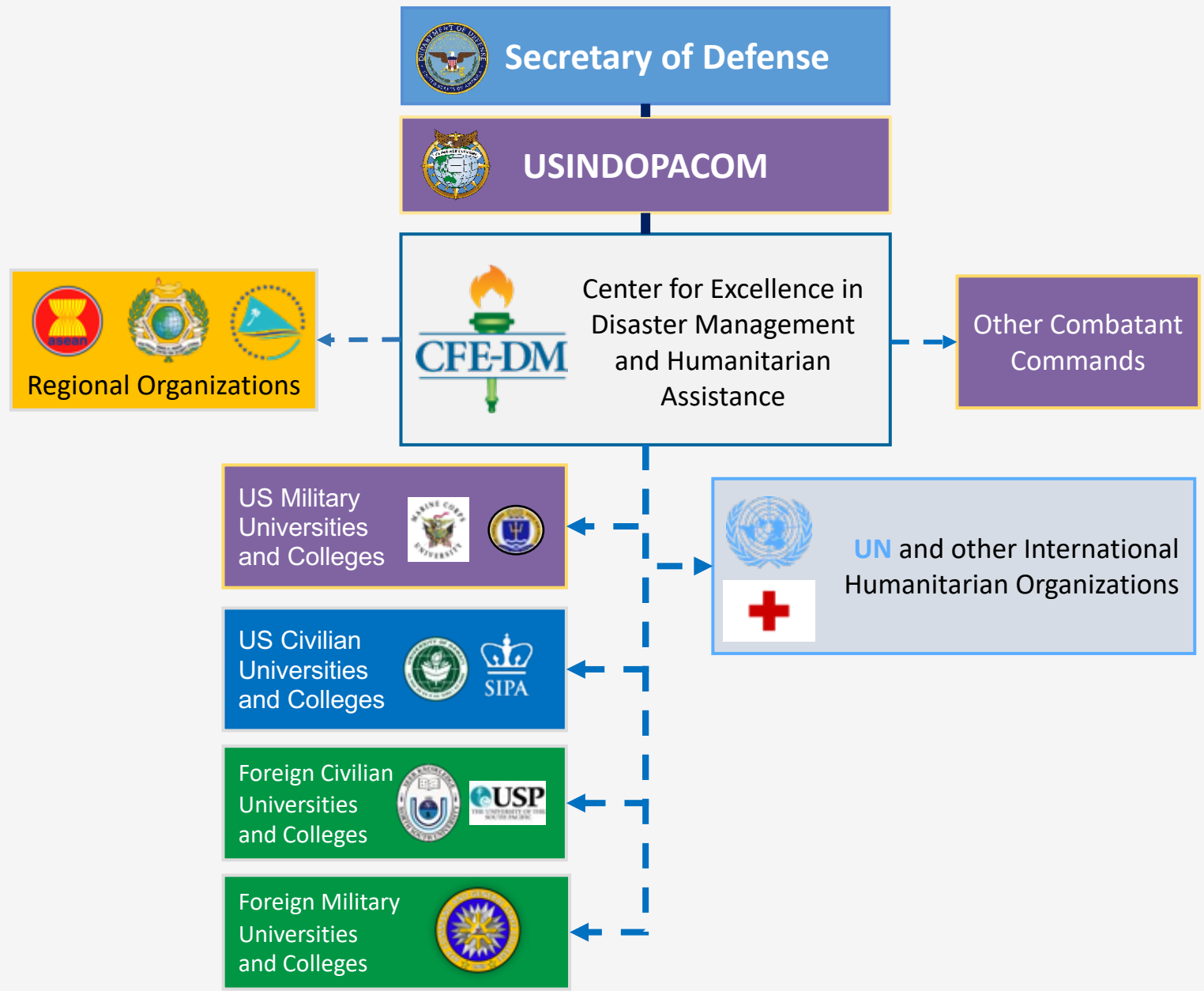


Mission

CFE-DM builds crisis response capacity in U.S. and Partner militaries, enhances coordination and collaboration with civilian and foreign partners, and strengthens those relationships to save lives and alleviate human suffering before, during, and after humanitarian crises in a changing climate environment.

Vision

Resilient Joint Forces, Allies, and Partners that are fully prepared to respond across the spectrum of humanitarian crises.





Climate Change Impacts

Climate Science

- Greenhouse gas emissions
- Increased air temperatures
- Increased land temperatures
- Increased ocean temperatures

Environmental Impacts

- Glacier/ ice cap melting
- Change in weather (wind, temp, precipitation)
- More intense storms
- Sea level rise
- Ocean acidification

Human Security Impacts

- Water scarcity
- Food security
- Livability
- Health & disease
- Infrastructure & utilities
- Critical services
- Displacement, migration & mobility

State Security Impacts

- Increasing need for HADR
- Resource competition
- Internal and external migrations
- Increased stress on fragile governments
- Exclusive Economic Zones

Military Impacts

- Increase in HADR response
- Effects on personnel
- Risks to steady state operations
- Loss of training time / locations
- Risk to Forward Locations
- Potential for Conflict

Understand the readiness and conflict implications of climate change and partner to identify and implement solutions



Military Impacts

<<<< IMPACT ON READINESS >>>>



Damage from sea level rise and extreme weather on facilities, bases, forward operating locations



Impacts of extreme weather on land, sea, air operations



Increase in number & complexity of HADR missions



Damage to training ranges and reduced training time



Impacts on personnel health and protection measures



Potential conflicts over resources



Exacerbation of potential tensions related to displacement and migration



Instability from climate impacts on weak or failing governments



Potential weaponization of climate change impacts



Climate change impacts as opportunities for access and influence

<<<< POTENTIAL FOR CONFLICT >>>>



My 2c...

Joseph.D.Martin50.civ@us.navy.mil

Center for Excellence in Disaster Management & Humanitarian Assistance
456 Hornet Avenue, Building 76 | Joint Base Pearl Harbor-Hickam, HI 96860-
5303

TEL: 808.472.0518 | FAX: 808.472.0382

Download free resources at www.cfe-dmha.org