

PROVIDE FIRE SUPPRESSION  
FOAM SYSTEM WITHIN THIS  
BOUNDARY

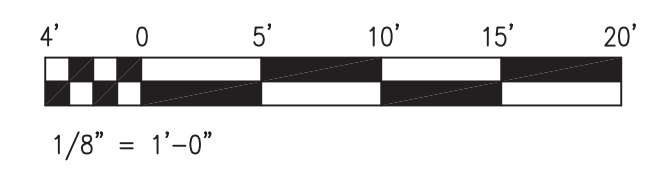
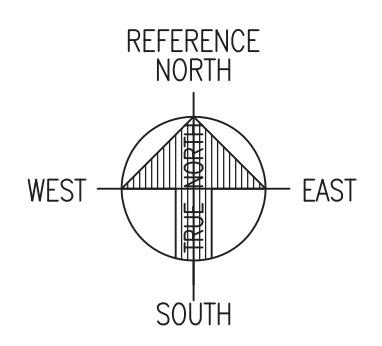
TEST HEADER

PROVIDE FIRE SUPPRESSION  
FOAM SYSTEM WITHIN THIS  
BOUNDARY

FOAM GENERATOR  
(TYPICAL)

LEGEND	
SYMBOL	DESCRIPTION
	1 HOUR FIRE RESISTIVE CONSTRUCTION
	2 HOUR FIRE RESISTIVE CONSTRUCTION

1 HANGAR LOW LEVEL FIRE SUPPRESSION PLAN  
F-104 F-104 SCALE: 1/8" = 1' - 0"



IF SHEET IS LESS THAN  
22 x 34  
IT IS A REDUCED PRINT-  
SCALE REDUCED ACCORDINGLY

The Contractor will be responsible  
for coordinating the work among  
the various trades as necessary to  
avoid conflicts and to insure the  
installation of all work within the  
available space.

RICHARD MATSUNAGA  
& ASSOCIATES  
ARCHITECTS INC.



EXP. 09/30/2012  
THIS WORK WAS PREPARED BY ME  
OR UNDER MY SUPERVISION

REVISION NO	DESCRIPTION	DATE	BY	CHK'D

DESIGNED: JTH		DATE: FEB 11, 2011	
DRAWN: JS		SCALE: AS NOTED	
SAFETY: HANGAR LOW LEVEL FIRE SUPPRESSION PLAN		DWG: F-104	
SECURITY: HANGAR LOW LEVEL FIRE SUPPRESSION PLAN		SHEET 34 OF 49	
APPROVED: 154 WG / BCE	APPROVED: 154 WG / CC	TAG - HAWAII	
APPROVED: HWANG / CC	APPROVED: HWANG / CDE	154 CES / CEC PROJ ENGR	

HAWAII AIR NATIONAL GUARD  
154TH AIR WING  
HICKAM AIR FORCE BASE, OAHU, HAWAII

PROVIDE WET PIPE FIRE SPRINKLER PIPING PROTECTION WITHIN BOUNDARY FROM EXISTING WET PIPE RISER

PROVIDE WET PIPE FIRE SPRINKLER PIPING PROTECTION WITHIN BOUNDARY

PIPING SHALL NOT PASS OVER THESE AREAS

WET PIPE FIRE SPRINKLER RISER DETAIL, SEE 1 F-105 F-501

PROVIDE WET PIPE FIRE SPRINKLER PIPING PROTECTION WITHIN BOUNDARY

6" WATER SUPPLY

8"

8"

8"

32'-0"  
DO NOT SCALE

DRAIN PIT, SEE SECTION DETAIL 6 F-105 F-502

NOTE: REPLACE ALL EXISTING SPRINKLERS ON EXISTING WET PIPE SYSTEM

2 F-105 F-301

DIVERTER VALVE PIT, AND 3 F-105 F-502 AND 4 F-105 F-502

1 F-105 F-301

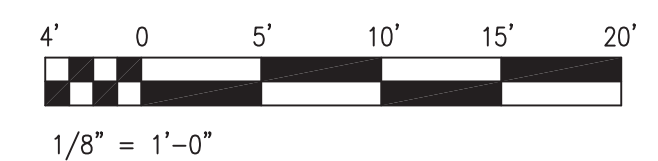
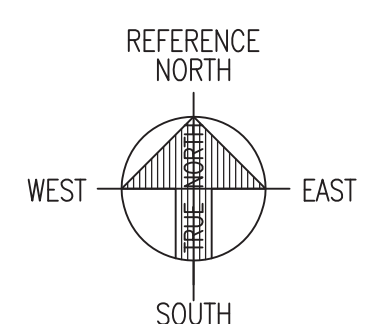
PUMP HOUSE

POINT OF CONNECTION TO WATER SUPPLY

FIRE PUMP HOUSE, SHOWN FOR CLARITY ONLY

LEGEND	
SYMBOL	DESCRIPTION
	1 HOUR FIRE RESISTIVE CONSTRUCTION
	2 HOUR FIRE RESISTIVE CONSTRUCTION

1 HANGAR FIRE SUPPRESSION PLAN  
F-105 F-105 SCALE: 1/8" = 1' - 0"



IF SHEET IS LESS THAN 22 x 34 IT IS A REDUCED PRINT—SCALE REDUCED ACCORDINGLY

The Contractor will be responsible for coordinating the work among the various trades as necessary to avoid conflicts and to insure the installation of all work within the available space.

RICHARD MATSUNAGA & ASSOCIATES ARCHITECTS INC.



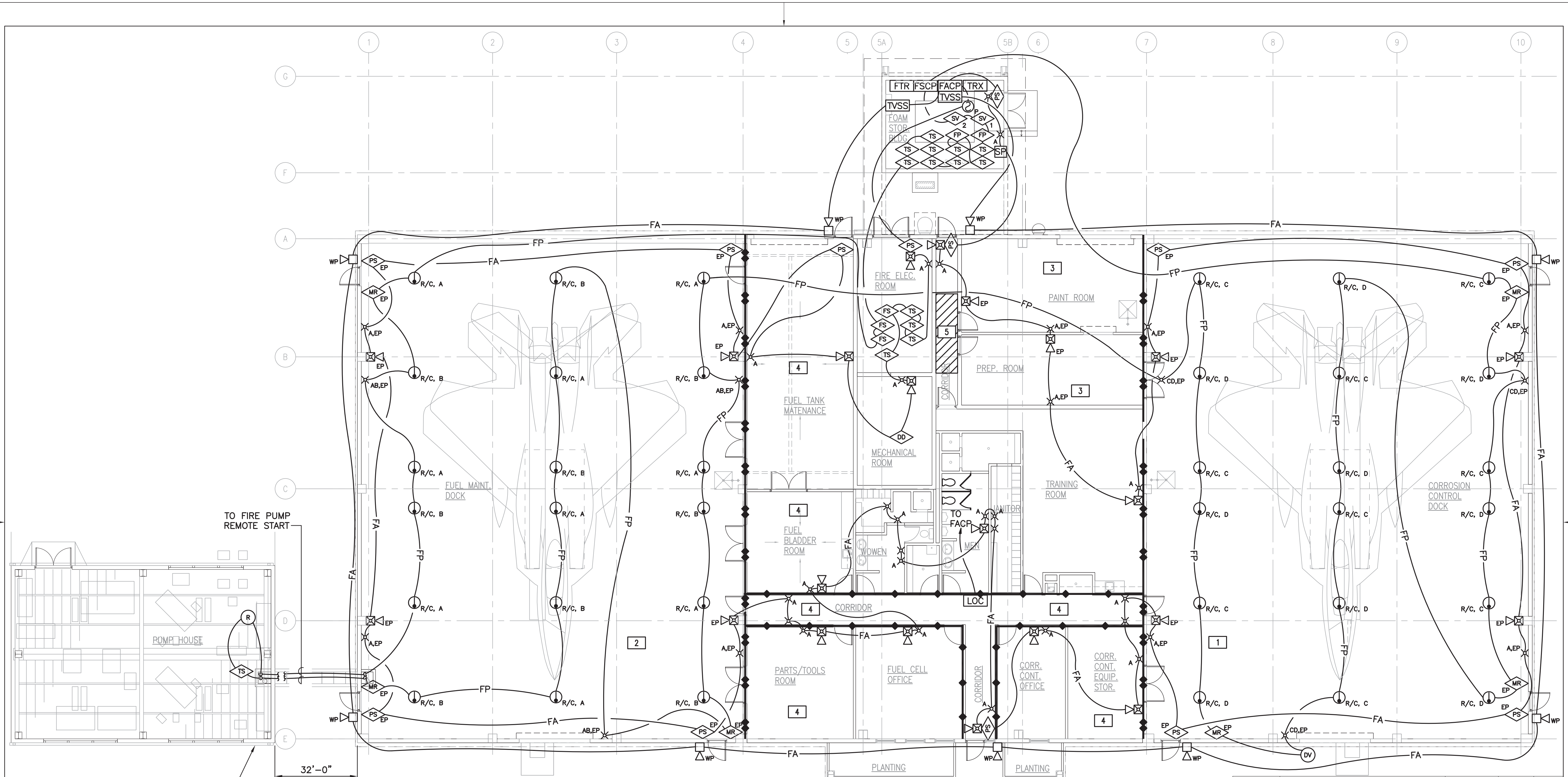
EXP. 09/30/2012  
THIS WORK WAS PREPARED BY ME OR UNDER MY SUPERVISION

REVISION NO	DESCRIPTION	DATE	BY	CHK'D

DESIGNED: JTH		DATE: FEB 11, 2011
DRAWN: JS		SCALE: AS NOTED
SAFETY: HANGAR FIRE SUPPRESSION PLAN		DWG: F-105
SECURITY: HANGAR FIRE SUPPRESSION PLAN		SHEET 35 OF 49
APPROVED: 154 WG / BCE	APPROVED: 154 WG / CC	
APPROVED: HANG / CC	APPROVED: HANG / CDE	
APPROVED: TAG - HAWAII	APPROVED: 154 CES / CEC PROJ ENGR	



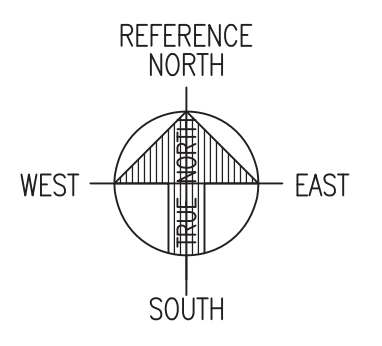
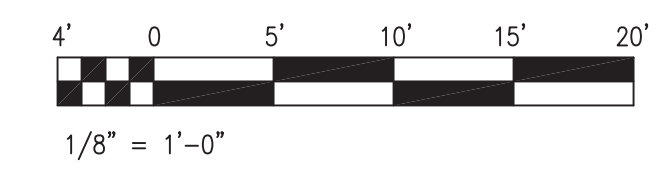


FIRE PUMP HOUSE, SHOWN FOR CLARITY ONLY

LEGEND	
SYMBOL	DESCRIPTION
	1 HOUR FIRE RESISTIVE CONSTRUCTION
	2 HOUR FIRE RESISTIVE CONSTRUCTION

- NOTES:**
- ALL RACEWAYS LOCATED IN CLASS 1, DIV 1 OR 2 AREAS SHALL BE EXPLOSION PROOF IN ACCORDANCE WITH NEC.
- 1 CLASS 1, DIV. 1 TO TOP OF HANGAR DOOR
  - 2 CLASS 1, DIV. 2 TO TOP OF HANGAR DOOR
  - 3 CLASS 1, DIV. 1
  - 4 CLASS 1, DIV. 2 18" AFF
  - 5 CLASS 1, DIV. 2 TO CEILING

1 HANGAR FIRE ALARM PLAN  
 F-106 F-106 SCALE: 1/8" = 1' - 0"



IF SHEET IS LESS THAN 22 x 34 IT IS A REDUCED PRINT-SCALE REDUCED ACCORDINGLY

The Contractor will be responsible for coordinating the work among the various trades as necessary to avoid conflicts and to insure the installation of all work within the available space.

RICHARD MATSUNAGA & ASSOCIATES ARCHITECTS INC.



EXP. 09/30/2012  
 THIS WORK WAS PREPARED BY ME OR UNDER MY SUPERVISION

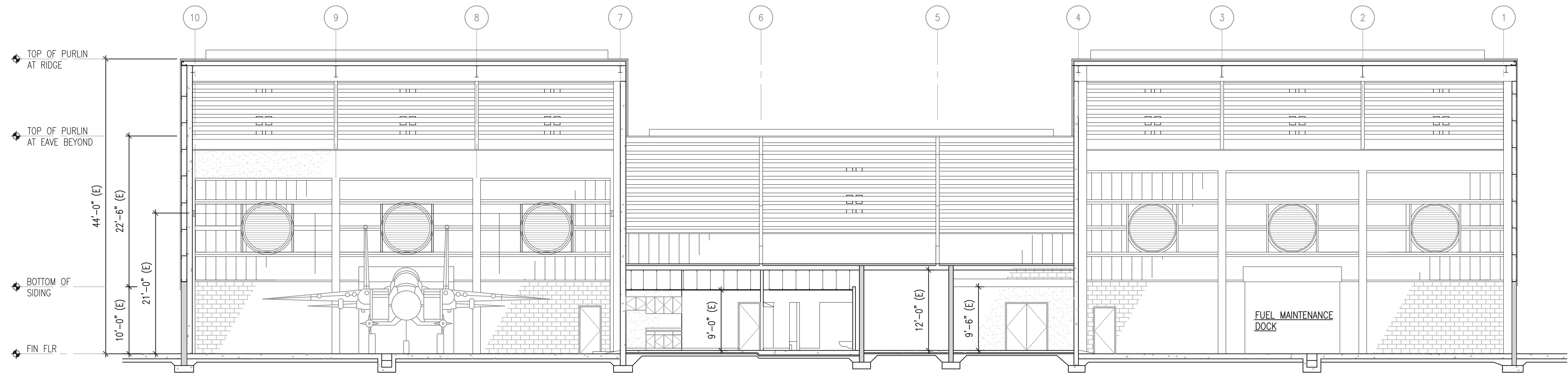
REVISION NO	DESCRIPTION	DATE	BY	CHK'D

HAWAII AIR NATIONAL GUARD  
 154TH AIR WING  
 HICKAM AIR FORCE BASE, OAHU, HAWAII

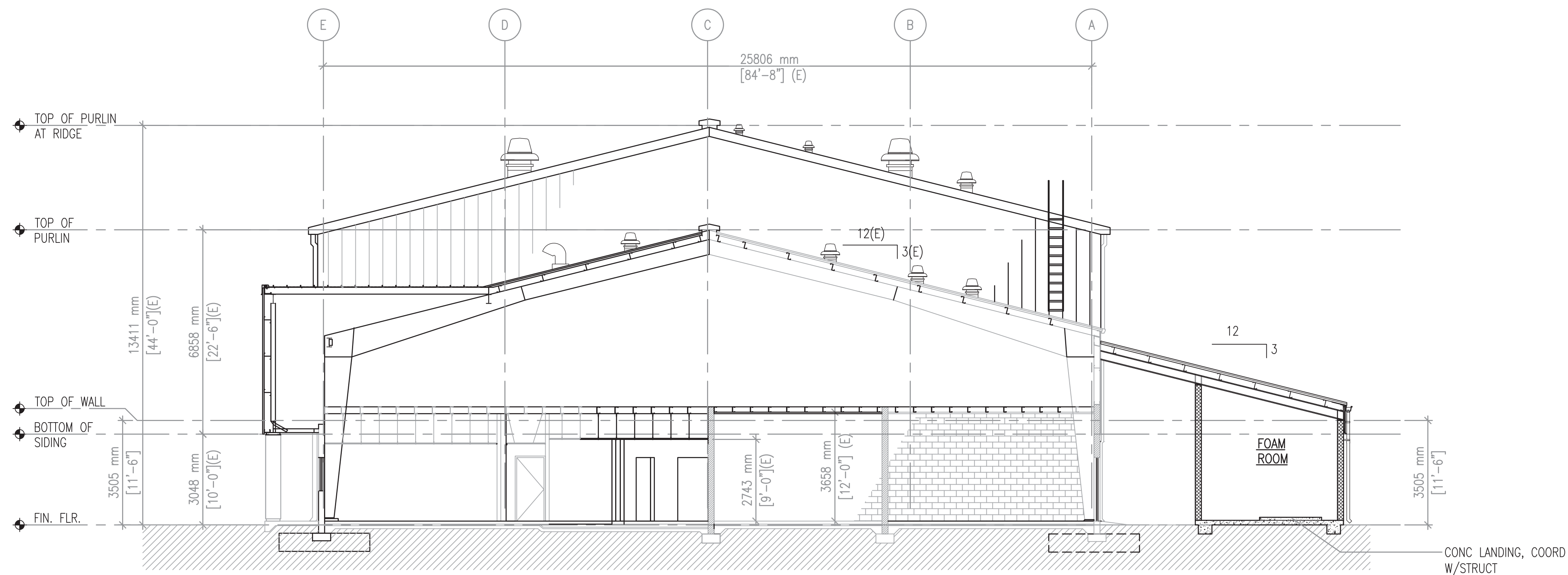
DESIGNED: JTH  
 DRAWN: JS  
 SAFETY:  
 SECURITY:

HANGAR FIRE ALARM PLAN

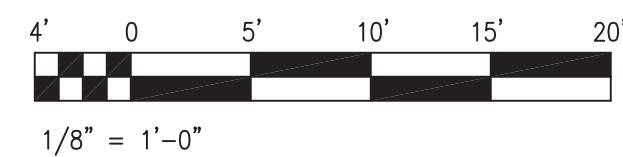
APPROVED:	APPROVED:	DATE:
154 WG / BCE	154 WG / CC	FEB 11, 2011
APPROVED:	APPROVED:	SCALE: AS NOTED
154 WG / CC	154 WG / CDE	ENG: F-106
APPROVED:	APPROVED:	SHEET 36 OF 49
TAG - HAWAII	154 CES / CEC PROJ ENGR	



1 NEW FIRE SUPPRESSION LONGITUDINAL SECTION (EAST) - HANGAR  
 F-105 | F-301 SCALE: 1/8" = 1' - 0"



2 NEW FIRE SUPPRESSION CROSS SECTION (NORTH/MIDDLE) - HANGAR  
 F-105 | F-301 SCALE: 1/8" = 1' - 0"



IF SHEET IS LESS THAN 22 x 34 IT IS A REDUCED PRINT-SCALE REDUCED ACCORDINGLY

The Contractor will be responsible for coordinating the work among the various trades as necessary to avoid conflicts and to insure the installation of all work within the available space.

REVISION NO	DESCRIPTION	DATE	BY	CHK'D

		HAWAII AIR NATIONAL GUARD 154TH AIR WING HICKAM AIR FORCE BASE, OAHU, HAWAII		
DESIGNED:	JTH			
DRAWN:	JS			
SAFETY:		CROSS SECTIONS - HANGAR BUILDING		
SECURITY:				
APPROVED:		APPROVED:		DATE: FEB 11, 2011
154 WG / BCE		154 WG / CC		SCALE: AS NOTED
154 WG / CC		154 WG / CDE		DWG # F-301
154 WG / CC		154 WG / CEC PROJ ENGR		SHEET 37 OF 49