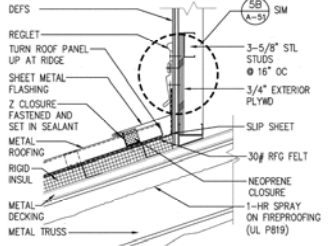
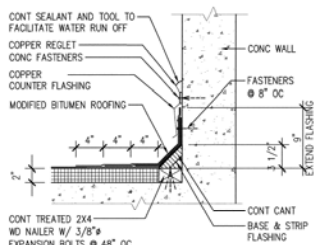


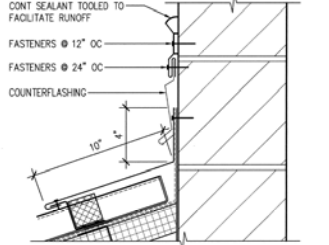
6A PARAPET CAP
SECTION
SC: 1-1/2" = 1'-0"



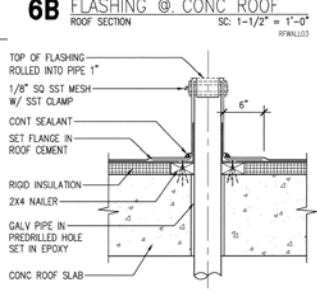
5A FLASHING @ FALSE COLUMN
SECTION
SC: 1-1/2" = 1'-0"



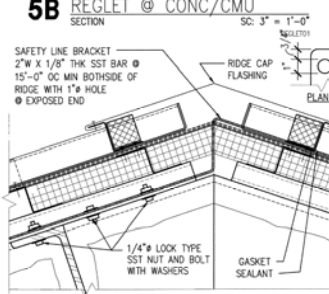
6B FLASHING @ CONC ROOF
ROOF SECTION
SC: 1-1/2" = 1'-0"



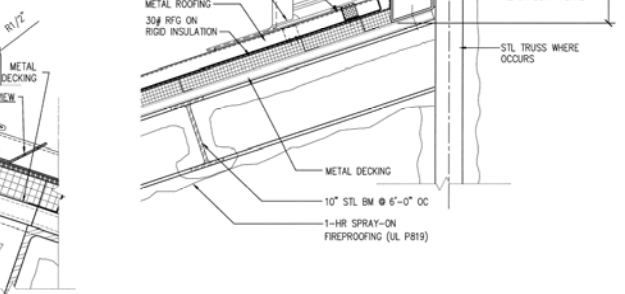
5B REGLET @ CONC/CMU
SECTION
SC: 3" = 1'-0"



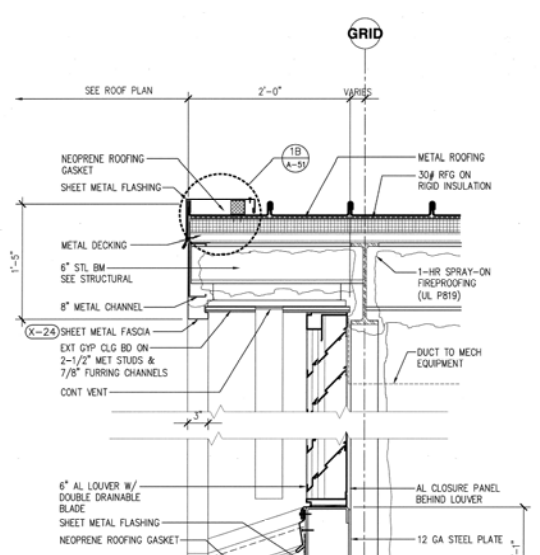
6C CONCRETE ROOF VTR
SECTION @ CONC ROOF
SC: 1-1/2" = 1'-0"



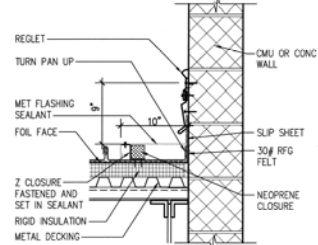
5C SAFETY LINE BRACKET
SECTION
SC: 3" = 1'-0"



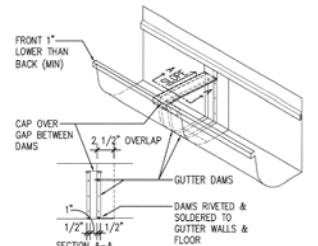
4C TYPICAL GABLE END ROOF LOUVER
SECTION
SC: 1-1/2" = 1'-0"



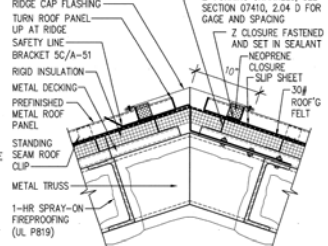
2A FLASHING @ WALL
SECTION @ CONC/CMU
SC: 1-1/2" = 1'-0"



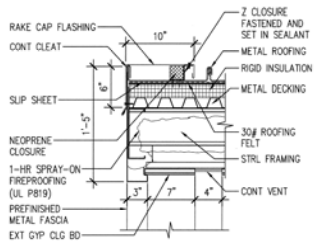
2B SIDEWALL FLASHING @ WALL
SECTION
SC: 1-1/2" = 1'-0"



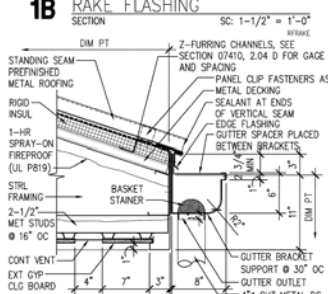
2C GUTTER EXPANSION JOINT
ISOMETRIC/SECTION
SC: 1-1/2" = 1'-0"



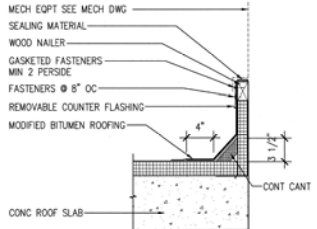
1A RIDGE FLASHING
SECTION
SC: 1-1/2" = 1'-0"



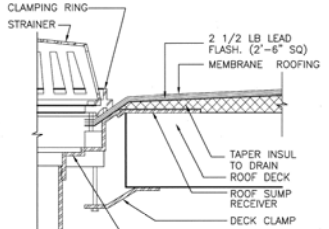
1B RAKE FLASHING
SECTION
SC: 1-1/2" = 1'-0"



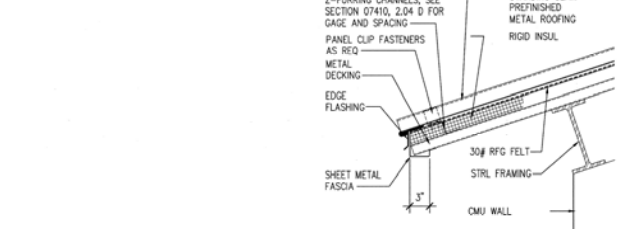
1C GUTTER & FASCIA DETAIL
SECTION
SC: 1-1/2" = 1'-0"



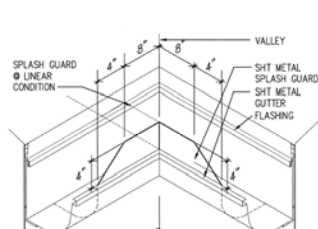
6D ROOF CURB
SECTION @ CONC ROOF
SC: 1-1/2" = 1'-0"



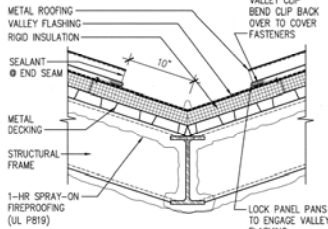
5D ROOF AREA DRAIN/OVERFLOW
SECTION @ CONC ROOF
SC: 3" = 1'-0"



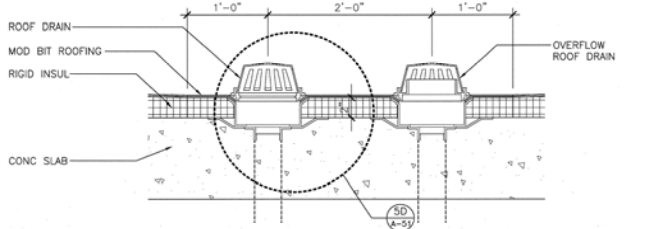
3D FASCIA
OMS COMP SECTION
SC: 1-1/2" = 1'-0"



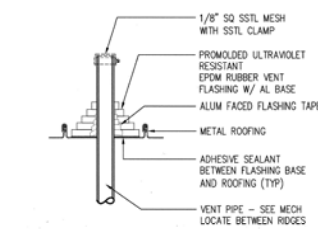
2D GUTTER SPLASH GUARD
ISOMETRIC/SECTION @ VALLEY
SC: 1-1/2" = 1'-0"



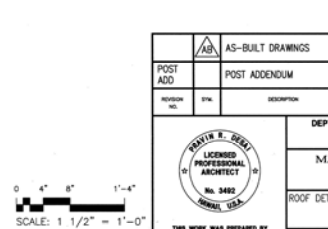
1D VALLEY FLASHING
SECTION
SC: 1-1/2" = 1'-0"



6E ROOF DRAIN AND OVERFLOW
SECTION @ CONC ROOF
SC: 1-1/2" = 1'-0"



2E METAL ROOF VTR
SECTION
SC: 1-1/2" = 1'-0"



AS-BUILT DRAWINGS		7/09
POST ADD	POST ADDENDUM	27/11/28/02
PROJ NO.	DTA	DESCRIPTION
		DEPT. OF ACCOUNTING & GENERAL SERVICES DIVISION OF PUBLIC WORKS STATE OF HAWAII MAUI ARMY NATIONAL GUARD PUNENE ARMORY PUNENE, MAUI, HAWAII ROOF DETAILS
THIS WORK WAS PREPARED BY ME OR UNDER MY SUPERVISION		CDS International DRAWN BY: RD CHECKED BY: PD DATE: 15-14-7103 SCALE: 1 1/2" = 1'-0" SCALE: 3" = 1'-0"
SIGNATURE: APRIL 30, 2004 EXPIRES DATE OF THE LICENSE		DATE: JULY 2002 SCALE: 1 1/2" = 1'-0" SCALE: 3" = 1'-0"