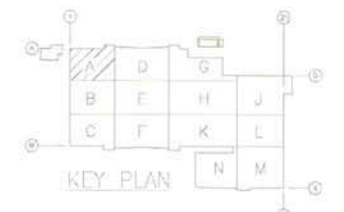
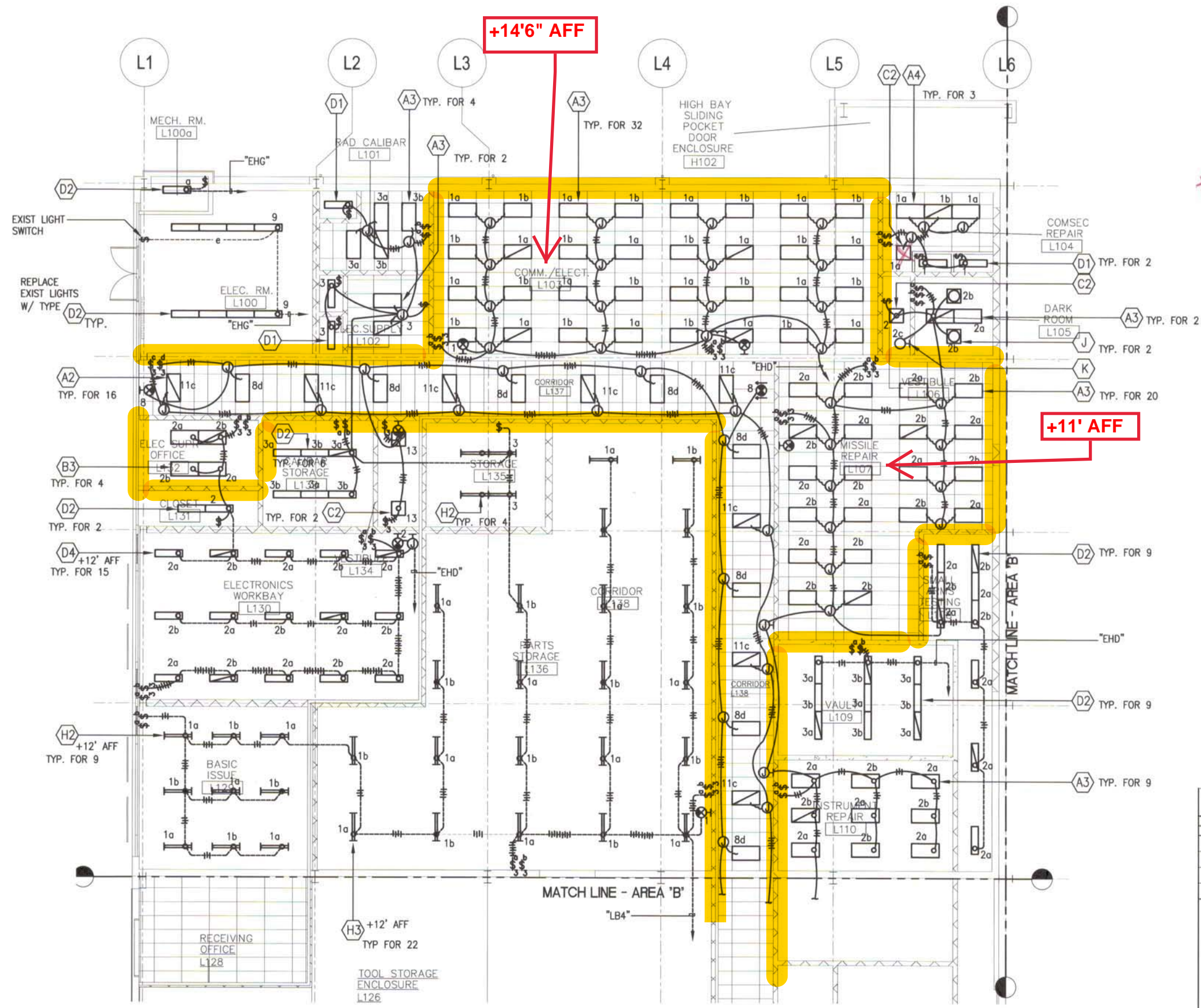


GENERAL NOTES:

1. COORDINATE LIGHT FIXTURE INSTALLATION TO AVOID CONFLICT WITH OVERHEAD CRANE PRIOR TO START OF WORK.
2. ALL STEM MTD FIXTURES SHALL BE SEISMICALLY BRACED TO AVOID ANY LATERAL MOVEMENT. SEISMIC BRACING SHALL BE RATED FOR USE IN A SEISMIC ZONE 2A LOCATION.
3. VERIFY CEILING TYPES WITH ARCHITECTURAL DRAWING.
4. PROVIDE OCCUPANCY SENSORS FOR LIGHTING CONTROLS IN ALL AREAS EXCEPT ELECTRICAL ROOMS (L100, L112) AND VAULT (L109).

\* SEE LOW VOLTAGE LIGHTING CONTROL PLAN FOR ALL LIGHTING



1  
E9.01 E9.01  
SCALE: 1/8" = 1'-0"  
**GROUND FLOOR - AREA "A" - NEW LIGHTING PLAN**

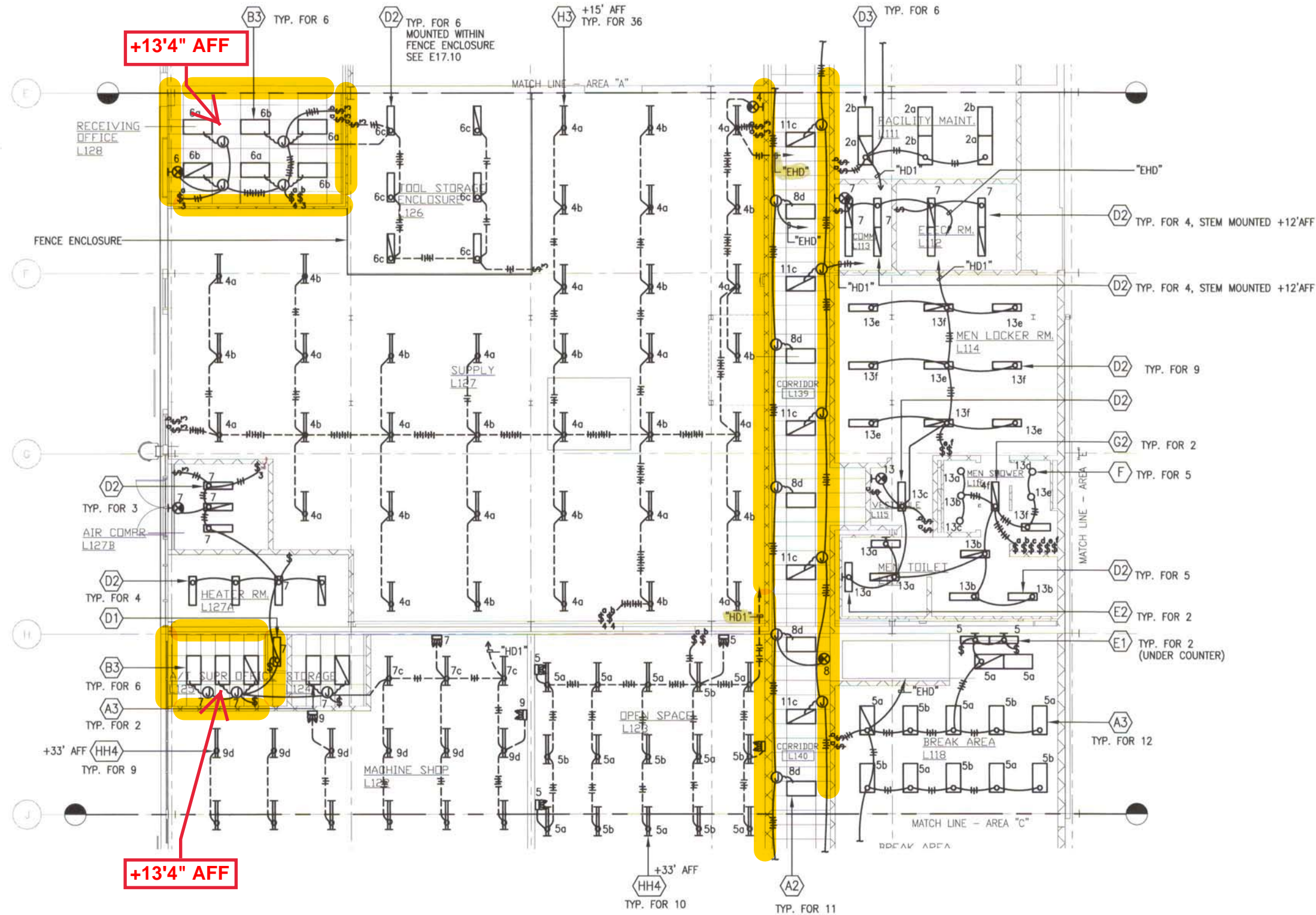


|   |                    |             |             |
|---|--------------------|-------------|-------------|
| SUBMITTAL   |                    |             |             |
| <b>100% DESIGN SUBMITTAL</b>  |                    |             |             |
| Revision Schedule   |                    |             |             |
| Rev #   | Description        | Date        | Approved:   |
|   |                    |             |             |
|   |                    |             |             |
|    |                    |             |             |
| DEPARTMENTS OF THE ARMY AND AIR FORCE<br>ARMY NATIONAL GUARD OF HAWAII<br>FACILITY MANAGEMENT OFFICE  |                    |             |             |
| COMBINED SUPPORT MAINTENANCE FACILITY #1<br>ADDITIONS & ALTERATIONS TO BUILDING 117, PHASE 2<br>KALAELOA (FORMER BARBERS POINT NAS), HAWAII |                    |             |             |
| <b>GROUND FLOOR - AREA "A" - NEW LIGHTING PLAN</b>  |                    |             |             |
| R. MATSUNAGA AND ASSOC., ARCH. INC.   |                    | PROJECT NO. | DRAWING NO. |
| DESIGNED BY:<br>CK  | CHECKED BY:<br>GO  | 150077      | E9.01       |
| DRAWN BY:<br>SN   | APPROVED BY:<br>GO | DATE        | SHEET       |
| SCALE:  | APRIL 8, 2011      | 303         | 392         |

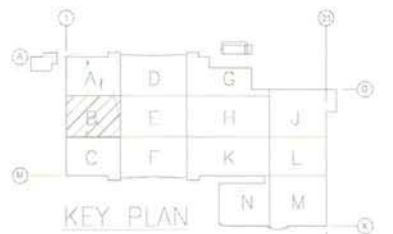
THIS WORK WAS PREPARED BY ME OR UNDER MY SUPERVISION.  
*Calvin C. B. Kwan*  
SIGNATURE

SHEET ISSUE DATE: 04/08/11





- GENERAL NOTES:
- COORDINATE LIGHT FIXTURE INSTALLATION TO AVOID CONFLICT WITH OVERHEAD CRANE PRIOR TO START OF WORK.
  - ALL STEM MTD FIXTURES SHALL BE SEISMICALLY BRACED TO AVOID ANY LATERAL MOVEMENT. SEISMIC BRACING SHALL BE RATED FOR USE IN A SEISMIC ZONE 2A LOCATION.
  - VERIFY CEILING TYPES WITH ARCHITECTURAL DRAWING.
  - PROVIDE OCCUPANCY SENSORS FOR LIGHTING CONTROLS IN ALL AREAS EXCEPT ELECTRICAL ROOMS (L100, L112) AND VAULT (L109).
  - WORKS RELATED TO ROOMS L119, L120, L121, L122, L123, L124, L125, SHALL BE PART OF OBI#002.



1 GROUND FLOOR - AREA "B" - NEW LIGHTING PLAN  
 E9.02 | E9.02 SCALE: 1/8" = 1'-0"



| SUBMITTAL: 100% DESIGN SUBMITTAL |             |      |           |
|----------------------------------|-------------|------|-----------|
| Rev #                            | Description | Date | Approved: |
|                                  |             |      |           |
|                                  |             |      |           |

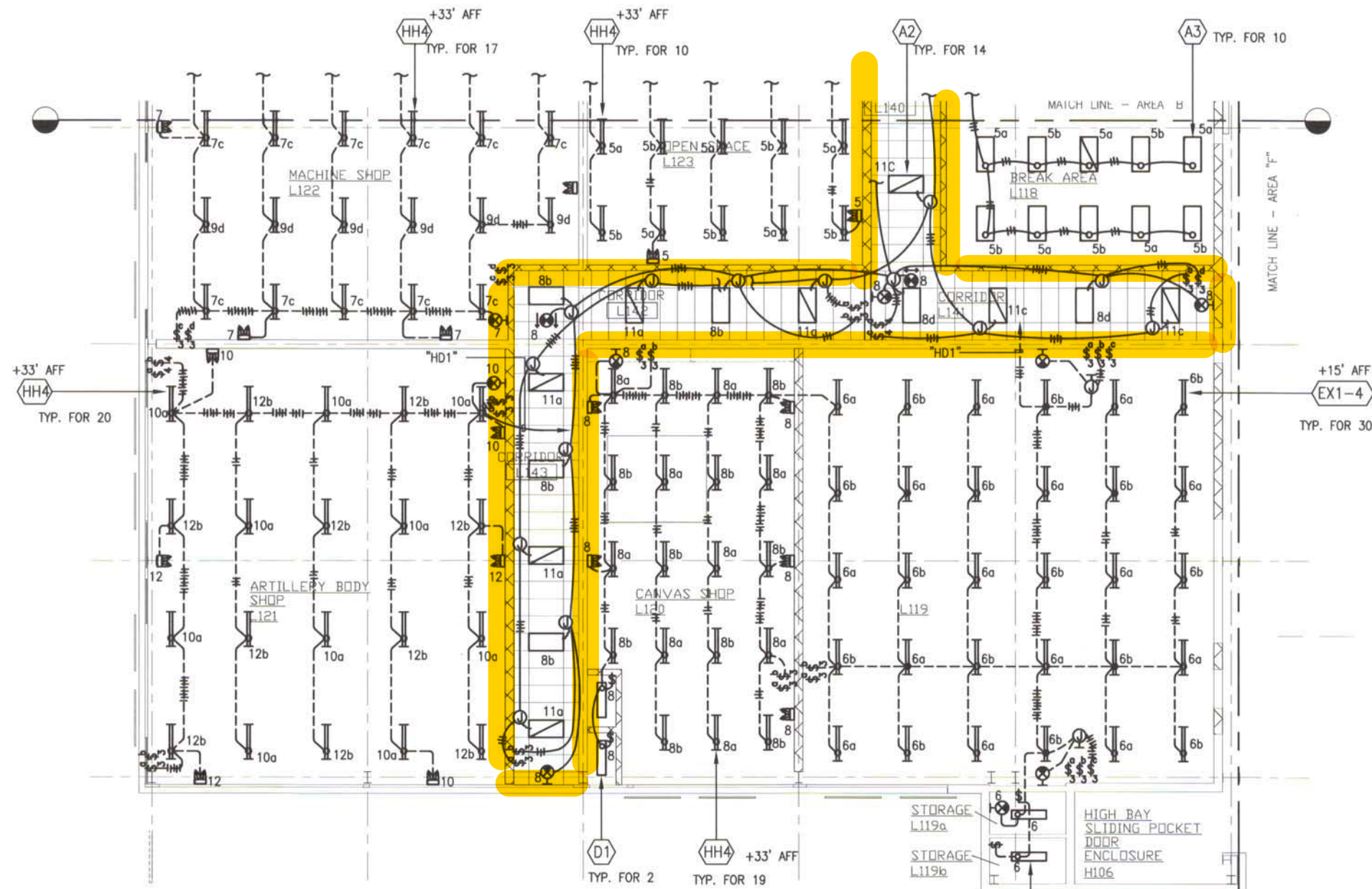
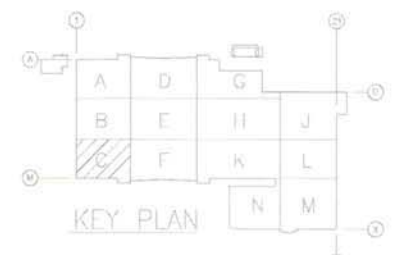
|   |   |  |   |
|---|---|--|---|
|   | DEPARTMENTS OF THE ARMY AND AIR FORCE<br>ARMY NATIONAL GUARD OF HAWAII<br>FACILITY MANAGEMENT OFFICE  |  |   |
|   | COMBINED SUPPORT MAINTENANCE FACILITY #1<br>ADDITIONS & ALTERATIONS TO BUILDING 117, PHASE 2<br>KALAELOA (FORMER BARBERS POINT NAS), HAWAII |  |   |
| <b>GROUND FLOOR - AREA "B" - NEW LIGHTING PLAN</b>        |   |  |   |
| THIS WORK WAS PREPARED BY ME OR UNDER MY SUPERVISION.<br> |   | R. MATSUNAGA AND ASSOC., ARCH. INC.<br>DESIGNED BY: CK<br>DRAWN BY: SN<br>SCALE: | PROJECT NO. 150077<br>CHECKED BY: GO<br>APPROVED BY: GO<br>DATE: APRIL 8, 2011<br>DRAWING NO. E9.02<br>SHEET 304 OF 392 |

SHEET ISSUE DATE: 04/08/11

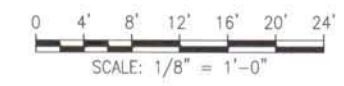


**GENERAL NOTES:**

1. COORDINATE LIGHT FIXTURE INSTALLATION TO AVOID CONFLICT WITH OVERHEAD CRANE PRIOR TO START OF WORK.
2. ALL STEM MTD FIXTURES SHALL BE SEISMICALLY BRACED TO AVOID ANY LATERAL MOVEMENT. SEISMIC BRACING SHALL BE RATED FOR USE IN A SEISMIC ZONE 2A LOCATION.
3. VERIFY CEILING TYPES WITH ARCHITECTURAL DRAWING.
4. PROVIDE OCCUPANCY SENSORS FOR LIGHTING CONTROLS IN ALL AREAS EXCEPT ELECTRICAL ROOMS (L100, L112) AND VAULT (L109).



**GROUND FLOOR - AREA "C" - NEW LIGHTING PLAN**  
 E9.03 SCALE: 1/8" = 1'-0"



| 100% DESIGN SUBMITTAL |             |      |          |
|-----------------------|-------------|------|----------|
| Rev #                 | Description | Date | Approved |
|                       |             |      |          |
|                       |             |      |          |

|  |   |  |   |
|--|---|--|---|
|  | DEPARTMENTS OF THE ARMY AND AIR FORCE<br>ARMY NATIONAL GUARD OF HAWAII<br>FACILITY MANAGEMENT OFFICE  |  |   |
|  | COMBINED SUPPORT MAINTENANCE FACILITY #1<br>ADDITIONS & ALTERATIONS TO BUILDING 117, PHASE 2<br>KALAELOA (FORMER BARBERS POINT NAS), HAWAII |  |   |
| <b>GROUND FLOOR - AREA "C" - NEW LIGHTING PLAN</b>                               |   |  |   |
| R. MATSUNAGA AND ASSOC., ARCH. INC.<br>DESIGNED BY: CK<br>DRAWN BY: SN<br>SCALE: | CHECKED BY: GO<br>APPROVED BY: GO   | PROJECT NO.: 150077<br>DATE: APRIL 8, 2011 | DRAWING NO.: E9.03<br>SHEET: 305<br>OF: 392 |

THIS WORK WAS PREPARED BY ME OR UNDER MY SUPERVISION.

*Calvin C. B. Kwan*  
 SIGNATURE

SHEET ISSUE DATE: 04/08/11