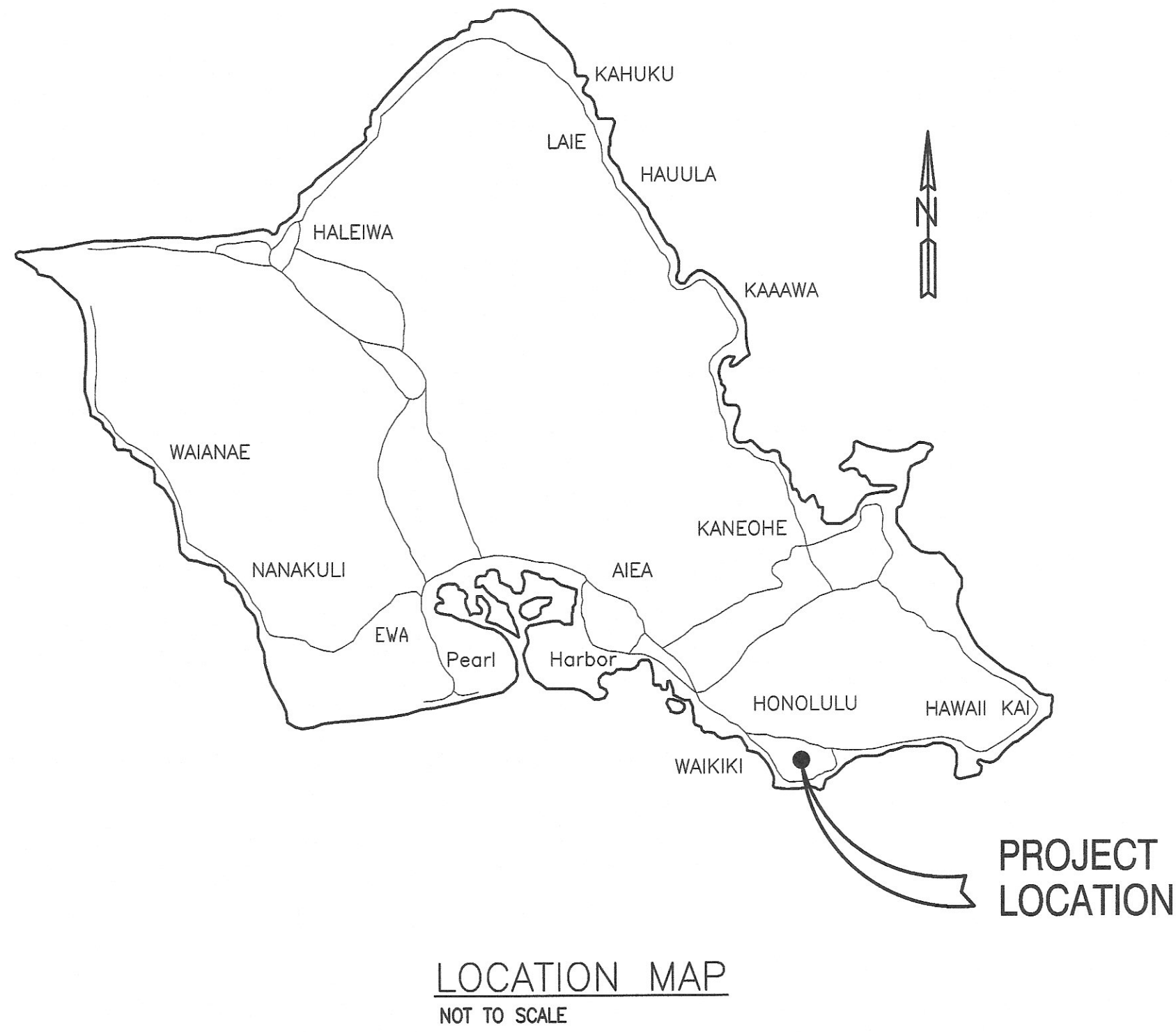


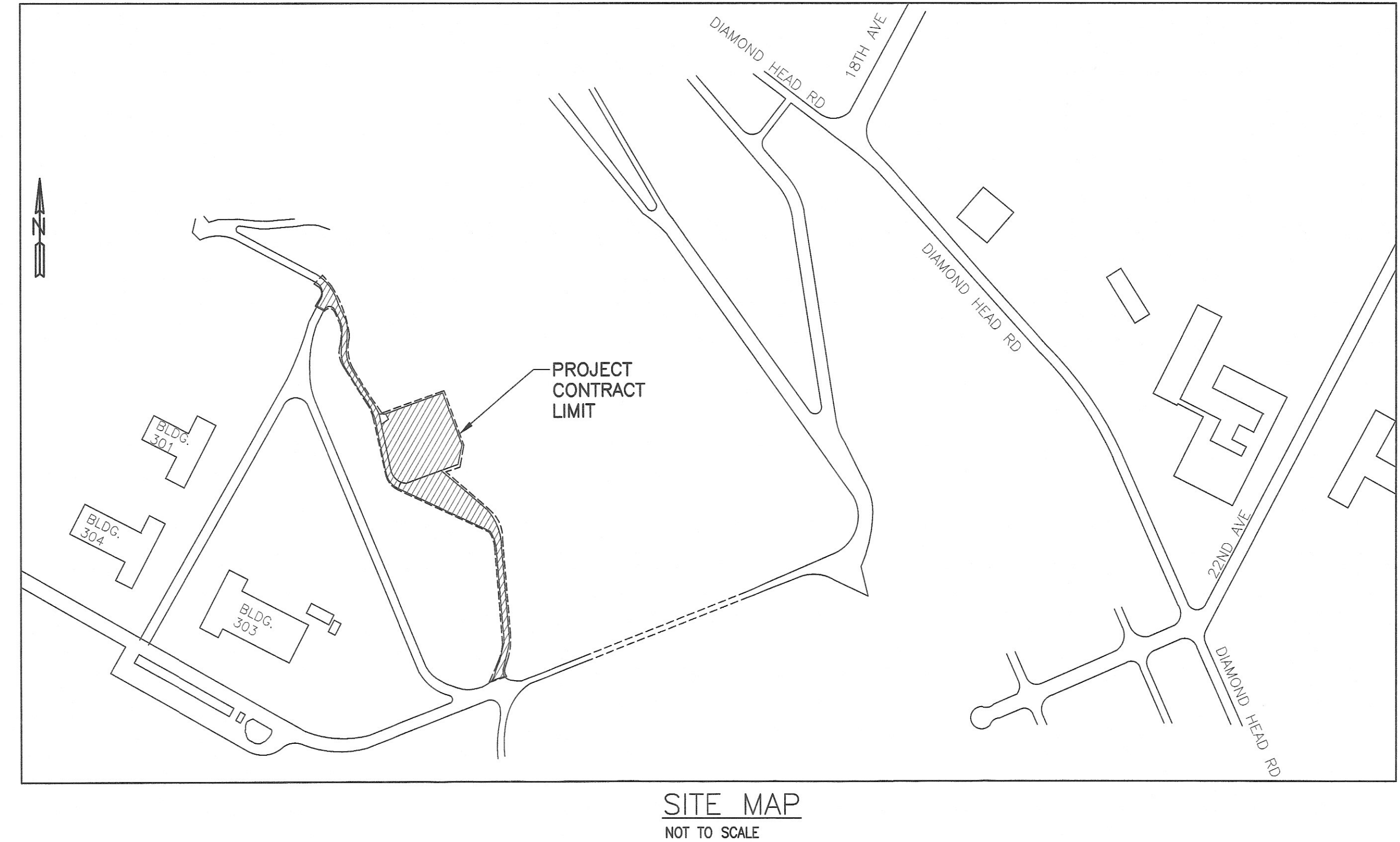
INDEX TO DRAWINGS:

SHEET NO.	DRAWING NO.	DESCRIPTION
1	T-1	TITLE SHEET, INDEX, PLOT PLAN, AND SITE MAP
2	T-2	GENERAL NOTES AND LEGEND
3	C-1	EXISTING TOPOGRAPHY PLAN (STA. 0+00 TO 4+50)
4	C-2	EXISTING TOPOGRAPHY PLAN (STA. 4+50 TO 7+75)
5	C-3	EXISTING TOPOGRAPHY PLAN (STA. 7+75 TO 12+90.98)
6	C-4	DEMOLITION AND PAVEMENT EXCAVATION PLAN
7	C-5	DEMOLITION AND PAVEMENT EXCAVATION PLAN
8	C-6	PAVEMENT AND GRADING PLAN (STA. 0+00 TO 4+50)
9	C-7	PAVEMENT AND GRADING PLAN (STA. 4+50 TO 7+75)
10	C-8	PAVEMENT AND GRADING PLAN (STA. 7+75 TO 12+90.98)
11	C-9	ACCESS ROAD HORIZONTAL CONTROL PLAN AND PROFILE
12	C-10	SIGNING AND STRIPING PLAN (STA. 0+00 TO 6+68)
13	C-11	SIGNING AND STRIPING PLAN (STA. 6+68 TO 12+90.98)
14	C-12	CIVIL DETAILS I
15	C-13	CIVIL DETAILS II
16	C-14	CIVIL DETAILS III
17	C-15	CROSS SECTIONS - DRAINAGE CULVERTS
18	C-16	CROSS SECTIONS - PAVEMENT SECTIONS
19	C-17	LIGHT POLE FOUNDATIONS
20	C-18	CONSTRUCTION PHASING AND STAGING
21	C-19	GUARDRAIL DETAILS AND NOTES
22	EC-1	EROSION CONTROL NOTES
23	EC-2	EROSION CONTROL PLAN
24	EC-3	EROSION CONTROL DETAILS
25	TC-1	TRAFFIC CONTROL PLAN
26	E-1	ELECTRICAL SYMBOLS, LUMINAIRE SCHEDULE PARKING LOT LIGHT POLE DETAILS
27	E-2	ELECTRICAL SITE PLAN DUCT SECTIONS
28	E-3	ELECTRICAL PLAN - BUILDING

NOTES:  
FOR ADDITIVE ALTERNATE INSTRUCTIONS - SEE SPECIFICATION SECTION 01230.  
FOR DESCRIPTIONS OF ADDITIVE ALTERNATE - SEE DRAWING NO. C-7, C-19 AND SPECIFICATION SECTION 16000.



REPAIR AND RESURFACE ACCESS ROAD AND PARKING LOT,  
BIRKHIMER EOC  
JOB No. CA-1325-C  
TAX MAP KEY: 3-1-042:006  
FOR THE  
STATE OF HAWAII, DEPARTMENT OF DEFENSE  
HAWAII EMERGENCY MANAGEMENT AGENCY

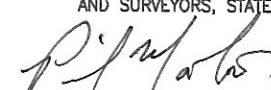


APPROVED:

ADJUTANT GENERAL  
DEPARTMENT OF DEFENSE  
STATE OF HAWAII  
DATE: 16 MAR 18

INTERIM ADMINISTRATOR  
HAWAII EMERGENCY MANAGEMENT AGENCY  
DEPARTMENT OF DEFENSE  
STATE OF HAWAII  
DATE: 5 MARCH 2018

CHIEF ENGINEERING OFFICER  
DEPARTMENT OF DEFENSE, ENGINEERING OFFICE  
STATE OF HAWAII  
DATE: 1 MAR 18

REVISION NO.	SYM.	DESCRIPTION	SHT OF	DATE	APPROVED:
<div><div>PERICLES M. MANTHOS LICENSED PROFESSIONAL ENGINEER No. 7833-C HAWAII, U.S.A.</div><p>License Expiration Date <u>04-30-18</u></p><p>THIS WORK WAS PREPARED BY ME OR UNDER MY SUPERVISION AND CONSTRUCTION OF THIS PROJECT WILL BE UNDER MY OBSERVATION AS SET FORTH IN HAWAII TITLE 16, CHAPTER 115, RULES OF THE BOARD OF PROFESSIONAL ENGINEERS, ARCHITECTS AND SURVEYORS, STATE OF HAWAII</p><div><div>01-23-18 Date</div></div><p>Signature</p></div>			DEPARTMENT OF DEFENSE STATE OF HAWAII		
			REPAIR AND RESURFACE ACCESS ROAD AND PARKING LOT, BIRKHIMER EOC HONOLULU, OAHU, HAWAII		
MANTHOS ENGINEERING, LLC			JOB NO.	DRAWING NO.	
DESIGNED BY: KM		CHECKED BY: MO		CA-1325-C	
DRAWN BY: KM		APPROVED BY: PM		DATE	SHEET 1
SCALE:				JAN, 2018	OF 28 SHEETS