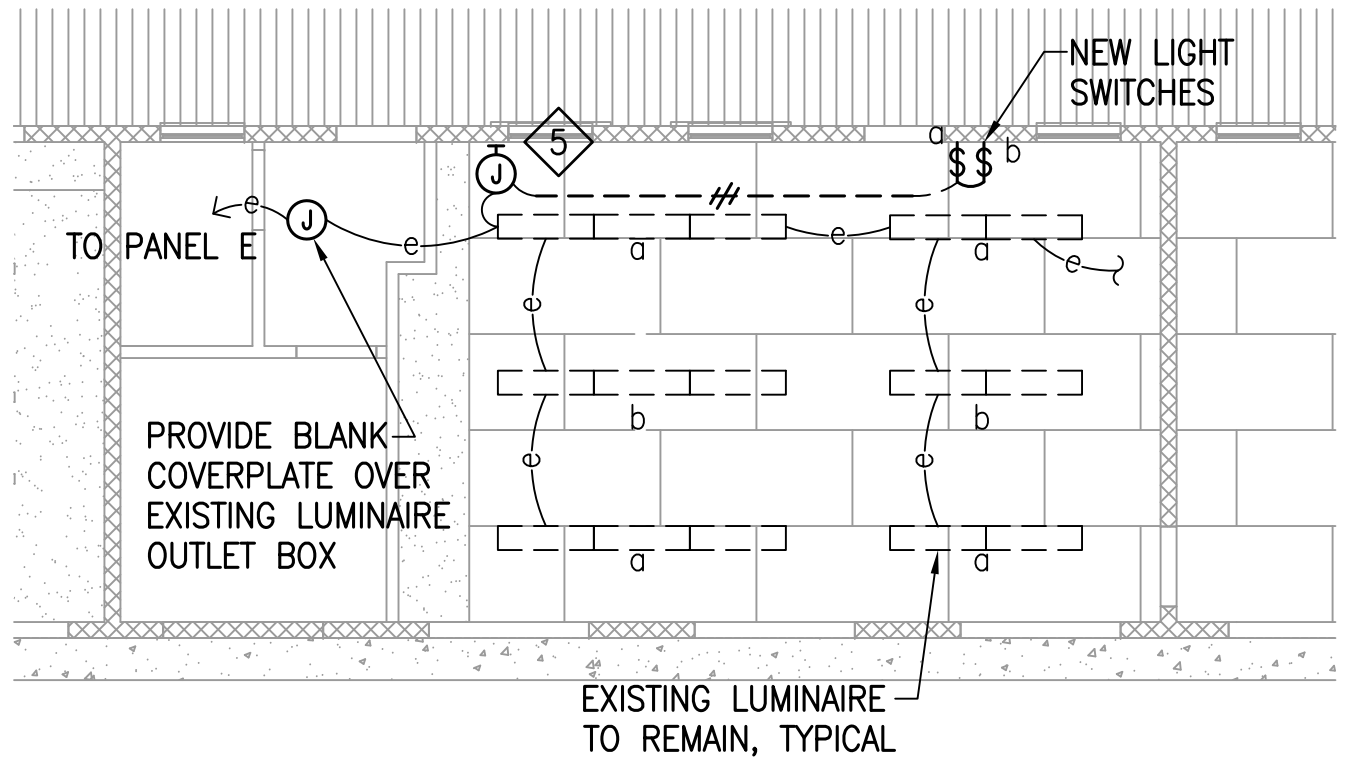
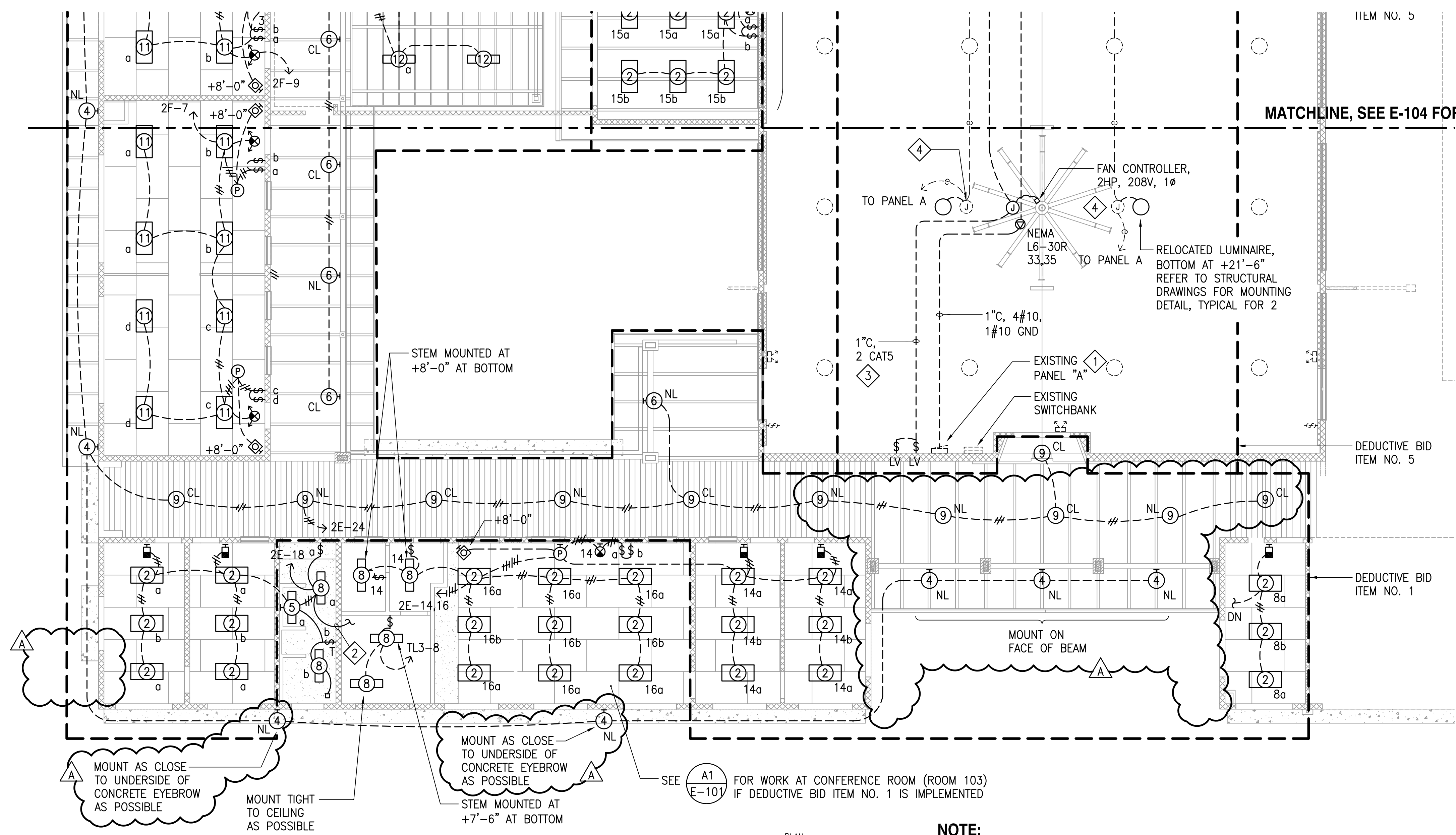


8/26/16-15:34 Y:\014\014.126\PHASE 2 - 2015\014.126 E-103_E-104.L01.dwg

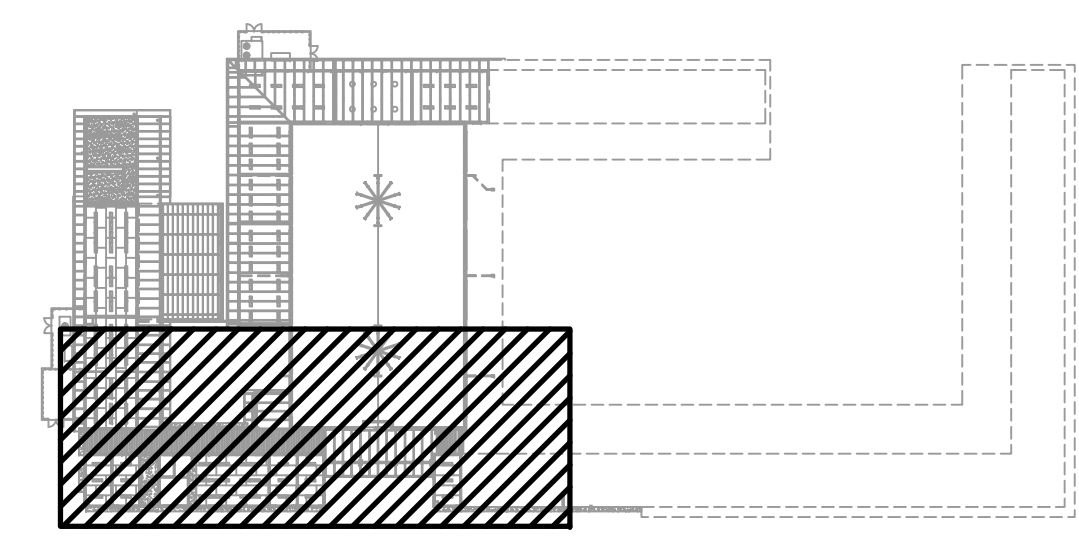


CONFERENCE (ROOM 103) LIGHTING PLAN - DEDUCTIVE BID ITEM NO. 1
SCALE: 1/8" = 1'-0"

PARTIAL LIGHTING PLAN - 1
SCALE: 1/8" = 1'-0"



- NOTE:**
- 1 REMOVE EXISTING 1P20A BREAKERS IN PANEL A CIRCUITS 33, 34, 35, 36 AND INSTALL (2) 2P30A BREAKERS FOR CEILING FANS. PROVIDE UPDATED, TYPEWRITTEN PANEL DIRECTORY. PANEL "A" IS A CUTLER HAMMER TYPE PRL1.
 - 2 DOWN TO EXHAUST FAN RELAY, SEE E-101 FOR CONTINUATION.
 - 3 CONFIRM CONTROL CABLING WITH FAN MANUFACTURER.
 - 4 EXISTING OUTLET BOX, EXTEND CONDUIT AND WIRING TO RELOCATED LUMINAIRE.
 - 5 PROVIDE OUTLET BOX OVER EXISTING LIGHT SWITCHES AND EXTEND CONDUIT AND WIRING TO NEW SWITCH LOCATION.



KEY PLAN
NOT TO SCALE



MATCHLINE, SEE E-104 FOR CONTINUATION

ITEM NO. 5

DEDUCTIVE BID ITEM NO. 5

DEDUCTIVE BID ITEM NO. 1



ARCHITECTS-HAWAII LIMITED
733 BISHOP STREET, SUITE 3100
HONOLULU, HAWAII 96813
TELEPHONE: (808) 523-9636
FAX: (808) 523-3280
www.ahdesign.com

MICHELE N. ADDLHO
LICENSED PROFESSIONAL ENGINEER
No. 10017-E
HAWAII, U.S.A.

THIS WORK WAS PREPARED BY ME OR UNDER MY SUPERVISION
DATE: 4/30/2018
SIGNATURE: _____ EXPIRATION DATE: _____

DATE	DESCRIPTION	BY	CHK
8/29/16	ADDENDUM NO. 1		

FINAL SUBMITTAL

SUBMITTAL DATE: 30 JUNE 2016

DES	GK	DRW	MC	CHK	GK

DEPARTMENT OF DEFENSE
HILO, HAWAII

YOUTH CHALLENGE ACADEMY (YCA)
BUILDING 621 RENOVATION - PHASE 2

PARTIAL LIGHTING PLAN - 1

STATE OF HAWAII
HAWAII ARMY NATIONAL GUARD
KEAUKAHA MILITARY RESERVATION

SCALE: AS NOTED

STATE JOB NO. CA-1212-C2

FEDERAL PROJECT NO.

SHEET 111 OF 131

E-103