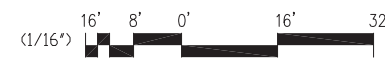


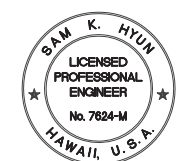
1 BLDG 19 - AIR CONDITIONING AND VENTILATION PLAN
 M-2.1 SCALE : 1/16" = 1'-0"



GRAPHIC SCALE



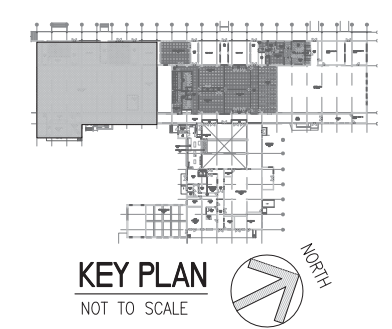
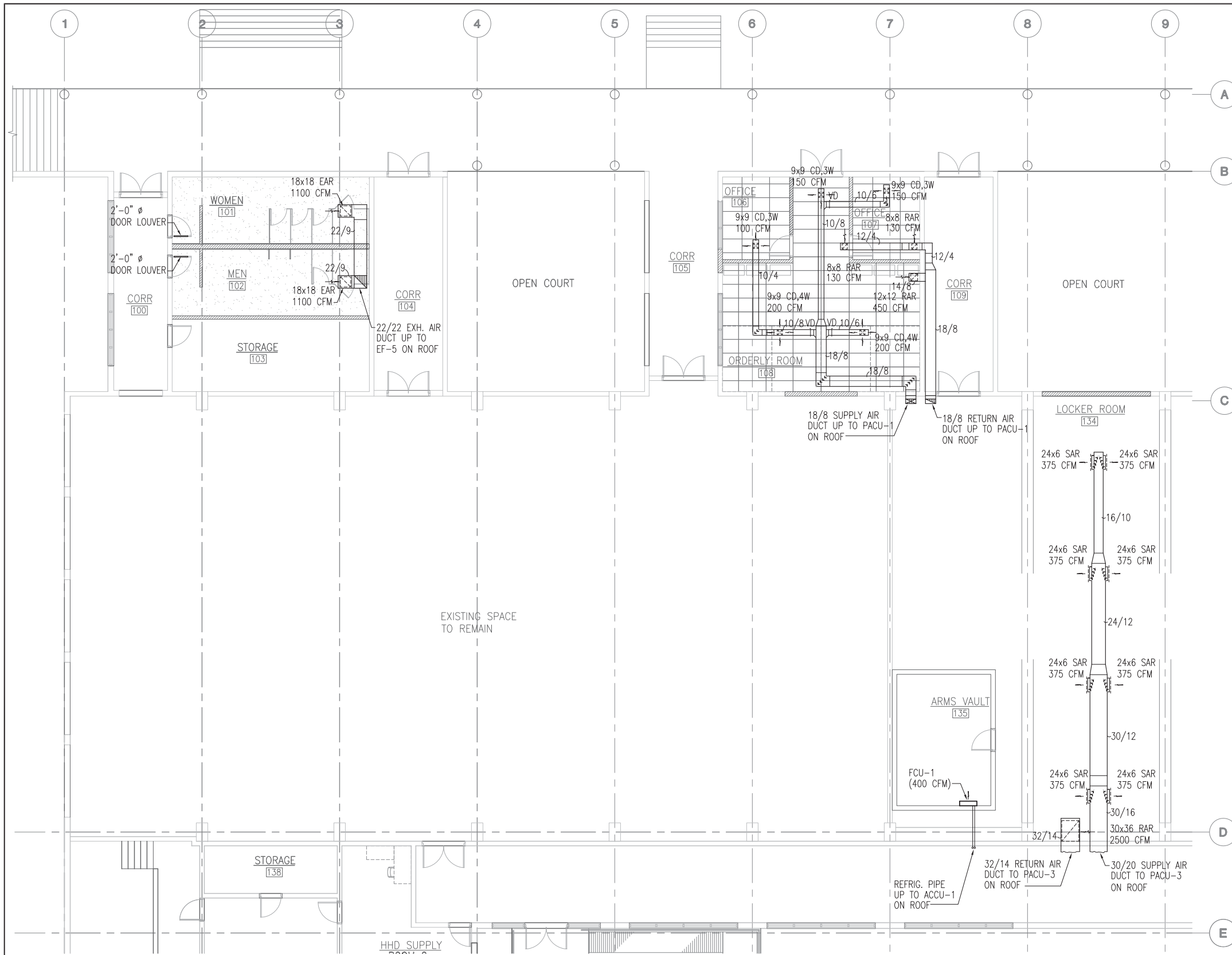
REVISION NO.	SYM.	DESCRIPTION	SHT. OF	DATE
		HAWAII ARMY NATIONAL GUARD DEPARTMENT OF DEFENSE STATE OF HAWAII		
		KALAELOA BLDG 19 RENOVATION		
		AIR CONDITIONING AND VENTILATION PLAN		
		PROJECT NO. HIARNG CA 2828	SHEET M-21	
		DATE 6-07-10	81	
		DESIGNED BY: MM	CHECKED BY: MM	
		DRAWN BY: JA	APPROVED BY: SH	



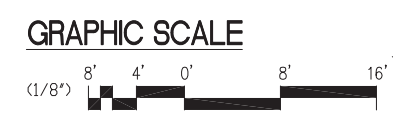
This work was prepared by me or under my supervision and construction of this project will be under my observation. (Observation of construction as defined in Chapter 16-115, Subchapter 1 Definitions of the Hawaii Administrative Rules, "Professional Engineers, Architects, Surveyors, and Landscape Architects.")

MICE INTERNATIONAL, INC. 4/30/2012
 EXP. DATE

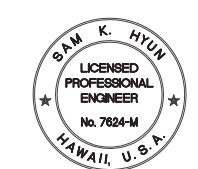
NOTE: Contractor to check and verify dimensions of job before proceeding with work.



1 BLDG 19 - PARTIAL AIR CONDITIONING AND VENTILATION PLAN
 M-2.2 SCALE : 1/8" = 1'-0"

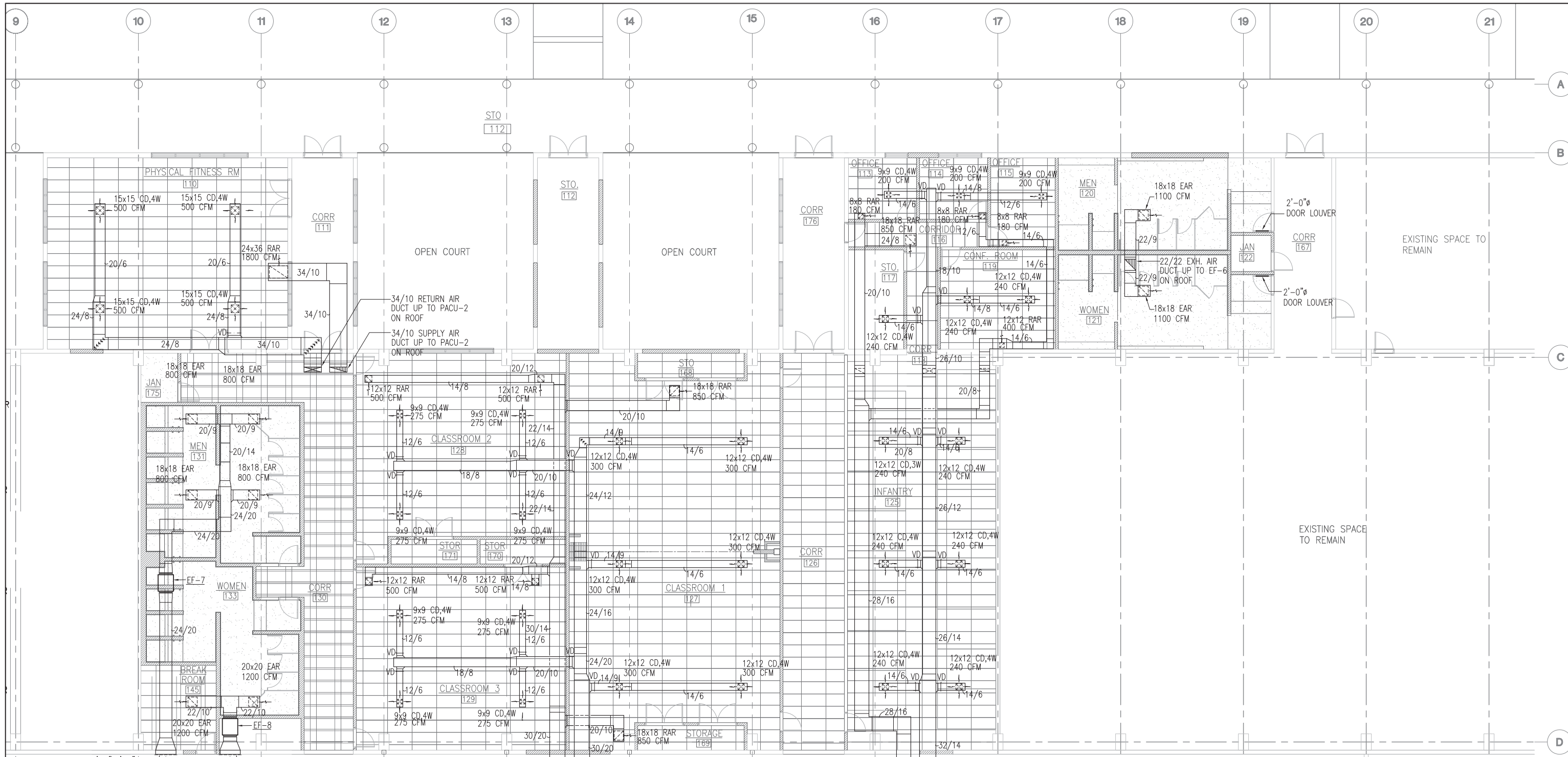


REVISION NO.	SYM.	DESCRIPTION	SHT. OF	DATE
		HAWAII ARMY NATIONAL GUARD DEPARTMENT OF DEFENSE STATE OF HAWAII		
		KALAELOA BLDG 19 RENOVATION		
		PARTIAL AIR CONDITIONING AND VENTILATION PLAN		
		PROJECT NO. HIARNG CA 2828	SHEET	
		DATE 6-07-10	M-22	82
		DESIGNED BY: MM	CHECKED BY: MM	OF 117 SHEETS
		DRAWN BY: JA	APPROVED BY: SH	

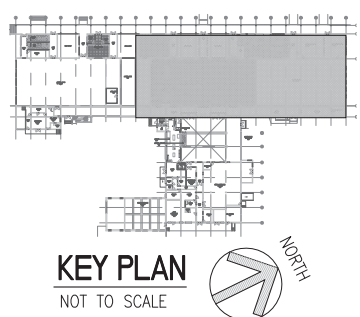
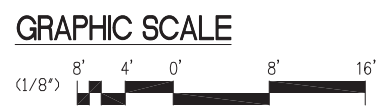


This work was prepared by me or under my supervision and construction of this project will be under my observation. (Observation of construction as defined in Chapter 16-115, Subchapter 1 Definitions of the Hawaii Administrative Rules, "Professional Engineers, Architects, Surveyors, and Landscape Architects.")

4/30/2012
 MICE INTERNATIONAL, INC. EXP. DATE
 NOTE: Contractor to check and verify dimensions of job before proceeding with work.



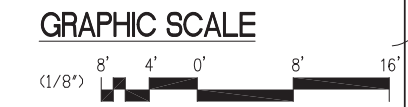
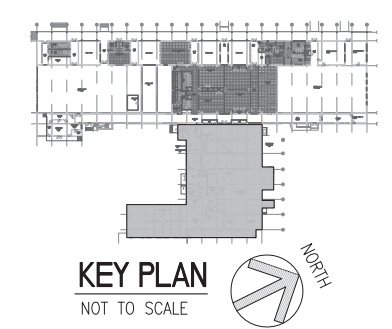
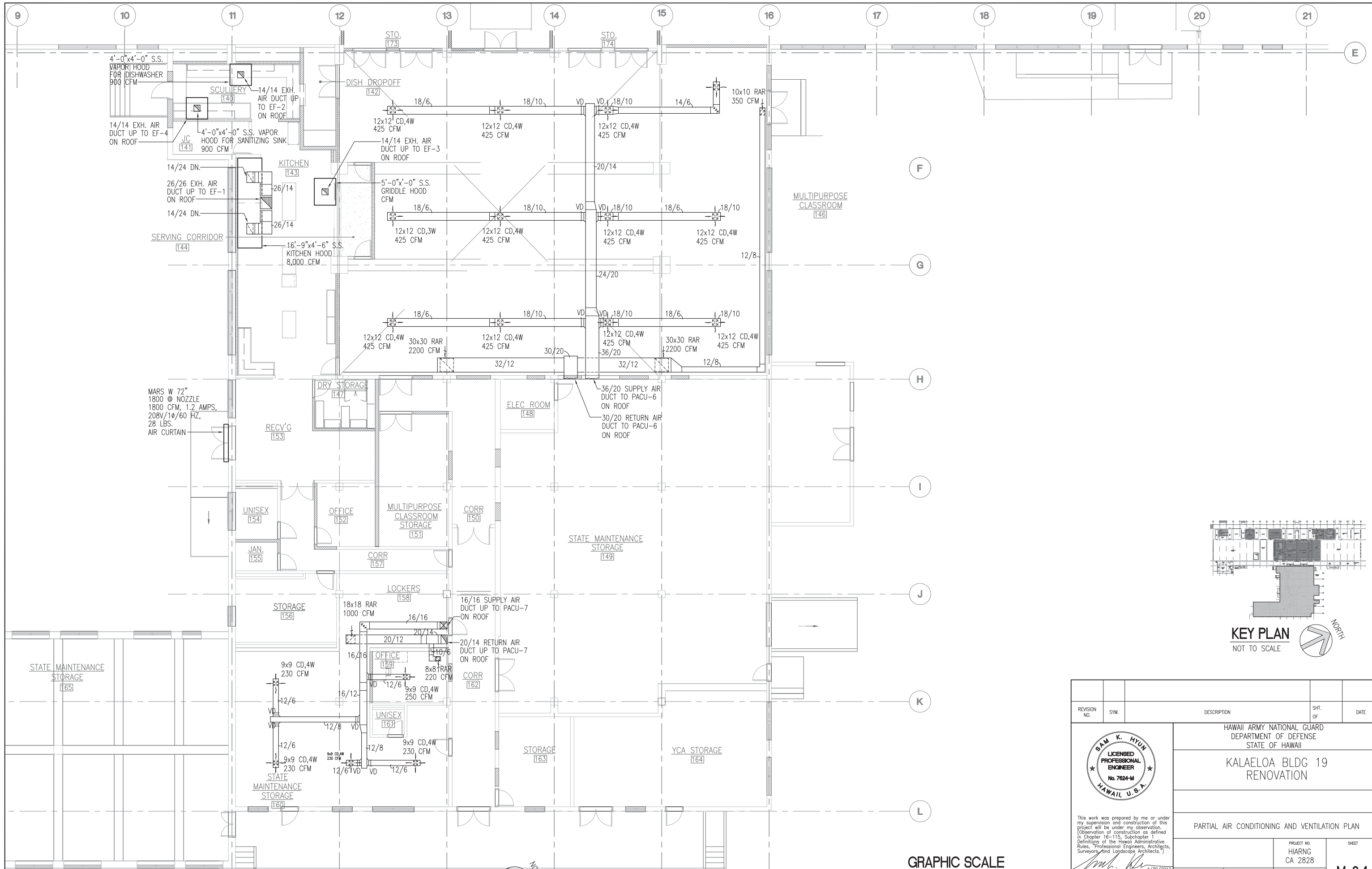
1 BLDG 19 - PARTIAL AIR CONDITIONING AND VENTILATION PLAN
 M-2.3 SCALE : 1/8" = 1'-0"



REVISION NO.	SYM.	DESCRIPTION	SHT. OF	DATE
HAWAII ARMY NATIONAL GUARD DEPARTMENT OF DEFENSE STATE OF HAWAII KALAELOA BLDG 19 RENOVATION				
PARTIAL AIR CONDITIONING AND VENTILATION PLAN				
DESIGNED BY:	MM	CHECKED BY:	MM	PROJECT NO. CA 2828
DRAWN BY:	JA	APPROVED BY:	SH	DATE 6-07-10
SHEET M-23 83 OF 117 SHEETS				4/30/2012 EXP. DATE MICE INTERNATIONAL, INC.

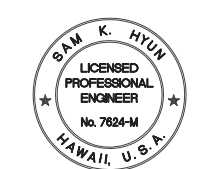
This work was prepared by me or under my supervision and construction of this project will be under my observation. (Observation of construction as defined in Chapter 16-115, Subchapter 1 Definitions of the Hawaii Administrative Rules, Professional Engineers, Architects, Surveyors, and Landscape Architects.)

NOTE: Contractor to check and verify dimensions of job before proceeding with work.

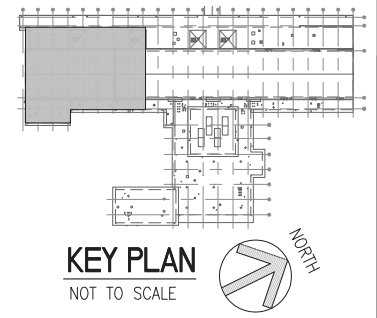
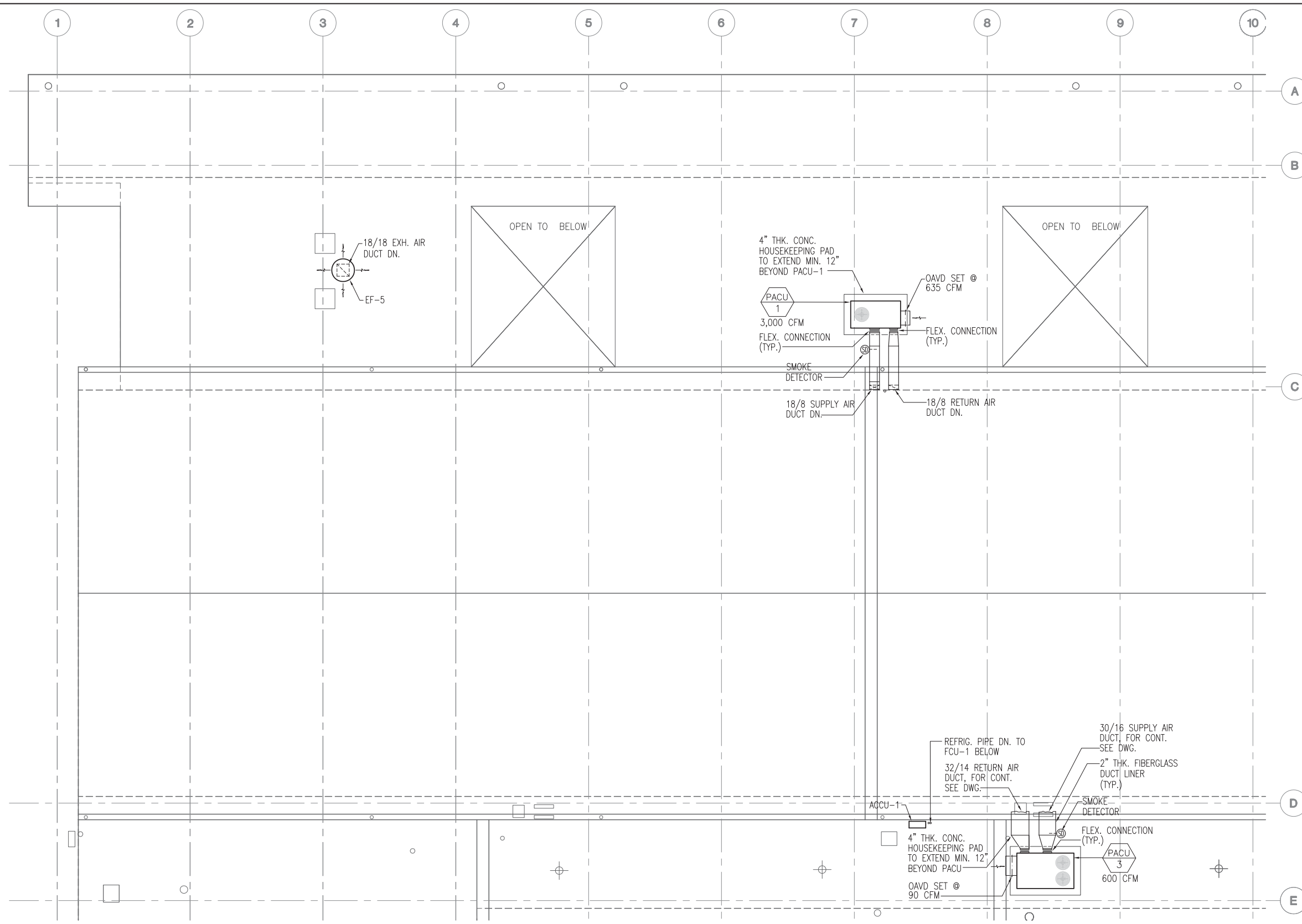


1 BLDG 19 - PARTIAL AIR CONDITIONING AND VENTILATION PLAN
 M-2.4 SCALE : 1/8" = 1'-0"

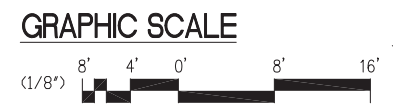
REVISION NO.	SYM.	DESCRIPTION	SHT. OF	DATE
		HAWAII ARMY NATIONAL GUARD DEPARTMENT OF DEFENSE STATE OF HAWAII		
		KALAELOA BLDG 19 RENOVATION		
		PARTIAL AIR CONDITIONING AND VENTILATION PLAN		
		PROJECT NO. HIARNG CA 2828	SHEET M-24	
		DESIGNED BY: MM	CHECKED BY: MM	DATE 6-07-10
		DRAWN BY: JA	APPROVED BY: SH	OF 117 SHEETS



This work was prepared by me or under my supervision and construction of this project will be under my observation. (Observation of construction as defined in Chapter 16-115, Subchapter 1 Definitions of the Hawaii Administrative Rules, Professional Engineers, Architects, Surveyors, and Landscape Architects.)
 MICE INTERNATIONAL, INC. 4/30/2012
 EXP. DATE
 NOTE: Contractor to check and verify dimensions of job before proceeding with work.



1 BLDG 19 - PARTIAL AIR CONDITIONING AND VENTILATION ROOF PLAN
 M-2.5 SCALE : 1/8" = 1'-0"



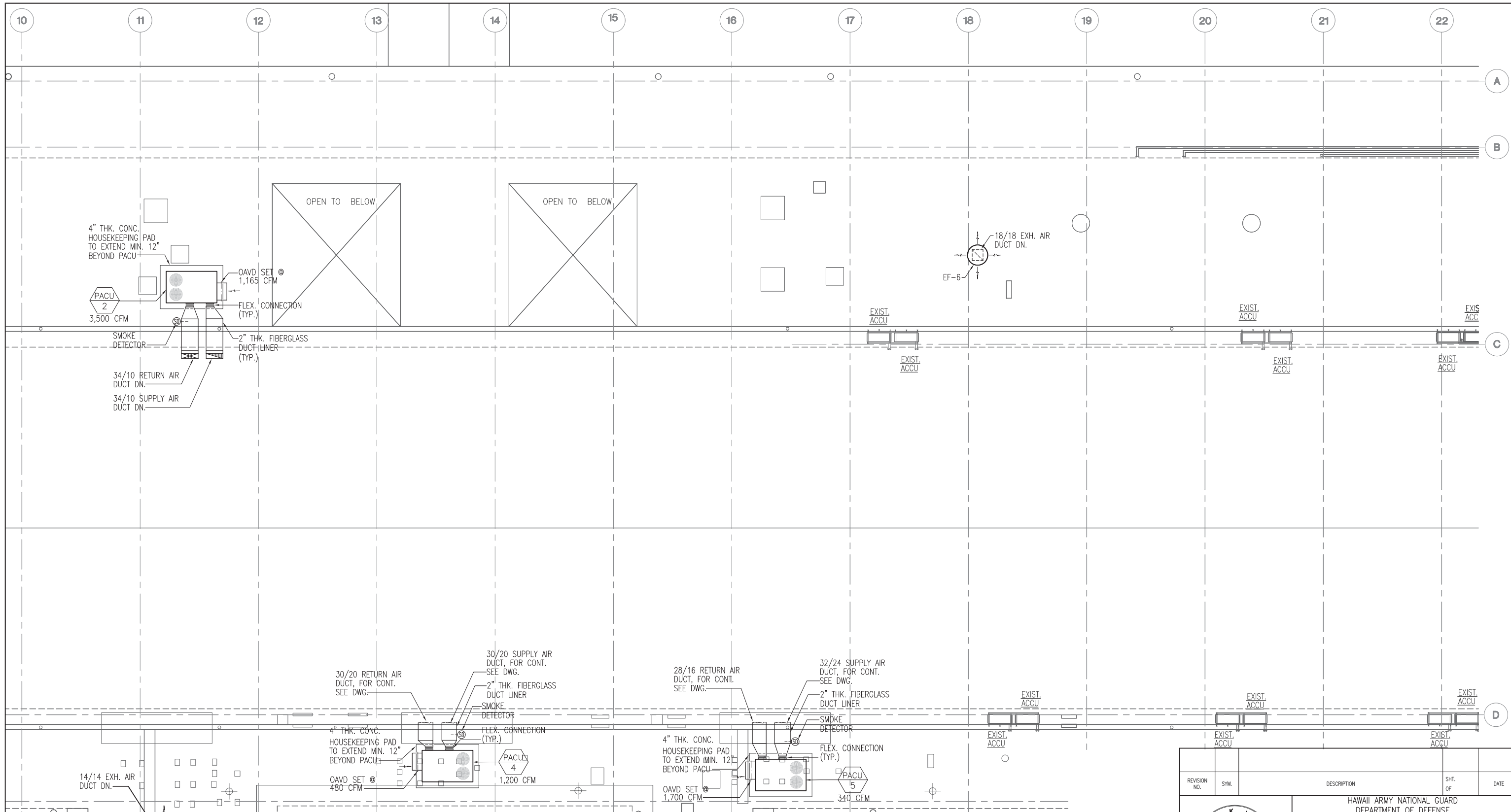
REVISION NO.	SYM.	DESCRIPTION	SHT. OF	DATE
		HAWAII ARMY NATIONAL GUARD DEPARTMENT OF DEFENSE STATE OF HAWAII		
		KALAELOA BLDG 19 RENOVATION		
		PARTIAL AIR CONDITIONING AND VENTILATION ROOF PLAN		
		PROJECT NO. HIARNG CA 2828	SHEET M-2.5	
		DESIGNED BY: MM	CHECKED BY: MM	DATE 6-07-10
		DRAWN BY: JA	APPROVED BY: SH	85 OF 117 SHEETS



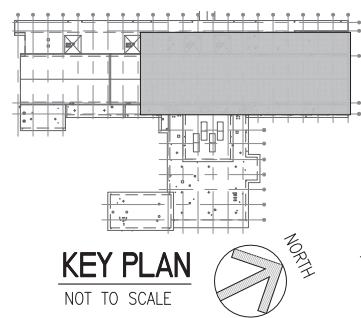
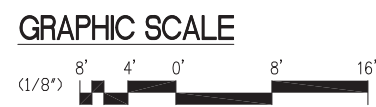
This work was prepared by me or under my supervision and construction of this project will be under my observation. (Observation of construction as defined in Chapter 16-115, Subchapter 1 Definitions of the Hawaii Administrative Rules, Professional Engineers, Architects, Surveyors, and Landscape Architects.)

MCE INTERNATIONAL, INC.
 4/30/2012
 EXP. DATE

NOTE: Contractor to check and verify dimensions of job before proceeding with work.



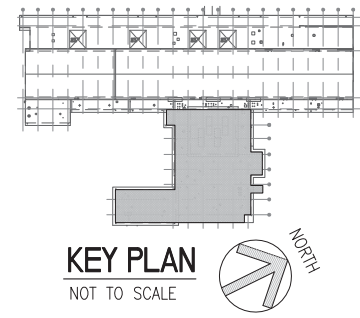
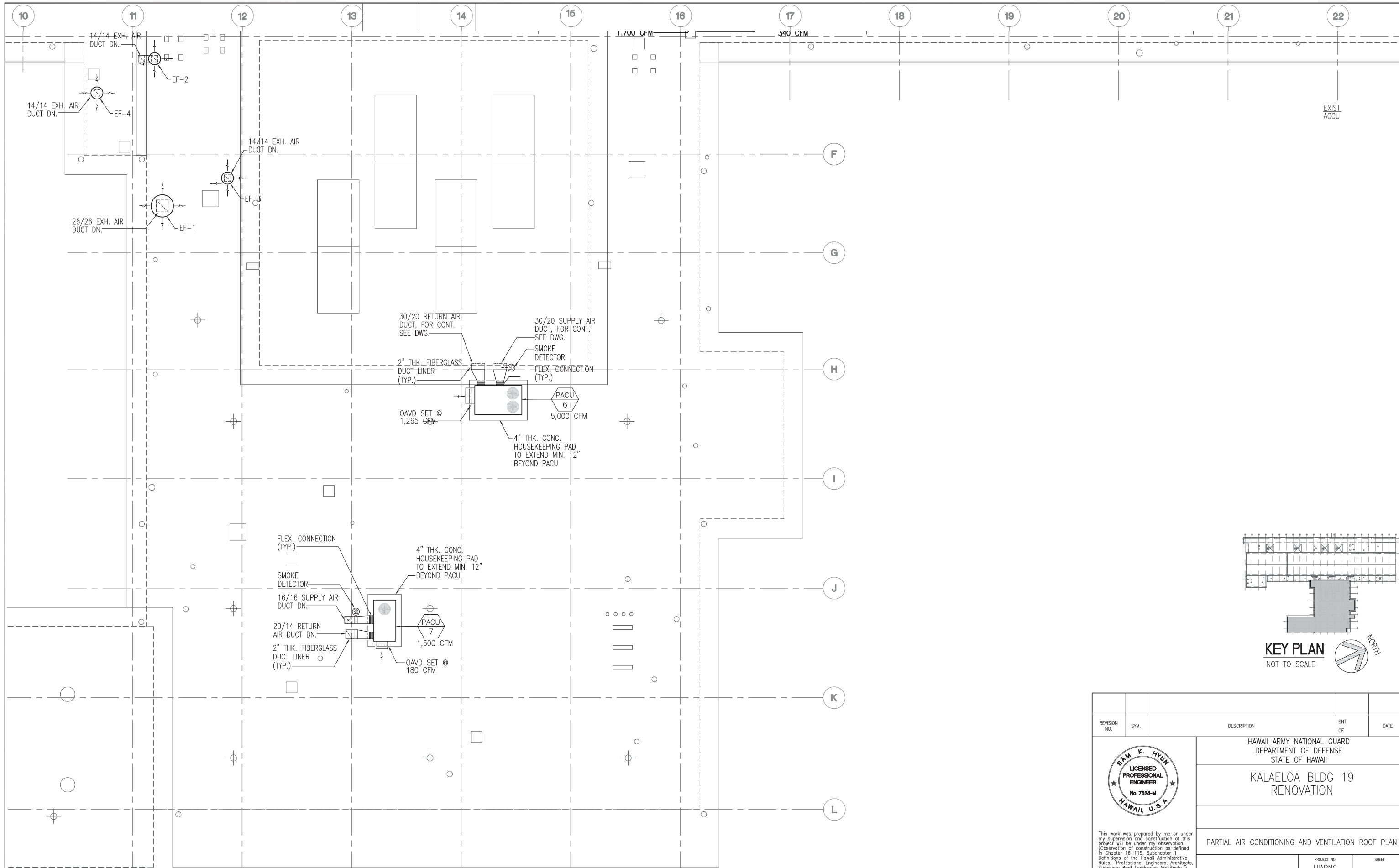
1 BLDG 19 - PARTIAL AIR CONDITIONING AND VENTILATION ROOF PLAN
 M-2.6 SCALE : 1/8" = 1'-0"



REVISION NO.	SYM.	DESCRIPTION	SHT. OF	DATE

		HAWAII ARMY NATIONAL GUARD DEPARTMENT OF DEFENSE STATE OF HAWAII	
		KALAELOA BLDG 19 RENOVATION	
PARTIAL AIR CONDITIONING AND VENTILATION ROOF PLAN			
DESIGNED BY: MM	CHECKED BY: MM	PROJECT NO. HIARNG CA 2828	SHEET M-26
DRAWN BY: JA	APPROVED BY: SH	DATE 6-07-10	86 OF 117 SHEETS

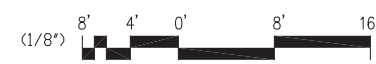
This work was prepared by me or under my supervision and construction of this project will be under my observation. (Observation of construction as defined in Chapter 16-115, Subchapter 1 Definitions of the Hawaii Administrative Rules, Professional Engineers, Architects, Surveyors, and Landscape Architects.)
 MCE INTERNATIONAL, INC. 4/30/2012
 EXP. DATE
 NOTE: Contractor to check and verify dimensions of job before proceeding with work.



1 BLDG 19 - PARTIAL AIR CONDITIONING AND VENTILATION ROOF PLAN
 M-2.7 SCALE : 1/8" = 1'-0"

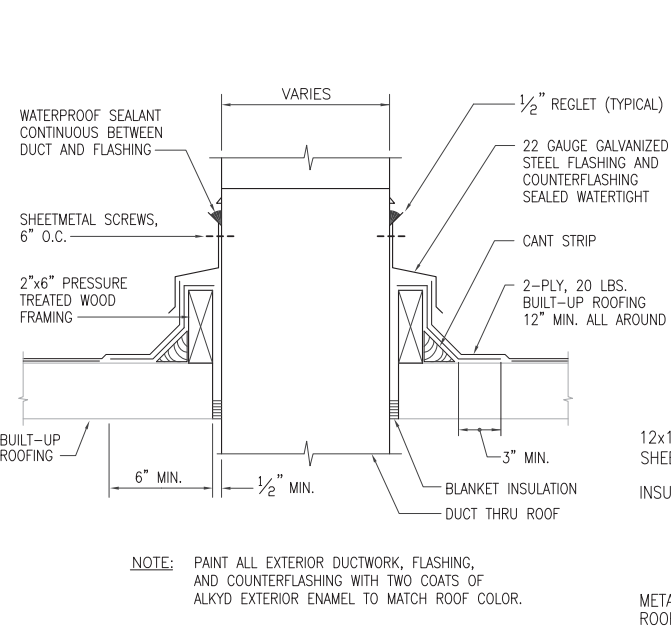


GRAPHIC SCALE

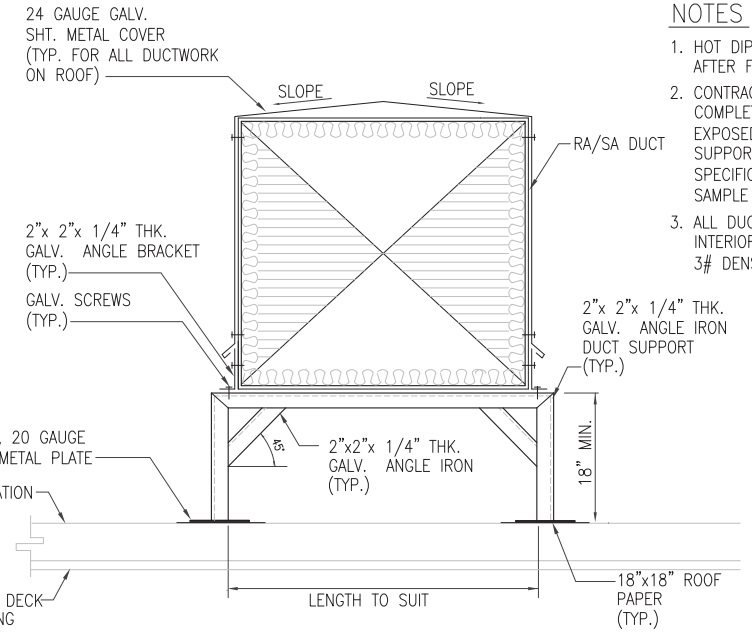


REVISION NO.	SYM.	DESCRIPTION	SHT. OF	DATE
HAWAII ARMY NATIONAL GUARD DEPARTMENT OF DEFENSE STATE OF HAWAII KALAELOA BLDG 19 RENOVATION				
PARTIAL AIR CONDITIONING AND VENTILATION ROOF PLAN				
		PROJECT NO.	SHEET	
		HIARNG CA 2828	M-2.7	
DESIGNED BY:	CHECKED BY:	DATE	87	
MM	MM	6-07-10	OF 117 SHEETS	
DRAWN BY:	APPROVED BY:			
JA	SH			

This work was prepared by me or under my supervision and construction of this project will be under my observation. (Observation of construction as defined in Chapter 16-115, Subchapter 1 Definitions of the Hawaii Administrative Rules, Professional Engineers, Architects, Surveyors, and Landscape Architects.)
 MICE INTERNATIONAL, INC. 4/30/2012
 EXP. DATE
 NOTE: Contractor to check and verify dimensions of job before proceeding with work.



1 DUCT THRU ROOF DETAIL
M-3.1 NOT TO SCALE

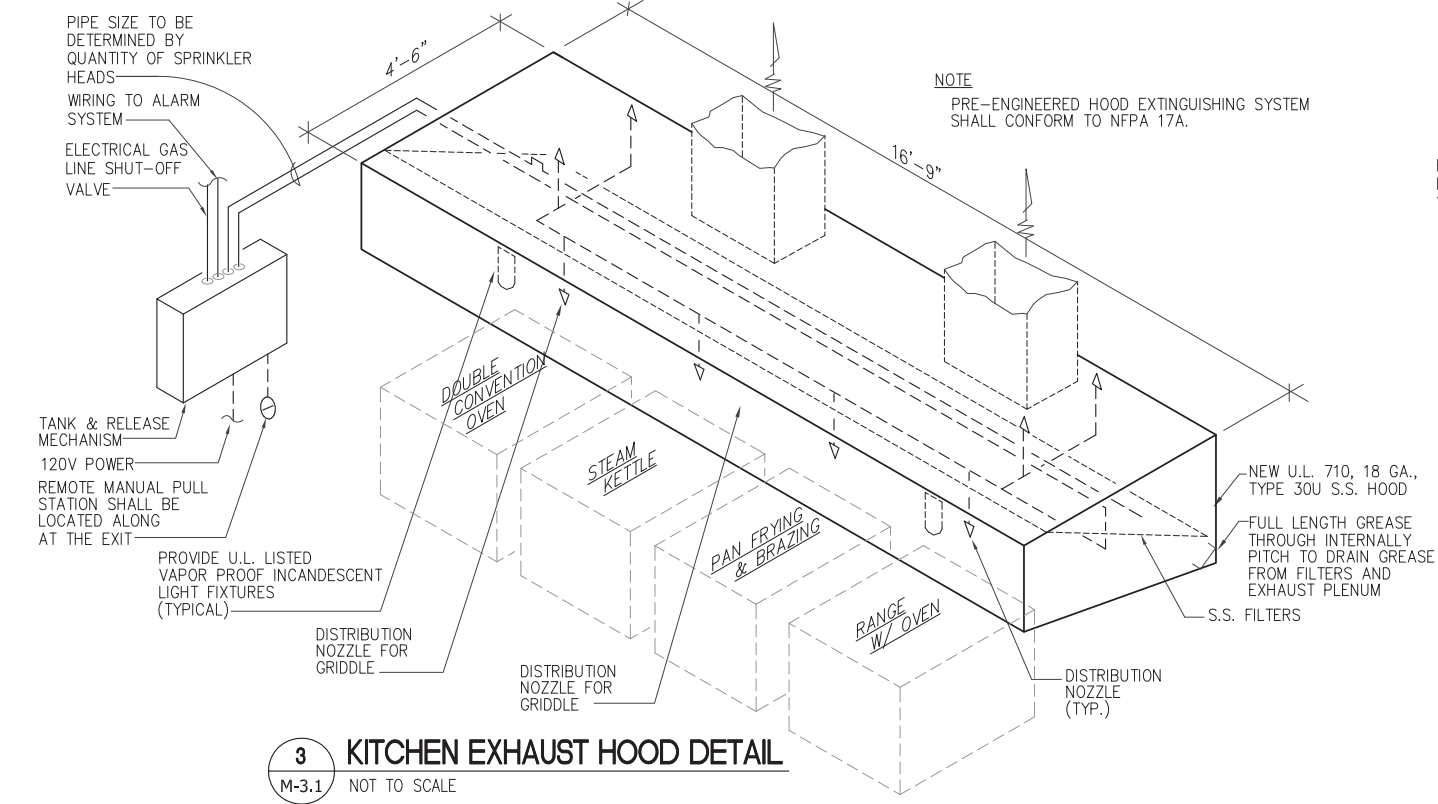


2 DUCT SUPPORT DETAIL
M-3.1 NOT TO SCALE

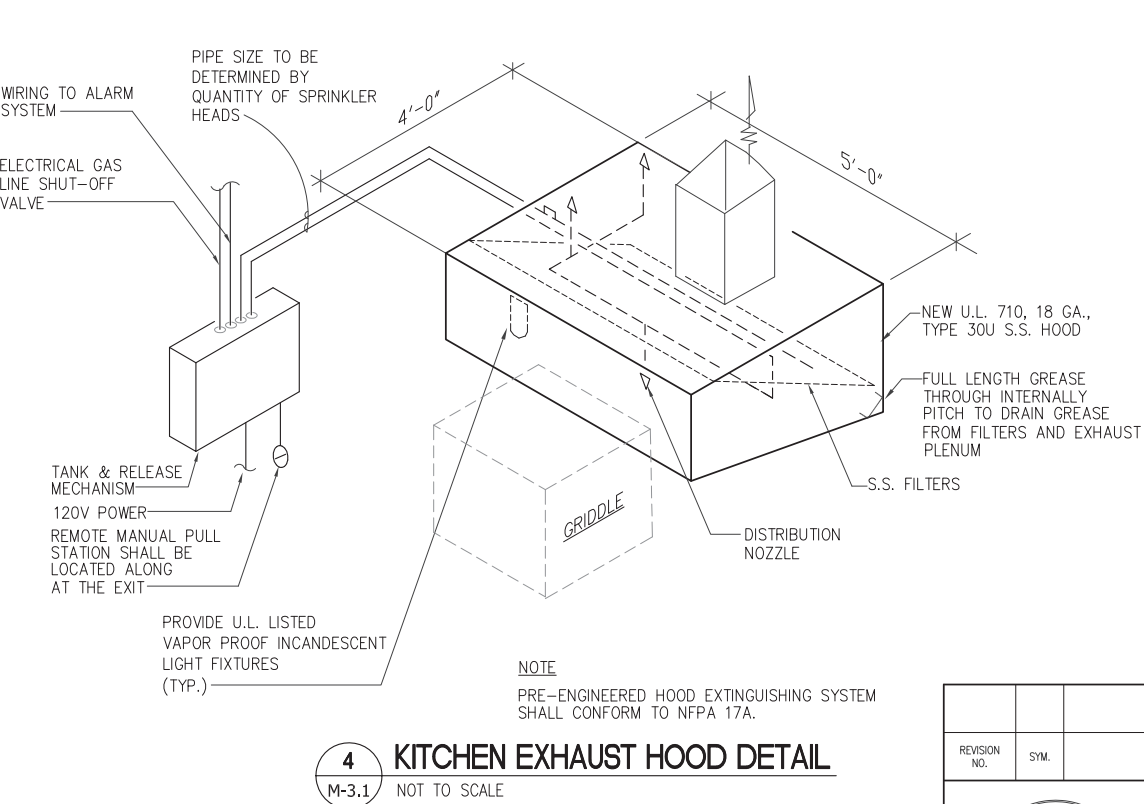
- NOTES**
- HOT DIPPED GALVANIZE ALL SUPPORT AFTER FABRICATION.
 - CONTRACTOR SHALL PROVIDE COMPLETE PAINTING OF ALL NEW EXPOSED DUCTWORK, DUCT SUPPORTS IN ACCORDANCE WITH SPECIFICATIONS. SUBMIT COLOR SAMPLE FOR APPROVAL.
 - ALL DUCTWORK INDICATED TO HAVE INTERIOR LINES, 1" THICK MINIMUM, 3# DENSITY.

NOTES FOR RANGE HOOD AND EXHAUST SYSTEM

- PROTECTION OF COMMERCIAL COOKING OPERATIONS SHALL BE ACCORDANCE WITH 1997 UNIFORM FIRE CODE ARTICLE 10 SECTION 1006.
- AUTOMATIC FIRE EXTINGUISHING SYSTEMS SHALL BE INTERCONNECTED TO THE FUEL OR CURRENT SUPPLY FOR COOKING EQUIPMENT. THE INTERCONNECTION SHALL BE ARRANGED TO AUTOMATICALLY SHUT-OFF ALL COOKING EQUIPMENT AND ELECTRICAL RECEPTACLES WHICH ARE LOCATED UNDER THE HOOD WHEN THE SYSTEM IS ACTIVATED. SHUT OFF VALVES OR SWITCHES SHALL BE OF THE TYPES THAT REQUIRE MANUAL OPERATION TO RESET, UFC 1997, SECTION 1006.2.4.1.
- ALL DEEP FAT FRYER SHALL BE INSTALLED WITH AT LEAST A 16" (406.4 MM) SPACE BETWEEN THE FRYER AND THE SURFACE FLAMES FROM ADJACENT COOKING EQUIPMENT. UFC 1997, SECTION 1006.2.2.1 AS AMENDED.
- DUCTS EXPOSED TO THE OUTSIDE ATMOSPHERE OR SUBJECT TO A CORROSIVE ENVIRONMENT SHALL BE PROTECTED AGAINST CORROSION, UMC 1997, SECTION 508.1.3.
- GREASE DUCT SYSTEMS SHALL NOT HAVE OPENINGS THEREIN OTHER THAN THOSE REQUIRED FOR PROPER OPERATION AND MAINTENANCE OF THE SYSTEM. ANY PORTION OF SUCH SYSTEM HAVING SECTIONS INACCESSIBLE FROM THE DUCT ENTRY OR DISCHARGE SHALL BE PROVIDED WITH ADEQUATE CLEANOUT OPENINGS. UMC 1997, SECTION 508.5.
- FIRE RESISTIVE ACCESS OPENING: WHEN CLEANOUT OPENINGS ARE LOCATED IN DUCTS WITHIN A FIRE RESISTIVE SHAFT OR ENCLOSURE, ACCESS OPENINGS SHALL BE PROVIDED IN THE SHAFT OR ENCLOSURE AT EACH CLEANOUT POINT. THESE ACCESS OPENINGS SHALL BE EQUIPPED WITH TIGHT FITTING SLIDING OR HINGED DOORS WHICH ARE EQUAL IN FIRE RESISTIVE PROTECTION TO THAT OF THE SHAFT ENCLOSURE. UMC 1997, SECTION 508.5.
- CLEARANCES: EXPOSED GREASE DUCT SYSTEMS SERVING A TYPE I HOOD SHALL HAVE A CLEARANCE FROM UNPROTECTED COMBUSTIBLE CONSTRUCTION OF AT LEAST 18 INCHES. THIS CLEARANCE MAY BE REDUCED TO NOT LESS THAN 3 INCHES, PROVIDED THE COMBUSTIBLE CONSTRUCTION IS PROTECTED WITH MATERIAL REQUIRED FOR ONE-HOUR FIRE-RESISTIVE CONSTRUCTION. UMC 1997, SECTION 508.8.
- EXHAUST OUTLETS: EXHAUST OUTLETS FOR GREASE DUCTS SERVING COMMERCIAL FOOD HEAT PROCESSING EQUIPMENT SHALL EXTEND THROUGH THE ROOF UNLESS OTHERWISE APPROVED BY THE ADMINISTRATIVE AUTHORITY. SUCH EXTENSION SHALL BE AT LEAST 2 FEET ABOVE THE ROOF SURFACE, AT LEAST 10 FEET FROM PARTS OF THE SAME OR CONTIGUOUS BUILDINGS, ADJACENT PROPERTY LINE OR AIR INTAKE OPENING INTO ANY BUILDING, AND SHALL BE LOCATED AT LEAST 10 FEET ABOVE THE ADJOINING GRADE LEVEL. EXCEPTION 1) EXHAUST OUTLETS FOR GREASE DUCTS SERVING COMMERCIAL FOOD HEAT PROCESSING EQUIPMENT MAY TERMINATE NOT LESS THAN 5 FEET FROM AN ADJACENT BUILDING PROPERTY LINE OR AIR INTAKE OPENING INTO A BUILDING IF THE AIR FROM THE EXHAUST OUTLET IS DISCHARGED AWAY FROM SUCH LOCATIONS. EXCEPTION 2) UPON APPROVAL OF THE BUILDING OFFICIAL, THE EXHAUST FROM ANY HOOD SERVING COMMERCIAL FOOD HEAT PROCESSING EQUIPMENT MAY TERMINATE IN A PROPERLY ENGINEERED AIR RECOVERY SYSTEM FOR RECIRCULATION TO THE ROOM IN WHICH THE HOOD IS LOCATED. UMC 1997, SECTION 508.9.
- FOR CANOPY TYPE COMMERCIAL COOKING HOODS, THE INSIDE EDGE THEREOF SHALL OVERHANG OR EXTEND A HORIZONTAL DISTANCE OF NOT LESS THAN 6 INCHES BEYOND THE EDGE OF THE COOKING SURFACE ON ALL OPEN SIDES, AND THE VERTICAL DISTANCE BETWEEN THE LIP OF THE HOOD AND THE COOKING SURFACE SHALL NOT EXCEED 4 FEET. LISTED EXHAUST HOODS ARE TO BE INSTALLED IN ACCORDANCE WITH THE TERMS OF THEIR LISTING AND MANUFACTURER'S INSTALLATION INSTRUCTIONS. UMC 1997, SECTION 509.6.
- REGARDING SOLID FUEL COOKING: PER THE 1997 UNIFORM MECHANICAL CODE SECTION 508.7.1 TYPE I HOODS FOR USE OVER SOLID-FUEL COOKING EQUIPMENT SHALL BE PROVIDED WITH SEPARATE EXHAUST SYSTEMS. UNDEFINED COOKING EQUIPMENT OTHER THAN SOLID-FUEL COOKING EQUIPMENT MAY BE INSTALLED UNDER A COMMON HOOD. THE MINIMUM AIRFLOW FOR SOLID-FUEL COOKING EQUIPMENT, GREASE-BURNING CHAR BROILERS, AND UNDEFINED EQUIPMENT SHALL BE (PER THE TABLE).



3 KITCHEN EXHAUST HOOD DETAIL
M-3.1 NOT TO SCALE



4 KITCHEN EXHAUST HOOD DETAIL
M-3.1 NOT TO SCALE

NOTES:

- PROVIDE KITCHEN HOOD, AND EXHAUST DUCT, WITH U.L. LISTED FIRE PROTECTION SYSTEM. HOOD SHALL BE PROVIDED IN ACCORDANCE WITH U.L. 710 AND SHALL BE FACTORY PRE-PIPED WITH ANSUL R-102 FIRE SUPPRESSION SYSTEM. THE FIRE SUPPRESSION SYSTEM SHALL INSTANTLY EXTINGUISH FLAMES IN THREE CRITICAL AREAS: ON THE COOKING SURFACES, WITHIN THE HOOD PLENUM, AND WITHIN THE EXHAUST DUCT. THE FIRE SUPPRESSION SYSTEM SHALL BE U.L. 300 LISTED AND SHALL MEET ALL REQUIREMENTS OF THE UNIFORM FIRE CODE, THE MECHANICAL CODE, AND NFPA 96.
- PROVIDE A FIRE ALARM MONITORING CONNECTION TO THE HOOD SYSTEM. COORDINATE WITH THE FIRE ALARM SYSTEM.
- PROVIDE MANUAL RESET DEVICE TO RESET PRIOR TO RESTORING FUEL.
- THE EXTINGUISHING SYSTEM SHALL BE TIED INTO THE FIRE ALARM SYSTEM.
- AN AIR ACCEPTANCE TEST OF THE FIRE EXTINGUISHING HOOD SYSTEM SHALL BE CONDUCTED IN THE PRESENCE OF THE FIRE DEPARTMENT BEFORE THE START OF COOKING OPERATION. CONTACT 523-4186 TO SCHEDULE A FIRE INSPECTOR TO WITNESS.
- INSTALLATION OF THE EXHAUST HOOD, DUCT AND EXHAUST FAN SHALL BE IN ACCORDANCE WITH THE REQUIREMENTS OF THE 1997 UNIFORM MECHANICAL CODE AND 1997 UNIFORM FIRE CODE, AMENDED.
- CLEAN OUT ACCESS PANEL SHALL BE PROVIDED AT CHANGE OF DIRECTION IN EXHAUST DUCT FOR HOOD. ACCESS PANEL SHALL BE SECURED WITH WING NUTS.

REVISION NO.	SYM.	DESCRIPTION	SHT. OF	DATE
HAWAII ARMY NATIONAL GUARD DEPARTMENT OF DEFENSE STATE OF HAWAII KALAELOA BLDG 19 RENOVATION				
DETAILS				
		PROJECT NO. CA 2828	SHEET	
		DATE 6-07-10	M-3.1 88 OF 117 SHEETS	
DESIGNED BY: MM	CHECKED BY: MM			
DRAWN BY: JA	APPROVED BY: SH			

PACKAGED AIR COOLED AIR CONDITIONING EQUIPMENT SCHEDULE

PACU NO.	DESCRIPTION	AREA SERVED	TOTAL COOLING CAPACITY (BTUH)	SENSIBLE CAPACITY (BTUH)	EVAPORATOR						CONDENSER			COMPRESSOR			MIN. EER.	ELECTRICAL				UNIT WT. (LBS.)	REMARKS	
					SA CFM	EXT. SP (IN. WG)	OA CFM	ENT. COIL (DEG. °F)	FAN RPM	HP	AMB. TEMP (DEG. °F)	NO. OF FANS	FAN HP (EACH)	NO. OF COMPRESSOR	CAPACITY STEPS	RLA		LRA	MIN CIRCUIT AMPS	V	PH			HZ
PACU 1	ROOF TOP PACKAGED UNIT	LOCKER	87,500	69,100	3,000	3/4"	635	80.2/66.2	700	3	95°	2	1/4	2	4	13.5	88	12.7	38.6	208	3	60	1157	CARRIER MODEL 50PG08 OR APPROVED EQUAL
PACU 2	ROOF TOP PACKAGED UNIT	CLASSROOM 1, 2 & 3	120,800	85,000	3,500	3/4"	1165	81.8/68.2	850	5	95°	2	1/3	2	4	17.6	123	12.2	50.9	208	3	60	1258	CARRIER MODEL 50PG12 OR APPROVED EQUAL
PACU 3	ROOF TOP PACKAGED UNIT	OFFICE ORDERLY	23,000	15,400	600	3/4"	90	78.4/65.5	500	1	95°	1	1/8	1	2	12.8	60	11.5	21.9	208	1	60	754	CARRIER MODEL 50PG03 OR APPROVED EQUAL
PACU 4	ROOF TOP PACKAGED UNIT	EXERCISE	53,100	28,000	1,200	3/4"	480	82.7/69.1	700	1	95°	1	1/8	1	2	20.5	109	12.2	31.5	208	1	60	825	CARRIER MODEL 50PG05 OR APPROVED EQUAL
PACU 5	ROOF TOP PACKAGED UNIT	INFANTRY 196	60,300	41,800	1,700	3/4"	340	79.1/67.2	800	1 1/2	95°	1	1/4	1	2	26.9	145	12.2	40.0	208	1	60	925	CARRIER MODEL 50PG06 OR APPROVED EQUAL
PACU 6	ROOF TOP PACKAGED UNIT	MULTI-PURPOSE	180,000	130,000	5,000	3/4"	1265	80.0/67.5	1060	7 1/2	95°	3	1/3	3	4	18.1 18.1 17.6	137 137 123	11.6	74.2	208	3	60	1771	CARRIER MODEL 50PG16 OR APPROVED EQUAL
PACU 7	ROOF TOP PACKAGED UNIT	STATE OFFICE	48,000	35,500	1,600	3/4"	180	78.0/65.4	700	1	95°	1	1/8	1	2	20.5	109	12.2	31.5	208	1	60	825	CARRIER MODEL 50PG05 OR APPROVED EQUAL

FAN COIL UNIT SCHEDULE

FCU NO.	SERVES	CFM	O.A. CFM	SENSIBLE CAPACITY (BTUH)	TOTAL CAPACITY (BTUH)	E.S.P. INCHES	REFRIG. TEMP. (°F)	AIR TEMP.				COIL DATA		FILTER TYPE		MOTOR DATA				REMARKS
								ENT. °F DB	WB	LVG. °F DB	WB	MIN. ROWS	MAX. FPM	MEDIA	MAX. FV FPM	V	PH	Hz.	FLA	
FCU 1	ARMS VAULT	400	0	9,500	11,600	0	40	80	67	58	56	3	10	THROW-AWAY	500	115	1	60	4	MITSUBISHI MS-12DN

AIR COOLED CONDENSER SCHEDULE

ACCU NO.	SERVICE	HEAT REJECTION (BTUH)	SAT. COND. TEMP. °F	SAT. SUCTION TEMP. °F	AMB. TEMP. °F	REFRIG.	CONDENSER FAN DATA			CONDENSER COIL DATA		COMPRESSOR DATA		WEIGHT (LBS)	ELECTRICAL DATA				REMARKS
							NO.	TYPE	ELA EA.	NO. CIRCUITS IN SECT.	No.	LRA	RLA		VOLT	PH	Hz.	MCA	
ACCU 1	FCU 1	11,600	105	40	95	R-22	1	PROFELLER	0.4	1	1	29.0	8.0	-	208	1	60	15	MITSUBISHI MU-12DN

EXHAUST FAN SCHEDULE

UNIT No.	SERVICE	CFM	STATIC PRESS. INCHES	MOTOR DATA			DRIVE	RPM	TYPE	MIN. WHEEL DIA.	WT. LBS.	SOUND (SONES)	REMARKS
				HP	V	PH							
EF 1	KITCHEN HOOD	6,000	1"	3	208	3	BELT	571	UP-BLAST PRV	33"ø	430	13.6	COOK MODEL ACRU-B-330R10B OR EQUAL
EF 2	DISHWASHER HOOD	900	1"	1/3	115	1	BELT	1198	UP-BLAST PRV	18"ø	111	9.1	COOK MODEL ACRU-XD-180RX4B OR EQUAL
EF 3	GRIDDLE HOOD	1800	1"	3/4	208	3	BELT	920	UP-BLAST PRV	21"ø	270	9.5	COOK MODEL ACRU-HPL10 OR EQUAL
EF 4	SANITIZING SINK HOOD	900	1"	1/3	115	1	BELT	1198	UP-BLAST PRV	18"ø	111	9.1	COOK MODEL ACRU-XD-180RX4B OR EQUAL
EF 5	MEN/WOMEN TOILET	3200	1"	1	208	3	BELT	920	IN-LINE CENTRIFUGAL	21"ø	212	14.2	COOK MODEL SQN-B-210-SQN-B OR EQUAL
EF 6	MEN/WOMEN TOILET	2400	1"	3/4	208	3	BELT	1088	IN-LINE CENTRIFUGAL	18"ø	227	13.2	COOK MODEL SQN-B-180SQN-B OR EQUAL
EF 7	MEN TOILET	2200	0.5	1/3	115	1	BELT	819	PRV	18"ø	113	7.7	COOK MODEL ACE-B-180C4B OR EQUAL
EF 8	WOMEN TOILET	2400	1"	3/4	208	3	BELT	1088	IN-LINE CENTRIFUGAL	18"ø	227	13.2	COOK MODEL SQN-B-180SQN-B OR EQUAL

REVISION NO.	SYM.	DESCRIPTION	SHT. OF	DATE
		HAWAII ARMY NATIONAL GUARD DEPARTMENT OF DEFENSE STATE OF HAWAII KALAELOA BLDG 19 RENOVATION		
EQUIPMENT SCHEDULES				
DESIGNED BY: MM		CHECKED BY: MM		PROJECT NO. HIARNG CA 2828
DRAWN BY: JA		APPROVED BY: SH		DATE 6-07-10
				SHEET M-4.1 89 OF 117 SHEETS

This work was prepared by me or under my supervision and construction of this project will be under my observation. (Observation of construction as defined in Chapter 16-115, Subchapter 1 Definitions of the Hawaii Administrative Rules, Professional Engineers, Architects, Surveyors, and Landscape Architects.)
 MCE INTERNATIONAL, INC. 4/30/2012 EXP. DATE
 NOTE: Contractor to check and verify dimensions of job before proceeding with work.