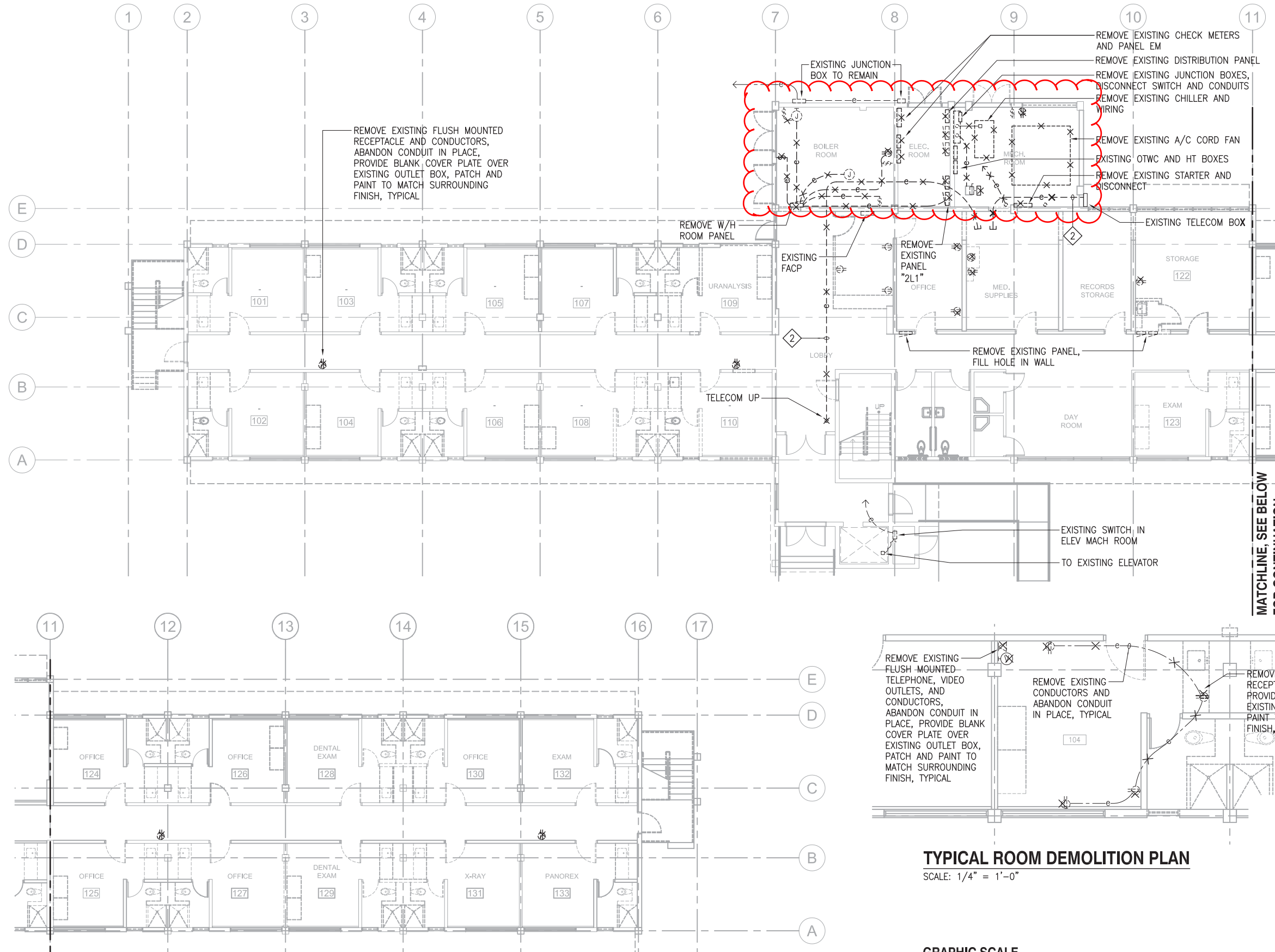
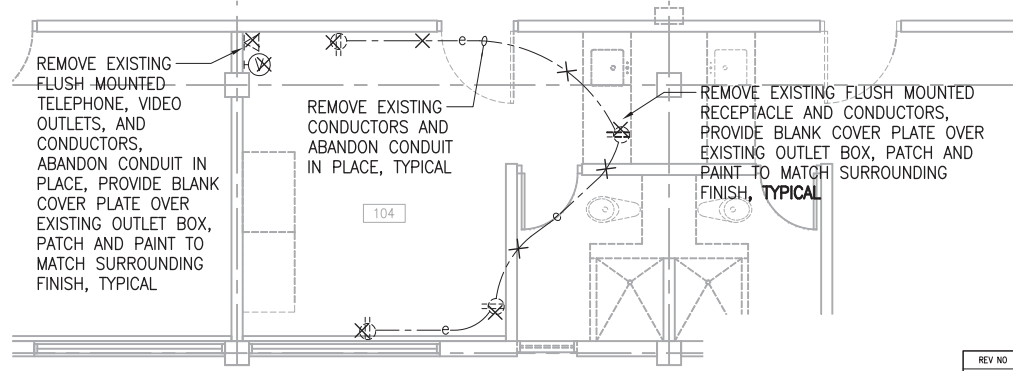


4/10/15-10:18 Y:\002\002\127\2\127 E1.1.DEM01.dwg

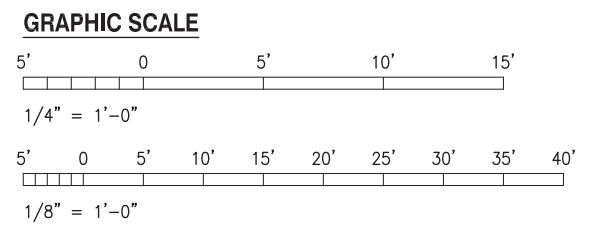


- NOTES:**
- COORDINATE REMOVAL OF OTWC AND HT CABLES WITH THE UTILITIES AND PROJECT MANAGER.
 - REMOVE EXISTING TELECOM CABLE AND RETURN TO PROJECT MANAGER. REMOVE EXPOSED CONDUIT. PATCH AND PAINT TO MATCH SURROUNDING FINISH.

MATCHLINE, SEE BELOW FOR CONTINUATION



TYPICAL ROOM DEMOLITION PLAN
SCALE: 1/4" = 1'-0"



THIS WORK WAS PREPARED BY ME OR UNDER MY SUPERVISION AND CONSTRUCTION OF THIS PROJECT WILL BE UNDER MY OBSERVATION.

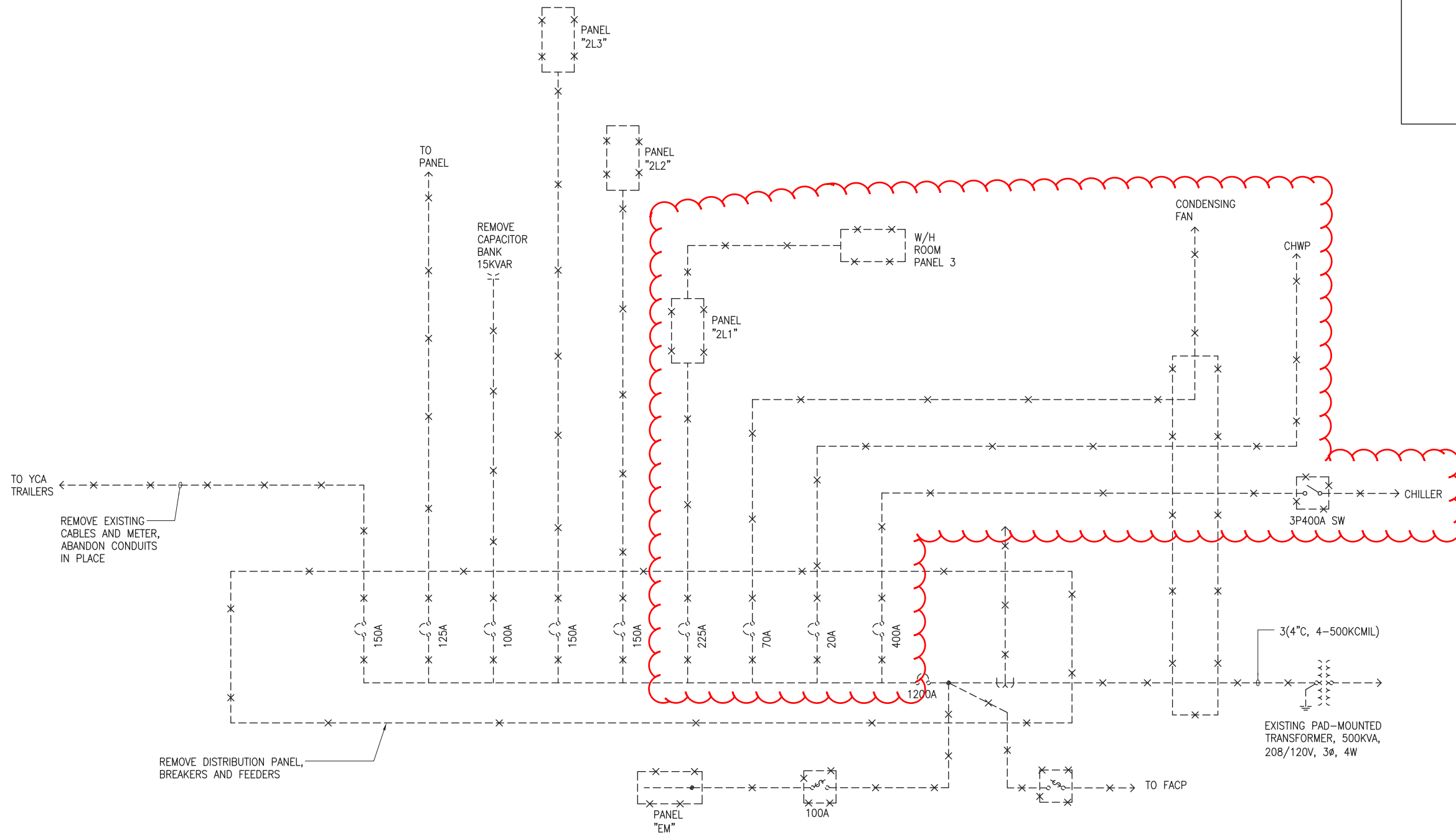
Glenn Karamatsu
PROJECT ENGINEER for ECS, Inc.
APRIL 30, 2016
EXPIRATION DATE OF THE LICENSE

MATCHLINE, SEE ABOVE FOR CONTINUATION

~~**1ST FLOOR ELECTRICAL DEMOLITION PLAN**~~
SCALE: 1/8" = 1'-0"

Drawings are for building reference only.

REV NO	DESCRIPTION	DATE
DEPARTMENT OF DEFENSE HAWAII ARMY NATIONAL GUARD STATE OF HAWAII		
PN15110011 KALAELOA BUILDING 46 INTERIOR RENOVATIONS KALAELOA, KAPOLEI, OAHU, HAWAII		
1ST FLOOR ELECTRICAL DEMOLITION PLAN		
DESIGNED BY: GK	CHECKED BY: GK	HARRIS JOB NO.
DRAWN BY: MC	APPROVED BY: GK	DATE
SCALE: AS NOTED		DRAWING NO. E1.1
		SHEET
		OF _____ SHTS



NOTE:

REMOVE ABANDONED CABLES AND EXPOSED CONDUITS. CONCEALED AND UNDERGROUND CONDUITS SHALL BE ABANDONED IN PLACE.

DEMOLITION ONE-LINE DIAGRAM

NO SCALE

Drawings are for building reference only.



THIS WORK WAS PREPARED BY ME OR UNDER MY SUPERVISION AND CONSTRUCTION OF THIS PROJECT WILL BE UNDER MY OBSERVATION.

Glenn Karamatsu
PROJECT ENGINEER for ECS, Inc.
APRIL 30, 2016
EXPIRATION DATE OF THE LICENSE

REV NO	DESCRIPTION	DATE

DEPARTMENT OF DEFENSE
HAWAII ARMY NATIONAL GUARD
STATE OF HAWAII

PN15110011
KALAELOA BUILDING 46
INTERIOR RENOVATIONS
KALAELOA, KAPOLEI, OAHU, HAWAII

DESIGNED BY:		CHECKED BY:		HARRIS JOB NO.	DRAWING NO.
GK	GK	GK	GK		E3.1
DRAWN BY:		APPROVED BY:		DATE	SHEET
MC	GK				
SCALE: AS NOTED					OF _____ SHTS