

BUILDING 306 HURRICANE HARDENING

HONOLULU, O'AHU, HAWAII TAX MAP KEY : 3-1-042:018

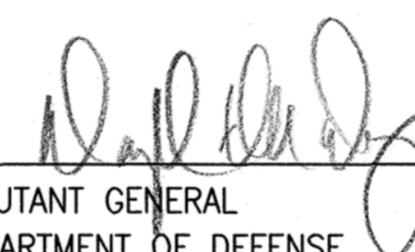
FOR THE
DEPARTMENT OF DEFENSE
STATE OF HAWAII
JOB NO. CA-1324-C

CONSULTANTS

ARCHITECT
DESIGN PARTNERS, INC.
1580 MAKALOA STREET, SUITE 1100
HONOLULU, HI 96814
(808) 949-0044

STRUCTURAL ENGINEER
MIYASATO KUNIYOSHI ENGINEERS LLC.
AIEA COMMERCIAL CENTER, SUITE 205
99-205 MOANALUA ROAD
AIEA, HI 96701
(808) 488-7579

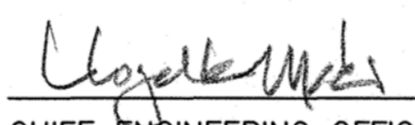
APPROVED BY:



ADJUTANT GENERAL
DEPARTMENT OF DEFENSE
STATE OF HAWAII

APR 30 2014

DATE

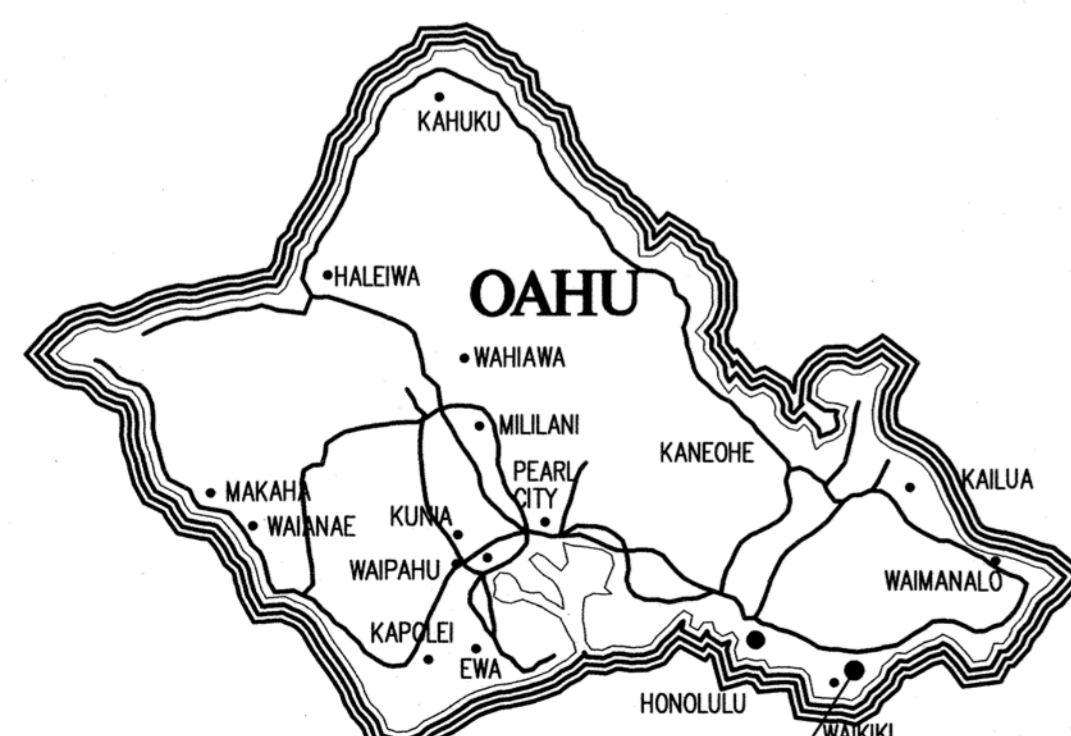


CHIEF ENGINEERING OFFICER,
DEPARTMENT OF DEFENSE
STATE OF HAWAII

4-29-14

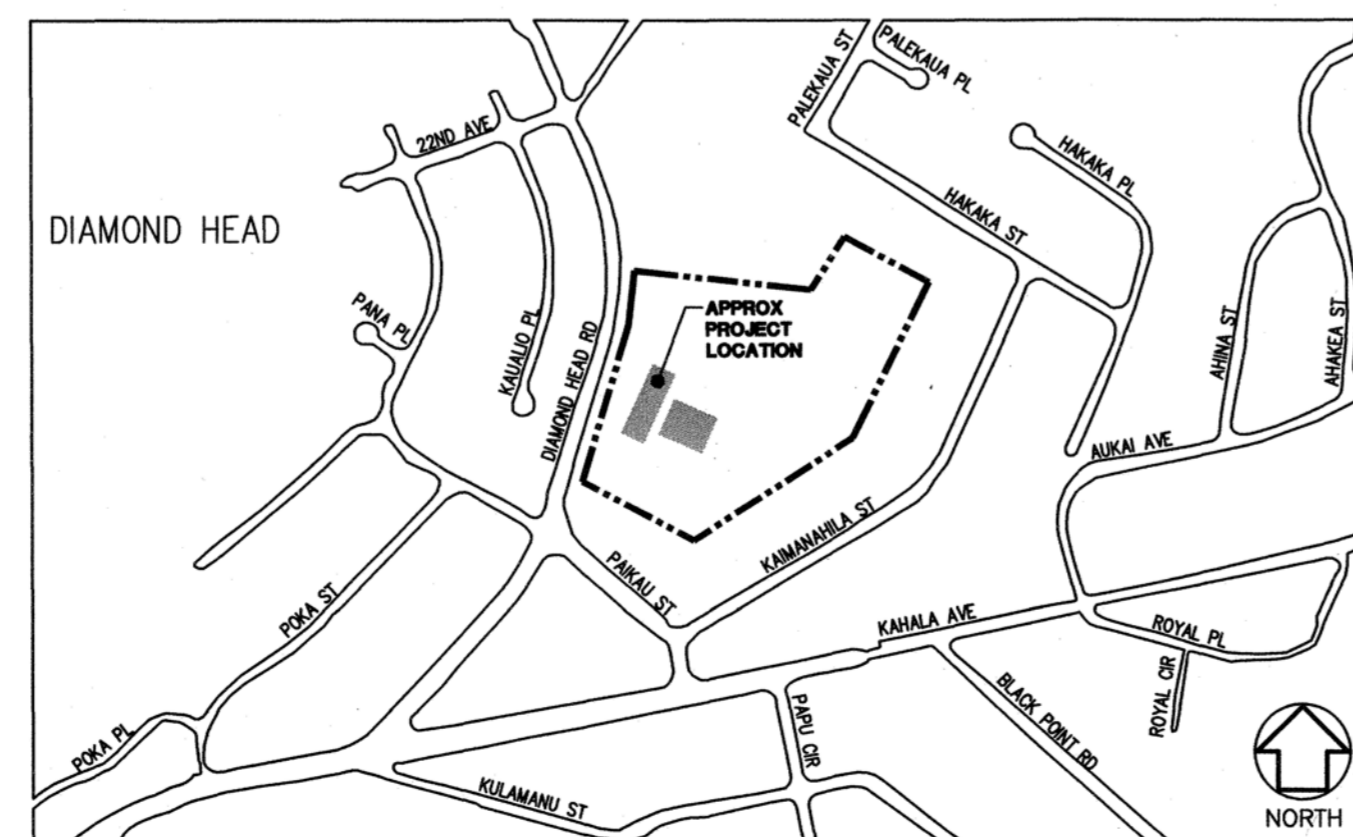
DATE

LOCATION MAP N.T.S.



BUILDING 306
DEPARTMENT OF DEFENSE

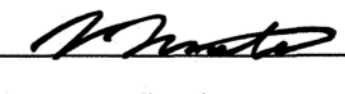
VICINITY MAP N.T.S.



REV. NO.	SYM.	DESCRIPTION	SHT. OF	DATE	APPROVED: DOD ADMINISTRATOR



This work was prepared by me or under my supervision, and construction of this project will be under my observation.


4/30/16
Expiration Date of the License

DEPARTMENT OF DEFENSE STATE OF HAWAII			
BUILDING 306 HURRICANE HARDENING HONOLULU, OAHU, HAWAII			
TITLE SHEET			
DESIGNED BY: NN	CHECKED BY: NN	JOB NO. CA-1324-C	DRAWING NO. T-1
DRAWN BY: JK	APPROVED BY: VI	DATE MAY 2014	SHEET 1 OF 7 SHEETS
SCALE: SCALE AS NOTED			

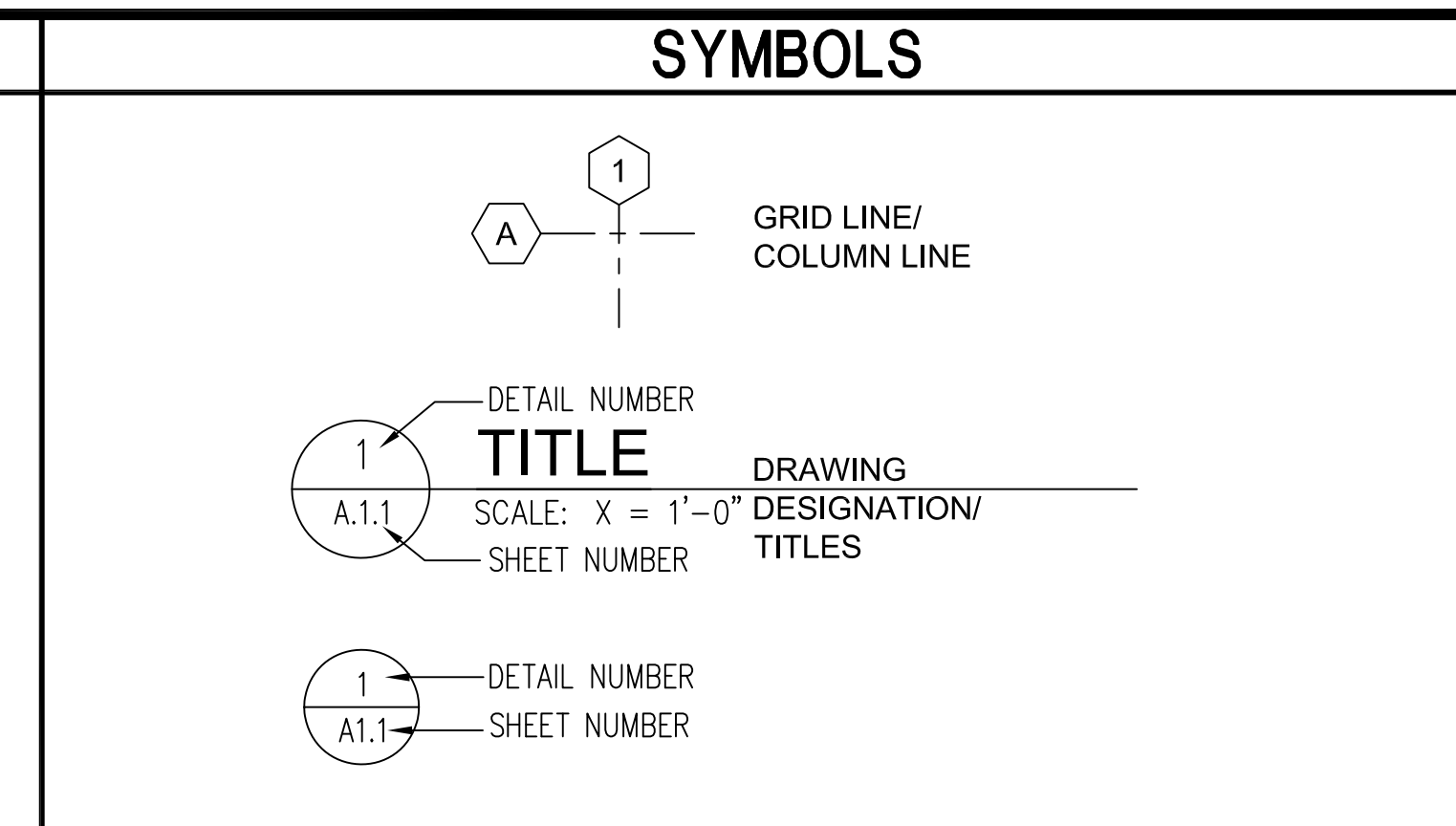
INDEX TO DRAWINGS		DESCRIPTION
PAGE NO.	SHEET NO.	TITLE
1	T-1	TITLE SHEET
2	T-2	SITE PLAN, DRAWING INDEX, NOTES
ARCHITECTURAL		
3	A-1	(E) LOWER LEVEL FLOOR PLAN
4	A-2	(E) UPPER LEVEL FLOOR PLAN
5	A-3	ELEVATIONS
6	A-4	WINDOW SCHEDULE, DOOR SCHEDULE, WIND DATA
7	A-5	SITE PHOTOGRAPHS, DETAILS

DEFS NOTES

- SHEATHING BOARD: 5/8" THICKNESS, EQUIVALENT TO GEORGIA PACIFIC DENSGLOSS GOLD BOARD, CERTAINTED GLASROC, OR PRE-APPROVED EQUIVALENT AS RECOMMENDED BY THE SYSTEM MANUFACTURER.
- EXTERIOR FINISH (PROTECTIVE COATING): PROVIDE INTEGRAL COLOR EXTERIOR FINISH SYSTEM, COMPOSED OF A POLYMER MODIFIED CEMENTITIOUS BASE COAT AND 100 PERCENT ACRYLIC TEXTURED WITH GRADED AGGREGATES.
- BASE COAT: STO FLEXYL BASE COAT WITH FIBER REINFORCEMENT OR PRE-APPROVED EQUIVALENT AS RECOMMENDED BY THE SYSTEM MANUFACTURER.
- SEALANT PRODUCTS: PROVIDE MANUFACTURER'S STANDARD NON-STAINING, QUICK DRYING, CHEMICALLY CURING, ONE-PART NONSAG URETHANE, ELASTOMERIC SEALANT CONFORMING TO ASTM C 920, TYPE S, GRADE NS, CLASS 25, USE NT OR LOW MODULUS SILICONE SEALANT, THAT IS COMPATIBLE WITH JOINT FILLERS, JOINT SUBSTRATES, AND OTHER RELATED MATERIALS AND COMPLIES WITH REQUIREMENTS OF SECTION 07920 - SEALANTS. SEALANTS SHALL BE RECOMMENDED BY BOTH THE SEALANT AND EXTERIOR FINISH SYSTEM MANUFACTURERS.
- SEALANT COLOR: MATCH FINISH COAT COLOR OF SYSTEM OR AS SELECTED BY THE PROJECT CONTACT PERSON.

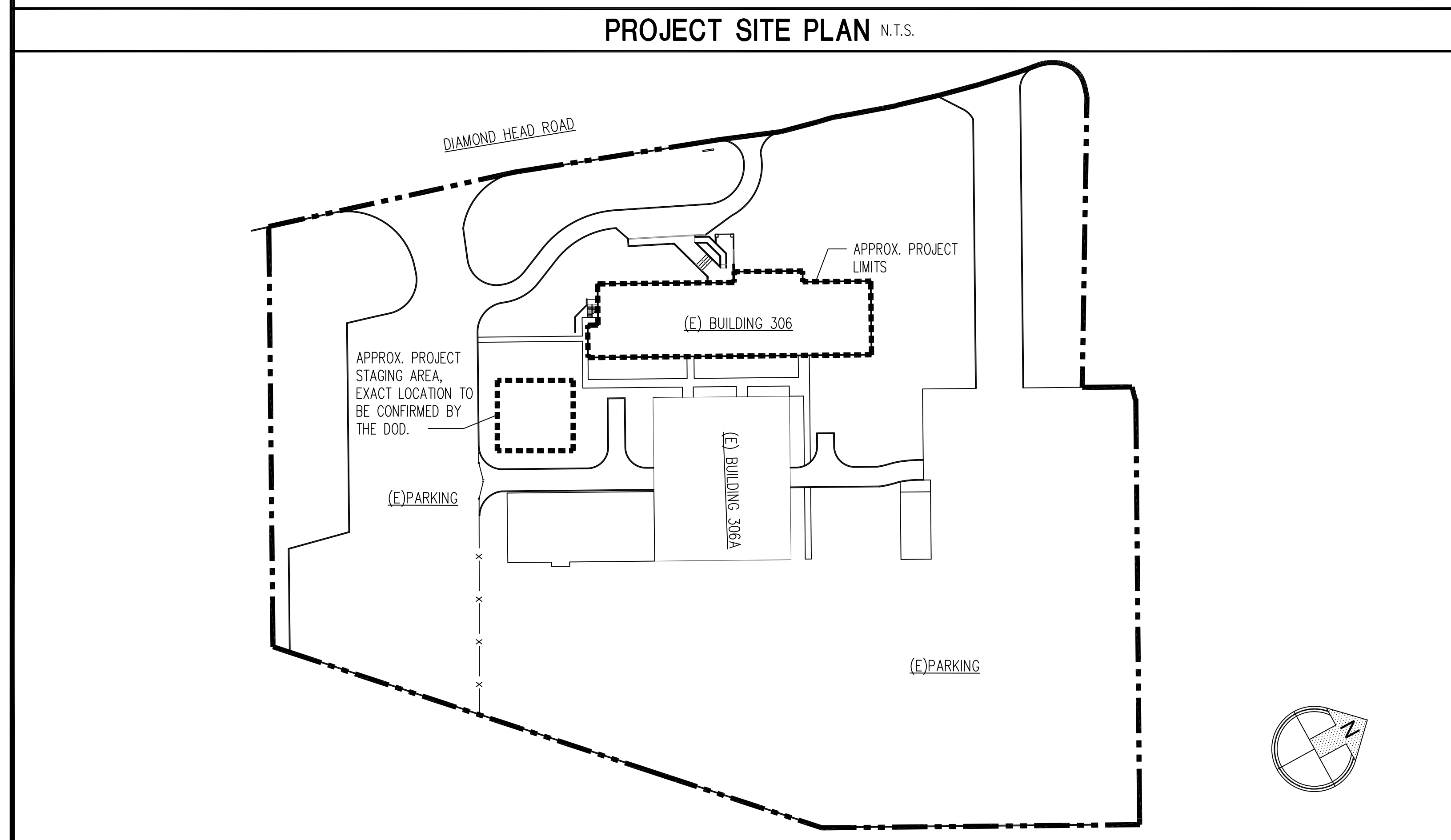
ABBREVIATIONS

&	AND	FDN.	FOUNDATION	S.C.	SOLID CORE
∠	ANGLE	F.E.	FIRE EXTINGUISHER	SCHED.	SCHEDULE
@	AT	F.E.C.	FIRE EXTINGUISHER CABINET	SCRN.	SCREEN
X	BY	FIN.	FINISH	SECT.	SECTION
℄	CENTERLINE	FLR.	FLOOR	S.F.	SQUARE FEET
∅	DIAMETER OR ROUND	FLASH'G.	FLASHING	SH.	SHelf
(E)	EXISTING	F.O.F.	FACE OF FRAMING	SHR.	SHOWER
(N)	NEW	F.O.S.	FACE OF STUDS	SHT.	SHEET
d	PENNY (NAIL SIZE)	F.R.P.	FIBERGLASS REINFORCED POLYESTER	SHT'G.	SHEATHING
%	PERCENT	F.S.	FREE STANDING	SIM.	SIMILAR
#	POUND OR NUMBER	FT.	FOOT OR FEET	SING.	SINGLE
A.B.	ANCHOR BOLT	FTG.	FOOTING	SL.	SLOPE
ABV.	ABOVE	GA.	GAUGE	SLDG.	SLIDING
A.C.	ASPHALTIC CONCRETE	GALV.	GALVANIZED	SMH	SEWER MANHOLE
ACOUS.	ACOUSTICAL	G.B.	GRAB BAR	SND	SANITARY NAPKIN DISPENSER
A.D.	AREA DRAIN	G.C.	GENERAL CONTRACTOR	S.O.G.	SLAB ON GRADE
ADJ.	ADJUSTABLE	GL.	GLASS	SP.	SPACE
AGGR.	AGGREGATE	GND.	GROUND	SPEC.	SPECIFICATION
ALT.	ALTERNATE	GR.	GRADE	SQ.	SQUARE
ALUM.	ALUMINUM	GYP. BD.	GYP. BOARD	S.F.	SQUARE FEET
ANOD.	ANODIZED	GFCI OR GFCI	GROUND FAULT INTERRUPTOR CIRCUIT	SST.	STAINLESS STEEL
APPROX.	APPROXIMATE	G.F.C.I.	GOVERNMENT FURNISHED/CONTRACTOR INSTALLED	STD.	STANDARD
ARCH.	ARCHITECTURAL	G.F.G.I.	GOVERNMENT FURNISHED/GOVERNMENT INSTALLED GLASS FIBER REINFORCED CEMENT	STL.	STEEL
BM.	BEAM	G.F.R.C.	GLASS FIBER REINFORCED CEMENT	STOR.	STORAGE
BEDRM.	BEDROOM	HARD BD.	HARD BOARD	STR.L.	STRUCTURAL
BD.	BOARD	H.C.	HANDICAP	SUSP.	SUSPENDED
BOT.	BOTTOM	H.M.	HOLLOW METAL	T.	TREAD
BLKG.	BLOCKING	HDWD.	HARDWOOD	T.B.	TOWEL BAR
BLDG.	BUILDING	HWDE.	HARDWARE	T.C.	TOP OF CURB
CAB.	CABINET	HORIZ.	HORIZONTAL	TEW	TOP OF EXISTING WALL
CEM.	CEMENT	HR.	HOUR	TF	TOP OF FENCE
C.T.	CERAMIC TILE	HS.	HAND SINK	T. & G.	TONGUE & GROOVE
CJ	COLD OR CONSTRUCTION JOINT	HT.	HEIGHT	THK.	THICK
CJ	CONSTRUCTION JOINT	H.	HIGH	THR.	THRESHOLD
CLG.	CEILING	I.D.	INSIDE DIAMETER (DIM.)	T.P.H.	TOILET PAPER HOLDER
CLOS.	CLOSET	INCL.	INCLUSIVE, INCLUDED, OR INCLUDING	TR	TRIM
CLR	CLEAR	INT.	INTERIOR	T.W.	TOP OF WALL
C.M.	CHANGE OF MATERIAL	INSUL.	INSULATION	TYP.	TYPICAL
C.M.U.	CONCRETE MASONRY UNIT	JT.	JOINT	U.O.N.	UNLESS OTHERWISE NOTED
CNTR.	COUNTER	KIT.	KITCHEN	U/S	UNDERSIDE
COL.	COLUMN	LAM.	LAMINATE(D)	VERT.	VERTICAL
CONC.	CONCRETE	LAV.	LAVATORY	VIF	VERIFY IN FIELD
COND.	CONDITION	LIN.	LINEN	V.C.T.	VINYL COMPOSITION TILE
CONN.	CONNECTION	LOUV.	LOUVERED	V.T.R.	VENT THRU ROOF
CONT.	CONTINUOUS	LT.	LIGHT	W.	WASHER
CPT.	CARPET	L.TG.	LIGHTING	W/	WITH
CTBB	CEMENT TILE BACKER BD.	L.T.	LAUNDRY TRAY	W.C.	WATER CLOSET
CTSK.	COUNTERSUNK	L.W.F.	LAMINATED WOOD FLOORING	WD.	WOOD
C.F.C.I.	CONTRACTOR FURNISHED/CONTRACTOR INSTALLED	MAX.	MAXIMUM	WDW.	WINDOW
∅	DIAMETER	MFG.	MANUFACTURING	W.H.	WATER HEATER
D	DRYER	M.C.	MEDICINE CABINET	W.O.	WHERE OCCURS
DBL.	DOUBLE	MED. CAB.	MEDICINE CABINET	WP.	WATERPROOF
DET.	DETAIL	MECH.	MECHANICAL	W.R.	WATER RESISTANT
D.E.F.S.	DIRECT EXTERIOR FINISH SYSTEM	MEMB.	MEMBRANE	WT.	WEIGHT
D.F.	DOUGLAS FIR	MET.	METAL	W.W.F.	WELDED WIRE FABRIC
DIA.	DIAMETER	MIN.	MINIMUM	W.W.M.	WELDED WIRE MESH
DIM.	DIMENSION	MIR.	MIRROR		
DISP.	DISPOSAL/DISPENSER	MISC.	MISCELLANEOUS		
DN.	DOWN	MTD.	MOUNTED		
DR.	DOOR	MTG.	MOUNTING		
DRS.	DOORS	MUL.	MULLION		
D.S.	DOWNSPOUT	N.	NORTH		
DW.	DISHWASHER	N.I.C.	NOT IN CONTRACT		
DWG.	DRAWING	NO. OR #	NUMBER		
E.A.	EACH	N.T.S.	NOT TO SCALE		
E.F.S.	EXTERIOR FINISH SYSTEM (SYNTHETIC STUCCO)	OBS.	OBSCURE		
E.J.	EXPANSION JOINT	O.C.	ON CENTER		
ELECT.	ELECTRICAL	OPNG.	OPENING		
ELEV.	ELEVATION	OPP.	OPPOSITE		
E.W.C.	ELECTRIC WATER COOLER	P.I.P.	POURED-IN-PLACE		
ENCL.	ENCLOSURE	PL.	PLATE		
E.P.S.	EXPANDED POLYSTYRENE (FOAM BOARD)	P.LAM.	PLASTIC LAMINATE		
EQ.	EQUAL	PLBG.	PLUMBING		
EXH.	EXHAUST	PLYWD.	PLYWOOD		
E.W.	EYE WASH	PNL.	PANEL		
EXP.	EXPANSION	PREFIN.	PREFINISHED		
(E)	EXISTING	PR.	PAIR		
EXIST.	EXISTING	PT.	POINT		
EXT.	EXTERIOR	PTN.	PARTITION		
		Q.T.	QUARRY TILE		
		R.	RISER		
		RAD.	RADIUS		
		REC.	RECESSED		
		REFR.	REFRIGERATOR		
		REINF.	REINFORCED OR REINFORCING		
		RESIL.	RESILIENT		
		RM.	ROOM		
		R.O.	ROUGH OPENING		



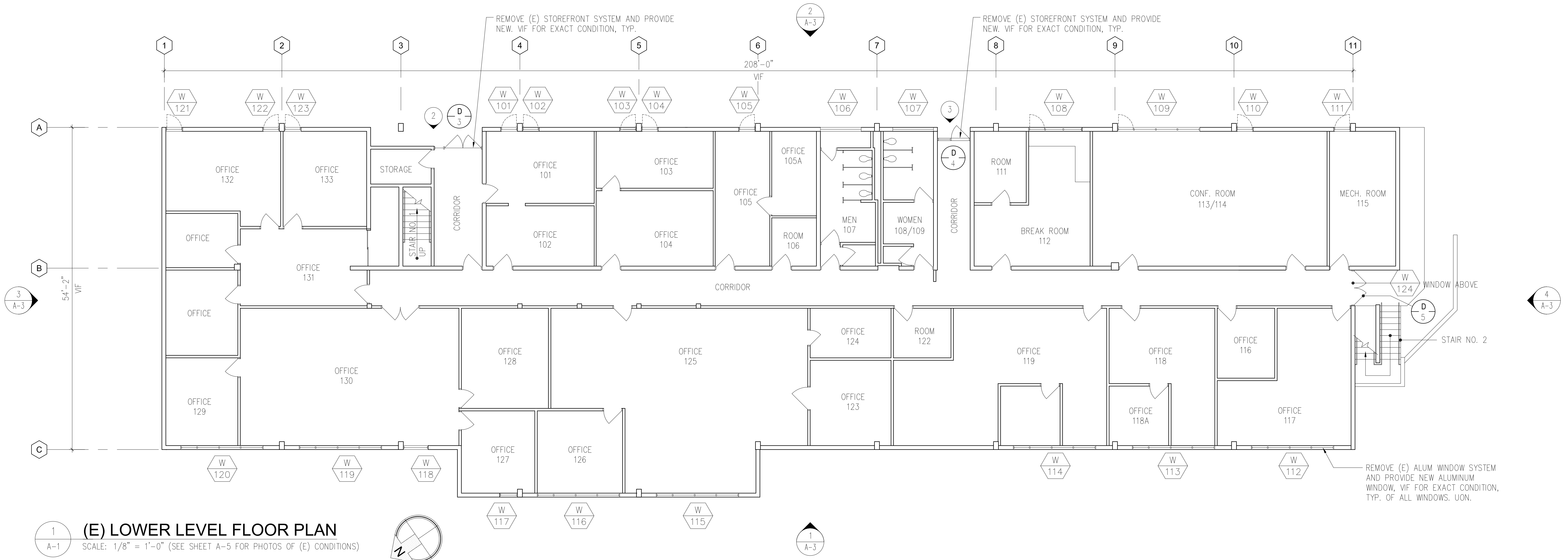
GENERAL NOTES

- THE GENERAL CONTRACTOR SHALL BE RESPONSIBLE FOR MAINTAINING THE BUILDING AND SITE CLEAN, AND PROVIDE ANY AND ALL SAFETY PROVISIONS TO ENSURE DOD STAFF EMPLOYEES AND PUBLIC SAFETY DURING THE CONSTRUCTION PERIOD OF THIS PROJECT.
- ALL DIMENSIONS SHOWN ARE SUBJECT TO VERIFICATION IN THE FIELD BY THE GENERAL CONTRACTOR, AND HE SHALL MAKE ALL CORRECTIONS AND ADJUSTMENTS AS REQUIRED PRIOR TO FABRICATION AND OR INSTALLATION.
- ALL MATERIALS FURNISHED BY THE GENERAL CONTRACTOR SHALL BE NEW AND FREE FROM DEFECTS.
- EXCEPT FOR MATERIAL TO BE TURNED OVER TO THE STATE, THE GENERAL CONTRACTOR SHALL REMOVE AND DISPOSE OF ALL DEBRIS, RUBBISH AND OTHER MATERIAL RESULTING FROM DEMOLITION OPERATIONS. DISPOSAL WILL BE IN ACCORDANCE WITH ALL LOCAL, STATE AND/OR FEDERAL REGULATIONS GOVERNING SUCH OPERATIONS.
- THE GENERAL CONTRACTOR SHALL FIELD VERIFY ALL EXISTING CONDITIONS AND DIMENSIONS. THE GENERAL CONTRACTOR SHALL NOTIFY THE PROJECT CONTACT PERSON OF ANY DISCREPANCIES PRIOR TO CONSTRUCTION AND FABRICATION. CONTRACTOR TO VERIFY ALL SIZES, TYPES, AND QUANTITIES.
- THE GENERAL CONTRACTOR IS RESPONSIBLE TO COORDINATE WITH THE STATE FOR DISCONNECTING, RECONNECTING AND REINSTALLATION OF THE EXISTING STATE ALARM BELL AND SECURITY ALARM/ACCESS SYSTEM AS REQUIRED TO COMPLETE THE WORK. IF A SECURITY COMPANY MUST BE INVOLVED AS REQUIRED BY THE STATE OR BY THE SECURITY COMPANY THE CONTRACTOR SHALL RETAIN AND PAY FOR THE SECURITY VENDOR. THE CONTRACTOR SHALL COVER AND PROTECT ALL FIRE BELLS, PROGRAM BELL, HORNS, PUBLIC ADDRESS SPEAKERS, CAMERAS, CARD READERS AND KEYPADS. THE CONTRACTOR SHALL TEST FIRE ALARM, PROGRAM BELLS AND PUBLIC ADDRESS SYSTEMS AS APPLICABLE BEFORE AND AFTER ANY WORK THAT WILL AFFECT THEIR FUNCTION.
- THE GENERAL CONTRACTOR SHALL REPAIR, PATCH, SMOOTH, AND FINISH TO MATCH ADJACENT SURFACES DAMAGED FROM REMOVAL OR DEMOLITION WORK. EXISTING CONSTRUCTION REQUIRED TO BE REMOVED AND/OR DEMOLISHED TO PERFORM THE WORK INDICATED IN THE DRAWINGS AND SPECIFICATIONS SHALL BE REPAIRED AND/OR REPLACED TO MATCH EXISTING CONDITIONS.
- THE GENERAL CONTRACTOR SHALL FIELD VERIFY ALL EXISTING DOOR SWINGS, SIZES, TYPES AND CONDITIONS PRIOR TO ORDERING OF MATERIAL AND INSTALLATION AND TO THE SATISFACTION OF THE PROJECT CONTACT PERSON.
- THE CONTRACTOR SHALL PROTECT FROM DAMAGE EXISTING IMPROVEMENTS, ADJACENT PROPERTIES AND BUILDINGS, WHICH ARE NOT NOTED FOR REMOVAL OR MODIFICATION. IF DAMAGE OCCURS, RESTORE TO ORIGINAL CONDITION AT NO ADDITIONAL COST TO THE STATE AND TO THE SATISFACTION OF THE PROJECT CONTACT PERSON. THE CONTRACTOR IS ALSO RESPONSIBLE TO RESTORE THE GROUNDS (GRASSING), REPLACING IRRIGATION LINES & SPRINKLER HEADS, REPLACE AND/OR REPAIR DAMAGED CONCRETE WALKWAYS WHERE IT IS USED FOR CONTRACTOR PARKING AND STAGING.
- THE CONTRACTOR SHALL VISIT THE SITE, COMPARE THE DRAWINGS AND SPECIFICATIONS AND INFORM HIMSELF OF ALL CONDITIONS IN ORDER TO COMPLETE THE PROJECT IN ACCORDANCE WITH THE INTENT OF THE DRAWINGS.
- THE CONTRACTOR SHALL CLEAN AND PREPARE ALL NEW AND EXISTING SURFACES AS REQUIRED TO RECEIVE NEW WORK OR AS OTHERWISE REQUIRED FOR A NEAT AND FINISHED APPEARANCE.
- BEFORE ANY SERVICE IS DISCONNECTED OR INTERRUPTED, THE CONTRACTOR SHALL VERIFY USAGE AND ASSURE THAT REQUIRED SERVICES ARE NOT DISCONNECTED OR INTERRUPTED. ANY REQUIRED SERVICE DISCONNECTED OR INTERRUPTED SHALL BE RESTORED IMMEDIATELY BY THE CONTRACTOR AT NO ADDITIONAL COST TO THE STATE.
- NO ON-SITE WORK SHALL BEGIN UNTIL ALL NECESSARY MATERIALS AND EQUIPMENT ARE IN THE POSSESSION OF THE CONTRACTOR AND SUB-CONTRACTORS AS VERIFIED BY THE PROJECT CONTACT PERSON, ONCE ON-SITE WORK IN A GIVEN ROOM IS STARTED, THE WORK SHALL BE PERFORMED EXPEDITIOUSLY AND COMPLETED BEFORE COMMENCING WORK ON THE NEXT ROOM/WINDOW.
- CONTRACTOR SHALL READ AND COMPLY WITH ENVIRONMENTAL CONSULTING SERVICES SPECIFICATION SECTIONS 01715, 13280, 13283 AND 13288 PRIOR TO COMMENCEMENT OF ANY WORK.



∅	DIAMETER	MAX.	MAXIMUM	W.	WASHER
D	DRYER	MFG.	MANUFACTURING	W/	WITH
DBL.	DOUBLE	M.C.	MEDICINE CABINET	W.C.	WATER CLOSET
DET.	DETAIL	MED. CAB.	MEDICINE CABINET	WD.	WOOD
D.E.F.S.	DIRECT EXTERIOR FINISH SYSTEM	MECH.	MECHANICAL	WDW.	WINDOW
D.F.	DOUGLAS FIR	MEMB.	MEMBRANE	W.H.	WATER HEATER
DIA.	DIAMETER	MET.	METAL	W.O.	WHERE OCCURS
DIM.	DIMENSION	MIN.	MINIMUM	WP.	WATERPROOF
DISP.	DISPOSAL/DISPENSER	MIR.	MIRROR	W.R.	WATER RESISTANT
DN.	DOWN	MISC.	MISCELLANEOUS	WT.	WEIGHT
DR.	DOOR	MTD.	MOUNTED	W.W.F.	WELDED WIRE FABRIC
DRS.	DOORS	MTG.	MOUNTING	W.W.M.	WELDED WIRE MESH
D.S.	DOWNSPOUT	MUL.	MULLION		
DW.	DISHWASHER	N.	NORTH		
DWG.	DRAWING	N.I.C.	NOT IN CONTRACT		
E.A.	EACH	NO. OR #	NUMBER		
E.F.S.	EXTERIOR FINISH SYSTEM (SYNTHETIC STUCCO)	N.T.S.	NOT TO SCALE		
E.J.	EXPANSION JOINT	OBS.	OBSCURE		
ELECT.	ELECTRICAL	O.C.	ON CENTER		
ELEV.	ELEVATION	OPNG.	OPENING		
E.W.C.	ELECTRIC WATER COOLER	OPP.	OPPOSITE		
ENCL.	ENCLOSURE	P.I.P.	POURED-IN-PLACE		
E.P.S.	EXPANDED POLYSTYRENE (FOAM BOARD)	PL.	PLATE		
EQ.	EQUAL	P.LAM.	PLASTIC LAMINATE		
EXH.	EXHAUST	PLBG.	PLUMBING		
E.W.	EYE WASH	PLYWD.	PLYWOOD		
EXP.	EXPANSION	PNL.	PANEL		
(E)	EXISTING	PREFIN.	PREFINISHED		
EXIST.	EXISTING	PR.	PAIR		
EXT.	EXTERIOR	PT.	POINT		
		PTN.	PARTITION		
		Q.T.	QUARRY TILE		
		R.	RISER		
		RAD.	RADIUS		
		REC.	RECESSED		
		REFR.	REFRIGERATOR		
		REINF.	REINFORCED OR REINFORCING		
		RESIL.	RESILIENT		
		RM.	ROOM		
		R.O.	ROUGH OPENING		

REV. NO.	SYM	DESCRIPTION	SHT. OF	DATE	APPROVED: DOD ADMINISTRATOR
DEPARTMENT OF DEFENSE STATE OF HAWAII BUILDING 306 HURRICANE HARDENING HONOLULU, OAHU, HAWAII SITE PLAN, DRAWING INDEX, NOTES					
		This work was prepared by me or under my supervision, and construction of this project will be under my observation.			
DESIGN PARTNERS, INC. DESIGNED BY: NN DRAWN BY: JK		CHECKED BY: NN APPROVED BY: VI		JOB NO. CA-1324-C DATE MAY 2014	
4/30/16 Expiration Date of the License		SCALE: SCALE AS NOTED		DRAWING NO. T-2 SHEET 2 OF 7 SHEETS	



1 (E) LOWER LEVEL FLOOR PLAN
SCALE: 1/8" = 1'-0" (SEE SHEET A-5 FOR PHOTOS OF (E) CONDITIONS)

CONCRETE REPAIR NOTES

- THE CONTRACTOR SHALL SOUND ALL CONC. IN GENERAL REPAIR AREAS TO IDENTIFY DELAMINATED AREAS.
- THE SPALLED AND DELAMINATED CONC. SHALL BE COMPLETELY REMOVED TO SOUND SUBSTRATE AND BEYOND THE EXTENT OF THE CORRODED REINFORCING, THE CONTRACTOR SHALL TAKE THE NECESSARY PRECAUTIONS TO AVOID DAMAGING THE UNDERLYING SOUND CONC.
- THE SPALLED AND DELAMINATED EDGES SHALL BE SQUARED BY SAW-CUTTING AND CHIPPING THE CONC. AT THE PERIMETER BEYOND THE REMOVAL AREA AS NECESSARY TO ATTAIN A MINIMUM DEPTH OF 3/4" AND TO PREVENT FEATHER EDGE CONDITIONS, EXERCISE GREAT CARE TO AVOID CUTTING OR DAMAGING ANY (E) EMBEDDED STEEL REINFORCING, ANGLES BETWEEN ADJACENT SAW-CUTS AROUND THE PERIMETER SHALL NOT BE LESS THAN 90 DEGREES AND THE SHAPE OF EACH PATCH SHALL NOT BE IRREGULAR.
- FOR ANY EXPOSED REINFORCEMENT WITHIN THE REPAIR AREA, ADDITIONAL CONC. SHALL BE REMOVED FOR A MINIMUM 3/4" CLEAR SPACE MEASURED RADIALLY AROUND THE BARS.
- (E) CONC. SURFACES WITHIN THE REPAIR AREAS SHALL BE ROUGHENED TO ENSURE PROPER ADHESION WITH REPAIR MATERIAL.
- ALL EXPOSED CONC. SURFACES AND REINFORCING BARS IN THE REPAIR AREA SHALL BE GROUND, WIRE BRUSHED OR NEEDLE GUNNED TO REMOVE ALL SCALE, LOOSE RUST, DEBRIS AND DETERIORATED CONC., ANY AREAS NOT PATCHED MORE THAN 48 HOURS AFTER SANDBLASTING SHALL BE RECLEANED.
- ALL EXPOSED STEEL SHALL BE LIBERALLY COATED WITH ANTI-CORROSION COATING PER MANUFACTURER'S RECOMMENDATIONS.
- PRIOR TO PLACEMENT OF REPAIR MATERIAL, ALL CONC. REPAIR SURFACES SHALL BE WASHED WITH CLEAN WATER AND THE EXPOSED CONC. SURFACE SHALL BE SATURATED WITH NO WATER ACCUMULATION ON THE SURFACE.
- THE REPAIRED SURFACE FINISH SHALL MATCH THE ORIGINAL SURFACE FINISH.
- CONC. REPAIRS SHALL BE CURED A MINIMUM OF 7 DAYS BY COVERING THE SURFACE WITH A POLYETHYLENE SHEET OVER WET BURLAP, OR A CURING COMPOUND APPROVED BY THE ARCHITECT.
- PATCHING MATERIAL SHALL BE FACTORY BLENDED POLYMER MODIFIED CEMENTIOUS MATERIALS WITH A CORROSION INHIBITOR SUCH AS "PLANITOP X" OR "PLANITOP XS" BY MAPEI CORPORATION OR AS APPROVED EQUAL.

REMOVE (E) SUSPENDED SOFFIT AND PROVIDE NEW 5/8" DENSGLASS SHEATHING W/ DEFS OVER 3 3/8" METAL FRAMING AT 12" O.C. APPROX. 20 SF VIF FOR EXACT CONDITION, PROVIDE SEALANT AROUND ALL (E) CONDUITS, VIF FOR EXACT CONDITION, FINISH TO MATCH (E) UPPER SOFFIT, SEE NOTES, SHT. T-2.



2 DOOR NO. 3 SOFFIT
SCALE: NTS

REMOVE (E) SUSPENDED SOFFIT AND PROVIDE NEW 5/8" DENSGLASS SHEATHING W/ DEFS OVER 3 3/8" METAL FRAMING AT 12" O.C. APPROX. 20 SF VIF FOR EXACT CONDITION, FINISH TO MATCH (E) UPPER SOFFIT, SEE NOTES, SHT. T-2.



3 DOOR NO. 4 SOFFIT
SCALE: NTS

REMOVE (E) WINDOW SYSTEM AND PROVIDE NEW, TYP.
REPAIR CRACKS AT (E) CONC. SEE NOTES THIS SHEET.



4 WINDOW 109 SILL
SCALE: NTS

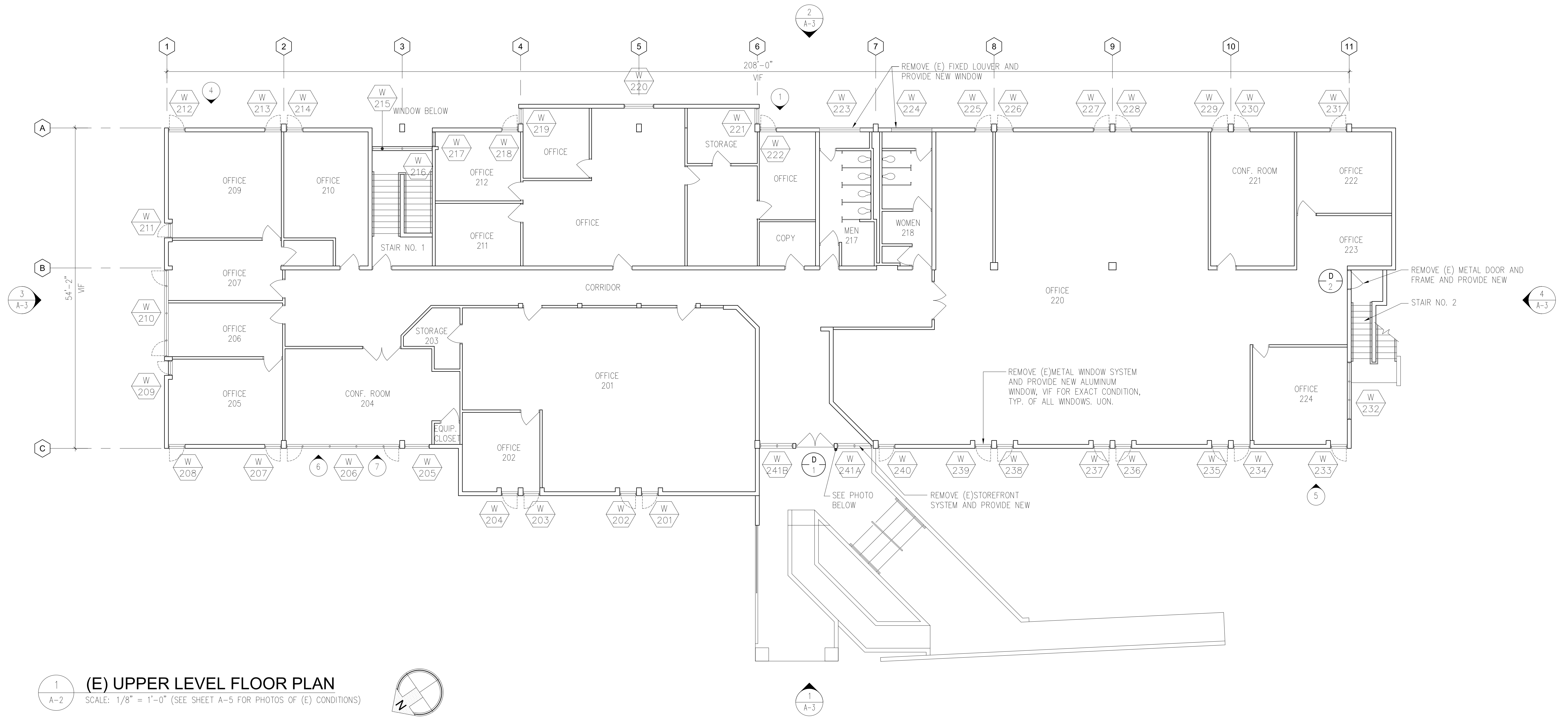
REMOVE (E) WINDOW SYSTEM AND PROVIDE NEW, TYP.
REPAIR CRACKS AT (E) CONC. SEE NOTES THIS SHEET.



5 WINDOW 107 SILL
SCALE: NTS

PATCH (E) CONC. SILL, PAINT TO MATCH (E) SEE NOTES THIS SHEET.

REV. NO.	SYM.	DESCRIPTION	SHT. OF	DATE	APPROVED: DOD ADMINISTRATOR
DEPARTMENT OF DEFENSE STATE OF HAWAII BUILDING 306 HURRICANE HARDENING HONOLULU, OAHU, HAWAII (E) LOWER LEVEL FLOOR PLANS					
DESIGNED BY: NN		CHECKED BY: NN		JOB NO: CA-1324-C	DRAWING NO: A-1
DRAWN BY: JK		APPROVED BY: VI		DATE: 4/30/16	SHEET: 3
SCALE: SCALE AS NOTED				EXPIRATION DATE OF LICENSE: MAY 2014	OF 7 SHOTS



1 (E) UPPER LEVEL FLOOR PLAN
 A-2 SCALE: 1/8" = 1'-0" (SEE SHEET A-5 FOR PHOTOS OF (E) CONDITIONS)

(E) DOOR ELECTRONIC SECURITY SYSTEM NOTES

1. THE EXISTING ALUMINUM AND GLASS STOREFRONT DOORS AND HOLLOW METAL DOORS ARE EQUIPPED WITH A GALAXY SERIES A600 ELECTRONIC DOOR SECURITY CONTROL SYSTEM.
2. THE CONTRACTOR SHALL BE RESPONSIBLE FOR THE REMOVAL AND REINSTALLATION OF THE ELECTRONIC DOOR SECURITY HARDWARE, INCLUDING BUT NOT LIMITED TO THE BALANCED MAGNETIC SWITCHES, POWER SUPPLIES, CIRCUITRY AND SOLENOID WITHIN THE PANIC BAR, ETC.
3. SHOULD THE CONTRACTOR DAMAGE A COMPONENT(S) OF THE ELECTRONIC DOOR SECURITY SYSTEM DURING ITS REMOVAL OR REINSTALLATION, THE CONTRACTOR SHALL BE RESPONSIBLE TO REPLACE THE COMPONENT(S) WITH A NEW COMPONENT(S) COMPATIBLE WITH THE SYSTEM AND OF EQUAL QUALITY, AT NO ADDITIONAL COST TO THE STATE.
4. THE ELECTRONIC DOOR SECURITY HARDWARE SHALL BE FULLY OPERATION UPON ITS REINSTALLATION.
5. PRIOR TO THE PROPOSED DATE FOR REMOVAL OF THE ELECTRONIC SECURITY DOOR HARDWARE, THE CONTRACTOR SHALL COORDINATE THE WORK A MINIMUM OF FIVE (5) WORKING DAYS IN ADVANCE WITH THE HIARNG FMO SECURITY PERSONNEL (POINT OF CONTACT: NOLAN; BUS. PH.: 672-1350, MOBILE: 721-6184). THE HIARNG FMO WILL ASCERTAIN THE OPERATIONAL CONDITION OF THE ELECTRONIC DOOR SECURITY CONTROL SYSTEM.
6. THE CONTRACTOR SHALL ALSO COORDINATE THE DATE AND TIME WHEN REINSTALLATION OF THE ELECTRONIC DOOR SECURITY HARDWARE WILL BE COMPLETED WITH THE HIARNG FMO. THE HIARNG FMO WILL ASCERTAIN WHETHER THE ELECTRONIC DOOR SECURITY CONTROL SYSTEM HAS BEEN PROPERLY INSTALLED AND IS OPERATIONAL (I.E. TO THE CONDITION PRESENT PRIOR TO REMOVAL OF THE SYSTEM).

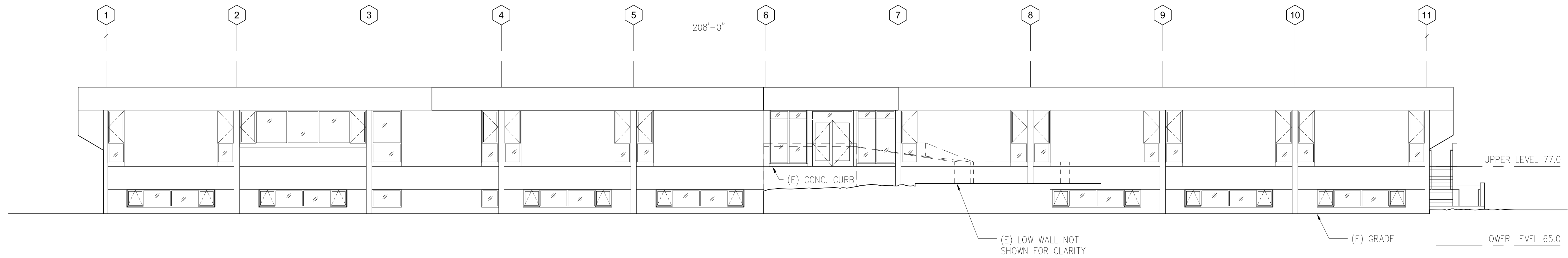


2 (E) SHRUBS, TYP.
 A-2 SCALE: NTS

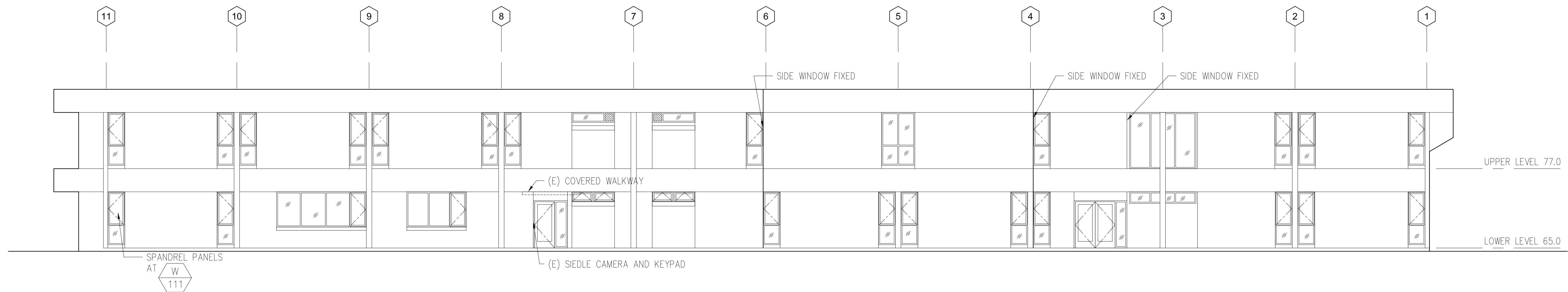


3 DOOR NO. 1 STOREFRONT CONC.
 A-2 SCALE: NTS

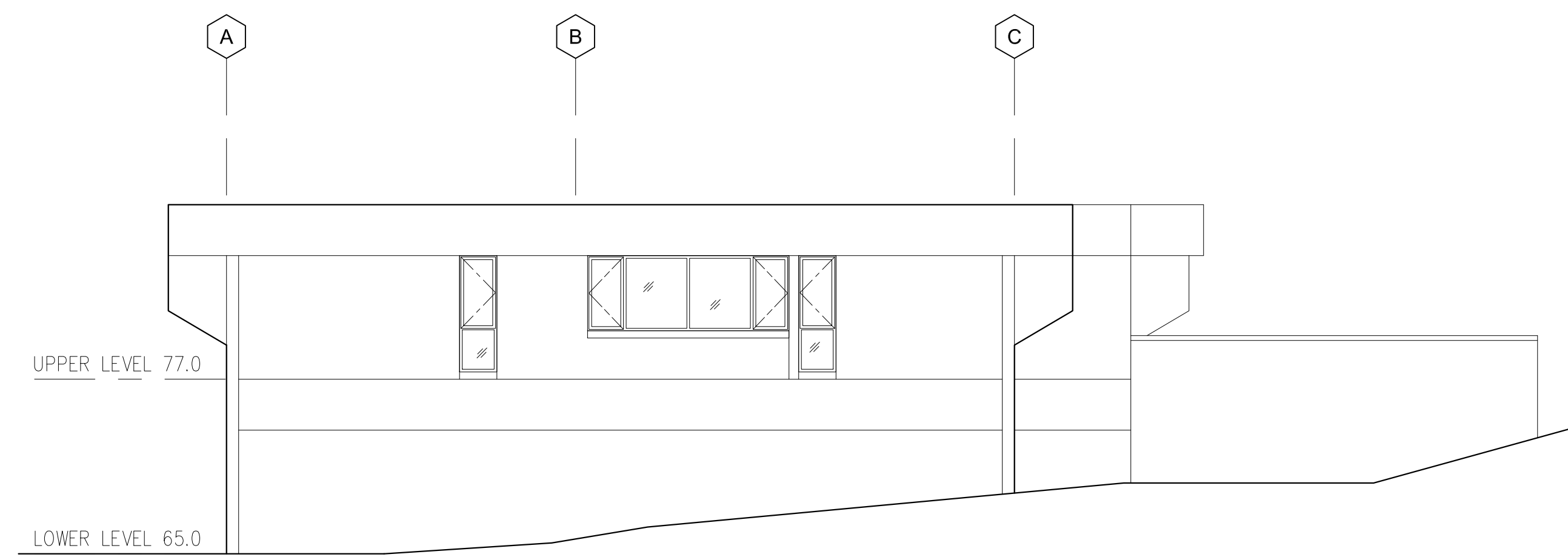
REV. NO.	SYM.	DESCRIPTION	SHT. OF	DATE	APPROVED: OOD ADMINISTRATOR
DEPARTMENT OF DEFENSE STATE OF HAWAII BUILDING 306 HURRICANE HARDENING HONOLULU, OAHU, HAWAII (E) UPPER LEVEL FLOOR PLANS					
		DESIGN PARTNERS, INC.		JOB NO. CA-1324-C	DRAWING NO. A-2
DESIGNED BY: NN		CHECKED BY: NN		DATE	
DRAWN BY: JK		APPROVED BY: VI		MAY 2014	
4/30/16 Expiration Date of the License		SCALE: SCALE AS NOTED		OF 7 SHTS.	



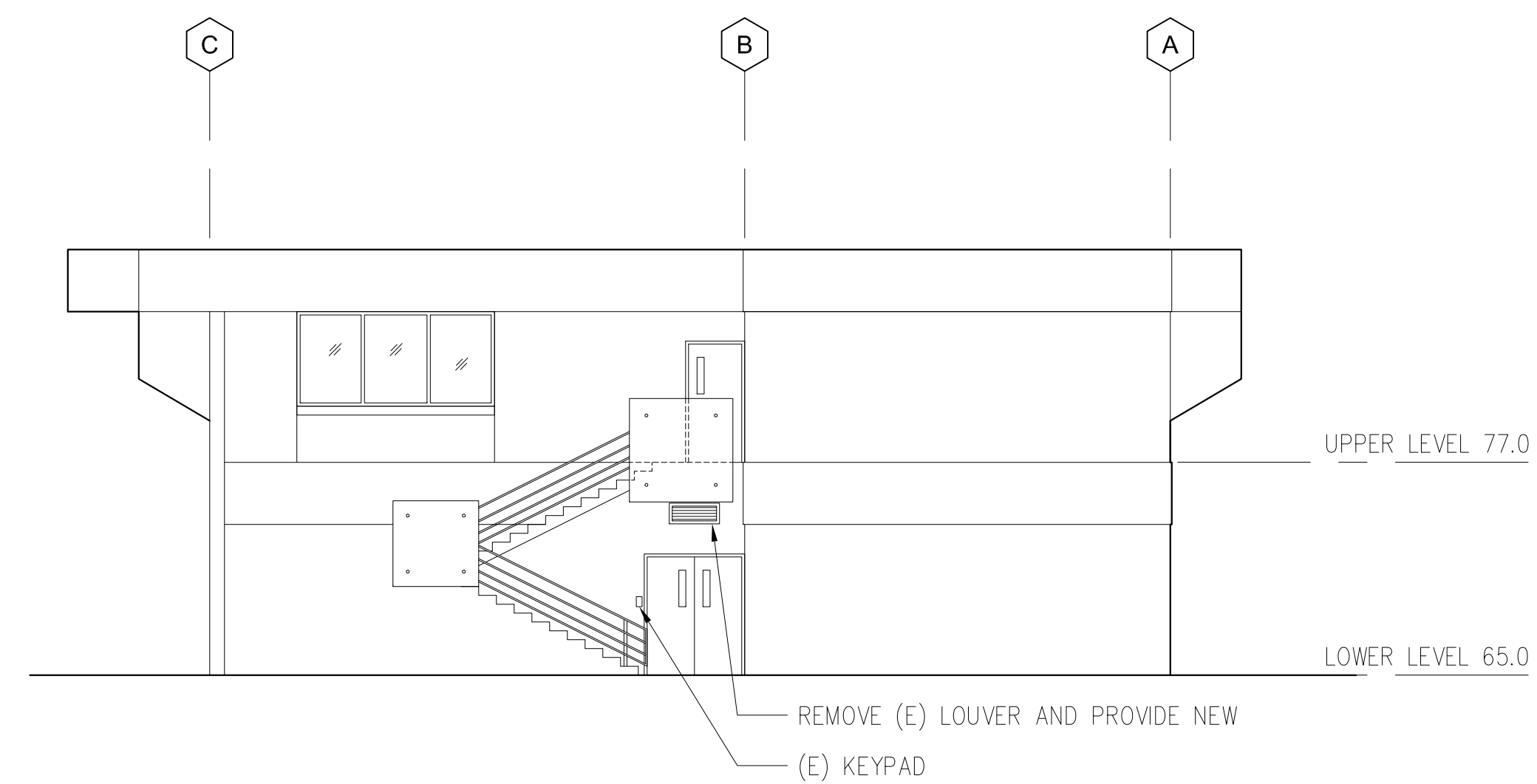
1 (E) NORTH ELEVATION
A-3 SCALE: 1/8" = 1'-0"



2 (E) SOUTH ELEVATION
A-3 SCALE: 1/8" = 1'-0"



3 (E) WEST ELEVATION
A-3 SCALE: 1/8" = 1'-0"



4 (E) EAST ELEVATION
A-3 SCALE: 1/8" = 1'-0"

REV. NO.	SYM.	DESCRIPTION	SHT. OF	DATE	APPROVED: DOD ADMINISTRATOR

VERNON D. INOSHITA
LICENSED PROFESSIONAL ARCHITECT
No. 3480
HAWAII, U.S.A.

This work was prepared by me or under my supervision, and construction of this project will be under my observation.

[Signature]
4/30/16
Expiration Date of the License

DEPARTMENT OF DEFENSE
STATE OF HAWAII

BUILDING 306 HURRICANE HARDENING
HONOLULU, OAHU, HAWAII

ELEVATIONS

JOB NO. CA-1324-C
DRAWING NO. **A-3**

DESIGNED BY: NN
CHECKED BY: NN

DRAWN BY: JK
APPROVED BY: VI

DATE: MAY 2014
SHEET 5 OF 7 SHTS.

SCALE: SCALE AS NOTED

WINDOW SCHEDULE

WINDOW NO.	SIZE (W X H) (R.O.)	TYPE	DET.	FRAME MATERIAL	REMARKS
101	2'-6 3/4" X 8'-0"	A	9/A-5	ALUM	
102	2'-6 3/4" X 8'-0"	A	9/A-5	ALUM	
103	2'-6 3/4" X 8'-0"	A	9/A-5	ALUM	
104	2'-6 3/4" X 8'-0"	A	9/A-5	ALUM	
105	2'-6 3/4" X 8'-0"	A	9/A-5	ALUM	
106	6'-5 1/2" X 1'-6"	N	9/A-5	ALUM	
107	6'-5 1/2" X 1'-6"	N	9/A-5	ALUM	
108	9'-0" X 5'-3 1/2"	H	9/A-5	ALUM	
109	13'-7" X 5'-4"	I	9/A-5	ALUM	
110	2'-6 3/4" X 8'-0"	A	9/A-5	ALUM	
111	2'-6 3/4" X 8'-0"	A	9/A-5	ALUM	
112	13'-4 1/2" X 2'-8 1/4"	E	9/A-5	ALUM	
113	13'-4 1/2" X 2'-8 1/4"	E	9/A-5	ALUM	
114	13'-4 1/2" X 2'-8 1/4"	E	9/A-5	ALUM	
115	13'-4 1/2" X 2'-8 1/4"	E	9/A-5	ALUM	
116	13'-4 1/2" X 2'-8 1/4"	E	9/A-5	ALUM	
117	2'-6 3/4" X 2'-8 1/4"	F	9/A-5	ALUM	
118	4'-6" X 2'-8 1/4"	F	9/A-5	ALUM	
119	13'-4 1/2" X 2'-8 1/4"	E	9/A-5	ALUM	
120	13'-4 1/2" X 2'-8 1/4"	E	9/A-5	ALUM	
121	2'-6 3/4" X 2'-8 1/4"	A	9/A-5	ALUM	
122	2'-6 3/4" X 2'-8 1/4"	A	9/A-5	ALUM	
123	2'-6 3/4" X 2'-8 1/4"	A	9/A-5	ALUM	
124	2'-10" X 1'-2"	O	8/A-5	ALUM	FIXED LOUVER

WINDOW NO.	SIZE (W X H) (R.O.)	TYPE	DET.	FRAME MATERIAL	REMARKS
201	2'-6 3/4" X 8'-0"	A	9/A-5	ALUM	
202	2'-6 3/4" X 8'-0"	A	9/A-5	ALUM	
203	2'-6 3/4" X 8'-0"	A	9/A-5	ALUM	
204	2'-6 3/4" X 8'-0"	A	9/A-5	ALUM	
205	4'-6" X 8'-0"	D	9/A-5	ALUM	
206	18'-10" X 5'-1 1/4"	K	9/A-5	ALUM	
207	2'-6 3/4" X 8'-0"	A	9/A-5	ALUM	
208	2'-6 3/4" X 8'-0"	A	9/A-5	ALUM	
209	2'-6 3/4" X 8'-0"	A	9/A-5	ALUM	
210	14'-7" X 5'-2"	J	9/A-5	ALUM	
211	2'-6 3/4" X 8'-0"	A	9/A-5	ALUM	
212	2'-6 3/4" X 8'-0"	A	9/A-5	ALUM	
213	2'-6 3/4" X 8'-0"	A	9/A-5	ALUM	
214	2'-6 3/4" X 8'-0"	A	9/A-5	ALUM	
215	10' 3/4" X 1'-9"	G	9/A-5	ALUM	
216	10'-3/4" X 9'-4"	G	9/A-5	ALUM	
217	2'-8" X 8'-0"	A	9/A-5	ALUM	
218	2'-6 3/4" X 8'-0"	A	9/A-5	ALUM	
219	3'-0" X 8'-0"	A	9/A-5	ALUM	
220	5'-1 1/4" X 8'-0"	C	9/A-5	ALUM	
221	3'-0" X 8'-0"	A	9/A-5	ALUM	
222	2'-6 3/4" X 8'-0"	A	9/A-5	ALUM	
223	6'-5 1/2" X 1'-6"	M	9/A-5	ALUM	
224	6'-5 1/2" X 1'-6"	M	9/A-5	ALUM	
225	2'-6 3/4" X 8'-0"	A	9/A-5	ALUM	
226	2'-6 3/4" X 8'-0"	A	9/A-5	ALUM	
227	2'-6 3/4" X 8'-0"	A	9/A-5	ALUM	
228	2'-6 3/4" X 8'-0"	A	9/A-5	ALUM	
229	2'-6 3/4" X 8'-0"	A	9/A-5	ALUM	
230	2'-6 3/4" X 8'-0"	A	9/A-5	ALUM	
231	2'-6 3/4" X 8'-0"	A	9/A-5	ALUM	
232	11'-1 3/4" X 5'-4"	G	9/A-5	ALUM	
233	2'-6 3/4" X 8'-0"	A	9/A-5	ALUM	
234	2'-6 3/4" X 8'-0"	A	9/A-5	ALUM	
235	2'-6 3/4" X 8'-0"	A	9/A-5	ALUM	
236	2'-6 3/4" X 8'-0"	A	9/A-5	ALUM	
237	2'-6 3/4" X 8'-0"	A	9/A-5	ALUM	
238	2'-6 3/4" X 8'-0"	A	9/A-5	ALUM	
239	2'-6 3/4" X 8'-0"	A	9/A-5	ALUM	
240	2'-6 3/4" X 8'-0"	A	9/A-5	ALUM	
241A	5'-10" X 8'-1"	L	10/A-5	ALUM	
241B	5'-10" X 8'-1"	L	10/A-5	ALUM	

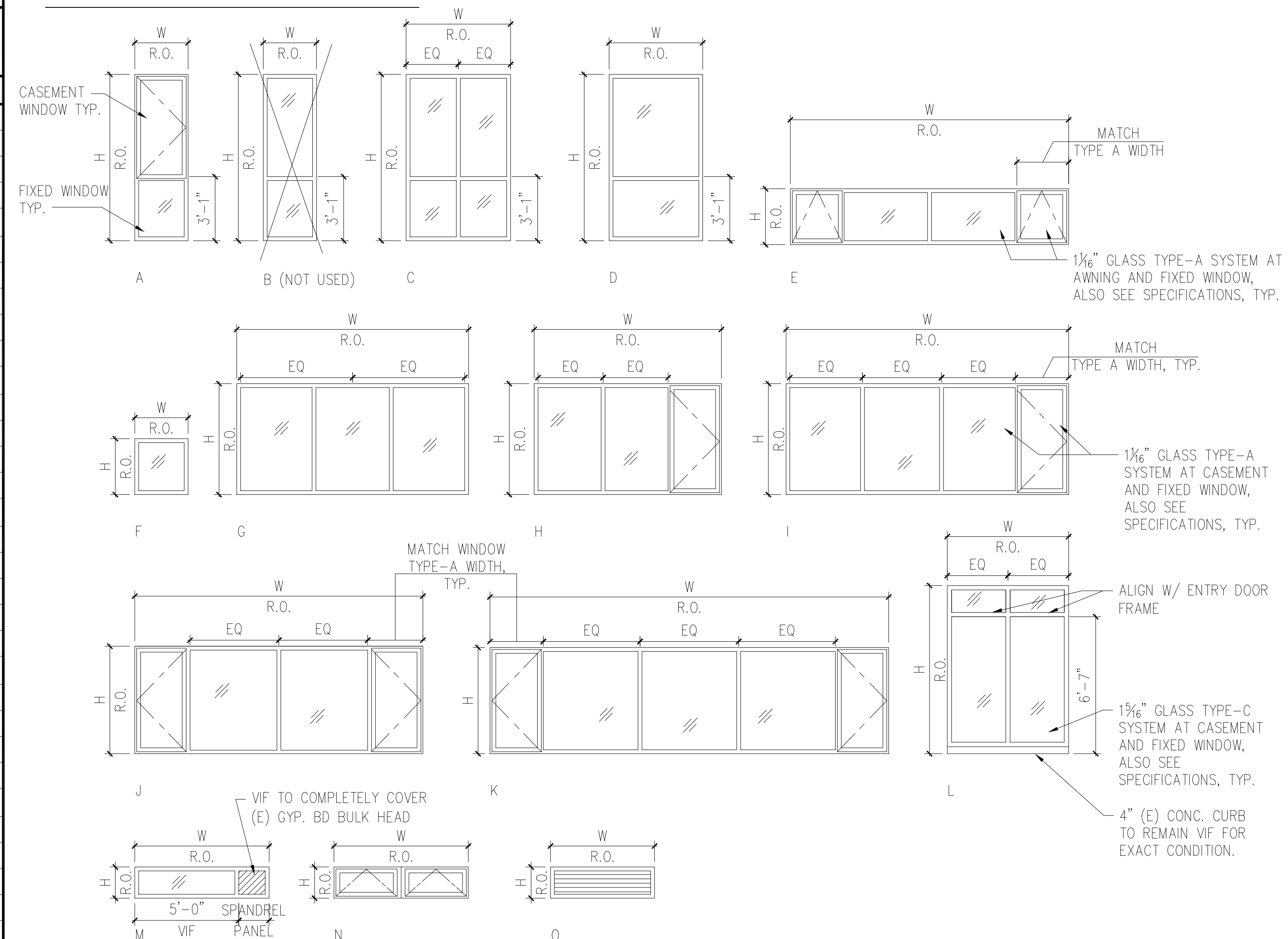
DOOR SCHEDULE

DR NO.	TYPE	FINISH	CONSTRUCTION				HARDWARE NUMBER	DIMENSIONS			DETAILS			REMARKS
			DOOR	FRAME	GLAZING	FIRE RATING		THK	WIDTH (R.O.)	HEIGHT (R.O.)	THRESHOLD	JAMB 1	HEAD	
UPPER LEVEL														
1	A	MANF	ALUM	ALUM	YES	--	001	--	6'-4"	8'-6"	11/A-5	12/A-5	10/A-5	--
2	D	PAINT	MET	MET	YES	--	002	1 3/4"	3'-4"	7'-2"	11/A-5 SIM.	13/A-5	13/A-5	--
LOWER LEVEL														
3	B	MANF	ALUM	ALUM	YES	--	001	--	8'-0"	7'-2 1/4"	11/A-5	12/A-5	10/A-5	DELETE (E) CONC. CURB
4	C	MANF	ALUM	ALUM	YES	--	003	--	5'-2"	7'-2 1/4"	11/A-5	12/A-5	10/A-5	DELETE (E) CONC. CURB
5	E	PAINT	MET	MET	YES	--	005	1 3/4"	6'-0"	7'-2"	11/A-5 SIM.	13/A-5	13/A-5	(E) THRESHOLD TO REMAIN

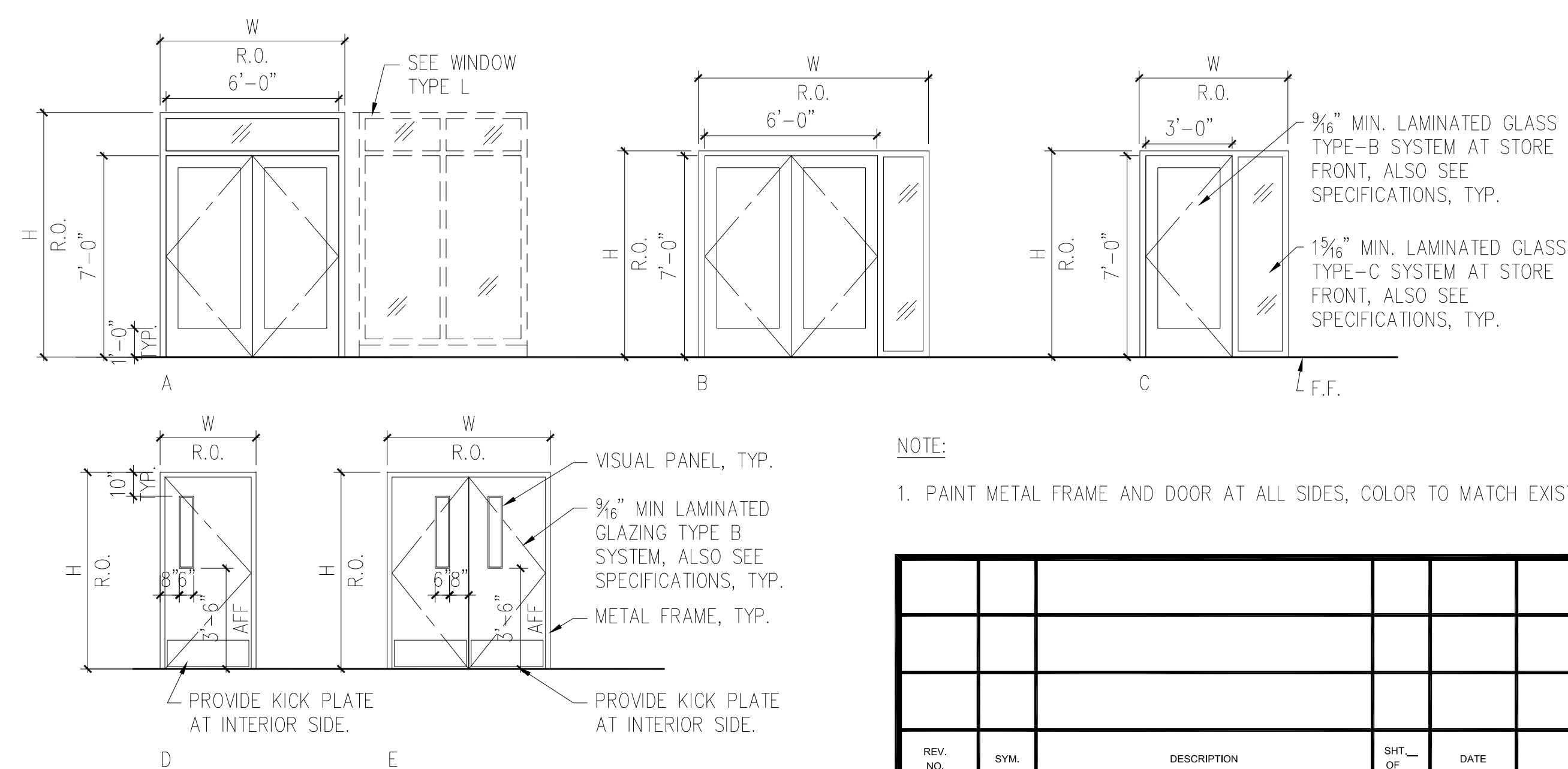
WIND DATA FOR WINDOWS AND DOORS

REFERENCE: BUILDING CODE OF THE CITY AND COUNTY OF HONOLULU (AMENDED IBC 2006) WIND SPEED: 140 MPH EXPOSURE: C TOPOGRAPHY FACTOR: 1.6 DIRECTIONALITY FACTOR: 0.7 IMPORTANCE FACTOR: 1.15	WIND PRESSURE	
	INWARD	OUTWARD
	65 PSF	81 PSF

WINDOW TYPE



DOOR TYPE



TYP. NOTES:

- CONTRACTOR SHALL REMOVE AND REINSTALL (E) CURTAIN SYSTEM AS REQUIRED FOR ALL WINDOW INSTALLATION.
- ALL SIGNAGE AT ENTRY DOORS SHALL BE REMOVED AND REINSTALL, EXACT LOCATIONS TO BE DETERMINED BY DOD.
- GLASS FOR WINDOW SYSTEM SHALL BE PREINSTALLED INTO WINDOW FRAMES PRIOR TO DELIVERING TO THE PROJECT SITE, STOREFRONT GLASS CAN BE INSTALLED ON SITE.

NOTE:

- PAINT METAL FRAME AND DOOR AT ALL SIDES, COLOR TO MATCH EXISTING.

REV. NO.	SYM.	DESCRIPTION	SHT. OF	DATE	APPROVED: DOD ADMINISTRATOR
DEPARTMENT OF DEFENSE STATE OF HAWAII BUILDING 306 HURRICANE HARDENING HONOLULU, OAHU, HAWAII WINDOW SCHEDULE, DOOR SCHEDULE, WIND DATA					
DESIGNED BY: NN		CHECKED BY: NN		JOB NO: CA-1324-C	DRAWING NO: A-4
DRAWN BY: JK		APPROVED BY: VI		DATE	SHEET 6
SCALE: SCALE AS NOTED				MAY 2014	OF 7 SHTS.
This work was prepared by me or under my supervision, and construction of this project will be under my observation. 4/30/16 Expiration Date of the License					

