



STATE OF HAWAII
KA MOKU'ĀINA O HAWAII
DEPARTMENT OF DEFENSE
KA 'OIHANA PILI KAUA
OFFICE OF THE DIRECTOR OF EMERGENCY MANAGEMENT
4204 DIAMOND HEAD ROAD
HONOLULU, HAWAII 96816-4420

MINUTES

Hawaii Advisory Council on Emergency Management [HACEM] Meeting
HI-EMA Building 303 - Business Recovery Center

March 14, 2024

HACEM Members: Darryl Oliveira, County of Hawaii [Chair]
William C. Bergin, County of Hawaii [Regrets]
Mona Curry, City and County of Honolulu
Glenda Nogami-Streufert, County of Kauai
Gerry Silva, City and County of Honolulu

**DOD, HI-EMA,
and State Partners:** MG Kenneth S. Hara, Adjutant General
BG Stephen F. Logan, Deputy Adjutant General
James DS. Barros, Administrator of HI-EMA
Don Aweau, Executive Officer of HI-EMA
Craig Iha, Deputy Attorney General
Hiro Toiya, Director, City & County of Honolulu, Depart. of Emergency Management
Elton Ushio, Administrator of Kauai Emergency Management
Amos Lonokailua-Hewett, Administrator of Maui Emergency Management
Talmadge Magno, Administrator of Hawaii Civil Defense
Shirley "Kiele" Amundson, Communications Director of HI-EMA
Ethann Oki, Special Projects Coordinator of HI-EMA
Nathan Garrett, Informational Technology Specialist of HI-EMA
Kelli Nicklaus-Ciccone, Private Secretary of HI-EMA

Guest(s): Governor Josh Green, M.D.

Public: None

I. Welcome/Call to Order

II. Open Remarks

- Darryl Oliveira– Welcome. Have had communications with the HACEM Members regarding the Ethics Training and the Sunshine Law.
- MG Hara– Welcome to Governor Green for his participation in this HACEM Meeting. Will discuss communications, Sunshine Law rules, and lessons learned from the Maui Wild Fires more in depth as we move through the agenda.

III. Minutes

- The 26 October 2023 HACEM Meeting Minutes have been reviewed and approved.

IV. Governor Josh Green, M.D. *(slide presented – not for distro)*

Spoke to the ongoing Wildfire Response providing updates on recent efforts for Maui’s recovery.

- Recovery Process: Implementing 20 smart fire sensors across Maui; re-establish a Fire Marshal position in DLIR; Non-Congregate Shelter (NCS) housing (from 7,000 to 3,300 units); securitization – ongoing legislative debates.
- Recovery Timeline and Actions for Recovery (sheltering survivors; recovery programs implemented/issues; economic development plan; infrastructure restoration.
- Working Recovery Cost Estimates
- Maui’s Housing Shortage
- Mid- to Long-Term Housing – Bringing housing to our state balancing our need.
- Active Housing Projects
- The Green Administration’s Priorities for Hawai’i
 - Budget Priorities
 - A Motivated Work Force – remove vacant positions from 3-5 years and increase the other positions 15-20%. Increase the budget by removing lingering vacancies.
 - A New Fire Marshal
 - Cost of Living

Mona Curry- Will there be a wage increase for the Emergency Management Staff? Hawaii Emergency Managers deserve a more robust and competitive salary.

Hiro Toiya- The Mayor has provided authority to hire above minimum challenging for the County level and varies significantly at the State level.

Governor Green- Once there is a direct comparison, the County often pays more than the State.

- Discussing system capacity with additional technology from 2020–2023, the time frame was COVID focus and other. Today with perpetual funding, we could dedicate funds to mitigation projects (improve roads; making beaches safer/secure; cyber security/have apps that can withstand; work with landowners and write a MOU; etc.).

V. Council Member Reports / Updates

a.) Hawaii

Darryl Oliveira

The new HACEM Member is under review with the Governor and the Board & Commissions. I have had some discussions with HACEM members and, in particular Mona, regarding the Council’s roles and purpose as an advisory board to the governor. We would like to explore HACEM member meetings on a more regular interval aside from the quarterly meeting.

b.) Maui

Amos Lonokailua-Hewett

New Maui HACEM Member to be appointed after Senate Confirmation this legislative season, the member will be able to attend the next HACEM Meeting.

c.) Oahu

Gerry Silva (*Slides presented, see attached*)

My concern is that HI-EMA may not currently be receiving the community benefits, especially the improved connectivity, that is normally negotiated when a cable franchise is granted or renewed. However, these benefits can be reopened by the Department of Commerce and Consumer Affairs when appropriate. Quotes from Decision and Order 346 (D&O 346), agreement with Spectrum for Oahu is shown for reference. Franchise language for other counties is similar.

Many of these benefits are in the form of improved connectivity between local government agencies and educational organizations. This is done with no charge to the state or county and known as the Institutional Network (INET) - discussed in slides 8 and 9. Ideally, connections should be capable of connecting points on the network using fiber that can accommodate bi-directional high-definition content.

Specific emergency management benefits under current franchises are shown in slides 10 and 11. These are minimal, but possible changes to the current benefits are shown in slide 12.

Elton Ushio- On KEMA we were able to obtain free cable services.

Mona Curry (*Slides presented, see attached*)

- Presented status of the Ko'olauloa Community Resilience Hub (KCRH) – Huli wa'a (tsunami ready; hurricane and typhoon; 2000 person capacity; stand alone operations for 30 days; food security; community micro-grid). Cost estimated at \$5.4 million. Continue to work with Dotty through the changes in completing of the environmental assessment and then move forward with Phase 2. Will provide broad band to the community, received a star link as a test pilot. The completed project can be a model for other community resilience hubs.

Gerry Silva- Poly carbonate sheets to protect windows, building material - concrete masonry units (CMU) is a material that will survive most weather.

Hiro Toiya- Building code is going through adoption. This is lead by Planning and Permitting a requirement for window covering on new construction homes.

Tsunami design standards, etc.

MG Hara-Information sources available are through public service announcements, DCCA, all Resilience Fairs, etc.

James Barros- To promote all these protective measures as an agency, we are hiring social media and working on a communications strategy.

d.) Kauai

Glenda Nogami-Streufert

- DLNR Dam Safety for many of the dams on Kauai are on private lands and are aging.
- Kudos to KEMA for practicing and utilizing multi-agency collaboration in all efforts. Kauai is a large land mass but a small, tight knit community; for any emergency efforts to be successful, there is always a multi-agency focus.
- Fire hazard prevention/awareness are on-going with the community. This is especially critical for our West Side, drier communities as they have only one throughway.
- Any efforts that involve land usage for emergency management should include a Ka Pa'akai analysis. Pa'akai studies include a thorough examination of historical, religious and cultural practices, and significance of the land. It also includes a plan for iwi identification/protection measures.

VI. County EM Partner Reports

Hawaii- Talmage Magno:

With regards to Tsunami preparedness the Keaukaha Community and DHHL lessees, in the past they have gone across the airport runway, and this is still part of our plan. Last week DOT Airport division advised they will need to go through TSA. Another back route has been put in place at the airport where we have facilities, this is another gated access point that would need to be opened for evacuation. The main road heading out would be used for commercial traffic do to harbor activities. Will exercise the plan on 25 March.

May is Wildfire Awareness Month. The fire department is working on community projects by fire management organization and the Big Island Fire Coordination Group may be present due to debris clearing in communities throughout the month.

Disaster Preparedness Fair in Hilo will be held June 1st with all our partners to bring awareness of Hurricane Season.

Fire Breaks- DOT Highways is working with the fire department and Civil Defense to provide multiple fire breaks around the community. We have had a few fires due to fireworks.

NWS has forecasted a drought, although we have had some rain, but terrain remains dry. Fire breaks around the DHHL property to keep fires confined. HVO night ops, are working with the National Guard on the mainland going through DOI certification and the pilot so they can carry the OI personnel.

New personnel- GIS Specialist Ms. Wasser and a Public Information Officer.

Maui - Amos Lonokailua-Hewett:

Administrator of Maui Emergency Management Agency. Background is fire, retired from the fire department as a battalion chief in 2019. I was called for the West Point Community managing that whole distribution change case. Interacting with Cal Fire and I am trying to validate what is true, what is working and what is not working, to determine how to rebuild the relationships to actually fix the system. A lot of progress has been made with police, fire and engagement with other parties.

When I was managing the West Maui for 32 days, with 12 points of distribution, in that experience the community was incredible. They outpaced government, as I worked through that I thought about it, and I do not think we could. There were 2,500 volunteers that assisted; I had \$750,000 in an account that I could draw from; I was controlling planes coming in to Kapalua airport, low boys, box trucks and all the businesses that were coming in and connecting with us.

Then later I was asked by the mayor to manage all 12 PODS and I created a system on how to manage.

If our community was able to manage, it would be better. There is an opportunity to create a community art program that allows us collectively to create as a whole community approach.

Community concerns are evacuation routes for the public. The evacuation routes are being worked on and we appreciate HI-EMA's support. Have been working with all the community in outreach and the communities can assist with a lot.

Debris removal in Lahaina are 20% removed; EPA wastewater is at 90% completion; MEMA manages the check points to the burn zones – there have been some problems with homeless, visitors, etc. Navigating the habitability, now lays with the County.

Staffing – As of January 1, we currently have three staff out of the nine existing positions. Have hired three 89-day hires with tremendous experience and are moving the agency forward, will need to hire two remaining positions. Will be proposing six more positions for the 2025 budget. Maui isolated communities are Lanai, Molokai, and Hana.

Will hire a Public Affairs Officer full time, Training Specialist, and IMT for all hazards. I am looking to engage with the community frequently. Also have four FEMA Team Members assisting with financials currently.

Mona Curry – Thank you for acknowledging the gaps and bringing up the standards. If you have questions on Emergency Management regarding national standards, please contact me.

Kauai – Elton Ushio:

- Fire Administration to help with access to RAWS network for weather sensors. The utility provider on Kauai would like to obtain state-wide.
Talmadge Magno- MesoWest incorporates the National Weather Service (NWS) and all affiliated for all 50 states. This site is used to check certain weather gauges to determine roads they may flood.
- KEMA's budget cycle- Five Emergency Management Reserve Core positions that need to participate 40 hours per year to stay active. We will have executed contracts on standby status.
- Also augmenting our junior staff that need to train up through our experienced staff.
- Create GIS product. Will collaborate technical assistance, bring back the Army Corps of Engineers to do prime assessments.

Oahu – Hiro Toiyya:

- Focus this year is updating our Mitigation Plan. This is a whole community discussion to express concerns on how we approach the Hazard Mitigation Grants. Once we do accept, we become the grant managers, DEM does not have process or the structure unless FEMA is able to support on the working capital budgeting.

James Barros- For the Nonprofit Hazard Mitigation, the Forum would be the one to support. HI-EMA will help and continue to advise.

Elton Ushio- Advising on the support of the BRIC program.

Staffing- DEM has a few vacancies.

Tsunami Awareness Month- Laura Kong is offering to provide refresher courses for Emergency Managers either state-wide or on Oahu only. DEM has limited spacing, is HI-EMA willing to sponsor?

VII. HI-EMA Update *(Slides presented, see attached)*

James Barros, HI-EMA Administrator

- Private Partnership Program
- Next month will have the N5 Sensors
- Took Saint Louis 8th Graders as First Ambassadors to Hawaii County to teach and share
- Key Project in Kahalu'u
- \$10 million NOAA Grant, even if the grant does not mature, would still create a HI-EMA West by way of the Community Colleges.
- HHARP- John Vierra, Community Outreach Lead is currently in discussion with all groups.
- Mitigation- HI-EMA is trying to build bandwidth and leverage funds.
- National Level Exercise (NLE) 2024- April 4th Gov TTX; June 3-7 Recovery Seminars; Date TBD August/September Port Restoration/Port ROC Drill.
- Director and Chair to determine if we want the Branch Chiefs to brief their updates at HACEM Meetings.

VIII. Legislation Update *(Slides presented, see attached)*

James Barros, HI-EMA Administrator

PENDING BILLS FROM THE CURRENT 2024 HAWAII STATE LEGISLATIVE SESSION:

HB 1800 HD1 –Adjusts fiscal Biennium Budget 2023-2025 for HIEMA's operations and mitigation grants

•**HB 2107HD2**-Appropriates funds to establish Limited English Language Coordinator within HIEMA

•**HB 2270 HD1**-Establishes a Task Force to develop and explore alternate routes in/out of Waianae Coast, including Kolekole pass and allowing Emergency Vehicles access to the road.

•**HB 2406 HD2** -Establishes the Climate Health and Environmental Action Special Fund within DLNR to minimize the impacts of, and respond to, climate crisis through an additional \$25 fee to the current TAT

•**HB2610 HD1** –Establishes a disaster relief match special fund to support the local match requirements of the FEMA Maui Mitigation

•**SENATE BILLS:**• **SB2277 SD2** –Authorizes the Governor to suspend the mortgage foreclosure provisions of Chapter 667(HRS) for properties having substantial damage resulting from a Gov. Declared Emergency.

•**SB 2693 SD2** –Establishes the offense for charitable fraud during a State of Emergency

•**SB 2904 SD2** -Amends the emergency management law to protect tenants, mortgagors, consumers, and residents for certain periods of time after the GOV/Mayor Emergency Proclamation.

•**SB 2908SD1** –Prohibits residential rent increases in affected areas for an unspecified period after a severe storm warning, or issuance of an Emergency Proclamation

OPPOSITION BILLS

•**HB 2237 HD1** –Repeals the Hazard Mitigation special fund.

•**HB 2515 HD1** –Clarifies the type of events that constitutes disasters and emergencies

IX. HACEM Status / Update

Darryl Oliveira, Chair of HACEM

- Looking at meeting with the HACEM Members more frequently and will be seeking guidance from the attorney general's office on the process and rules to abide by.
- Craig Iha- The Sunshine Law requires specific guidelines need to be met, the agenda needs to be posted six days ahead and need to have an area for the public to meet.
- James Barros- 127A-4 Hawaii Advisory Council on Emergency Management *(see attached slide)*

- Mona Curry- Request advisement on the requirements for the Investigative Committee.

X. Closing Remarks

Attendees / Council Members

- Next legislative session will ask all to support.

XI. Announcements/Adjournment

Darryl Oliveira, Chair of HACEM

- Next HACEM Meeting, May 9, 2024 [10:30 am-1:30 pm]
- Darryl Oliveira - Motion to adjourn, Meeting adjourned at 3:30 p.m.

Darryl Oliveira

DARRYL OLIVEIRA
Chair

J. D. Barros

JAMES DS. BARROS
Administrator
Hawaii Emergency Management



HAWAII ADVISORY COUNCIL ON EMERGENCY MANAGEMENT (HACEM) QUARTERLY

MEETING – March 14, 2024 (10:00 AM – 2:00 PM) – “In Person”

AGENDA

I. Welcome / Call to Order Introduction	Darryl Oliveira, Chair HI-EMA Team and Invited Guests
II. Opening Remarks	Darryl Oliveira, Chair MG Kenneth Hara, HI-EMA Director James Barros, HI-EMA Administrator
III. Minutes [26 October 2023]	HACEM Members
IV. Governor Josh Green, M.D.	Remarks (20 minutes)
VI. Council Member Reports / Updates a.) Hawaii b.) Maui c.) Oahu d.) Kauai	a) Darryl Oliveira, William Bergin b) . c) Gerry Silva, Mona Curry d) Glenda Nogami-Streufert
VI. County EM Partner Reports	Hawaii - Maui - Oahu - Kauai
VII. HI-EMA Update a.) Special Issues	James Barros, HI-EMA Administrator
VIII. Legislation Update	James Barros, HI-EMA Administrator
IX. HACEM Status / Update	Darryl Oliveira, Chair
X. Closing Remarks	Attendees / Council Members
XI. Announcements/Adjournment	Darryl Oliveira, Chair
Next Meeting – May 9, 2024 *In Person	



OPENING REMARKS



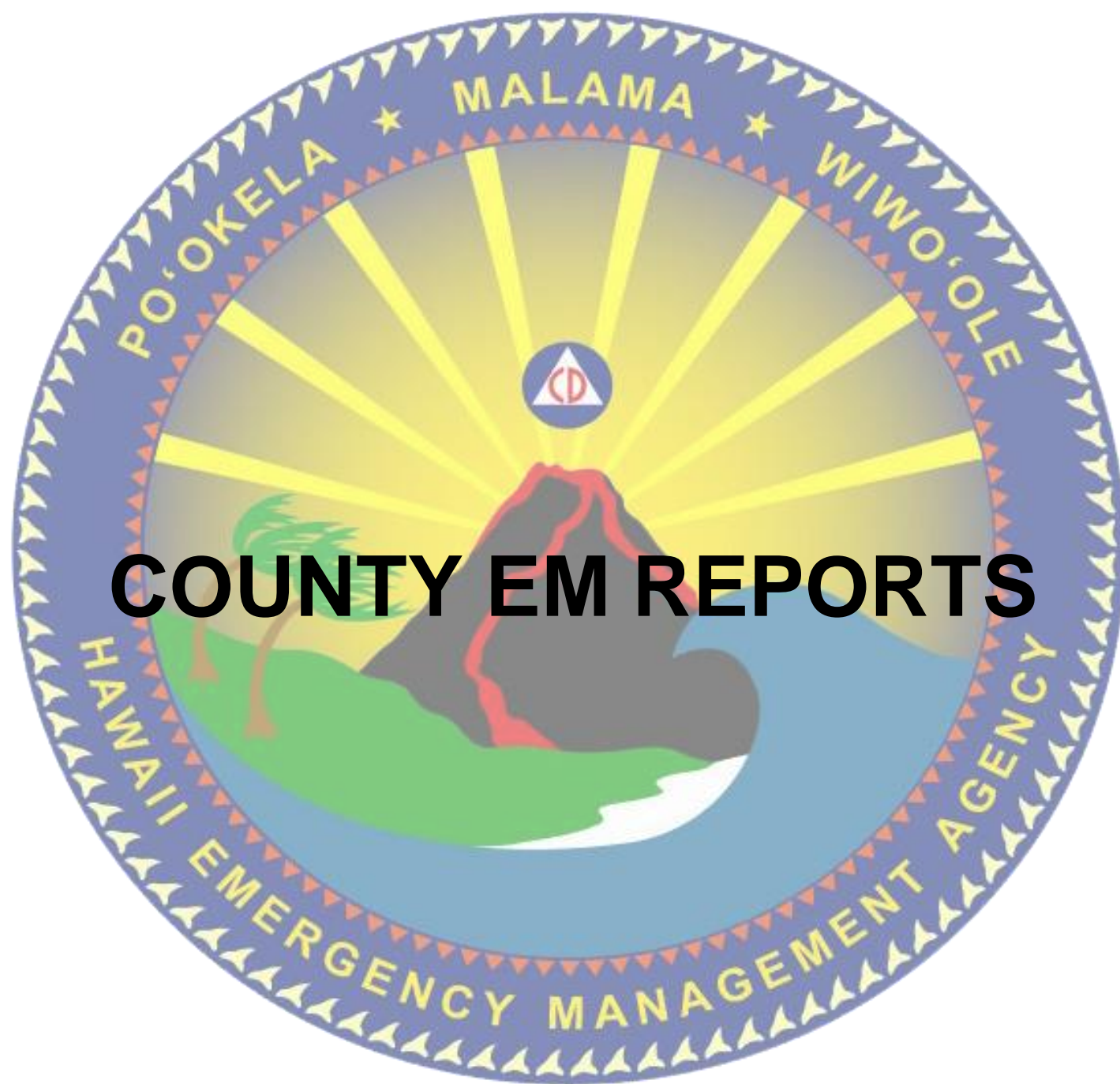
MINUTES



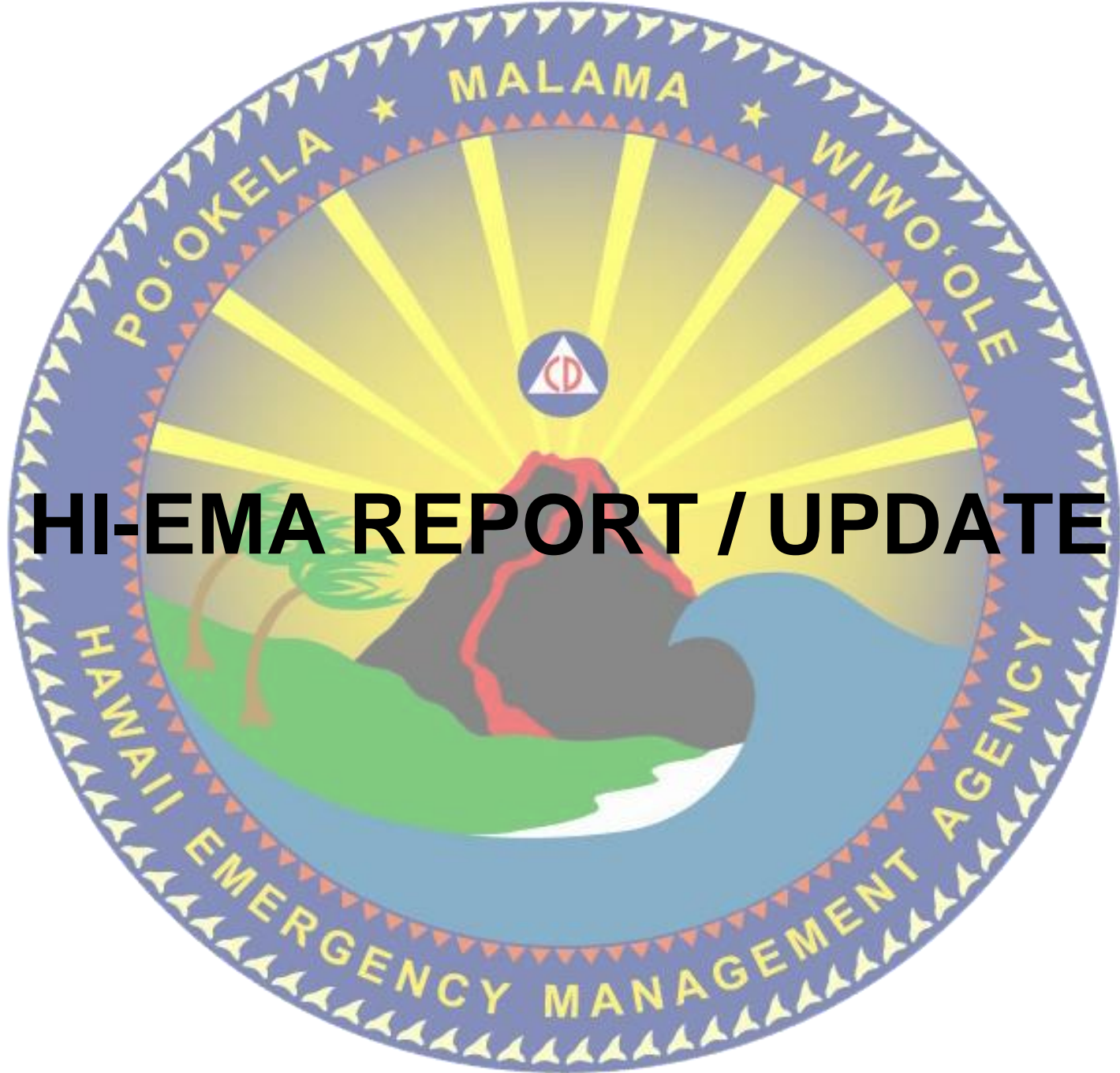
GOVERNOR

COUNCIL MEMBERS REPORTS





COUNTY EM REPORTS



HI-EMA REPORT / UPDATE



HI-EMA Hazard Mitigation Grant Program Project Cycle

LEGEND



HI-EMA



Subapplicants/
Subrecipients



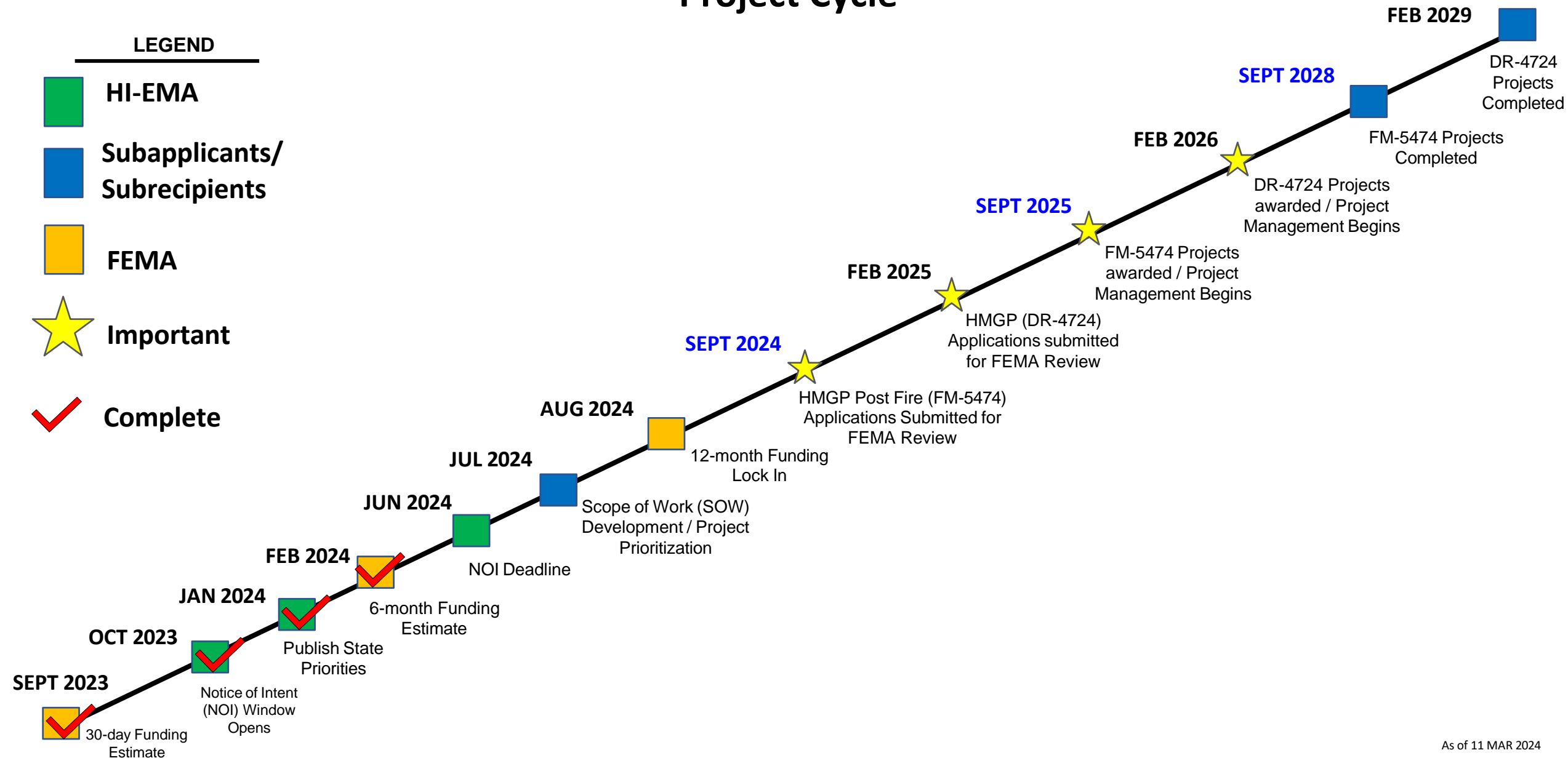
FEMA



Important



Complete





NLE 2024

04 APR 2024

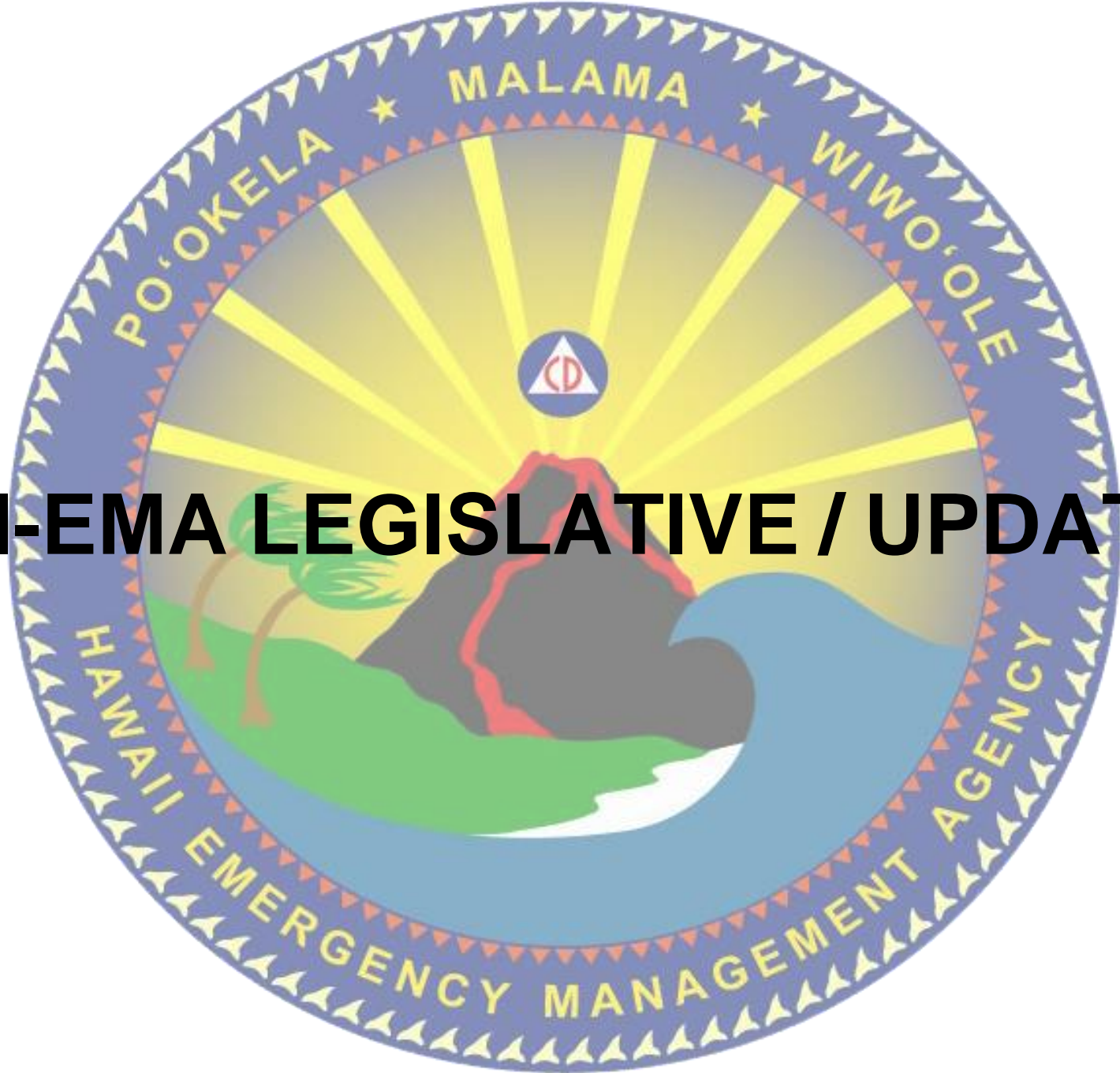
Thursday
GOV TTX

03 – 07 JUN 2024

Monday	Tuesday	Wednesday	Thursday	Friday
SENIOR LEVEL "LOOK BACK"	STRATEGIC HAZARD MITIGATION		LONG TERM RECOVERY	SENIOR LEVEL OUT BRIEF

TBD: AUG / SEP 2024

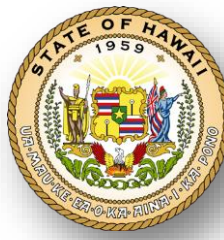
Tuesday	Wednesday	Thursday
PORT RESTORATION / PORT ROC DRILL		



HI-EMA LEGISLATIVE / UPDATE



HIEMA LEGISLATIVE UPDATE



PENDING BILLS FROM THE CURRENT 2024 HAWAII STATE LEGISLATIVE SESSION:

• HOUSE BILLS:

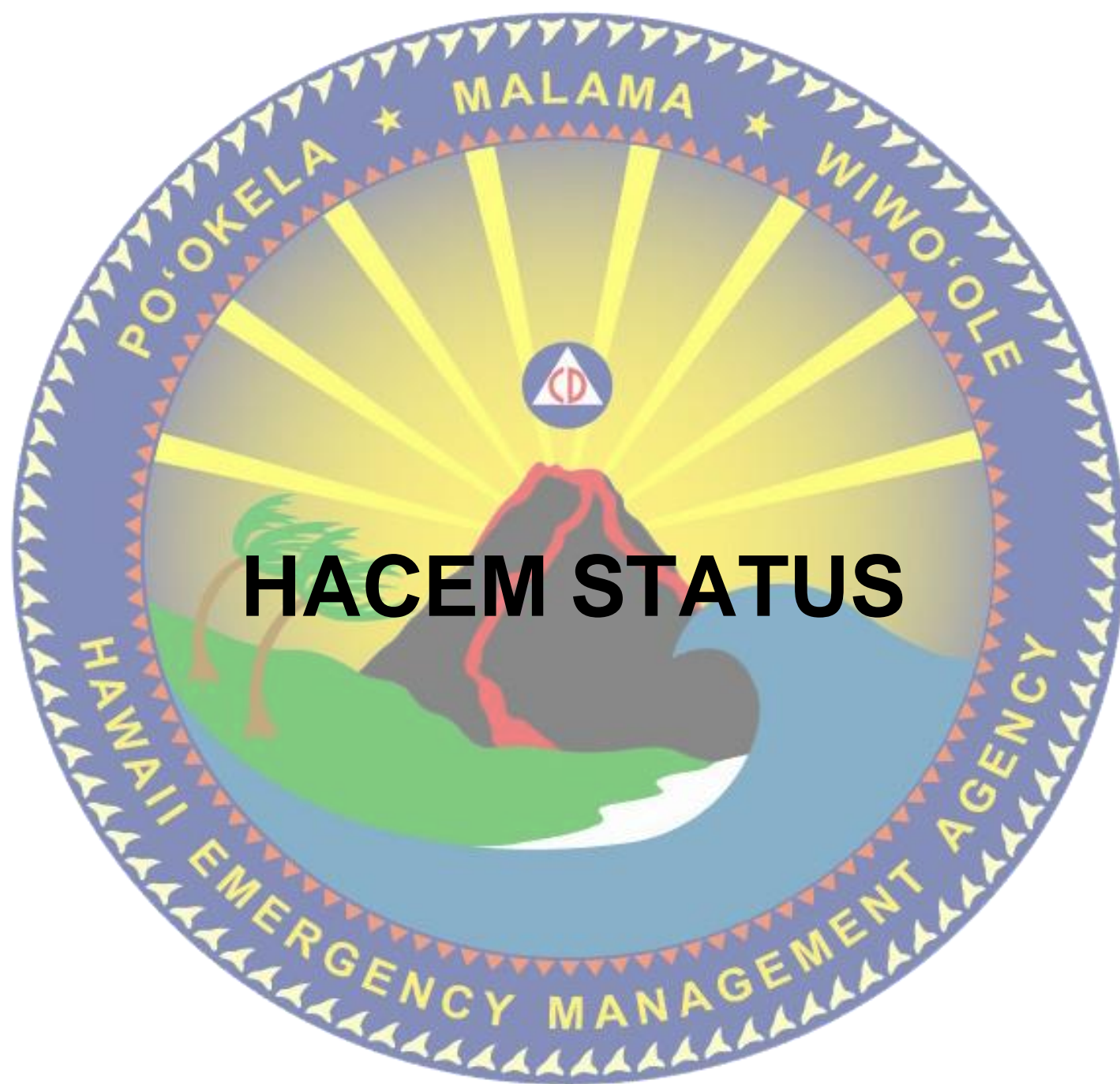
- **HB 1800 HD1** – Adjusts fiscal Biennium Budget 2023-2025 for HIEMA’s operations and mitigation grants
- **HB 2107HD2**- Appropriates funds to establish Limited English Language Coordinator within HIEMA
- **HB 2270 HD1**- Establishes a Task Force to develop and explore alternate routes in/out of Waianae Coast, including Kolekole pass and allowing Emergency Vehicles access to the road.
- **HB 2406 HD2** - Establishes the Climate Health and Environmental Action Special Fund within DLNR to minimize the impacts of, and respond to, climate crisis through an additional \$25 fee to the current TAT
- **HB2610 HD1** – Establishes a disaster relief match special fund to support the local match requirements of the FEMA Maui Mitigation

• SENATE BILLS:

- **SB2277 SD2** – Authorizes the Governor to suspend the mortgage foreclosure provisions of Chapter 667(HRS) for properties having substantial damage resulting from a Gov. Declared Emergency.
- **SB 2693 SD2** – Establishes the offense for charitable fraud during a State of Emergency
- **SB 2904 SD2** - Amends the emergency management law to protect tenants, mortgagors, consumers, and residents for certain periods of time after the GOV/Mayor Emergency Proclamation.
- **SB 2908 SD1** – Prohibits residential rent increases in affected areas for an unspecified period after a severe storm warning, or issuance of an Emergency Proclamation

• OPPOSITION BILLS

- **HB 2237 HD1** – Repeals the Hazard Mitigation special fund.
- **HB 2515 HD1** – Clarifies the type of events that constitutes disasters and emergencies

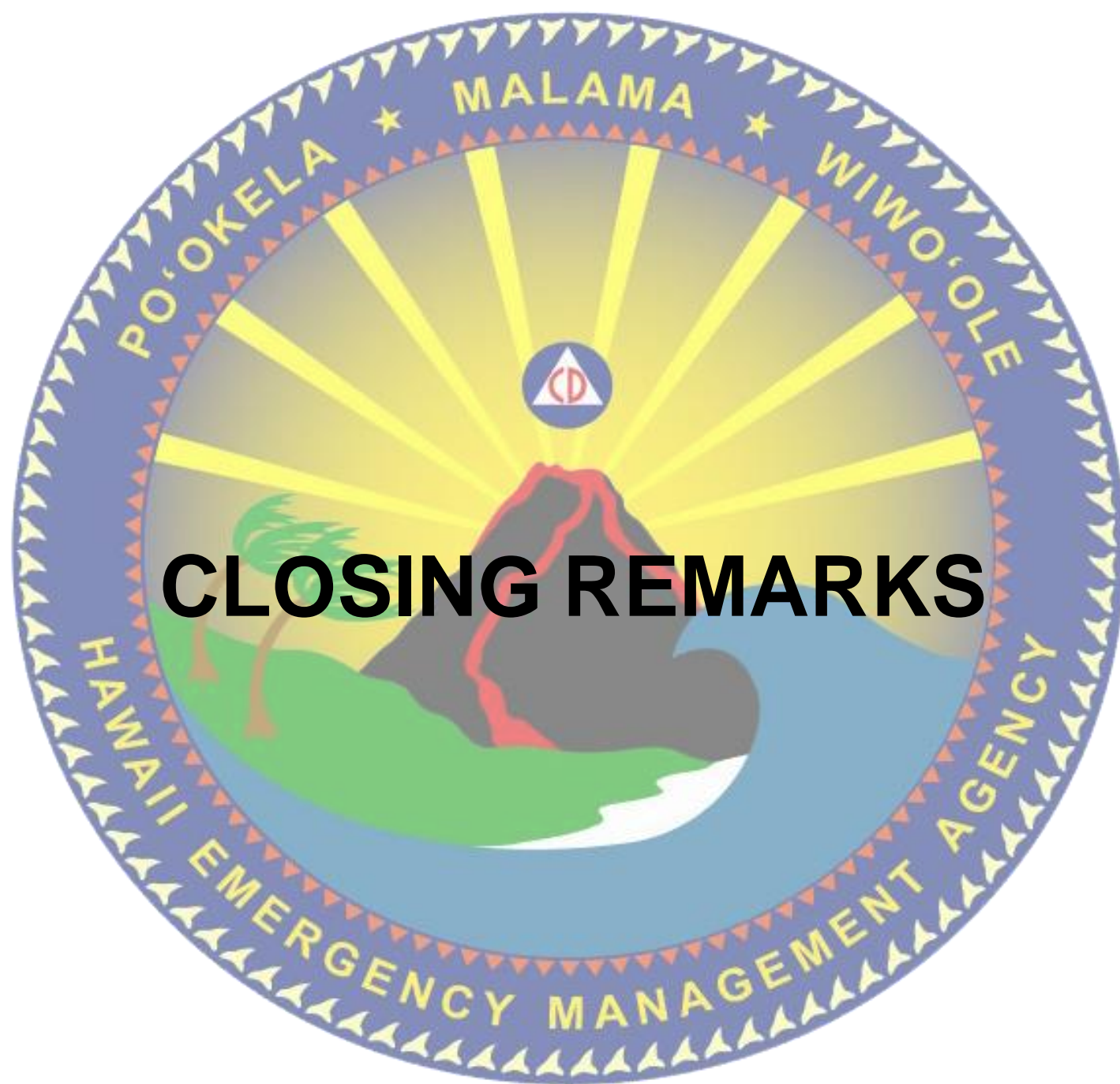


HACEM STATUS

[§127A-4] HAWAII ADVISORY COUNCIL ON EMERGENCY MANAGEMENT

IAW HRS 127A- “There shall be a Hawaii advisory council on emergency management, which shall be attached to the agency for administrative purposes, and which shall consist of seven members nominated and, by and with the advice and consent of the senate, appointed by the governor. The governor shall designate the chairperson of the council. The council, at the request of the governor, shall confer with and advise the governor in regard to matters pertaining to emergency management. Members of the council shall receive no compensation but shall be reimbursed for travel and other reasonable and necessary expenses incurred in carrying out their duties relating to the council. Persons holding public office or employment in the state government, or any political subdivision thereof, are eligible for appointment to the council. [L 2014, c 111, pt of §2]”

- **Purpose of the Hawaii Advisory Council on Emergency Management (HACEM):**
- **Advise the Governor of Hawaii on matters pertaining to Emergency Management and Emergency Operations**
- **Assist the Governor of Hawaii develop and implement a comprehensive and strategic plan pertaining to Emergency Operations (Response, Recovery, Mitigation).**
- **Council members will help their respective communities socialize mitigation proposals to help increase the State of Hawaii’s holistic approach to “building more resilient communities.”**
- **Coordinate with the Governor’s Office to develop a strategic messaging platform to inform communities on how to better develop more cohesive, community based response during a disaster.**
- **Assist and Support the Governor and the Director of Emergency Management with legislative initiatives pertaining to Response, Recovery, and Mitigation efforts. This can include drafting, editing, and lobbying for proposals to help the State of Hawaii’s ability to conduct Emergency Management and Emergency Operations.**



CLOSING REMARKS



NEXT MEETING

09 MAY 2024

(TIME AND LOCATION TBD)

*Like electricity | a century ago, connectivity | is a
foundation | for economic growth, job | creation,
global | competitiveness and a better way | of life.*



Cable Franchises in Hawaii and community benefits

The Privilege of a Franchise

The grant of a cable franchise gives the recipient a non-exclusive right to use and occupy certain limited and scarce Public Places, Public Highways and easements for the construction, use, operation and maintenance of a Cable System for a fixed period.

The franchise confers no right, title or interest in any public right-of-way beyond those expressly conferred herein. The privilege of a cable franchise also carries with it associated obligations. They include operating a system that is reliable, responsive, and responsible to the public it serves.

Cable Franchises in Hawaii—by County and Provider

(From the DCCA Cable Division website)

County	Provider	D&O
Maui	Spectrum	D&O 241
Kauai	Spectrum	D&O 191
Hawaii	Spectrum	D&O 368
Oahu	Spectrum	D&O 346
Oahu	Hawaiian Telecom	D&O 352

Overview of benefits-including INET connectivity-provided by Hawaii's Cable Television Franchise Agreements

Overview of Community Benefits

- Each county has a separate franchise
 - There is a statewide institutional network (INET)
 - There is support of public, education, and government (PEG) access stations in each franchise
 - Olelo on Oahu
 - Akaku in Maui County
 - Hoike on Kauai
 - Na Leo on the Big Island
- Each franchise also provides limited connectivity to the Emergency Alert System

Questions for Planners

Does HI-EMA have sufficient connectivity to support operations?

Have we ensured connectivity at the federal, state and county levels?

Do we have sufficient bandwidth that is survivable, not overwhelmed, and redundant?

- How do we inform the public of a pending disaster?

- How do we send/receive information related to disaster assessment and recovery?

What about connectivity between islands?

Community Benefits (D&O 346)

Institutional Network (INET)

- the State operates and utilizes an INET for telecommunications purposes by government and educational authorities, agencies, and institutions. INET contribution and support requirements are standard components of all cable franchises approved by DCCA. The maintenance and continued expansion of the State's INET is a significant component of the State's strategy for its telecommunications infrastructure.

Community Benefits (D&O 346)

New Interconnections

The DCCA Director can request of TWE (Spectrum, Oceanic/Time Warner) to provide two-way fiber optic INET interconnection or connections for two-way broadband video, voice, and data capabilities. TWE shall be compensated by the State for TWE's actual cost of labor and materials; provided that the sites at which TWE shall install fiber optic cables have the necessary infrastructure and rights of way. Note that there is a current backlog of requests.

Community Benefits (continued)

Emergency Alert System

Pursuant to Section 624(g) to the Communications Act, Cable Systems must be capable of providing EAS alerts to their subscribers. TWE shall therefore purchase and maintain EAS receivers and all associated equipment necessary to participate in national, State, and county level EAS activations and emergency alerts to Subscribers, at no cost to the State or Subscribers.

- TWE's existing EAS has a direct feed from the Civil Defense location at Diamond Head, including a video feed. The EAS allows audio override and a text crawl over existing video. For digital Channels, the set-top box generates a crawl line. In an emergency situation, the Civil Defense will pre-set a message and send the message to Oceanic, which shall then transmit the message to Subscribers in the crawl line. TWE shall maintain and update this emergency system in full compliance with the State EAS requirements and FCC rules.

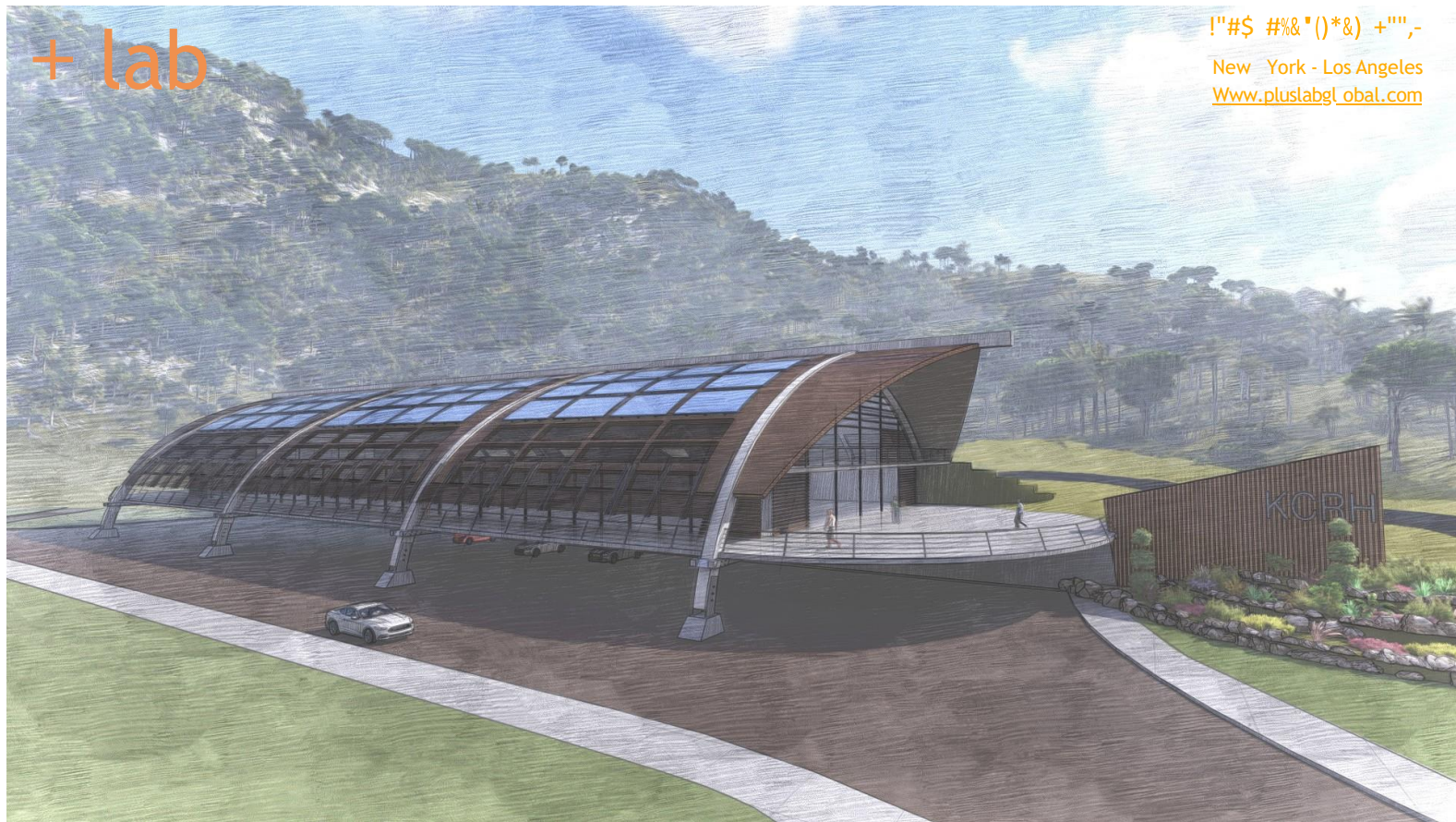
Community Benefits (continued)

Emergency Alert System. Pursuant to Section 624(g) to the federal Communications Act, Cable Systems must be capable of providing EAS alerts to their subscribers. TWE shall therefore purchase and maintain EAS receivers and all associated equipment necessary to participate in national, State, and county level EAS activations and emergency alerts to Subscribers, at no cost to the State or subscribers.

Existing EAS has a direct feed from the Civil Defense location at Diamond Head, including a video feed. For analog systems, the EAS allows audio override and a text crawl over existing video. For digital Channels, the set-top box generates a crawl line. In an emergency situation, the Civil Defense will pre-set a message and send the message to Oceanic, which shall then transmit the message to subscribers in the crawl line. TWE shall maintain and update this emergency system in full compliance with the State EAS requirements and FCC rules.

Current Unmet Needs

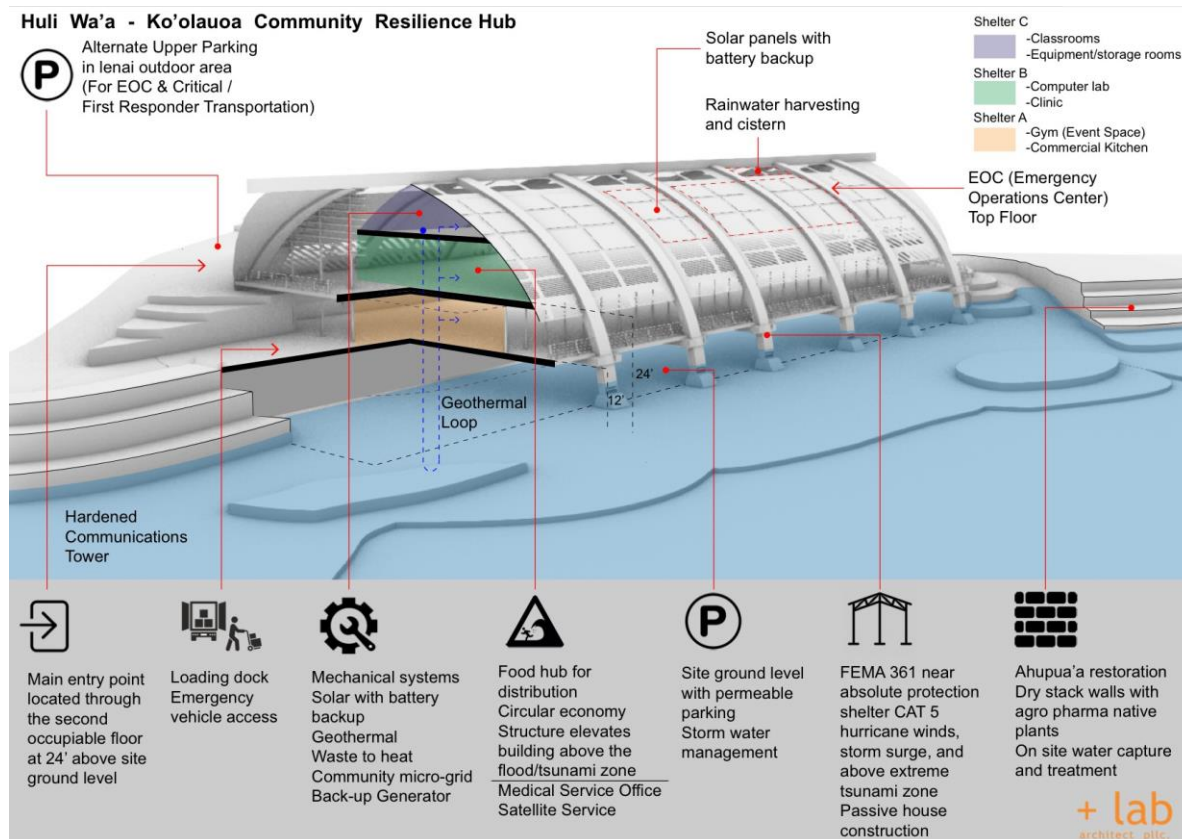
- Update and incorporate connections to Berkheimer tunnel and the Governor's office on the cable system)
- for the public to access inundation maps over the cable system when tsunamis loom



©+LAB Architect, Azaroff 2021

#KCRH Ko'olauloa Community Resilience Hub - Huli Wa'a

On the front lines of climate change, Hau'ula is identified as one of the most vulnerable communities on the North Shore of Oahu. Resilience is derived from understanding Uniqueness of place, culturally wisdom, indigenous practices, and ecologically regenerative. The #KCRH is the result of three + years of community engagement and a decade of leadership from Hui o Hau'ula. Aptly named Huli Wa'a, the building and resilience park that marries cultural wisdom with modern building intelligence to create a culturally significant, absolute near protection design, that serves as a community anchor and regenerates ecology, cultural practice, and promotes circular economy.



- Tsunami ready
- Hurricane and typhoons
- 2000 person capacity
- Stand alone operations for 30 days
- ☐ Food security
- Community micro-grid

